



Adam Tas Corridor Energy

Cable Tray Support Selection Table





Cable Tray Support Selection Table

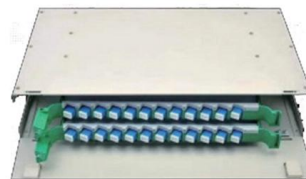


Best Practice Guide to Cable Ladder and Cable Tray Systems

This guide covers cable ladder systems, cable tray systems, channel support systems and associated supports intended for the support and accommodation of cables and possibly other electrical

How to Select the Right Electric Cable Tray for Your Application

How do I decide the right size for my electrical cable tray? To determine the load capacity for your electrical cable tray, calculate the total weight of all cables, including any potential future additions,



Ordering information

NO.	1	2	3	4	5	6
Model	SP1201	SP1202	SP1801	SP1802	SP1202	SP1201
Product name	Patch Panel	Patch Panel	Patch Panel	Patch Panel	Patch Panel	Patch Panel
Illustration						
HD	1	2	4	1	2	4
Maximum number of cores	144	288	576	144	288	576
Product size (including mounting and accessories)	402.07.371.1744 mm	402.07.371.1761 mm	402.07.371.1777 mm	402.07.371.1744 mm	402.07.371.1761 mm	402.07.371.1777 mm
Standard color code	SA1000	SA1000	SA1000	SA1000	SA1000	SA1000

SELECTION OF CABLE TRAYS

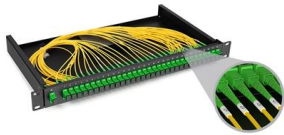
The cable volume is an important criterion for the selection of the correct cable support system; for which there must be sufficient space in the cable tray. As the

SWIFTS CABLE TRAY

In addition to the cantilever arms listed, there are many other specialist support brackets for use with cable tray T these are detailed in the



relevant sections in this catalogue



CABLE TRAY SYSTEMS GUIDE

In order to determine the most appropriate and economical system, a class should be selected that reflects the actual total working load and support span for each application. Some applications may

Cable Tray Technical Guide A practical guide to product selection and

Cable tray length is selected based on the load to be supported, the distance between the supports (also referred to as the span), and handling and installation constraints.



Cable Tray Raceway Fill and Load Calculations

Resources For Electrical & Electronic Engineers
Cable Tray Raceway Fill and Load Calculations
Cable tray / raceway is integral part of any cable management



CABLE TRAY INSTITUTE

The Cable Tray Institute (CTI) was founded in 1991 to support the cable tray industry by engaging in research, development, education, and the dissemination of



Ultimate Guide to Cable Tray Selection - Types,

Learn how to choose the best cable tray system for your needs. Explore types, materials, installation tips, and NEC compliance in this expert guide.

Cable Tray Types and Sizes

What is Cable Tray Systems? An electrical cable tray is a type of containment system used to support insulated electrical cables for power distribution, control,



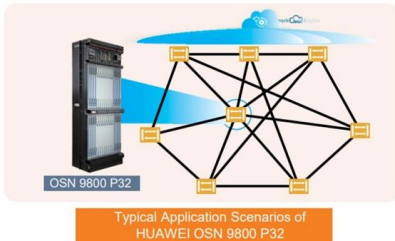
Cable Tray Size Chart and Selection Guide

Manufacturers publish load rating tables that specify the maximum uniformly distributed load a tray can support at various support span distances, typically expressed in kilograms per meter



Selecting Cable Trays: A Complete Guide for Cable

Selecting cable trays can feel overwhelming, especially with so many options available. But don't worry--I've got you covered.



B-Line series Cable Tray Design Considerations

As an industry leader in cable tray, Eaton offers one of the widest ranges of cable management solutions available in the market today with its B-Line series portfolio. With unmatched quality and service, we

Cable Tray Technical Guide A practical guide to product selection and

A practical guide to product selection and installation This guide for engineers and installers has been developed by ABB as a practical reference regarding cable tray characteristics, installation, and





B-Line series Cable Tray Design Considerations

Our wind certification report provides you with list of acceptable B-Line series cable tray supports, fittings and covers based off of the environmental conditions, cable loading, and type of cable tray in your

A Guide to Installing and Supporting Electrical Cable Trays

A professional guide to installing electrical cable tray systems per NEC Article 392. Covers support, securing cables, and fill calculations.



Cable Tray Load Calculation and Sizing: Your Easy Guide

Worried about cable tray capacity? Learn simple cable tray load calculation steps. This guide helps you pick the right tray every time, keeping

Cable Tray Support: Rod vs. Angle Steel

Learn about the different types of cable tray support, including rod supports and angle steel supports, and how to choose the right one for your



Best Practice Guide to Cable Ladder and Cable Tray Systems

Introduction This publication is intended as a practical guide for the proper and safe* installation of cable ladder systems, cable tray systems, channel support systems and associated supports.



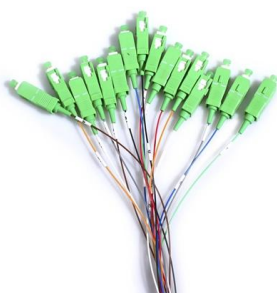
B-Line series Cable Tray Design Considerations

As an industry leader in cable tray, Eaton offers one of the widest ranges of cable management solutions available in the market today with its B-Line series portfolio. With unmatched quality and service, we



Cable Trays Selection Guide: Types, Features,

Cable trays are components of support systems for power and communications cables and wires. A cable tray system supports and protects both power and





Cable Tray Size Choosing: Key Factors for Electrical

Cable tray size choosing is a critical element in electrical system design. Proper cable tray selection ensures the system's efficiency, safety, and



Cable Tray Dimensions Guide: Standard Sizes, Tray

Explore standard sizes by tray type, understand width and depth limits, and see how to calculate and choose compliant cable tray sizes for real projects.

Chapter 14 Cable Support systems

IEC61537-2004 If full details of the cabling layout are available then the likely cable load can be calculated using either manufacturer's published information or the tables of Cable Weights and



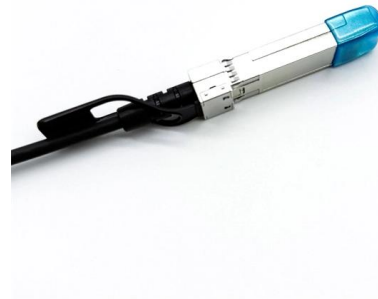
Cable Tray Selection Process

The standard classes of cable trays, as related to their maximum design loads and to the associated design support spacing based on a simple beam span requirement, shall be designated in



GUIDE CABLE TRAYS TECHNICAL

NEMA VE 1-2017 Specifies requirements for metal cable trays and associated fittings designed for use in accordance with the rules of Canadian Electrical Code, Part I and the National Electrical Code®



Contact Us

For datasheets, pricing, or custom telecom energy solutions, please visit:
<https://koskolong.co.za>