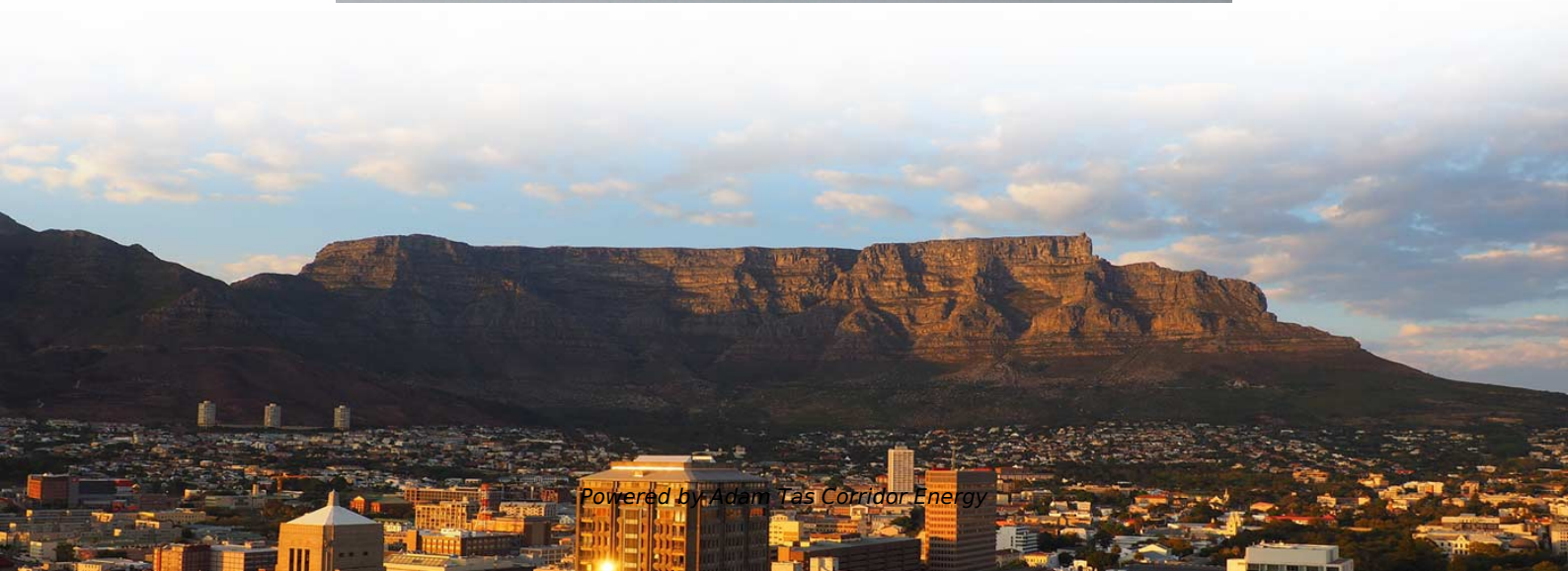




**Adam Tas Corridor Energy**

# **Cable junction box DLH-22-3 type**





## Cable junction box DLH-22-3 type

---



### DK Cable junction boxes The new Hensel Box

DK Cable junction boxes for normal environment and protected outdoor Cable entry via integrated elastic membranes or metric knockouts

### Cable junction box

with one cable entry in the bottom, sealing range Ø 6.0-13.0 mm lid fasteners sealable without accessories retaining strap and external brackets for wall fixing included colour: black, RAL 9011 To



### CABLE JUNCTION BOXES The Hensel Box

WP Cable junction boxes „waterproof“, for encapsulating for outdoor installation and use in harsh environmental conditions with risk of condensation and ingress of water as well as for installation in

### Terminal technology in DK Cable junction boxes

Terminal technology in DK Cable junction boxes  
Safe and reliable up to 70 mm<sup>2</sup> Screw-type



terminals 1.5 - 35 mm<sup>2</sup> in Cable junction boxes  
Terminal set 1.5-6 mm<sup>2</sup>, Cu



### **Deadbreak Junctions , Hubbell Power Systems**

Deadbreak junctions are vital for medium-voltage electrical networks, ensuring safe and continuous power flow. These connectors allow for live maintenance and network adjustments, enhancing

### **Junction Boxes , McMaster-Carr**

Choose from our selection of junction boxes, including over 2,800 products in a wide range of styles and sizes. Same and Next Day Delivery.



### **Cable junction box**

IP 54 width 139 mm height 119 mm depth 49 mm weight 0,256 kg tightening torque for terminal 1.2 Nm in accordance with IEC 60670-22 Dimension drawing Detail mass Box walls Removable grommet



## Catalogues and brochures

International Catalogue, ENYCASE - DK Cable junction boxes, ENYBOARD - KV Small-type Distribution Boards up to 63 A, ENYFLEX - Empty enclosures in accordance with IEC 62208, ENYSTAR,



## Terminal and Junction Boxes Ex e / Ex i, Glass-Fiber Reinforced

Terminal and Junction Boxes Ex e / Ex i, Glass-Fiber Reinforced Polyester (GRP) GR.T\* < Glass-fiber reinforced polyester (GRP) enclosure < Installation in Zone 1, Zone 2, Zone 21 and Zone 22 <

## Terminal boxes , Junction boxes , Ex , Ex e , Ex d , ATEX , Explosion

We offer bespoke, custom-made terminal boxes and terminal box combinations, as well as standard products with short delivery times. Our products are certified for installation technologies all over the



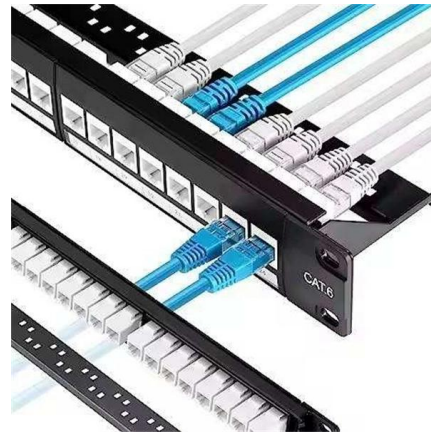
## hubbellcdn

Hier sollte eine Beschreibung angezeigt werden, diese Seite lässt dies jedoch nicht zu.



## DK Cable junction boxes The new Hensel Box

Since its founding, Gustav Hensel GmbH und Co. KG has continuously met the challenges of the times! The invention of the first cable junction box made of thermoset plastics in 1931 revolutionised an



## EN\_DK\_Int\_Cat\_2017

DK Cable junction boxes 1.5 mm<sup>2</sup> up to 240 mm<sup>2</sup> degree of protection IP 54-69 in accordance with IEC 60670-22



## 12 Types of Electrical Boxes and How to Choose

Learn about the many common types of wall and ceiling electrical boxes for switches, outlets, light fixtures, ceiling fans, and junction boxes.





## Terminal and Junction Boxes (Ex d) , Explosion Protection

EJB terminal boxes and junction boxes offer an extended operating temperature range down to -60 °C and can be configured as per customer specification--including different types and quantities of

## Ex Junction Boxes and Atex Enclosures · Atex Delvalle

Our Atex Delvalle's Ex junction boxes and large enclosures are flameproof and prepared for use them in explosive atmospheres zones 1,2,21 and 22. ATEX



## Cable Junction Boxes: 8 Types, Tech Specs & Installation

Explore 8 types of cable junction boxes, their tech specs, installation tips, and maintenance. Get expert insights on selection, common faults, and international compliance

### Cable junction box

with one cable entry in the bottom, sealing range Ø 6.0-13.0 mm lid fasteners sealable without accessories retaining strap and external brackets for wall fixing included colour: grey, RAL 7035  
To



## ENYCASE - THE CABLE JUNCTION BOX FOR PRO'S

The right box for every application In dry, damp, wet or even fire-prone areas - Cable junction boxes from HENSEL distribute electricity for all areas of application always safe and reliable.



## Cable junction boxes

Approved for intrinsic fire resistance, material: Sheet steel With plug-in terminals for copper conductors For cable trunking and conduit installation for equipotential bonding cables Cable entry via elastic



## Clipsal electrical junction boxes connect and protect

Larger junction boxes, also known as " adaptable boxes ", are ideal for wiring, mounting, and protecting electrical components. Junction boxes are available in



## EN\_DK\_Int\_Cat\_2017

5-pole per pole 4 x 6 mm<sup>2</sup> sol/f, 4 x 10 mm<sup>2</sup> sol/f, 4 x 16 mm<sup>2</sup> sol/s/f, conductors are inserted into the screw-type terminal, terminal technology, see annex DK Cable junction boxes included cable entry: 3



## Cable junction box

Cable junction box DE 9326 1.5-2.5 mm<sup>2</sup>, Cu 3~ with terminals 5-pole per pole 6 x 1.5 mm<sup>2</sup> sol, 4 x 2.5 mm<sup>2</sup> sol, 3 x 4 mm<sup>2</sup> sol 11 elastic membranes, closed cable entries, sealing range Ø 6-16 mm with

## Cable junction box

Cable junction box by HENSEL offers reliable and weatherproof solutions for outdoor installations, ensuring safety and durability with thermoplastic material.



## Catalogues and brochures

Download our current catalogues, brochures. International Catalogue, ENYCASE - DK Cable junction boxes, ENYBOARD - KV Small-type Distribution Boards up to 63 A, ENYFLEX - Empty enclosures in



## GUB junction boxes for IEC applications

GUB junction boxes for IEC applications Ex d IIC T4-T6, Ex ia for Zones 1, 2, 21, 22



## BUSBAR BOX, ABTECH, 3.3KV, 6.6KV, 11KV

Abtech Busbar Box Hazardous Area (ATEX) Electrical Enclosure Abtech Busbar Box HV Electrical Enclosures & Junction Boxes ATEX, IECEx & InMetro Certified &

## DK Cable Junction Boxes Technical Details Standards

Connecting devices for low voltage circuits for household and similar purposes Part 2-1: Particular requirements for connecting devices as separate entities with screw-type terminals Part 2-2:





### **Cable junction box**

Cable junction box DM 9045 1.5-4 mm<sup>2</sup>, Cu 3~ with terminals 5-pole per pole 6 x 1.5 mm<sup>2</sup> sol, 4 x 2.5 mm<sup>2</sup> sol, 3 x 4 mm<sup>2</sup> sol, 2 x 6 mm<sup>2</sup> sol cable entry via knockouts, cable entry to be ordered

## **Contact Us**

---

For datasheets, pricing, or custom telecom energy solutions, please visit:  
<https://koskolong.co.za>