



Adam Tas Corridor Energy

Cable primary and secondary distribution boxes





Overview

The equipment within these boxes varies: primary distribution cabinets usually contain isolating switches, circuit breakers, and residual current devices (RCDs); secondary cabinets contain large three-phase circuit breakers; tertiary cabinets contain single-phase circuit. Primary distribution systems consist of feeders that deliver power from distribution substations to distribution transformers. These boxes feature bottom entry and exit cables, front-opening doors, and main busbars connected with copper strips for optimal contact. Let's make a hypothesis: a newly built residential area introduces a 10kV incoming line and builds a distribution room. Understanding the fundamental distinction between Primary and Secondary distribution in electrical systems is pivotal for designing efficient and reliable electrical distribution systems tailored to specific needs across various domains.



Cable primary and secondary distribution boxes



Primary and Secondary Distribution Systems

This document provides an overview of primary and secondary distribution networks. It discusses how distribution systems begin at distribution substations and include

Primary vs. Secondary Distribution: What Are The Key Differences

Understand the critical distinctions between primary (11kV-33kV) and secondary (400V-1kV) distribution systems, including equipment, protection schemes, and application scenarios.



Underground Service Section of the DTE Energy Green Book

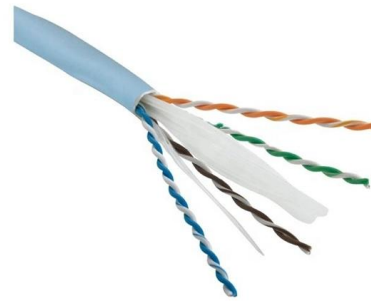
This drawing shows services installed from underground residential distribution but also applies to underground services from overhead distribution. When a proposed detached garage is to be on the

AC Distribution System , Primary distribution

The secondary distribution employs 400/230 V, 3-phase, 4-wire system. Fig. 12.3 shows a typical



secondary distribution system. The primary distribution circuit



The difference between the first, second, and third levels of

Generally, first level distribution does not allow direct use of electrical equipment, and second level distribution will be by power equipment because it is three-phase electricity, while third

A Definitive Guide To Distribution Boxes

Power distribution boxes are beneficial because they eliminate the requirement for each output device to be connected directly to the power source. As a result, there's no reason to utilize



Distribution Box Guide: Types, Components & Solutions

Understand distribution boxes (DB boxes) in 5 minutes. Learn about types, components, functions, and uses. Find the perfect DB box for your needs.





Distribution Automation Handbook

A primary distribution substation is the connection point of a distribution system to a transmission or a sub-transmission network. Outgoing feeders from a primary distribution substation are typically

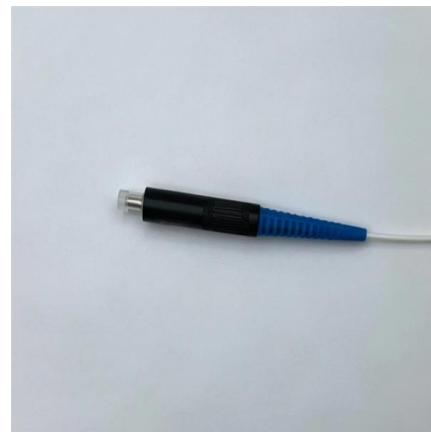


System Arrangements

Several commonly used system topologies are presented here, along with the pros and cons of each. The figures for each of these assume that the distribution and utilization voltage are the same, and

The Meaning and Function of Primary, Secondary, and Tertiary

This explanation aims to clarify the roles and functions of primary, secondary, and tertiary distribution boxes, enhancing the understanding of these critical components in electrical distribution



The Complete Guide to Distribution Box: Installation, Types & More

The primary purpose of a distribution box is to provide a safe and organized way to control electrical circuits. When an electrical fault occurs, such as an overload or short circuit, the protective



The Primary and Secondary distribution in electrical

Understanding the fundamental distinction between Primary and Secondary distribution in electrical systems is pivotal for designing efficient and



Three-Tier Power Distribution System in a Newly Constructed

Learn about the three-tier power distribution system (main secondary tertiary distribution boards) in a new residential area including their roles connections and safety measures for 0.4kV power supply.

Difference Between Primary & Secondary Electrical

The journey of electrical power from its generation to the final user involves a complex system of transmission and distribution. Understanding the





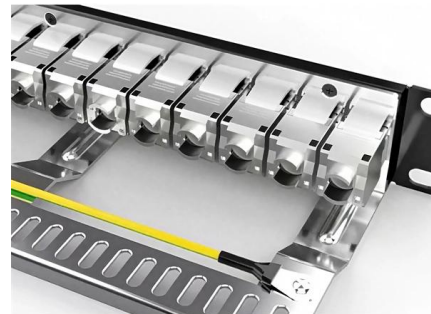
Power Distribution Box Essentials: Functions, Types

Every distribution box is specially equipped to handle unique tasks, power clean-up and in an efficient manner in a wide range of settings. 5)



Arrangements of LV Utility Distribution Networks (1)

In densely-loaded areas, a standard size of distributor is laid to form a network, with (generally) one cable along each pavement and 4-way link boxes

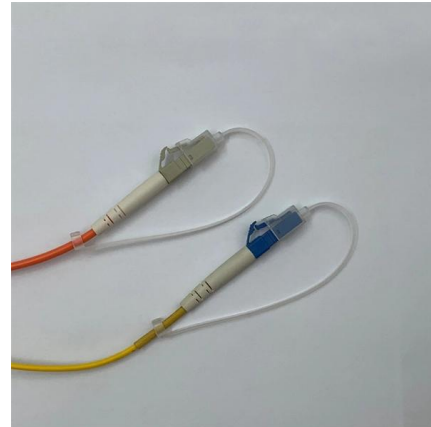


The Ultimate Guide to Distribution Box Types

Discover the key types of distribution boxes with NUOMAK's comprehensive guide. Learn about Main Distribution Boards (MDB), Consumer Units, Transfer

Difference between Primary Distribution and Secondary Distribution

What is a Secondary Distribution System? The secondary distribution system is connected to the primary distribution system and is responsible for distributing the electricity to the end users. It



Complete Guide For Distribution Boxes Types

Distribution boxes, also known as electrical distribution boards or panels, are pivotal components in electrical systems, ensuring the safe and organized distribution of



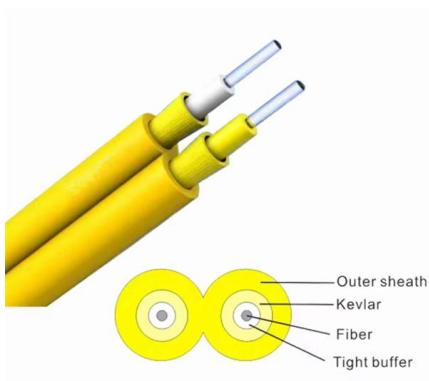
Difference Between Primary & Secondary Electrical

Understanding the distinction between primary and secondary electrical transmission is crucial for professionals working in the electrical



The Meaning and Function of Primary, Secondary, and Tertiary

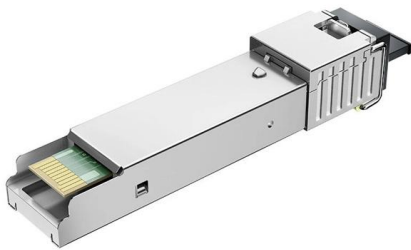
Summary of Three-Tier Power Distribution System: Primary: The main distribution panel, supplies power from the transformer. Secondary: Intermediate panel, routes power to buildings or zones. Tertiary:





Let's discover the types of MV Switchgear

Medium voltage switchgears are divided into two large families, MV switchgear for primary distribution (Metal Clad - Normal Clad) and MV switchgear



Secondary Distribution Boxes

Improve cable management, enhance flexibility, reduce installation costs and show dramatic cost savings throughout the life-cycle due to adds, moves and changes in new construction and



Power Distribution Boxes Explained Simply

Learn what a power distribution box is, how it works, key components, types, and why it's vital for safe and efficient electrical systems.

Contact Us

For datasheets, pricing, or custom telecom energy solutions, please visit:
<https://koskolong.co.za>