



Adam Tas Corridor Energy

Cable tray crossarm material cutting





Cable tray crossarm material cutting



How to cut Channels, Cable Ladders and Cable Trays

How to cut Channels, Cable Ladders and Cable Trays In the Oglænd System Cutting Guideline you can easily find out what the optimal cutting lengths/intervals

Cable Tray Cutting Tools , Cut Off Saws , Milwaukee Tools UK

Back to Mounting Conduit, Cable Trays and Cabinets Cable tray cutting The MILWAUKEE® range of cable cutting tools is designed for making precise cuts in delicate materials. Whether looking for a



Omega Crossarm for Wire Mesh Cable Tray

It is mainly used to fix and position the mesh during cutting, bending, and forming operations, ensuring that each section of the cable tray maintains stable dimensions and high consistency.

Cable Tray Trunking & Ladder Installation Method for

Before any permanent work will proceed, pre-inspection of all materials, tools and access for



installation to be carried out. Method of Installation of Cable Tray,



Complete cable tray manual for electrical engineers and

Complete cable tray manual for electrical engineers and designers (on photo: power cable management ladder tray systems assembled aluminum cable tray ladder

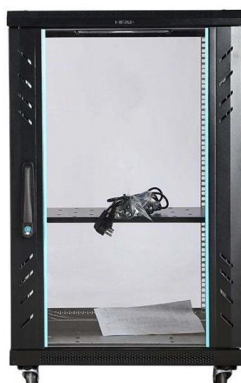
Cable Tray Design and Standards Guide

1. The document outlines codes and standards that must be followed for design and construction of cable trays and their components. Standards listed include those



Best Practice Guide to Cable Ladder and Cable Tray Systems

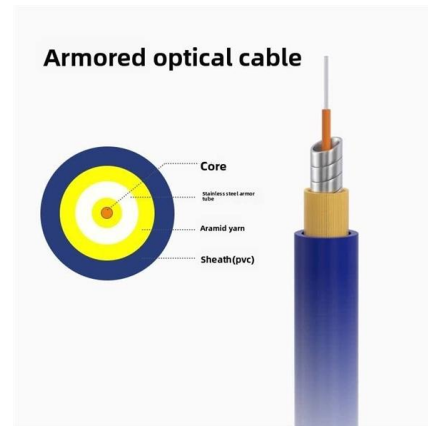
This guide covers cable ladder systems, cable tray systems, channel support systems and associated supports intended for the support and accommodation of cables and possibly other electrical





Cable Tray Cutting Tools , Cut Off Saws , Milwaukee

The MILWAUKEE® range of cable cutting tools is designed for making precise cuts in delicate materials. Whether looking for a cordless angle grinder or specific cut



Horizontal Cross Cable Tray

Versatile Design for Cable Management The Horizontal Cross junction provides effective four-way branching for cable tray support systems, accommodating complex wiring layouts in industrial and

Cable Tray Making Machine

Cable Tray Making Machine 12 Working Principle of Cable Tray Making Machines The working principle involves uncoiling the raw metal strip, guiding it through a series of progressing



Types of Cable Trays - Advantages, Applications and Sizes

Explore the types of cable trays, their advantages, applications, and standard sizes. Learn how they improve cable management and support various industries.



Profile Metal Shear

The solution for cutting cable trays, cable tray lids, cable ladders, trapezoidal profile rungs, cable protection channels, stiffening UA



Electrotechnic / Cable Trays

Profile Metal Shear 3520 up to 2.0 mm steel The universal cutting device for the electrical installer, apparatus and control cabinet construction. The solution for cutting cable trays, cable tray lids, cable



Structural Assessment Techniques for In-Service

Crossarms are widely used in power distribution and telecommunication sectors to support overhead cables. These structures are horizontally attached to



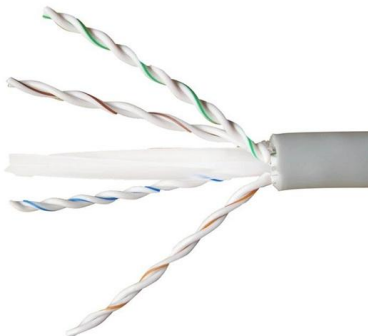


How to Choose the Best Cable Management for Your

The best cable management depends on your environment and goals. See how trays, raceways, and ties perform in real industrial applications.

Cable Tray Construction Pt1: marking and cutting (subscribe for Pt 2)

2. Cutting methods: Various cutting methods, including sawing, drilling, and punching. 3. Tool selection: Choosing the right tools for marking and cutting cable trays. 4.

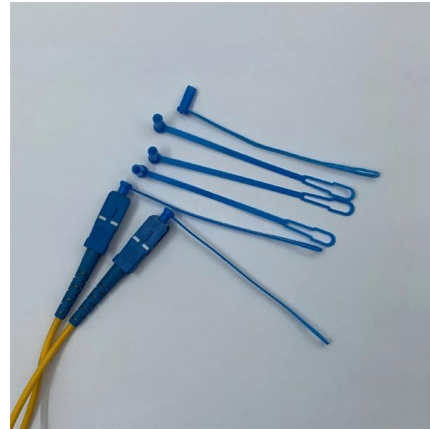


GUIDE CABLE TRAYS TECHNICAL

When fitting cable trays and their accessories, the products are cut on site to create changes of direction, adjust sections, etc. Damage can also occur during handling; as a result, both the

LEGRAND CABLE TRAYS TECHNICAL GUIDE

When fitting cable trays and their accessories, the products are cut on site to create changes of direction, adjust sections, etc. Damage can also occur during handling; as a result, both the



Cable Tray Technical Guide A practical guide to product selection and

In designing supports for a cable tray system, consideration should be given to the loads associated with future cable additions and any additional loading that may be applied to the cable tray system (e.g.,

Cable Tray Design and Standards Guide

The document outlines codes and standards that must be followed for design and construction of cable trays and their components. Standards listed include those



Cable Tray Cutting Tools , Cut Off Saws , Milwaukee

Back to Mounting Conduit, Cable Trays and Cabinets Cable tray cutting The MILWAUKEE® range of cable cutting tools is designed for making precise cuts in





Understanding Cross Arms in Electrical Systems: A Complete Guide

They are ideal for coastal areas or industrial zones where environmental conditions can lead to faster degradation of other materials. Importance of Cross Arms in Electrical Systems Cross arms serve



Cable Tray Construction Pt1: marking and cutting (subscribe for Pt 2)

In this video, we'll cover the essential steps of marking and cutting cable trays. We'll explore: 1. Measuring and marking: Accurate measurement and marking techniques for cable

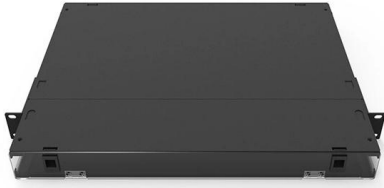
Galvanized Crossarms for Cable Trays: Analysis of Functions,

Galvanized crossarms for cable trays are typically made of Q235 low-carbon steel via rolling. Their cross-sectional forms are mostly U-shaped or L-shaped, and their thickness is classified



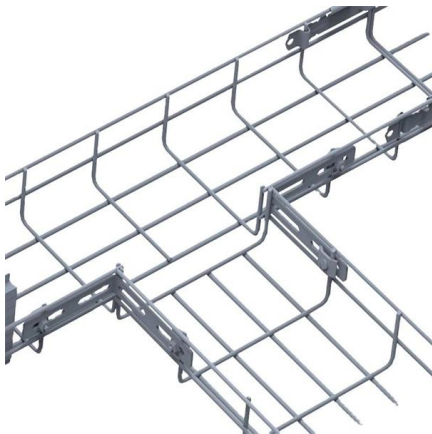
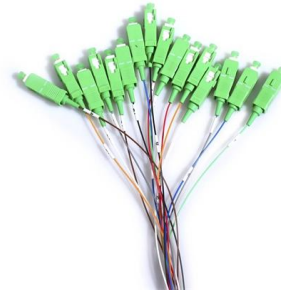
Omega Crossarm for Wire Mesh Cable Tray

The Offline Plate is an essential auxiliary tool for the production and processing of wire mesh cable trays. It is mainly used to fix and position the mesh during cutting, bending, and forming operations,



CUTTING GUIDELINE

Introduction Oglænd System manufacture and deliver Multidiscipline modular bolted support systems, cable trays, cable ladders and accessories for complete installation and containment of Instrument,



LEGRAND CABLE TRAYS TECHNICAL GUIDE

Not all cable trays are equivalent. The mechanical and electrical characteristics, tests, certifications, overall quality management, recommendations mentioned in this technical guide only apply to our

Contact Us

For datasheets, pricing, or custom telecom energy solutions, please visit:
<https://koskolong.co.za>