



**Adam Tas Corridor Energy**

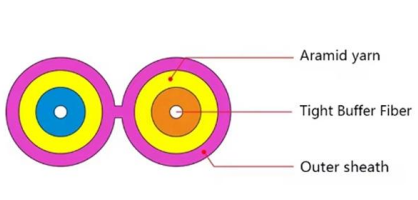
# **Cable tray deviation cutting method**





## Cable tray deviation cutting method

---



### Cable Tray Bend and Offset Formulas , PDF

The document discusses Metstrut cable tray systems, including their configuration, materials, dimensions, and compliance with industry standards. Key points: -

### How to Cut a Cable Tray

Selecting the right method for cutting a cable tray depends on the material, tray size, and precision needed. Proper technique ensures safety, clean edges, and minimal material waste.



### Cable Tray Technical Guide A practical guide to product selection and

A practical guide to product selection and installation This guide for engineers and installers has been developed by ABB as a practical reference regarding cable tray characteristics, installation, and

### Best Practice Guide to Cable Ladder and Cable Tray Systems

The radius for cable ladder and cable tray fittings is usually determined by the bending radius and



stiffness of the cables installed on the cable ladder or cable tray.



## How to Calculate Size of Cut to Set Cable Tray

By applying the following formula you can quickly find the size of the cut-out section that you need to cut out of the side of the cable tray, or gutter-type



## How to Manage Cables in Cable Trays: Principles and Methods

Learn how to manage cables in cable trays effectively with our comprehensive guide for cable classification, protection, and installation to ensure electrical system safety and efficiency.



## Cable Tray Installation Method Statement

This document provides a method statement for installing cable trays and trunking systems for building electrical services. It outlines 14 steps for the installation





## Annex I

This document deals with cables trays, cables and connector installation and segregation, cable trays earthing and E.M.C. directives. These rules shall be applied in the cabling engineering workflow for



## Cable tray manual

Instead of large conduits, cable channel may be used very effectively to support cable drops from the cable tray run to the equipment or device being serviced and is ideal for cable tray runs involving a

## IEEE 525-2007\_accepted

IEEE-SA Standards Board Abstract: The design, installation, and protection of wire and cable systems in substations are covered in this guide, with the objective of minimizing cable failures and their

## DATA ADJUSTABLE, EASY TO USE



SET INCREASE DECREASE POWER SWITCH

## SECTION 270528 -- CABLE TRAY FOR TELECOMMUNICATIONS

Route cable tray as shown on the Contract Documents. Where not shown on the Contract Documents, route cable tray in the most direct route possible, parallel to building lines.



### Cutting trunking and cable tray

Cutting trunking and cable tray scottchambers36  
Oct 12, 2011 angle blade cable tray cutting drill  
trunking Forums Electrical Advice Electrician Talk  
Forum



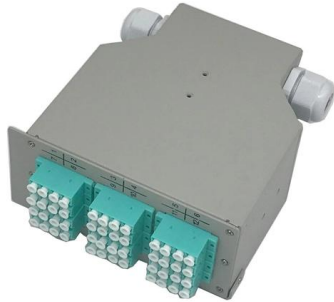
### Cable Tray Offset Calculator , Vertical, Horizontal & Compound Offset

Calculate horizontal, vertical, or compound cable  
tray offsets based on bend angle, offset distance,  
and available installation space. Use this tool to  
estimate sloped section length, horizontal run

### Installation of Cable Tray, Trunking And Accessories

Before beginning installation, be sure that the  
method statement for installation of cable tray,  
trunking, and accessories is approved by the  
project and construction manager before the





### **Cable Tray Offset Calculator , Vertical, Horizontal & Compound Offset**

Cable Tray Bend Offset Calculator Calculate horizontal, vertical, or compound cable tray offsets based on bend angle, offset distance, and available installation space.

### **Cable Tray Technical Guide A practical guide to product selection and**

The choice of method should be discussed with a local inspector. The best decision may be to extend only the cables, creating a discontinuity in the cable tray.



### **Cable Tray & Trunking 90 Degree Bend Cutting Measurements A to Z? Cable**

Cable Tray & Trunking 90 Degree Bend Cutting Measurements A to Z? Cable Tray 90 Degree Bend Formula In this video you can learn how to take correct measureme



### **Cable Tray Installation Method Statement**

Below is the detailed cable tray installation method statement not only for cable tray but also applicable for GI ladder and trunking for indoor and outdoor applications



## Mastering Cable Tray Installation , Step-by-Step Guide for a Seamless

Learn how to install cable trays correctly. Get the ultimate step-by-step guide on setting up a seamless and reliable cable management system.



## Best Practices for Cable Laying by EVIO

Measurement and Cutting Before cutting any cable, verify both the size and length against the project specifications. Accuracy here prevents



## Understanding IEC 61537: A Comprehensive Guide to

IEC 61537 is a crucial international standard established by the International Electrotechnical Commission (IEC). The Chinese national standard GB/T 21762



## Complete cable tray manual for electrical engineers and

A spread sheet based wiring management program may be used to control the cable fills in the cable tray. While such a system may also be used for controlling

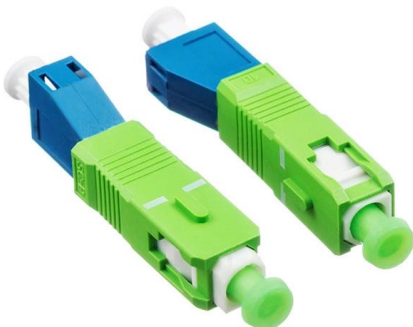


## How to cut Channels, Cable Ladders and Cable Trays

How to cut Channels, Cable Ladders and Cable Trays In the Oglænd System Cutting Guideline you can easily find out what the optimal cutting lengths/intervals

## Cable Tray Construction Pt1: marking and cutting (subscribe for Pt 2)

2. Cutting methods: Various cutting methods, including sawing, drilling, and punching. 3. Tool selection: Choosing the right tools for marking and cutting cable trays. 4.



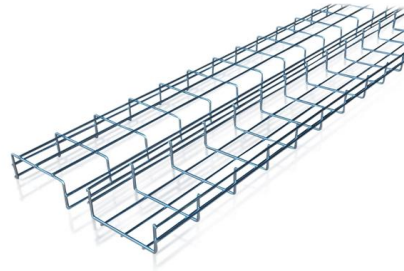
## Cable Tray Fabrication Method Statement

METHOD OF STATEMENT Cable tray fabrication and installation - Free download as Word Doc (.doc), PDF File (.pdf), Text File (.txt) or read online for free. The



## Cable Tray Technical Guide A practical guide to product selection and

Cable Tray Technical Guide A practical guide to product selection and installation This guide for engineers and installers has been developed by ABB as a practical reference regarding cable tray



### Cable Tray Construction Pt. 2: marking and cutting.

2. Cutting methods: Various cutting methods, including sawing, drilling, and punching. 3. Tool selection: Choosing the right tools for marking and cutting cable trays. 4.

### Support methods

TabLok profile is the fastest way to mount tray on walls, floors, racks and cabinets. Attach the bracket to the mounting surface, position tray over bracket and slide tray under tabs. Lock tabs down using a



## Contact Us

---

For datasheets, pricing, or custom telecom energy solutions, please visit:  
<https://koskolong.co.za>