



Adam Tas Corridor Energy

Cable tray installation inside the server rack





Cable tray installation inside the server rack

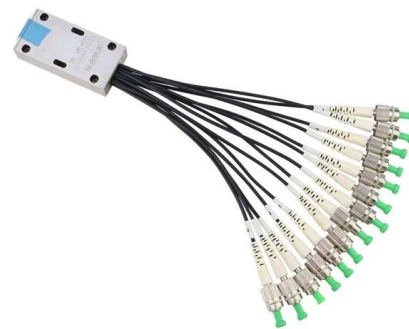


Data Center Cabling Guide , Snake Tray

Suspension eliminates the stress of mounting large volumes of cables and trays to server cabinets, and allows for easier rack movement or row expansion without

Server Rack Cable Management: Best Practices and

This guide offers a comprehensive look at server rack cable management, covering its definition, key components, common challenges, best



Best way to run cable into this rack?

Hi All, As you can see from the attached pictures, we currently have two groups of cables exiting the ceiling and entering our server rack. The one



Cable Pathways: A Data Center Design Guide and Best

A basket tray is a cable tray designed for light duty applications. The basket tray is lightweight



and easy to install; however a certain level of



Comprehensive Guide to Installing Components in a

Proper installation of components in a data center server rack is crucial for optimal performance, efficient maintenance, and long-term reliability of your IT

Server Room Cable Tray Guide: Best Types, Sizing

In this guide, we will walk through how to select, design, and install cable trays specifically for server room environments, helping you avoid common



Data Server Cable Management And 42U Rack Installation for Office

Data Server Cable Management And 42U Rack Installation for Office, School, and Factory Environments





The Complete Guide to Cable Trays , Snake Tray

Properly supported cables maintain secure connections to server racks, solar panels, network ports, and other endpoints. Cable trays maintain proper bend radii for



Server Rack Cable Management: What Is the Best

Data centers today consist of rows of server racks and network cabinets to support an abundance of data cables, power cords and network

Network Cable Management & Organization Guide

To avoid "spaghetti cabling" and lost data caused by damaged cables, you'll want



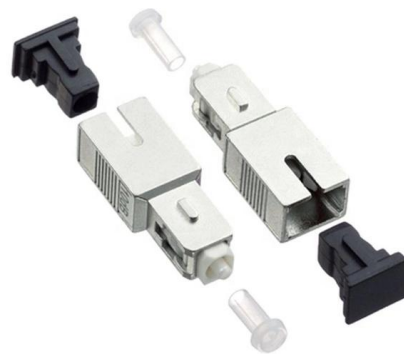
Basor Electric

BASOR product series for data centers are specially designed for the installation of fiber optic cables. The priority of this extremely flexible system is that the cable



Server Rack Cable Management Best Practices

Organizing server racks and managing cables meticulously is crucial for maintaining a tidy, operational, and dependable data center. Disorganized



Cable Tray Technical Guide A practical guide to product selection and

Cable tray length is selected based on the load to be supported, the distance between the supports (also referred to as the span), and handling and installation constraints.

7 steps for organizing your server rack space

Planning layout, proper installation, and clear cable labeling are key to keeping a server rack efficient and easy to manage. Using the right Rack Screws





Server Rack Cable Management: Best Practices and

On the other hand, effective server rack cable management keeps everything organized, functional, and prepared for future expansions. This guide

Guidelines for Server Rack Organization

Without an effective rack cable management solution, the cables inside a server rack can quickly turn into a tangled mess, creating significant



MPO-MPO Low Smoke Halogen Free Sheath
Multimode 10 Gigabit 12 pole OM4
Insertion loss <0.35dB Return loss >50dB



How To Cable A Server Rack

Learn how to properly cable a server rack with this comprehensive guide. From organizing cables to ensuring proper airflow, we cover all the

Network Rack Installation 101: Basics You Need to Know

Read the article to know the basics of network rack installation, from choosing the right rack type to cable management and maintenance tips.



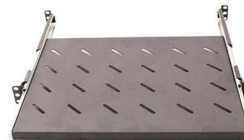


The Importance of Cable Trays in Your Server Rack

Cable trays streamline the chaos of cables into an organized system. They play an essential role in providing physical support to the cables while ensuring an efficient airflow in the

Method Statement installation of Cable Trays and Ladders

This method statement covers the site installation of the cable tray & ladders and the requirements of checks to be carried out.



Webit Cabling

5-INCH COLOR TOUCHSCREEN

Intuitive operation, easily accessible with just one touch



HOWTO: Server Cable Management , by Matt Simmons

Typical Server Rack The other major form factor for servers is rackmount. If you've never used it before, you might want to check the

How to Rack a Server: Step-by-Step Guide & Best

Learn how to rack a server with this detailed step-by-step guide. Includes setup tips, cable management, cooling, and safety practices.



How to Rack a Server: Essential Tips and Step-by-Step

Rack a server like a pro! Our step-by-step guide covers server rack setup, hardware installation, and cable management tips. Safely mounting your



Server Rack Cable Management: Best Practices and Comprehensive

Server rack cable management is a vital aspect of maintaining a reliable, efficient, and scalable IT infrastructure. By following best practices such as planning, using cable management accessories,



How to Rack a Server: Step-by-Step Guide & Best Practices

Learn how to rack a server with this detailed step-by-step guide. Includes setup tips, cable management, cooling, and safety practices.





How to Improve Cable Management for Server Racks

Final Thoughts: Mastering Cable Management for Server Racks Managing cables in server racks and network equipment racks is essential for

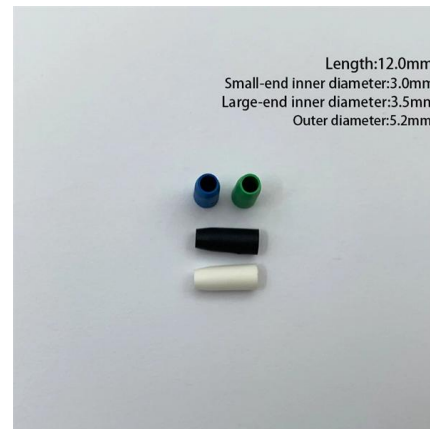


Best Practice Guide to Cable Ladder and Cable Tray Systems

This publication is intended as a practical guide for the proper and safe* installation of cable ladder systems, cable tray systems, channel support systems and associated supports.

How To Wire a Server Rack Tips & Best Practices

It's time to wire up your network or server rack! Don Schultz and Dave Harris walk you through essential tips and best practices for organizing your server rack for optimal performance



Rack Mount Cable Management

The server rack serves as the essential core element of the entire rack mount cable management, housing all critical equipment. As such, it is imperative to



Essential guide for Cable Tray Installation in Data Centres

Essential guide for Cable Tray Installation in Data Centres. Learn planning, materials, types, installation steps, safety, and maintenance for data halls.



Contact Us

For datasheets, pricing, or custom telecom energy solutions, please visit:
<https://koskolong.co.za>