



Adam Tas Corridor Energy

Cable tray paint film thickness



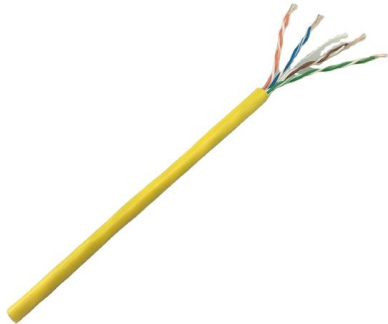


Overview

The total thickness of the two layers of this protection system has an approximate value of 160 μ m. A HDG coating of 85 μ m is considered class 8 according to the UNE-EN IEC 61537 standard and exceeds 850 hours in the neutral salt spray test (ISO 9227). The mechanical and electrical characteristics, tests, certifications, overall quality management, recommendations mentioned in this technical guide only apply to our own cable management ranges and cannot under any circumstances be transposed to si osure, overheating or. of galvanized products is a linear function of the thick-ness of he zinc coating. Cable tray (or cable ladder) systems are a popular alternative to electrical conduit systems, as they have an outstanding record for dependable service, design flexibility and cost savings in commercial and industrial applications.



Cable tray paint film thickness



Cable Tray and its types & Sizes

A cable tray is a type of a containment used to support insulated electrical cables used for power distribution, control, and communication.

Cable Tray Technical Guide A practical guide to product selection and

A practical guide to product selection and installation This guide for engineers and installers has been developed by ABB as a practical reference regarding cable tray characteristics, installation, and



Basor Electric

The total thickness of the two layers of this protection system has an approximate value of 160mm. A HDG coating of 85mm is considered class 8 according to the

Galvanised vs Painted Cable Trays: Which Is Right for You?

Which are more durable, galvanised or painted cable trays? Galvanised cable trays are generally



more durable. Their zinc coating protects against rust, making them ideal for more



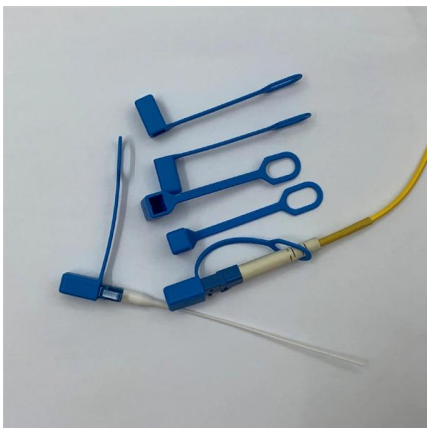
Cable Tray Finish Guide: HDG, Spray, Anodising

This guide breaks down the five main cable tray finishes. We'll cover: what they are, how they're made, where to use them,



Technical Requirements for Wire Mesh Cable Trays

Technical Specifications for Wire Mesh Cable Trays Wire mesh cable tray technical requirements are crucial for the success of cable management and wiring systems. Our wire mesh cable trays undergo



Painting Method Statement for BSEZ Project , PDF

This document provides a work method statement for painting steel structures, supports, cable trays, equipment and piping at a construction site. It outlines the



Painted Cable Tray

Magdiel Engineering offers painted cable tray with durable finishes, ensuring corrosion resistance, aesthetic appeal, and reliable cable management in all



BASOR BASKET CABLE TRAY FINISH INFORMATION

R BASKET CABLE TRAY color of their choice. The average paint thickness of 1.2. mils (30 microns) to 3.0 mils (75 microns) BASOR POWDER COAT reco. ded applications: interior environment. HD Hot

Microsoft Word

Coating can be applied by means of airless spray equipment in a single pass not more than 1mm-1.2mm (wet coating thickness) to prevent slumping. Surface shall measure by wet film thickness gauge. If



Electrical Engineering Finishing of cable Tray Industry Learners

A combination of carbonates, hydroxides and zinc oxides forms a protective film to protect the zinc itself. Resistance to corrosion is directly related to the thickness of the coating and the harshness of the



IEEE 525-2007_accepted

IEEE-SA Standards Board Abstract: The design, installation, and protection of wire and cable systems in substations are covered in this guide, with the objective of minimizing cable failures and their



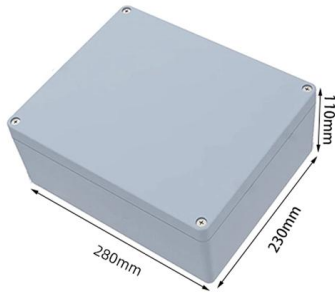
Galvanized Cable Tray Zinc Coating Standards and

Comprehensive guide to galvanized cable tray zinc coatings. Know HDG vs electro-galvanizing standards (GB/T 13912, GB/T 26941), thickness

B-Line series Cable Tray Design Considerations

Snow load is measured by density and thickness, and it can be significant for a cable tray that is completely full of cables or a cable tray that has covers. The density of snow varies greatly due to its





Self-extinguishing paint for electrical cables

AF Cable Coat Self-extinguishing paint for electrical cables AF CABLE COAT is a water-based fireproof paint that substantially delays fire by combustion of the

Cable Tray Finish Guide: HDG, Spray,

This guide breaks down the five main cable tray finishes. We'll cover: what they are, how they're made, where to use them,



LoRawan outdoor base station

- * Industrial Internet gateway
- * Compatible with LoRaWAN network,
- * ClassA/B/C mode
- * Support 8/16 channel
- * Supports PoE power
- * supply and backup battery power supply
- * 10KV lightning protection



Technical Guidelines for Cable Tray Installation and

Outdoor: Hot-dip galvanized or stainless steel trays. Corrosive/High Humidity: Aluminum alloy or fiberglass-reinforced plastic trays. Based on Load Capacity:

Cable Tray Installation Specifications , PDF , Sheet

This document provides installation guidelines for cable trays, including: 1) Cable trays come in perforated and ladder types, with perforated trays made of steel



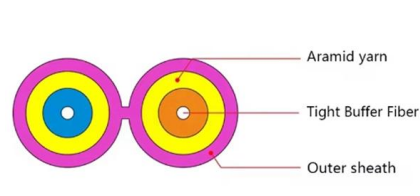
Swifts cable tray

Available on cable tray and Swiftrack support systems 1 British standards Legrand ensures that all of the materials used during the construction and finishing of their products conform to the relevant



12-SDMS-06

Cable tray shall be fabricated either from corrosion resistant metal such as aluminum alloy or carbon steel with corrosion resistant coating such as zinc coatings as specified in the data schedule.



B-Line series Cable Tray Design Considerations

As an industry leader in cable tray, Eaton offers one of the widest ranges of cable management solutions available in the market today with its B-Line series portfolio. With unmatched quality and service, we



12-SDMS-06

Carbon steel used for cable trays shall be protected against corrosion by the following processes: Hot-dip galvanized zinc after fabrication in accordance with ASTM A123/A123M, Coating Grade 65 with



Cable Trays and Reels - Can EZ cable tray be painted?

Cablofil's EZ tray can be field painted. Our plating process leaves a very clean and paintable surface. It has the correct roughness for good adhesion. The surface does not include an oily film, typical on

Materials Used & Finishing Of A Cable Tray

There are many types of materials and finishings used to manufacture a Cable Tray. Hutaib Electricals, Cable Tray Manufacturer in India offers a wide range of cable trays in India. Today Cable



Cable Tray Technical Guide A practical guide to product selection and

In designing supports for a cable tray system, consideration should be given to the loads associated with future cable additions and any additional loading that may be applied to the cable tray system (e.g.,



Cable Tray Finish Guide: HDG, Spray, Anodising

Understand cable tray finishes: HDG, electro-galvanising, powder coating, anodising & duplex. Compare cost, corrosion resistance & best uses.

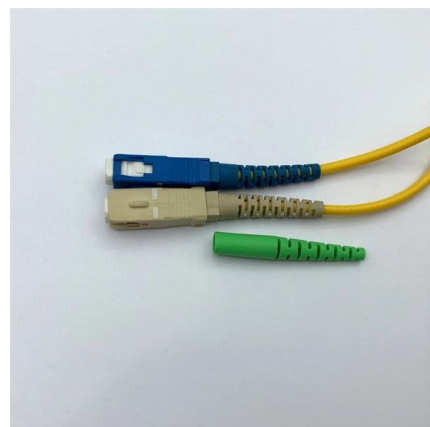


GUIDE CABLE TRAYS TECHNICAL

NEMA VE 1-2017 Specifies requirements for metal cable trays and associated fittings designed for use in accordance with the rules of Canadian Electrical Code, Part I and the National Electrical Code®

Powder Coating for Outdoor Cable Trays: What Southeast Asian

Comprehensive guide to powder coating vs hot-dip galvanizing for outdoor cable trays. Learn corrosion resistance standards, ISO 12944 ratings, maintenance requirements, and how to sell on Alibaba





Guide to Choosing Between Stainless Steel and Painted Cable Trays

Painted steel needs regular repainting, especially in demanding environments, incurring additional costs over time. Q: What are the aesthetic differences between Stainless Steel and Painted Cable Trays?

Contact Us

For datasheets, pricing, or custom telecom energy solutions, please visit:
<https://koskolong.co.za>