



Adam Tas Corridor Energy

Cable tray selection steps





Cable tray selection steps



B-Line series Cable Tray Design Considerations

Our Cable Tray Design Considerations Guide details key factors to consider when designing cable tray systems for industrial and commercial applications. It also demonstrates how Eaton's solutions and

Cable Tray and Conduit Installation Method Statement

Step-by-step cable tray and conduit installation method with safety, quality and inspection procedures as per IEEE standards.



Cable Tray Manufacturers

3. In addition to the above conditions, tray type, trough type, step type, glass anticorrosive and flame retardant cable tray or steel ordinary type cable tray can be selected according to the on-site

Selecting Cable Trays: A Complete Guide for Cable

In this guide, I'll walk you through everything you need to know about choosing the right cable



trays for your cables. Whether you're dealing with power



Instrumentation Cable Tray Installation Checklist and

Step-by-step instrumentation cable tray installation guide with safety tips, standards, inspections, and downloadable Excel checklist.



Cable Tray Technical Guide A practical guide to product selection and

A practical guide to product selection and installation This guide for engineers and installers has been developed by ABB as a practical reference regarding cable tray characteristics, installation, and



A Guide to Installing and Supporting Electrical Cable Trays

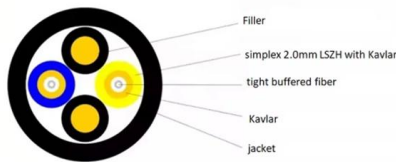
A professional guide to installing electrical cable tray systems per NEC Article 392. Covers support, securing cables, and fill calculations.





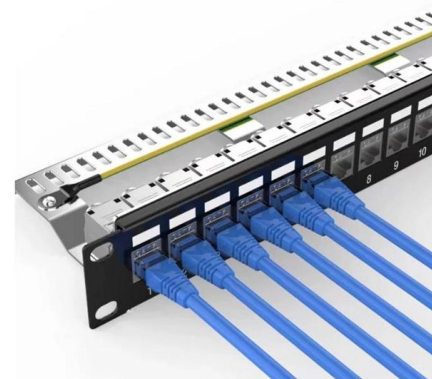
100+ Essential Questions Answered About Cable Trays:

Discover over 100 expert answers about cable trays, covering key topics like material selection, load capacity, installation methods, and maintenance.



The Ultimate Guide to Selecting the Right Cable Tray for

Material Selection: Choose the appropriate material for your cable tray based on the environmental conditions and durability requirements. Cable Tray Type:



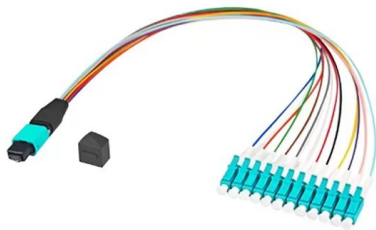
Cable Tray Selection Process

The selection requires a compromise with the considerations being available space, minimum bending radius of cables, ease of cable pulling, and cost. The typical radius is 24 in. Fittings are also available



Cable Tray Selection Process

The document outlines a seven-step process for selecting a cable tray system, which includes choosing material, load class, type, size, fittings, considering deflection, and grounding capacity.



Cable Tray Technical Guide A practical guide to product selection and

Cable tray length is selected based on the load to be supported, the distance between the supports (also referred to as the span), and handling and installation constraints.

Cable Tray Size Calculation for Project Engineers

Cable tray size calculation is important for ensuring safe cable installation, proper heat dissipation, and enough spare capacity for future



Cable Tray Selection Process

Cable tray materials may not respond the same way in different environments. Chemicals or combinations of chemicals have corrosion effects on some materials that can be compounded by



Best Practices for Installing Cables in Trays

Quick Installation Checklist (Key Steps) Cable tray cable installation generally follows these steps: Inspect cables before



GUIDE CABLE TRAYS TECHNICAL

NEMA VE 1-2017 Specifies requirements for metal cable trays and associated fittings designed for use in accordance with the rules of Canadian Electrical Code, Part I and the National Electrical Code®

Cable Tray Installation

Learn everything about cable tray installation with our complete guide. Discover types, steps, and safety tips for efficient electrical cable management.





How to Select the Right Electric Cable Tray for Your Application

Additionally, opting for a ladder cable tray design would ensure proper ventilation and ease of maintenance, making it ideal for the facility's complex cable management needs. Conclusion

Ultimate Guide to Cable Tray Selection - Types,

Learn how to choose the best cable tray system for your needs. Explore types, materials, installation tips, and NEC compliance in this expert guide.



Cable Tray Design, Layout, and Overall Wiring Planning

Learn about effective Cable Tray Design and Layout for electrical systems. Our guide covers planning, material choice, safety,

A Guide to Selecting Cable Trays for Engineering Design

Learn about the essential factors when selecting cable trays for engineering design. Understand load calculations, safety factors, material choice,



AS/NZS 3008 (2025) Cable Sizing Guide: Example

Size active, neutral, and earth cables using AS/NZS 3008 (2025). The guide covers current capacity, voltage drop, and short-circuit calculations with examples.



The Ultimate Guide to Selecting the Right Cable Tray for

In this comprehensive guide, we will explore the intricacies of cable trays and provide you with the knowledge needed to select the perfect cable tray system for your



CABLE TRAY SYSTEMS GUIDE

In order to determine the most appropriate and economical system, a class should be selected that reflects the actual total working load and support span for each application. Some applications may





Best Practice Guide to Cable Ladder and Cable Tray Systems

This guide covers cable ladder systems, cable tray systems, channel support systems and associated supports intended for the support and accommodation of cables and possibly other electrical



Selecting Cable Trays: A Complete Guide for Cable

Final Thoughts on Selecting Cable Trays
Choosing the right cable tray doesn't have to be complicated. Start by understanding your cable types and

Contact Us

For datasheets, pricing, or custom telecom energy solutions, please visit:
<https://koskolong.co.za>