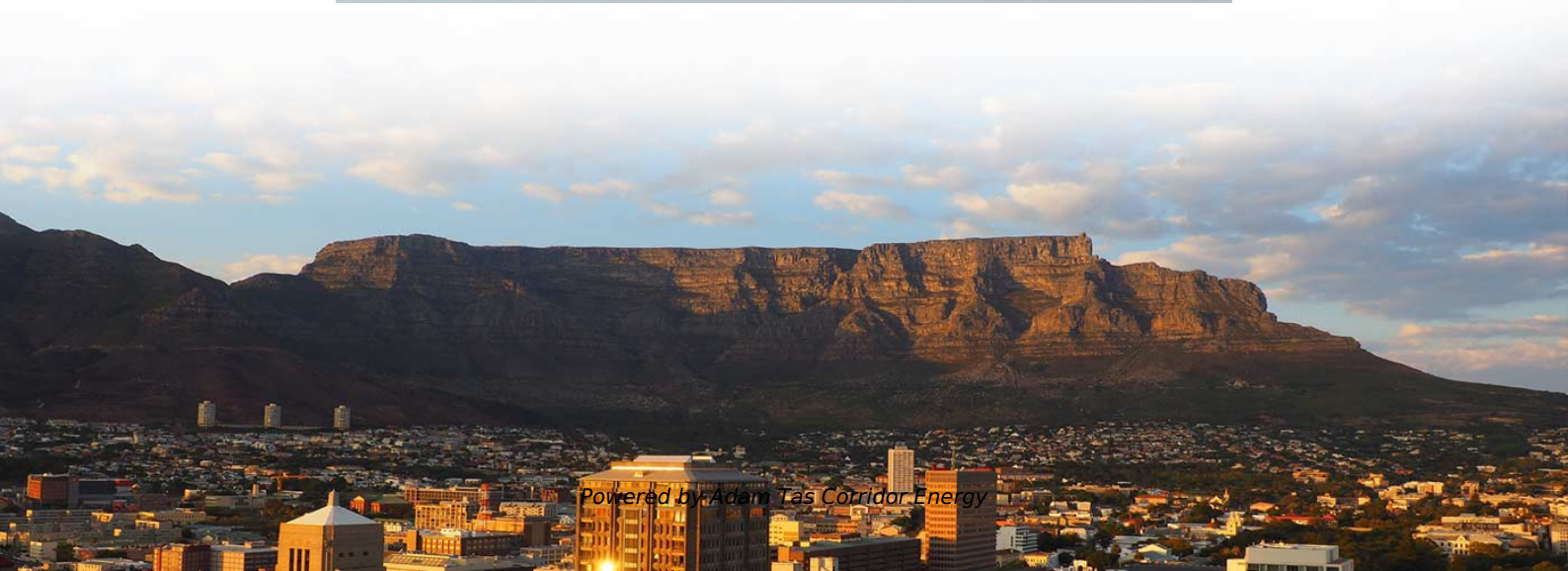
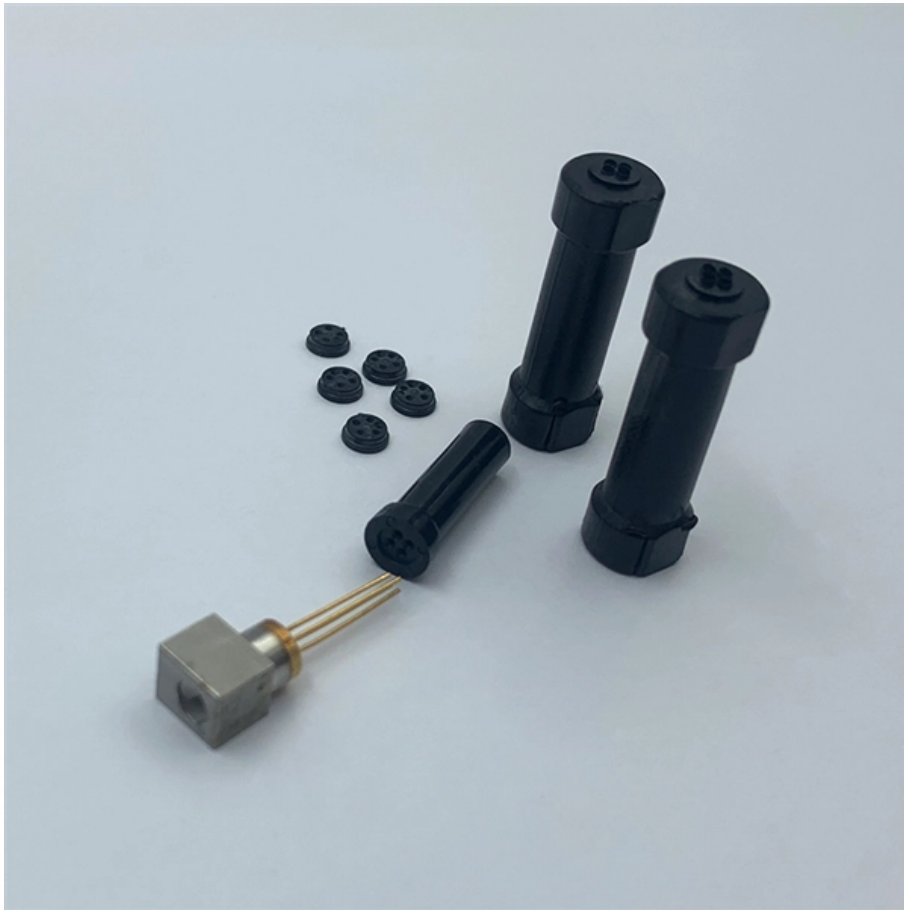




**Adam Tas Corridor Energy**

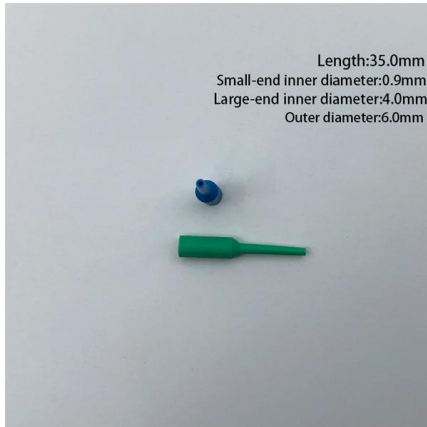
# **Cable tray specifications for tunnel engineering**





## Cable tray specifications for tunnel engineering

---



### Cable Trays Selection Guide: Types, Features,

Cable trays are components of support systems for power and communications cables and wires. A cable tray system supports and protects both power and

### Layout 1

Nearly every aspect of cable tray design and installation has been explored for the use of the reader. If a topic has not been covered sufficiently to answer a specific question or if additional information is



### (PDF) EDS 02-0041 CABLE TUNNEL DESIGN DESIGN

EDS 02-0041 CABLE TUNNEL DESIGN MANUAL  
Document Number: EDS 02-0041 Version: 4.1  
Date: 30/06/2015 THIS IS AN UNCONTROLLED DOCUMENT, THE



### EAE Electric , Busbar Energy Distribution Systems

In this interactive page, you can explore our busbar system, cable tray, support system,



lighting system, and fit-out products interactively for healthcare

OEM/ODM  
CUSTOMIZATION AVAILABLE



## Cable Tray Technical Guide A practical guide to product selection and

This guide for engineers and installers has been developed by ABB as a practical reference regarding cable tray characteristics, installation, and requirements. In addition to presenting our own product

### Plumbing Specialties

All tunnels shall include an aluminum ladder-type cable tray for future use for ITCOM and other services. Tray should be approximately 12" wide x 4" deep, with 9" rung spacing and 12" minimum bending



### Cable Trays for Tunnel Cable Management

Explore how cable trays improve cable management in tunnel environments with safety, space efficiency, and reliable cable support solutions.





## Product Catalogue Cable Management Solutions

With over 20 years of experience T& B Cable Tray provides a complete solution in cable management systems including design, manufacturing and technical support by offering a complete solution for



## IEEE 525-2007\_accepted

IEEE-SA Standards Board Abstract: The design, installation, and protection of wire and cable systems in substations are covered in this guide, with the objective of minimizing cable failures and their

## snake-rail-brochure-aug-2023 dd

Snake Tray is a leading provider of cable management solutions for transit, tunnel and wayside environments. All Snake Tray products comply with NFPA 130 and NFPA 502 and are made in the



## Zamet

ZG - Cable trays for highway and railway tunnels  
- Applications: Support system for motorway and railway walkways, compliant with CEI 64-20 standard. IMQ



## FRP Cable Tray Systems: Specifications, Standards, and Engineering

FRP cable trays offer corrosion immunity, 50% faster installation, and EMI transparency. We cover specifications, standards compliance, and application guidance for engineers.



## GUIDE CABLE TRAYS TECHNICAL

NEMA VE 1-2017 Specifies requirements for metal cable trays and associated fittings designed for use in accordance with the rules of Canadian Electrical Code, Part I and the National Electrical Code®

## Complete cable tray manual for electrical engineers and

Complete cable tray manual for electrical engineers and designers (on photo: power cable management ladder tray systems assembled aluminum cable tray ladder)





## Full cable tray systems specification document

B. Cable tray systems are defined to include, but are not limited to straight sections of [ladder type] [trough type] [solid bottom type] [channel type] cable trays, bends, tees, elbows, drop-outs, supports

## Cable tray manual

Nearly every aspect of cable tray design and installation has been explored for the use of the reader. If a topic has not been covered sufficiently to answer a specific question or if additional information is



## cable tray solutions For tunnels guide

tunnels ass reinforced polyester) cable trays. These solutions provide optimum safety, flexibility and excellent corrosion resistance for ety lighting, signs, ventilation, etc. With legrand at your side, you

## LEGRAND CABLE TRAYS TECHNICAL GUIDE

Not all cable trays are equivalent. The mechanical and electrical characteristics, tests, certifications, overall quality management, recommendations mentioned in this technical guide only apply to our

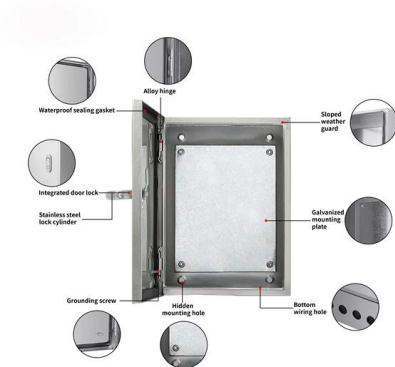


### B-Line series Cable Tray Design Considerations

Cable tray must be capable of supporting not just the weight of the cable, but also the weight of any equipment or materials attached to the cable tray. Additionally, dynamic environmental elements

### TUNNEL AND RAIL SYSTEM SOLUTIONS

General Introduction Walkways are designed for use in tunnel rail system projects during emergency situations or when a train needs to stop on the track due to a malfunction. They facilitate the



### IEC Standard for Cable Tray: Complete Technical Guide

One of the most recognized frameworks globally is the IEC standard for cable tray systems. This standard ensures safety, durability, and performance



## **Cable Tray Technical Guide A practical guide to product selection and**

This guide for engineers and installers has been developed by ABB as a practical reference regarding cable tray characteristics, installation, and requirements.



## **CABLE MANAGEMENT SYSTEMS CABLE TRAYS & ACCESSORIES**

Fiberglass Reinforced Plastic (FRP) Cable Tray / Ladder SFSP Fiberglass Reinforced Plastic (FRP) Cable Management Systems are designed, manufactured, and tested to be installed in most harsh

## **CABLE TRAY SYSTEMS GUIDE**

Some applications may require the cable tray to support the weight of a single, dead object in addition to the cable loads. Specifications typically require this to be applied at the midpoint of the span between



## **Technical Specification for Cable tray installation and cable laying work**

1. Scope :- This specification covers the following major activities; - Fabrication and installation of Mild Steel (MS) support structure for Galvanized Iron (GI) Cable tray. - Installation of perforated GI Cable



## RECOMMENDED SPECIFICATIONS OF JUNCTION BOX AND CABLE TRAY

Basic requirements for some aspects of the E&I components (e.g., cable tray and junction box) can be found in the ABS Rules for Building and Classing Mobile Offshore Drilling Units (MODU Rules), as

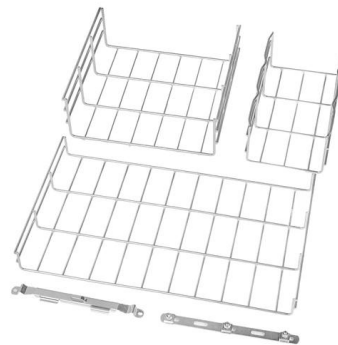


## Cable Tray Specifications and Accessories , PDF

This document provides specifications for perforated and solid cable tray systems including: - Straight sections that come in various heights, bottom types, return

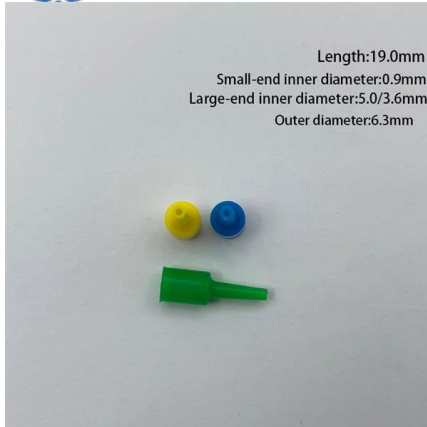
## Guide to cable support systems

Four different mesh cable tray types are available, depending on the requirements, area of application and cable quantity. The innovative Magic connection system of the GRM and G-GRM mesh cable



## Best practice guide to cable ladder and cable tray

Cable ladder and cable tray systems The following recommendations are intended to be a practical guide to ensure the safe and proper installation of



## **CABLE MANAGEMENT SYSTEMS CABLE TRAYS & ACCESSORIES**

We manufacture a wide range of products capable of providing the characteristics which respond to the proposed application, along with quality of assembly, speed of installation, and cost-saving cable trays.



## **Contact Us**

---

For datasheets, pricing, or custom telecom energy solutions, please visit:  
<https://koskolong.co.za>