



**Adam Tas Corridor Energy**

# **Cable tray straight-through tee installation diagram**





## Cable tray straight-through tee installation diagram

---



### Cable tray manual

Nearly every aspect of cable tray design and installation has been explored for the use of the reader. If a topic has not been covered sufficiently to answer a specific question or if additional information is

### Kable Kontrol Cable Tray tees and x junction instructions

Tees and X Junctions Wire Mesh Cable Tray Reducer and Tee Junction Instructions CABLE TRAY CUTTING & BENDING GUIDES CONFIGURING CABLE TRAYS FOR INSTALLATION Horizontal Tees



### Mounting instructions

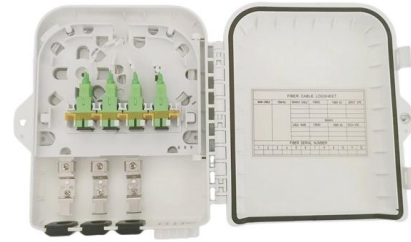
Electrically trained specialists charged with installing cable support systems and cable trays. These instructions are based on the standards valid at the time of compilation (12/2023). Please read the

### Cable Tray Technical Guide A practical guide to product selection and

A practical guide to product selection and



installation This guide for engineers and installers has been developed by ABB as a practical reference regarding cable tray characteristics, installation, and



### **Cable Tray Technical Guide A practical guide to product selection and**

Cable tray is considered to be a system. It must provide continuous support for cables, and the electrical continuity of the cable tray system must be maintained.



### **Cable Tray Spacing Standards for Installation and Safety**

Proper installation can significantly reduce electromagnetic interference, prevent fire hazards, and improve overall efficiency. This article



### **Connecting Cable Trays: Your Guide to Secure and**

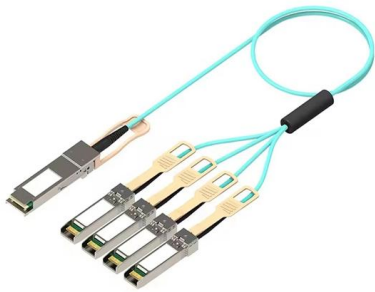
Learn common methods for connecting cable trays safely and efficiently. Our guide covers splice plates, quick-connects, and key tips for secure





## Installation Guide

Each configuration of radius, intersection, tee, reduction or other custom install ships complete with steel bottom, poly (UL rated 94V-0 flame rating) and attachment hardware.



## Cable Tray Installation

Learn everything about cable tray installation with our complete guide. Discover types, steps, and safety tips for efficient electrical cable management.

## GUIDE CABLE TRAYS TECHNICAL

If it has excellent electrical continuity and is integrated in the installation's equipotential bonding system, a metal cable tray reduces the coupling's impact and thus contributes to good EMC of the electrical



## Installation Guide

Installation Guide WBT has pioneered the innovation of cabletray/basket tray in the last decade. Products such as Shaped Tray, PreForm, WBTForm and NoSplice have allowed users and installers



### **Cable Tray / Ladder Tray INSTALLATION PowerTray**

General Installation Guidelines: For more information refer to the latest NEMA standards and local building codes. Trough tray field support and frequency depends on the weight and construction



### **Cable Tray Ladder Trunking Wire Basket Installation**

Cable trays are available in different configurations, straight sections are available to route cables in a horizontal or vertical plane. Fittings are available to route cables

### **Best Practice Guide to Cable Ladder and Cable Tray Systems**

This publication is intended as a practical guide for the proper and safe\* installation of cable ladder systems, cable tray systems, channel support systems and associated supports.



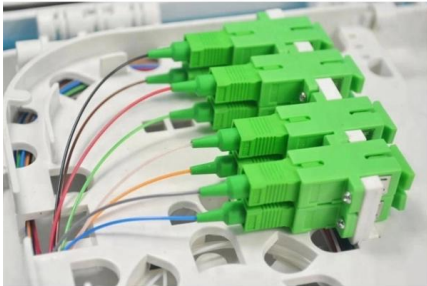


## Cable Tray Installation CAD Blocks , DWG Electrical

Download free Cable Tray Installation CAD Blocks in DWG format. Perfect for electrical layouts, MEP coordination, and infrastructure design in AutoCAD.

## Cable tray manual

These documents: ANSI/NEMA VE-1, Metal Cable Tray Systems; NEMA VE-2, Cable Tray Installation Guidelines; and NEMA FG-1, Non Metallic Cable Tray Systems, are an excellent industry resource in



## DIY Installation: Mastering Light Duty Cable Tray Setup

Explore our comprehensive DIY guide to master the installation of light-duty cable trays. From planning to cable organization, follow step-by-step instructions for a tidy and efficient cable

## Cable Tray Installation Guidelines , PDF , Galvanization

This document provides details on installing cable trays and their support systems. It includes diagrams showing how to mount cable trays on walls using pre



## CableTray Book English

Determine the tray series using the NEMA load/span designations page A14, and sizing cable tray page A21. Select nominal depth and width of tray based on cable loading. See sizing cable tray page A21.



## Mounting instructions

The mounting drawings of the screw-on cable tray systems show either perforated or unperforated cable trays. All the connectors, fittings and accessories shown can be mounted on both perforated and



## Document DICOS

For Cable Tray Installers: NEMA VE 2-2018 (hereinafter referred to as NEMA VE 2) is intended as a practical guide for the proper installation of cable tray systems.



## INSTALLATION GUIDE

To ensure that the complete ladder tray wiring system performs as designed, it is important that it is properly installed. Personal injury as well as property damage will result if proper installation and



## CABLE TRAY SYSTEMS GUIDE

The Ladder Tray features light, rugged, tubular steel construction. It is designed for mechanical support and strain relief in long runs of cable and creates a smooth gradual bend for cable. Rail and stringer

## Best Practice Guide to Cable Ladder and Cable Tray Systems

Introduction This publication is intended as a practical guide for the proper and safe\* installation of cable ladder systems, cable tray systems, channel support systems and associated supports.



## Contact Us

---

For datasheets, pricing, or custom telecom energy solutions, please visit:  
<https://koskolong.co.za>