



Adam Tas Corridor Energy

Cable tray support quota mother and daughter





Cable tray support quota mother and daughter

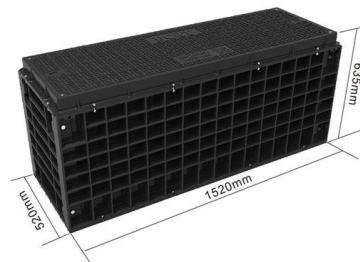


Criteria for Sizing, Designing, Installing and Supporting of Cable-Tray

Vertical-tray supports shall provide secure means, other than friction, for fastening cable trays to supports. 9.7.4 Supports shall be located so that connectors between horizontal straight sections of

Vertical Straight Cable Tray Support Spacing , Eng-Tips

"Cables with copper conductors, regardless of their voltage class, installed in vertical runs should be supported in accordance with the following [attached a table].



Cable Tray Technical Guide A practical guide to product selection and

Cable tray length is selected based on the load to be supported, the distance between the supports (also referred to as the span), and handling and installation constraints.

A Guide to Installing and Supporting Electrical Cable Trays

A professional guide to installing electrical cable tray systems per NEC Article 392. Covers



support, securing cables, and fill calculations.



Cable Tray

All changes of direction must be supported in the immediate vicinity of the joints (distance ≤ 150 mm) by an appropriate supporting structure. Inclined cable trays

Cable Tray Load Calculation and Sizing: Your Easy Guide

Worried about cable tray capacity? Learn simple cable tray load calculation steps. This guide helps you pick the right tray every time, keeping



Cable Tray Supports , Information by Electrical Professionals for

Support for the cables inside or for the tray? What type of tray? Ladder or ventilated, metal or aluminum wire or flat solid bottom? It may be in the assembly specs.



Cable Tray Sizing

Cable tray must be able to support the weight of the cables, with a margin of ignorance. The limiting factor is often the fixings rather than the tray itself. In most circumstances I would

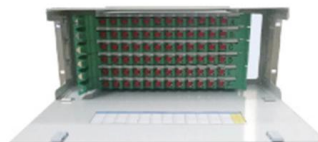


B-Line series Cable Tray Design Considerations

As an industry leader in cable tray, Eaton offers one of the widest ranges of cable management solutions available in the market today with its B-Line series portfolio. With unmatched quality and service, we

Guide for Design of Electrical Cable Tray Systems

Guidelines to be used in the design of cable tray systems as applied to the electrical industry are proposed. Information is presented in a manner approaching standardization for tray layouts. Basic



Cable Support Load Distribution

Figure 40 shows how the cable support system distributes the weight load. Figure 40. Distributing weight across the cable support system.



How to Choose the Right Cable Tray Support for Your

Selecting the correct cable tray support is crucial for ensuring safety, compliance, and efficiency in electrical installations. The right support system can



CABLE TRAY SYSTEMS GUIDE

Hubbell's NEXTFRAME® Ladder Tray is the effective and widely used cable runway that supports and delivers bundles of cable between cabinets, racks, and closets, along walls, and suspended from

Cable Tray Sizing & Load Calculations Made Simple

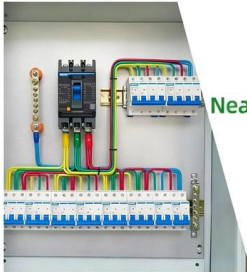
Contact Ned-Tech Cable Tray Ltd for design assistance and fast delivery. Correct sizing prevents sagging, overheating, and premature failure. You don't need a PhD--just a consistent





DETAILS DISPLAY

Focus On Every Detail



01

Neat & Clean Layout

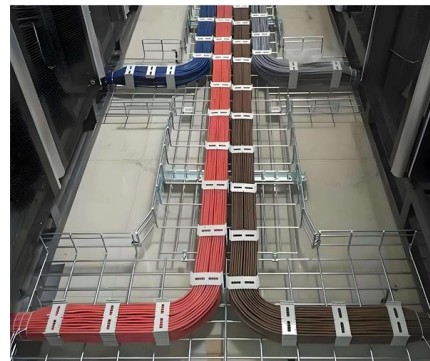
Cleaner arrangement of components, Easy to operate

Cable Tray Sizing & Load Calculations Made Simple

Step 2: Choose Tray Type and Width For heavy power cables or long spans, ladder trays typically perform best. For mixed small cables, perforated works well. Width is set by total cable area

Cable Tray Capacity Calculator

Cable tray capacity refers to the maximum number of cables that can be installed in a cable tray without exceeding a specified fill ratio. The fill ratio is the percentage of the cross-sectional area of the tray

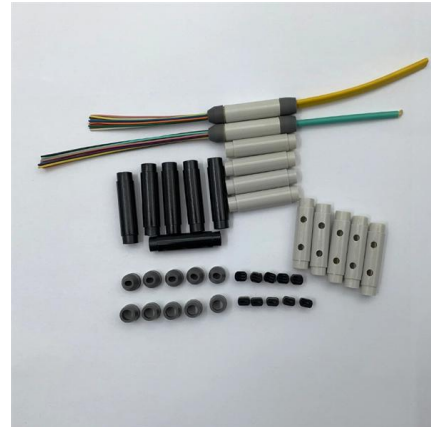


Calculating cable tray weights and support requirements

The contractor could have broken these cables up into multiple cable trays to lessen the weight however he chose to run them all in one, perhaps to save on cable tray cost. If that's the case

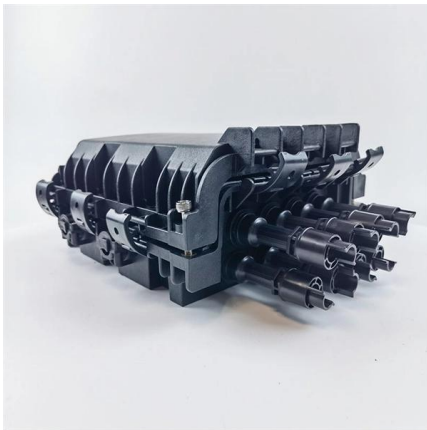
IEC 61537 Cable Support Systems Guide

The document discusses cable support systems used internationally. It provides information on calculating cable loads using cable weight tables to determine the



Cable Tray Technical Guide A practical guide to product selection and

SOLID-BOTTOM CABLE TRAY Providing additional cable protection, solid-bottom cable tray is sometimes preferred to support and protect numerous small instrumentation and control cables.



Best practice guide to cable ladder and cable tray

Cable ladder and cable tray systems The following recommendations are intended to be a practical guide to ensure the safe and proper installation of



Guide to cable support systems

The load capacity of the cable trays according to the support width can be read off in the diagram using load curves - here, shown as an example for a cable tray with the tray widths 100 to 600 mm.





Westinghouse AP1000 Design Control Document Rev. 19

Cable trays and their supports are designed to maintain structural integrity. The stresses are maintained within the allowable limits as specified in subsection 3F.3.3.



Important design considerations for cable ladder and

Consequently, only cables where mechanical protection is provided by a suitable sheath, for example, PVC sheathing or steel wire armouring, can be

A Guide to Installing and Supporting Electrical Cable Trays

This guide covers the critical steps, from selecting the right electrical cable tray and performing accurate cable fill calculations to managing a safe cable pull through



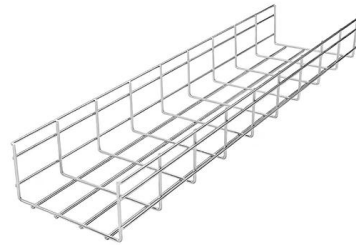
Overview of support systems for cable and equipment

There are six major types of cable supports: cable runway, center-rail systems, cable tray, wire basket, bridle rings or cable hooks, and wireway. Each is designed for



Best Practice Guide to Cable Ladder and Cable Tray Systems

Introduction This publication is intended as a practical guide for the proper and safe* installation of cable ladder systems, cable tray systems, channel support systems and associated supports.



"Calculation for Cable Tray Support 1-CTSP-293-158."

In the design review method, Justify the technical adequacy of the calculation and explain how the adequacy was verified (calculation is similar to another, based on accepted handbook methods,

HOW TO CHOOSE THE RIGHT CABLE TRAY

A cable tray is a system used to support and route cables and wiring in an industrial environment. Cable trays are used in various installations, including commercial construction, data centers, computer





SELECTION OF CABLE TRAYS

The cable volume is an important criterion for the selection of the correct cable support system; for which there must be sufficient space in the cable tray. As the

Vertical Straight Cable Tray Support Spacing , Eng-Tips

I could not find the clause in NEMA VE-2 that states the maximum support interval (spacing) for vertical straight cable tray runs. Can anyone refer me to any reference that may help



Guide to cable support systems

Cable support systems for cable support structures are used to bridge large loads and support spacings and to create complex section routes. The systems allow large support spacings of wide span systems

Contact Us

For datasheets, pricing, or custom telecom energy solutions, please visit:
<https://koskolong.co.za>