



Adam Tas Corridor Energy

Cable tray suspension wire fixing method





Overview

There are various ways of including strain relief sections, but the preferred method is to offset the cable by at least 2 cable diameters for each strain relief section. In practise this means that only ONE fixing is offset from the main vertical run. When developing our cable support OBO can offer reliable solutions for systems, three attributes are at the routing and fastening cables securely core of what we do: efficiency, resili- for each of these installation challenge-ience and safety. This publication is intended as a practical guide for the proper and safe* installation of cable ladder systems, cable tray systems, channel support systems and associated supports. Whether you're running cable tray, basket or conduit, Gripple suspension systems make installation quicker, discreet and easier to adjust, without the extra hassle of cutting rod or handling long lengths of strut on-site. When it comes to fixing and mounting cable trays, these methods should be considered: Suspended Mounting with Rods: This method uses threaded rods to suspend the cable tray.



Cable tray suspension wire fixing method

Best Fixing and Mounting Options for Cable Trays , CMW

Discover the best fixing and mounting options for cable trays and wire mesh basket trays. CMW shares tips for efficient cable management.



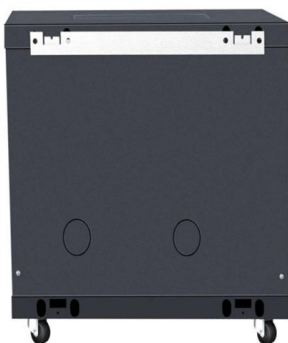
INSTALLATION GUIDE

We have more than a decade's worth of experience making and designing quality cable tray and cable management systems. Our knowledgeable production team works closely with each customer to



Top Installation Tips for Cable Trays by Blitz Systems:

This comprehensive guide by Blitz Systems provides top tips for installing cable trays, positioning Blitz as your trusted partner in cable



Cable Tray Systems , Cable Hanging Suspension

Cable Suspension for cable trays let you adjust the height of each suspension point in seconds



without tools, cutting hours out of installation time.



300mm Cable Tray Hanging & T-Joint Fixing in 60 Sec!#

Perfect for electricians & engineers. ? ? Tools Used: ? Like if this helped! ? Subscribe for more electrical tips! "300mm Cable Tray Hanging & T-Joint Fixing in 60 Sec!

Support methods

The tray is then attached to the bracket using either a bracket clamp (see page C35) in the case of the "L" bracket or integrated bend-down tabs for the TabLok bracket.



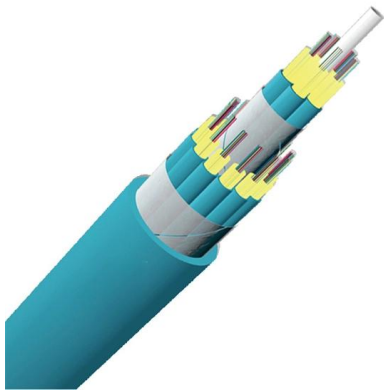
Cable Support Distances

Note 3: This regulation precludes, for example, the use of non-metallic cable clips or cable ties as the sole means of support where cables are clipped direct to exposed surfaces or suspended under



A Guide to Installing and Supporting Electrical Cable Trays

A professional guide to installing electrical cable tray systems per NEC Article 392. Covers support, securing cables, and fill calculations.



Electrical Cable Containment Suspension , Cable Tray

Installers can suspend trays or baskets from a single wire drop or use our rigid bracket systems where additional support is needed. Either way, you benefit from

Discover our new Wire Suspension Systems , CELO

A wire suspension system is a versatile mechanical setup that uses cables, anchors, and fittings to securely hang or support objects from ceilings or overhead



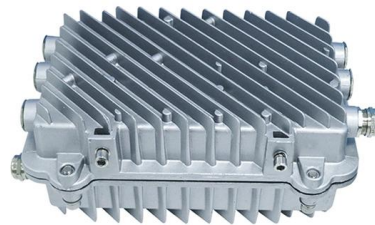
A Guide to Installing and Supporting Electrical Cable Trays

This guide covers the critical steps, from selecting the right electrical cable tray and performing accurate cable fill calculations to managing a safe cable pull through



Cable Tray Installation Method Statement

Below is the detailed cable tray installation method statement not only for cable tray but also applicable for GI ladder and trunking for indoor and outdoor applications

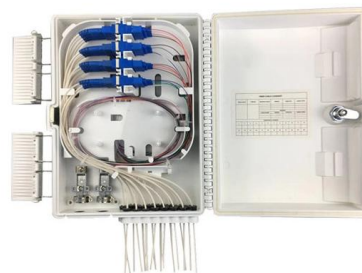


Cables Installed in Suspended Ceilings: Technical

Supporting of electrical cables Some of the requirements applicable to cables in suspended ceilings are embodied in Regulation Groups 522.6, 522.7

How to Install Cable Tray: A Comprehensive Guide to Different Cable

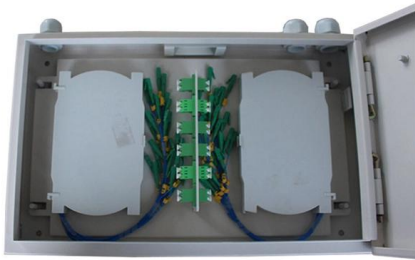
Welcome to our step-by-step guide on installing cable trays! In this video, we'll explore the different types of cable trays available and provide detailed instructions for their installation.





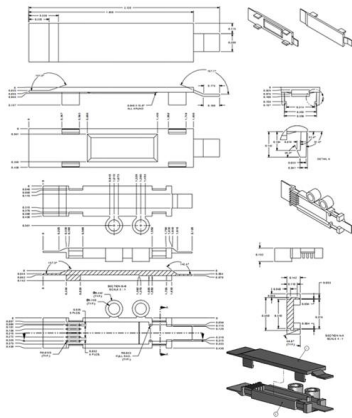
Efficient Cable Tray Installation Methods for Organized

Discover efficient methods for installing cable trays to organize power, data, and security cables. Explore wall, ceiling, and floor mounting options



Microsoft Word

Metallic cable trays shall be permitted to be used as equipment grounding conductors where continuous maintenance and supervision ensure that qualified persons service the installed cable tray system



Cable Tray Installation

Learn everything about cable tray installation with our complete guide. Discover types, steps, and safety tips for efficient electrical cable management.

Cable Tray and Trunking Installation Guide

This document provides a method statement for installing cable tray or trunking systems. It outlines the key steps, which include evaluating materials, properly



Best Practice Guide to Cable Ladder and Cable Tray Systems

This publication is intended as a practical guide for the proper and safe* installation of cable ladder systems, cable tray systems, channel support systems and associated supports.



Best Practices for Installing Cables in Trays

Quick Installation Checklist (Key Steps) Cable tray cable installation generally follows these steps: Inspect cables before installation Prepare and



300mm Cable Tray Hanging & T-Joint Fixing in 60 Sec!#

Learn the fastest way to hang & fix a 300mm cable tray T-joint! Perfect for electricians & engineers. ?? Tools Used: - Cable tray brackets - Bolts/Nuts





Discover our new Wire Suspension Systems , CELO

Suspended wiring system to install and suspend wires, cables, and pipes, and also to support false ceilings, cable trays, lighting, busbar trunking, and similar items.



Cable Tray Technical Guide A practical guide to product selection and

A practical guide to product selection and installation This guide for engineers and installers has been developed by ABB as a practical reference regarding cable tray characteristics, installation, and

Guide to cable support systems

Widths of 8 and 15 millimetres enable flexible adjustment to different cable trays, cable ladders and cable volumes. With the help of the matching SBV tightening strap locks and 576 spring chuck, the



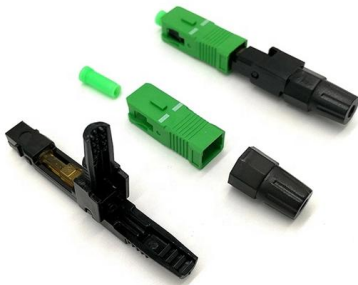
Decoding Cable Tray Support Structures: Tips and Insights

Discover efficient cable tray support structures for optimal cable management. Learn about hanger, wall-mounted, and Unistrut systems for safer



Best Practice Guide to Cable Ladder and Cable Tray Systems

This guide covers cable ladder systems, cable tray systems, channel support systems and associated supports intended for the support and accommodation of cables and possibly other electrical



Cable Support Distances

There are various ways of including strain relief sections, but the preferred method is to offset the cable by at least 2 cable diameters for each strain relief section.

Mastering Cable Tray Installation , Step-by-Step Guide for a Seamless

Learn how to install cable trays correctly. Get the ultimate step-by-step guide on setting up a seamless and reliable cable management system.





Contact Us

For datasheets, pricing, or custom telecom energy solutions, please visit:
<https://koskolong.co.za>