



**Adam Tas Corridor Energy**

# **Cable trays need to be assembled**





## Overview

---

18 (A) and (B), the cable tray system must be fully assembled before pulling conductors. en completely installed, without damage either to conductors or structural system use maintain spacing or to keep cables in place when the tray is ect the minimum bend ra-dius for cables as they exit the bottom of the cable tray. This is a description of how to select, install, and support these metal or plastic frames, on which electrical wires are installed. Whether you're building a commercial setup or upgrading an industrial plant, proper cable tray installation ensures neat wiring, safe access, and easy maintenance. Cable tray systems have become an essential component in the infrastructure of modern commercial buildings, smart offices, data centers, and various industrial facilities.



## Cable trays need to be assembled

---

### Cable Tray Installation Rules (NEC 392) - Electrical Trader



According to NEC 392.18 (A) and (B), the cable tray system must be fully assembled before pulling conductors. This step minimizes the risk of cable damage during the construction

### 100+ Essential Questions Answered About Cable Trays:

Discover over 100 expert answers about cable trays, covering key topics like material selection, load capacity, installation methods, and maintenance.



### FactSheet

FactSheet Electrical Safety Hazards of Overloading Cable Trays According to the 2005 National Electrical Code® (NEC), a cable tray system is " unit or assembly of units or sections and

### NEC Article 392 Guide: Ensuring Compliance for Cable

Master NEC Article 392 with our comprehensive guide. Learn essential cable tray requirements



for installation, grounding, and fill capacity to



## Best Practice Guide to Cable Ladder and Cable Tray Systems

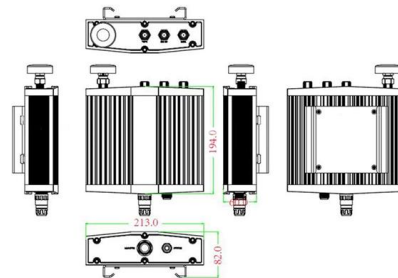
This guide covers cable ladder systems, cable tray systems, channel support systems and associated supports intended for the support and accommodation of cables and possibly other electrical



## Cable Tray Installation and Maintenance Considerations

Learn about effective Cable Tray Installation and Maintenance. Get practical tips for planning, fitting, and looking after your cable trays.

Mechanical drawing



## Cable tray

In the electrical wiring of buildings, a cable tray system is used to support insulated electrical cables used for power distribution, control, and communication. Cable



## Easy to Install Cable Tray Systems for High-Quality

A: Pre-assembled cable tray systems save time and labor on installation. One does not need to drill holes or fix parts together at the site since



## Complete cable tray manual for electrical engineers and

Cable trays simplify the wiring system design process and reduces the number of details. Cable tray wiring systems are well suited for computer aided design

## Cable Tray Systems: Requirements and Best Practices

This article explains the main requirements and good practices for cable tray systems, including tray types, materials, loading, supports, bonding, cable selection, and installation details.



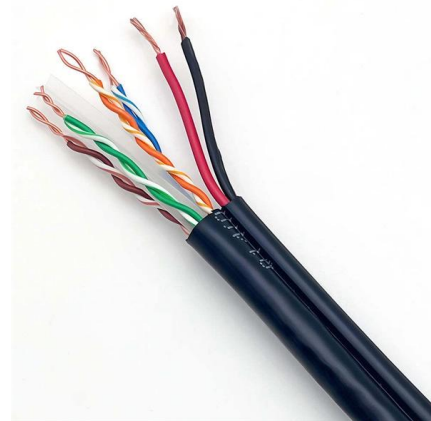
## Installation Of Cable In Cable Trays: NEC, Safety

Installation of Cable in Cable Trays ensures proper routing, cable management, NEC compliance, grounding, fire safety, and load capacity.



### **cable tray fabrication guide**

The purpose of this article is to define the sequence and methodology for the installation of electrical cable trays, cable trunking, cable raceways and boxes,



### **How To Use Cable Tray Architecture To Finish A Wall?**

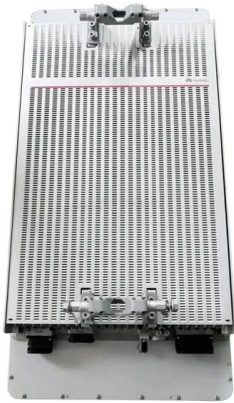
This guide provides step-by-step instructions on installing a cable tray on a wall, covering different types of cable trays, tools needed, and safety tips.



### **How to Install Cable Tray: A Comprehensive Guide to Different Cable**

Welcome to our step-by-step guide on installing cable trays! In this video, we'll explore the different types of cable trays available and provide detailed instructions for their installation.



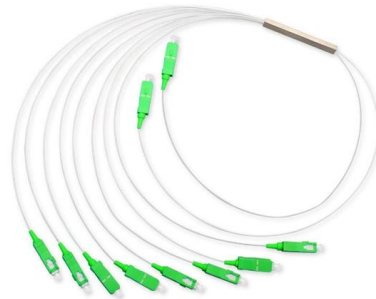


## Cable Tray Installation

Whether you're building a commercial setup or upgrading an industrial plant, proper cable tray installation ensures neat wiring, safe access, and easy maintenance. But before you lay the first tray

## DIY Installation: Mastering Light Duty Cable Tray Setup

Explore our comprehensive DIY guide to master the installation of light-duty cable trays. From planning to cable organization, follow step-by-step instructions for a tidy and efficient cable



## What are Cable Trays & Different Types of Cable Trays

For managing large cable networks, you need a reliable organizational system to ensure that the power supply stays operational. One of

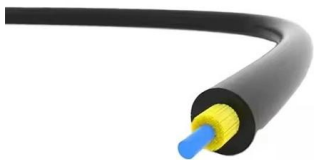
## Master Cable Tray Installation: A Professional Step-by

Learn how to install cable trays for large-scale projects with our professional, step-by-step guide covering industry standards, safety protocols,



## Understanding Cable Tray Grounding: A

Cable tray grounding is an indispensable aspect of electrical installations that plays a pivotal role in ensuring safety, reliability, and efficiency. It



## What Is Tray Cable? Everything You Need to Know

Knowing the fundamental characteristics of tray cable will help you understand your product options, and allow you to make better wire and cable choices.



## Cable Tray Installation

Cable Tray Installation - Complete Guide June 11, 2025 How about organizing your wiring with a cable tray system? Smart move. Whether you're building a commercial setup or upgrading an industrial



## Everything You Need to Know About Cable Trays , Cable Trays

Discover the different types of cable trays, their many benefits when used in electrical wiring and network cabling, installation processes, and essential maintenance tips for keeping your



## Best Practices for Installing Cables in Trays

Learn the best practices for installing cables in trays. This guide covers essential steps, technical requirements, and key details for efficient cable

## NEC Standards for Cable Trays: What Every Installer Needs to Know

Cable tray systems have become an essential component in the infrastructure of modern commercial buildings, smart offices, data centers, and various industrial facilities. These systems



## Tray-Rated Cable 101

Unlike standard tray-rated cables, exposed-run tray-rated cables can be installed in applications where the cable will drop from tray to tray or from tray to equipment, like a motor. These cables can be

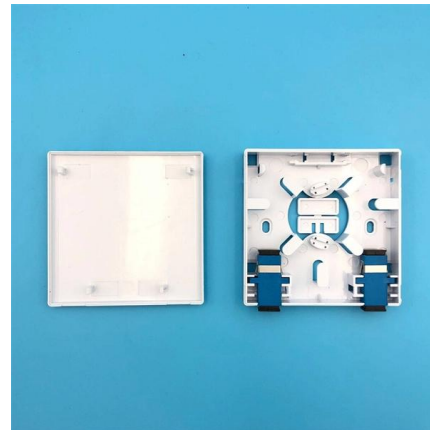


Length:14.5mm  
Small-end inner diameter:2.0mm  
Large-end inner diameter:3.5mm  
Outer diameter:5.2mm



## Cable Tray Technical Guide A practical guide to product selection and

Cable Tray Technical Guide A practical guide to product selection and installation This guide for engineers and installers has been developed by ABB as a practical reference regarding cable tray



## Cable Tray Technical Guide A practical guide to product selection and

Cable tray is considered to be a system. It must provide continuous support for cables, and the electrical continuity of the cable tray system must be maintained.



## Contact Us

---

For datasheets, pricing, or custom telecom energy solutions, please visit:  
<https://koskolong.co.za>