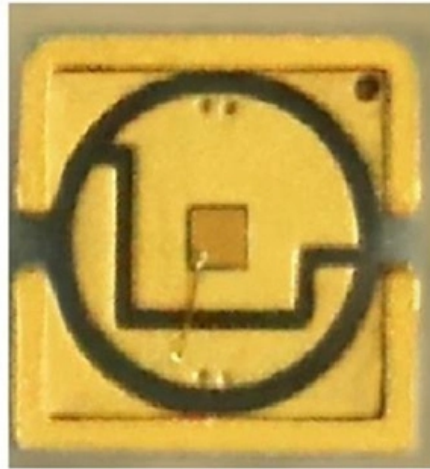




Adam Tas Corridor Energy

Cable trays need to be re-inspected





Overview

A comprehensive inspection is generally recommended at least annually, or a specialized inspection after upgrades to critical equipment or systems. In harsh environments, such as those with humidity, high temperatures, or corrosive gases, more frequent inspections may be. Cable trays play a crucial role in ensuring the safety and efficiency of electrical and communication systems. With their responsibility to manage cables effectively, their inspection is essential to maintaining stable performance and meeting design standards.



Cable trays need to be re-inspected

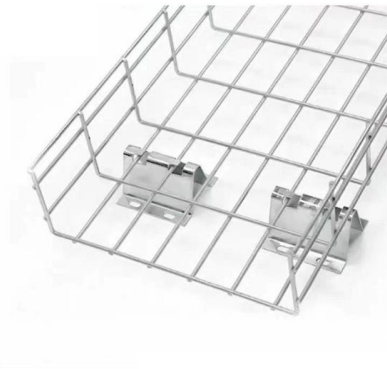
How to Check if Your Cable Trays are Grounded and Safe



Learn how to verify the safety of your electrical systems with our guide on testing cable tray grounding, ensuring full compliance and effective

How to Fix Common Cable Management Issues using

Discover common cable management problems and how cable tray accessories effectively solve them to ensure safety and performance.



Inspection of Cable Trays, Installation Instructions Of Cable Tray

When trays, ladders & channel supports have been subjected to unusual weather patterns or any other abnormalities, it is recommended that an inspection is carried out and any remedial activity undertaken.

Cable Tray Inspection Checklist Report , PDF , Wire

The document is a field inspection report for the installation of cable trays, conduits, and trunking.



It includes checklists to inspect items like cable tray sizing and



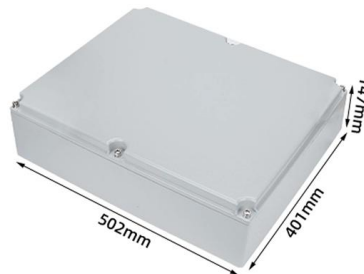
Beama Best Practice Guide , Maintenance Of Cable Trays , CMW

Cable trays, ladders & channel under normal conditions are virtually maintenance free. However, under a facility's routine maintenance schedule for electrical equipment there may be a requirement to



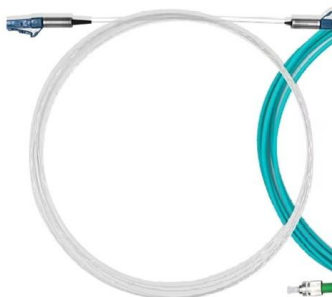
Cable tray accessories need to be inspected regularly.

Inspect the protective layers of the cable trays and their accessories, such as galvanization and coatings, for integrity to prevent corrosion and damage. Use visual inspection to observe the



Cable Tray Installation and Maintenance Considerations

Learn about effective Cable Tray Installation and Maintenance. Get practical tips for planning, fitting, and looking after your cable trays.





Cable Tray Technical Guide A practical guide to product selection and

A practical guide to product selection and installation This guide for engineers and installers has been developed by ABB as a practical reference regarding cable tray characteristics, installation, and



Common Cable Tray Failures and How to Resolve Them

Learn about common cable tray failures, their causes, and practical solutions for ensuring the longevity and safety of your cable tray system, including



Compliance Requirements for Instrument Cable Trays

Installing instrument cable trays properly and in compliance with relevant standards is crucial to ensure safety, functionality, and durability. Below is a detailed guide



Inspection of Cable Tray Earthing and Continuity Test Points

By engaging in regular inspections of cable tray earthing and continuity test points, organizations can ensure electrical safety, reduce downtime, and minimize the risk of non-compliance.



Cable Tray Systems: Requirements and Best Practices

Comprehensive guide to cable tray systems requirements: tray types, materials, loading, supports, bonding, routing, and best practices for safe electrical cable management.

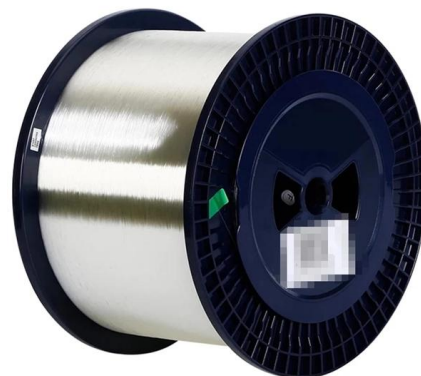


5 Golden Rules for Safe & Compliant Cable Tray Installation

Ensure safety and compliance in your cable tray installation. Discover the 5 golden rules covering NEC standards, load capacity, grounding, and support spacing.

Inspection of Cable Tray Support Structures and Fixings

Cable tray support structures and fixings are a critical component of electrical systems and installations, playing a vital role in maintaining the integrity and safety of these systems. The inspection of these





Daily Inspection for Cable Tray: Your Easy Guide to Safety Ops

Worried about your electrical system? Learn how simple Daily Inspection for Cable Tray can keep your setup safe and running without a hitch.

Beama Best Practice Guide , Maintenance Of Cable Trays , CMW

5.1 Inspection Cable trays, ladders & channel under normal conditions are virtually maintenance free. However, under a facility's routine maintenance schedule for electrical equipment there may be a



Check Cable Tray: Essential Post-Install Guide & Tips

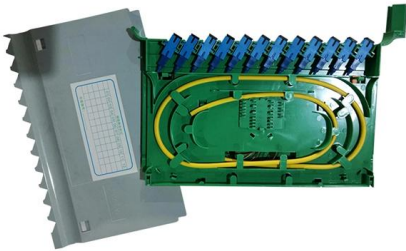
Learn how to check cable tray installations after maintenance or replacement. Our simple guide covers visual checks, safety, and why it matters.



Instrumentation Cable Tray Installation Checklist and

Step-by-step instrumentation cable tray installation guide with safety tips, standards, inspections, and downloadable Excel checklist.





Grounding Inspection of Steel and Aluminum Cable Tray Systems

Steel and aluminum cable tray systems are excellent equipment grounding conductors if they are properly designed, specified, installed, and inspected. The NEC requirements for cable tray

Technical Guidelines for Cable Tray Installation and

Shortest and Straightest Path: To reduce cable loss and simplify maintenance, cable routes should be as short and straight as possible.
Segregation of Power and

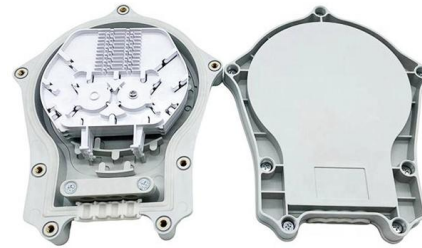


Essential Cable Tray Standards: Your Guide to Compliance & Safety

Understanding and implementing essential cable tray standards is a critical aspect of electrical safety and compliance. By prioritizing these regulations in your design and installation processes, you not

GUIDE CABLE TRAYS TECHNICAL

In accordance with its continuous improvement policy, Legrand reserves the right to change the specifications and illustrations without notice. All illustrations, descriptions and technical information

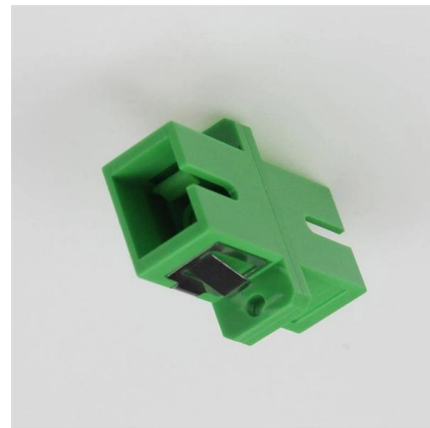


What Tests Should Cable Trays Go Through? How to

Why do we need to conduct strict testing on cable trays? When the whole project is completed, and the cable tray is delivered, if there is a problem

Best Practices for Installing Cables in Trays

Learn the best practices for installing cables in trays. This guide covers essential steps, technical requirements, and key details



Inspection Methods for Cable Trays: A Comprehensive

In this detailed guide, we'll explore the essential inspection methods



Electrical Cable Inspection Procedure

Learn a complete electrical cable inspection technique for safety, dependability, and compliance. From visual and physical inspections to electrical



Cable Tray SHIB NAL

Cables in trays can be easy to mark, find, and remove. Their flexibility makes cable trays a good choice for installation situations that require upgrading, reconfiguring, or relocation.

QA/QC Inspection Checklist for Cable Trays Ladders etc

QA/QC Inspection Checklist for Cable Trays Ladders etc by HSE DOCUMENTS on September 16, 2020 in Downloads



Contact Us

For datasheets, pricing, or custom telecom energy solutions, please visit:
<https://koskolong.co.za>