



Adam Tas Corridor Energy

Cables are fixed in cable trays using devices





Overview

The cable support lengths and fittings can basically be designed as cable trays, cable ladders or mesh cable trays, in which cables are routed. When developing our cable support OBO can offer reliable solutions for systems, three attributes are at the routing and fastening cables securely core of what we do: efficiency, resilience and safety. For each of these installation challenges, maintain spacing or to keep cables in place when the tray is subjected to the minimum bend radius for cables as they exit the bottom of the cable tray. A rung spacing of 6 to 9 inches (150 to 230 mm) is preferable when the cable tray is used for instrumentation and control applications that require. The most frequently used tray cables are: Type TC - Tray Cable - (NEC Article 336) - Power and control tray cable type TC is a factory assembly of two or more insulated conductors, with or without associated bare or covered grounding conductors, under a non-metallic jacket. Cable trays come in several configurations that balance cable protection with ventilation and accessibility needs. This design maximizes air circulation, which helps manage heat dissipation from high-power.



Cables are fixed in cable trays using devices



What Are Cable Trays and How Do They Work?

Essential Roles in Infrastructure Cable trays are deployed in large-scale settings where a high volume of cables must be managed efficiently over long distances. They are common in industrial environments

Cable Tray Technical Guide A practical guide to product selection and

Cable tray is considered to be a system. It must provide continuous support for cables, and the electrical continuity of the cable tray system must be maintained.



Types of Cable Trays - Purpose, Advantages,

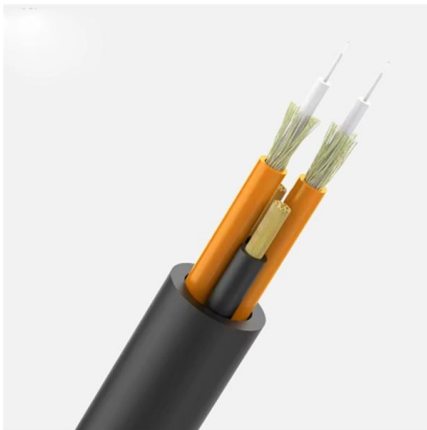
Cable tray is alternatives to wire ways and electrical conduits, which completely enclose cables. Study types of cable trays, purpose, advantages.

Cable Tray Technical Guide A practical guide to product selection and

SOLID-BOTTOM CABLE TRAY Providing additional



cable protection, solid-bottom cable tray is sometimes preferred to support and protect numerous small instrumentation and control cables.



FactSheet

Cable trays feature flexibility unmatched by conduit, as cables are easier to mark, remove and find in cable trays. Cable trays are available in a number of different configurations, including ladder,

What Are Cable Trays and How Do They Work?

In modern data centers, cable trays manage the sheer volume of power and data wiring required to connect thousands of servers and network devices. They serve as a practical alternative to pulling



How to Manage Cables in Cable Trays: Principles and Methods

Learn how to manage cables in cable trays effectively with our comprehensive guide for cable classification, protection, and installation to ensure electrical system safety and efficiency.



Connecting Cable Trays: Your Guide to Secure and

Learn common methods for connecting cable trays safely and efficiently. Our guide covers splice plates, quick-connects, and key tips for secure

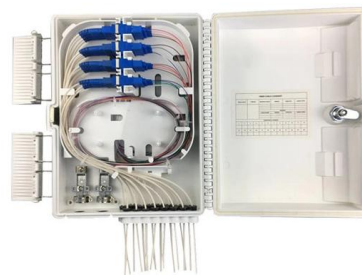


CABLE

Cable ladder is more commonly used where heavier cables need to be carried, but is more expensive. Apart from the choice between solid or perforated cable tray and wire basket, as Rendell

Efficient Cable Tray Installation Methods for Organized

Discover efficient methods for installing cable trays to organize power, data, and security cables. Explore wall, ceiling, and floor mounting options



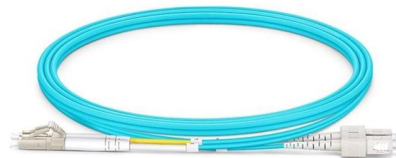
Cable Trays and Their Uses: Definition, Types, and

Learn about cable trays for desks, accessories, and how they compare with raceways, conduits, and trunking for efficient cable management.



Cable Tray Systems: Requirements and Best Practices

This article explains the main requirements and good practices for cable tray systems, including tray types, materials, loading, supports, bonding, cable selection, and installation details.



Cable trays are structural components of a facility's electrical system

All cables and conductors approved for use in cable trays are required to be insulated. However, while the insulation of the conductors does provide some protection, it is important to use measures to

Cable Tray SHIB NAL

Cable trays are not raceways, but they are treated as a structural component of a facility's electrical system. Cable trays are a part of a planned cable management system to support, route, protect and





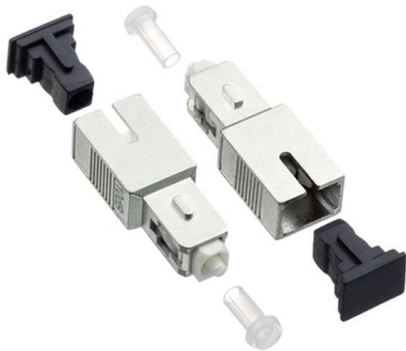
Best Practices for Installing Cables in Trays

Quick Installation Checklist (Key Steps) Cable tray cable installation generally follows these steps: Inspect cables before



What is Cable Tray and How it is used in Industrial

What is Cable Tray? In electrical cabling, a cable tray is a metallic structure used to handle insulated electrical power distribution, control, and

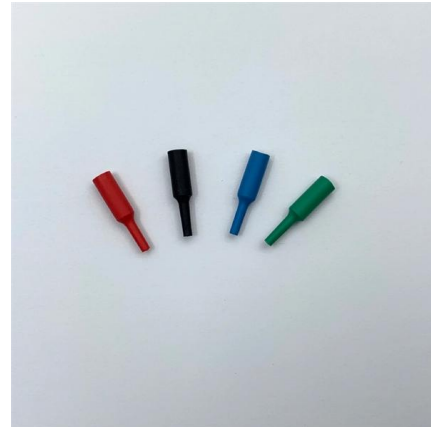


Types of Cable Typically Used in Cable Tray

In all instances cables utilized within a cable tray system should be UL listed and marked as cable tray rated. The types of cables, allowed in cable trays, and the

Cable Trays , How it works, Application & Advantages

Channel Cable Trays: Channel trays are the simplest form of cable trays - a single channel through which cables run. They're often used for



Best practice guide to cable ladder and cable tray

Cable ladder and cable tray systems The following recommendations are intended to be a practical guide to ensure the safe and proper installation of



Decoding Cable Tray Support Structures: Tips and Insights

Discover efficient cable tray support structures for optimal cable management. Learn about hanger, wall-mounted, and Unistrut systems for safer



Guide to cable support systems

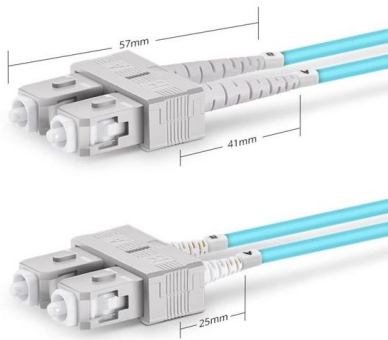
The mesh cable trays are suitable for the installation of power cables and cables in various areas of application. The grid spacings mean that cables can be inserted and run out in various directions.





Cable tray

To maintain support of cables at changes of elevation or direction of a tray, a large number of specialized cable tray fittings are made compatible with each style and



Duplex SC UPC



Everything You Need to Know About Cable Trays , Cable Trays

Discover the different types of cable trays, their many benefits when used in electrical wiring and network cabling, installation processes, and essential maintenance tips for keeping your

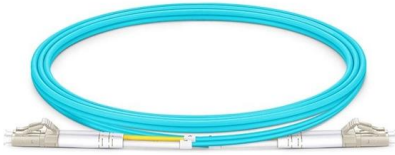
Types of Cable Trays: Ladder, Perforated, Basket, Solid

Cable trays support insulated electrical cables in industrial and commercial settings. There are several types of cable trays, including ladder,



Best Fixing and Mounting Options for Cable Trays , CMW

Regarding cable management, the fixing and mounting you choose for your cable trays can make or break your setup. Whether you're managing voice, data, or electrical cables, ensuring



Contact Us

For datasheets, pricing, or custom telecom energy solutions, please visit:
<https://koskolong.co.za>