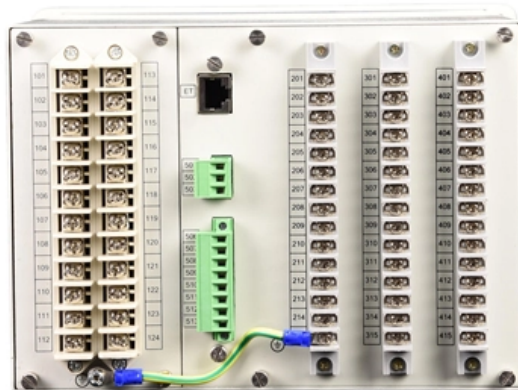




Adam Tas Corridor Energy

Cables are laid 20 meters high on a high-altitude cable tray





Cables are laid 20 meters high on a high-altitude cable tray



Best Practice Guide to Cable Ladder and Cable Tray Systems

This publication is intended as a practical guide for the proper and safe* installation of cable ladder systems, cable tray systems, channel support systems and associated supports.

IEC Standard for Cable Derating Factors - Complete

Learn the IEC standard for cable derating factors with clear tables and examples. Understand how temperature, installation, and grouping affect cable



ITER Cabling Handbook

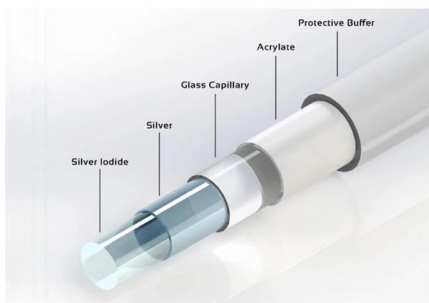
The cable tray walls must be higher than the external diameter of the cable or group of cables installed in it, respecting EMC 2014/30/UE. However, 50 mm height shall be the minimum required.

Underground Cable Laying All You Need to Know

Underground cable laying has additional advantages, such as lower transmission loss and



a lower risk of service interruption in severe weather. Learn



6.2: Cables

6.9 A cable subjected to a uniform load of 300 N/m is suspended between two supports at the same level 20 m apart, as shown in Figure P6.9. If

POWER CABLE INSTALLATION GUIDE

POWER CABLE INSTALLATION GUIDE Cables installed into conduits or trays have installation parameters such as maximum pulling tensions, sidewall pressure, clearance, and jamming, which



Best Practices for Cable Laying by EVIO

By following these structured steps, one can ensure that cable laying process is smooth, efficient, and compliant with industry standards. Properly laid



IS 1255 Cable Laying Standards , PDF

Is 1255 - Cable Laying Specs - Free download as PDF File (.pdf), Text File (.txt) or read online for free. This document provides an abstract of key points from IS



General method for cable sizing

The current-carrying capacities of cables in the ground are based on an ambient ground temperature equal to 20 °C. For other temperatures, the correction factor is given in Figure G13 for

Calculation of Altitude Correction

The following calculator computes the altitude correction factor and resulting sea-level impulse withstand and power frequency withstand voltage requirements for electrical equipment being applied at



Session 13 - Wiring Methods & Cable Standards

Cables shall be laid on racks or trays strictly in accordance with the laying patterns stated on the layout drawings. Metal parts of the cable racks and trays shall be bonded and connected to the common



Simulated-high-altitude testing of aircraft ignition cables and

PROGRESS in flying to ever increasing altitudes has brought with it a host of problems of which none have been more urgent than those involving the distribution of magneto energy to the aircraft spark

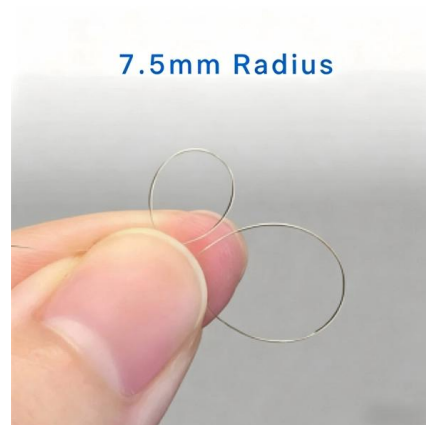


Types of Cable Trays: Ladder, Perforated, Basket, Solid

Explore all types of cable trays--ladder, perforated, basket, solid, and channel. Learn their uses, materials, pros, cons, and key differences.

IS 1255 (1983): Code of practice for installation and maintenance of

8.8.1 The spacing between three cables laid in one plane should be not less than the cable diameter. When the cables are arranged in a duct or on a rack in this way, each one should be secured either





The impact of altitude on electrical equipment:

CLOU explores the effects of altitude on electrical equipment and components that are susceptible to failure in high-altitude environments.



Supplier of power cables, cable tray & cable raceway in

PowerTel & his associated factories can provide you a wide of range of low, medium. high voltage power cable, and its cable tray & raceway, including

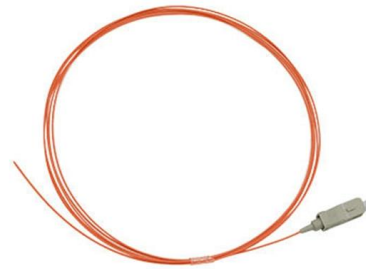
AshwinD24's gists · GitHub

GitHub Gist: star and fork AshwinD24's gists by creating an account on GitHub.



Tray and Ladder Sizing by Cable Capacity Calculator - IEC

Calculate tray and ladder sizes by cable capacity with our IEC-compliant calculator for efficient and accurate electrical installations.



Cable Tray Capacity Calculator

This calculator determines the maximum number of cables that can be safely housed within a cable tray based on its dimensions and the cross-sectional



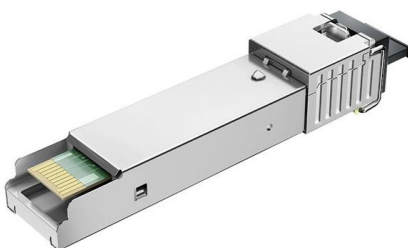
Student-Professor Duo Solves "Hanging Cable" Problem

Posted in: Faculty and Student Research The "Hanging Cable" Problem Work done by mathematics student Neil Chatterjee and Mathematics



Current Carrying Capacity Calculations for High

This document discusses the calculations for current carrying capacity of high- and medium-voltage cables in various conditions.





High Altitude Cable Bridge

Among several types, cable-stayed bridges are most popular type for its long spans & for its economical structures, because they can be continued for longer spans up to 3000 meters. This work involves



Twelve high voltage cable construction techniques used

This technical article discusses twelve different methods for laying high voltage cables. Out of the ten, four are deemed conventional and

High-Altitude Considerations for Electrical Power Systems and

Failure to understand adequately and include the effects of high altitude in the design and application of the equipment may result in its poor performance, premature aging, and/or failure. The relationship of



Submarine communications cable

The first submarine communications cables were laid beginning in the 1850s and carried telegraphy traffic, establishing the first instant telecommunications links



Derating Factors of Cables: How to Calculate Safe

Discover how IEC derating factors--temperature, soil, depth, and grouping--impact cable ampacity for safe, reliable electrical design.



(PDF) Cable Laying and Pulling

PDF , The common methods of cable laying are:
o Direct in the ground in trenches (underground cables).
o In cable trenches in outdoors switchyards.
o

Guide to cable support systems

A cable support system consists of cable support lengths and system components, such as cable support fittings, support elements, mounting elements and system accessories. The cable support





Contact Us

For datasheets, pricing, or custom telecom energy solutions, please visit:
<https://koskolong.co.za>