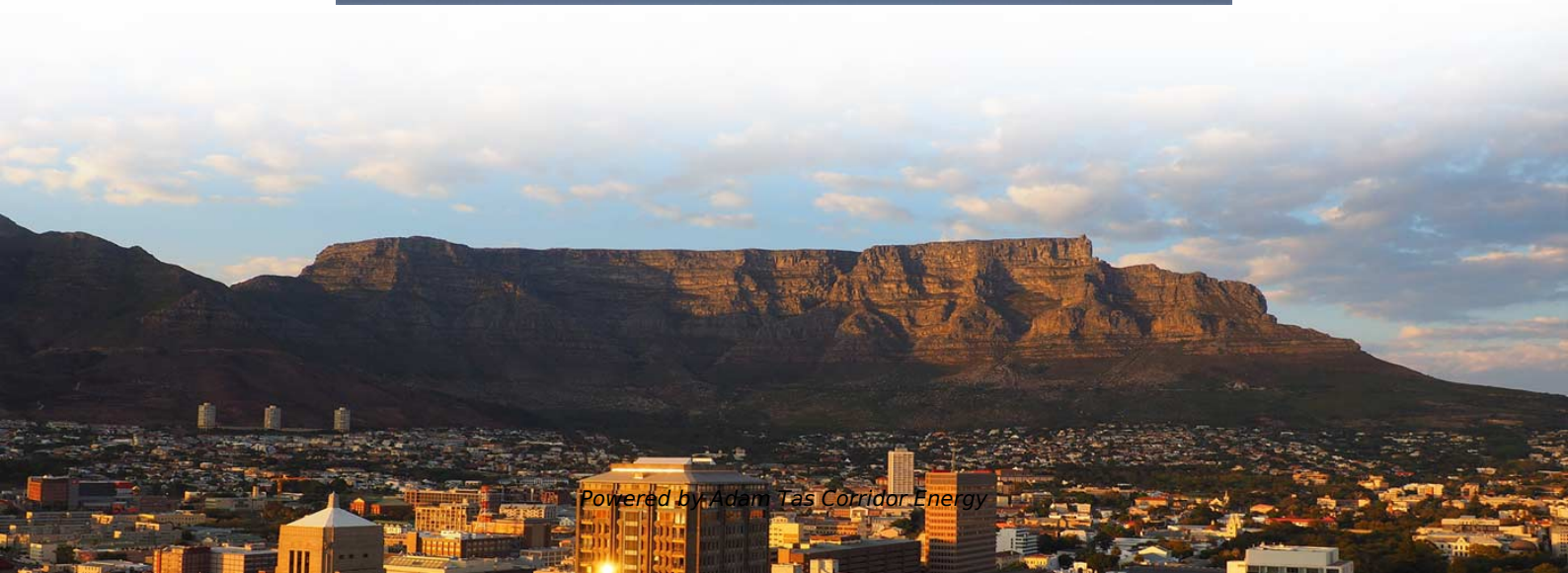
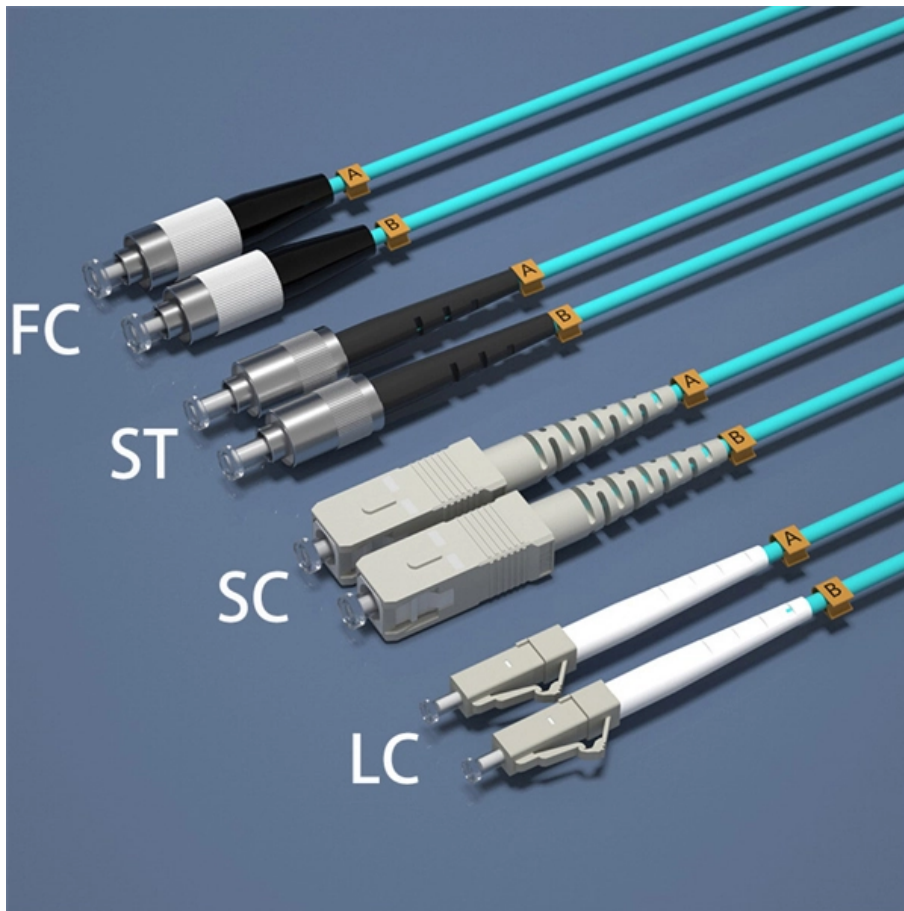




**Adam Tas Corridor Energy**

# **Cables concealed through cable trays**





## Overview

---

A cable tray is an organized support structure designed to secure and route these insulated electrical cables. It acts as a dedicated pathway for power distribution and data transmission, often supporting cables hidden behind walls or above ceilings. Designed to support large bundles of electrical or data cables, trays offer an open and accessible structure that simplifies both installation and ongoing maintenance. The most frequently used tray cables are: Type TC - Tray Cable - (NEC Article 336) -Power and control tray cable type TC is a factory assembly of two or more insulated conductors, with or without associated bare or covered grounding conductors, under a non-metallic jacket.



## Cables concealed through cable trays

---



### **Cable Containment / Basic Components / Electrical / Trades**

Learn about cable containment systems, including cable trays, conduits, and trunking. Understand their importance in safely organizing and protecting electrical cables in various industrial and commercial

### **Ampacity of Power Cables Installed in Cable Trays**

Cable ampacity, the maximum current-carrying capacity, is a critical factor in the design and operation of power cable systems. Cables installed in trays have



### **Types of Cable Trays - Advantages, Applications and Sizes**

Explore the types of cable trays, their advantages, applications, and standard sizes. Learn how they improve cable management and support various industries.

### **Cable Tray Questions , Cable Tray Institute**

Answer: No. Cable trays are a support system for electrical cables, power, signal, and



communication and optical fiber cables. NEC section 300-8 does not permit any tube, pipe, or equal for water, air



### Types of Cable Typically Used in Cable Tray

TC cables are rated for 600 volts and can be used in industrial power or control circuits, where flame retardant cables are desired. Allowed installations include



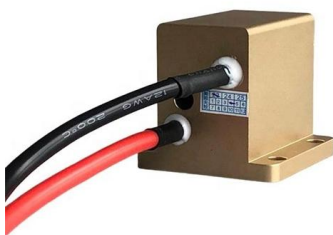
### Cable tray

Cable trays can be used in commercial and industrial buildings Firestopped cable tray penetration with teck cables Fire test in Sweden, showing rapid fire spread



### What Is A Cable Tray? 5 Types Of Cable Trays

This article will explore the different types of cable trays, the materials used, and their benefits in a wide range of applications. Understanding these elements is key to optimizing both the performance and





## Types of Cable Containment Systems: Trays, Trunks,

Discover the main types of cable containment systems--trays, trunking, and conduits--and learn how to choose the right solution for safe,



50KW modular power converter

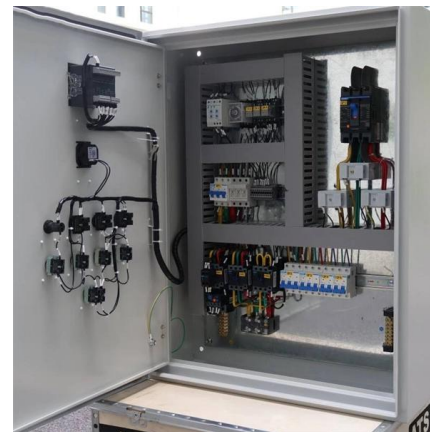


## Cable Tray Systems , Efficient Cable Management

Cable tray systems provide a structured and efficient solution for routing and supporting electrical and data cables in commercial and industrial environments.

## Cable Tray Types and Sizes

Explore various cable tray types and sizes for electrical installations. Learn about ladder, perforated, solid-bottom, wire mesh, and channel



## 7 Types of Cable Trays: How to Choose the Right One

A channel cable tray is a compact, single-piece tray system with a narrow base and raised side flanges. Unlike ladder or trough trays, channel trays



## Types of Cable Trays: Ladder, Perforated, Basket, Solid

Cable trays support insulated electrical cables in industrial and commercial settings. There are several types of cable trays, including ladder,



## Cable tray vs cable basket vs cable ladder vs cable

This article will discuss the four most common types of cable containment and their uses: cable tray, cable basket, cable ladder, and cable



## Types of Cable Trays - Purpose, Advantages,

Cable tray is alternatives to wire ways and electrical conduits, which completely enclose cables. Study types of cable trays, purpose, advantages.





## Cable Tray Systems: A Complete Guide to Types

Discover the essential guide to cable tray systems. Learn about ladder, trough, and wire mesh types, key components, and expert installation tips

## Best Practices for Installing Cables in Trays

Learn the best practices for installing cables in trays. This guide covers essential steps, technical requirements, and key details

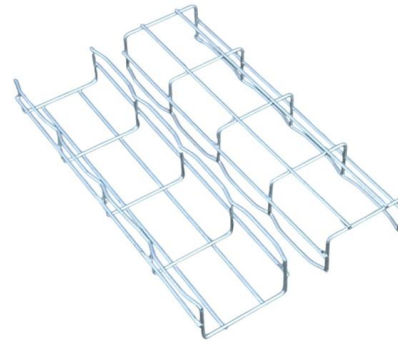


## FactSheet

Cable trays feature flexibility unmatched by conduit, as cables are easier to mark, remove and find in cable trays. Cable trays are available in a number of different configurations, including ladder,

## Concealing Cables For A Wall Mounted TV Installation

Utilise cupboards and wardrobes to run cables through discreetly. Depending on the property, there are ways to be inventive with your install. Make full use of any existing spaces you



## Cable Tray Technical Guide A practical guide to product selection and

**SOLID-BOTTOM CABLE TRAY** Providing additional cable protection, solid-bottom cable tray is sometimes preferred to support and protect numerous small instrumentation and control cables.



## Do Tray Cables Need to Be in Conduit? A Complete Guide

When planning a modern electrical system for industry, utilities or commercial spaces, the question "Do tray cables need to be in conduit?" naturally comes up. This is a crucial



## Types of Cable Typically Used in Cable Tray

**Types of Cable Typically Used in Cable Tray** The purpose of a cable tray system is to support, route, and protect cable as part of the cable management system.





## Snake Canyon: The Cabling Solution for Buildings with

Rather than simply laying cables on the bare floor, Snake Tray has revolutionized the concept of cable management under raised access floors with



## Horizontal & Vertical Cable Managers

Organize network infrastructure with CommScope Horizontal and Vertical Cable Management Kits. Sturdy aluminum structures, troughs, spools, and trays keep cables secure and concealed.

## What Are Cable Trays and How Do They Work?

A cable tray is an organized support structure designed to secure and route these insulated electrical cables. It acts as a dedicated pathway for power distribution and data transmission, often supporting



## Comprehensive Guide to Cable Channels for Electrical

Discover the importance of cable channels for electrical wiring. Learn about their types, materials, and uses in homes, offices, and industries for safety,



### **Concealed cable tray , Information by Electrical Professionals for**

Cable trays shall be permitted to extend transversely through partitions and walls or vertically through platforms and floors in wet or dry locations where the installations, complete with



### **Cable Tray Systems: Requirements and Best Practices**

Comprehensive guide to cable tray systems requirements: tray types, materials, loading, supports, bonding, routing, and best practices for safe electrical cable management.

### **How to Install Cable Tray: A Comprehensive Guide to Different Cable**

Welcome to our step-by-step guide on installing cable trays! In this video, we'll explore the different types of cable trays available and provide detailed instructions for their installation.





## **Cable Tray Technical Guide A practical guide to product selection and**

Cable tray installed in a hazardous location must contain only those cables that are appropriate for this type of environment as defined in Chapter 5 of the NEC.

## **Contact Us**

---

For datasheets, pricing, or custom telecom energy solutions, please visit:  
<https://koskolong.co.za>