



Adam Tas Corridor Energy

Calculation Methods for Low Voltage Network Lines and Cable Trays





Calculation Methods for Low Voltage Network Lines and Cable Trays

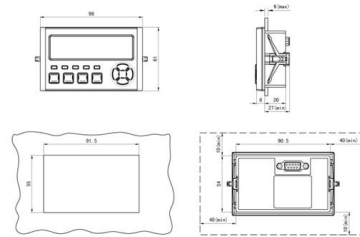


Typical Design Philosophy of Cable Trays for Power

Resources For Electrical & Electronic Engineers
Typical Design Philosophy of Cable Trays for Power Plant Cable tray system shall be used for laying of MV and LV

Tray and Ladder Sizing by Cable Capacity Calculator - IEC

Calculate tray and ladder sizes by cable capacity with our IEC-compliant calculator for efficient and accurate electrical installations.



B-Line series Cable Tray Design Considerations

As an industry leader in cable tray, Eaton offers one of the widest ranges of cable management solutions available in the market today with its B-Line series portfolio. With unmatched quality and service, we

A Guide to Installing and Supporting Electrical Cable Trays

This guide covers the critical steps, from selecting the right electrical cable tray and



performing accurate cable fill calculations to managing a safe cable pull through



Calculation of ampacities for cables in trays using finite elements

Cable trays are becoming increasing popular in industrial power systems because of their low installed cost, system flexibility, accessibility for repair or addition of cables, and space saving

Cable Tray Raceway Fill and Load Calculations

Resources For Electrical & Electronic Engineers
Cable Tray Raceway Fill and Load Calculations
Cable tray / raceway is integral part of any cable management



Cable Tray Raceway Fill and Load Calculations

The the following sections of this page tables and formulas are provided to help determine how many cables can be safely carried by each size wire mesh / cable





Cable Tray Sizing and Calculation Guide , PDF , Wire , Diameter

It details different types of cable trays, such as ladder, perforated, solid bottom, wire mesh, and channel trays, along with guidelines for selecting the appropriate size based on cable diameter and quantity.

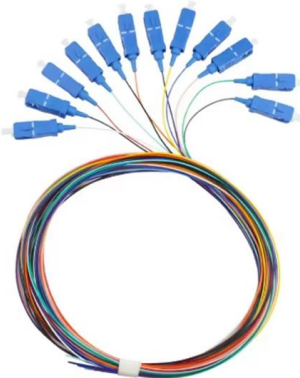


Best Practice Guide to Cable Ladder and Cable Tray Systems

This guide covers cable ladder systems, cable tray systems, channel support systems and associated supports intended for the support and accommodation of cables and possibly other electrical

IEC 60502 Std , Cable Capacity Software , Cable

ETAP IEC 60502 Medium Voltage Cable Sizing offers a comprehensive and integrated software for conducting cable current carrying capacity, voltage drop,



2005

Typical 300 volt insulated multiconductor instrumentation tray cables (ITC) and power limited tray cables (PLTC) cost the same for both cable tray and conduit wiring systems.



Cable Tray Technical Guide A practical guide to product selection and

A practical guide to product selection and installation This guide for engineers and installers has been developed by ABB as a practical reference regarding cable tray characteristics, installation, and



Cable Tray Sizing Calculation Guide

The document outlines the steps for cable tray and conduit sizing according to NEC and IEC standards, including input data for low and medium voltage cables. It emphasizes the need to follow specific



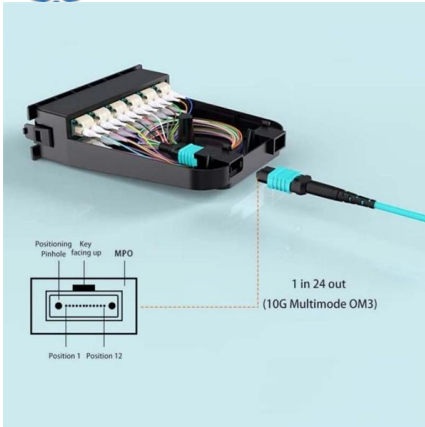
Instrument Location Layout and cable routing layout -

The National Electrical Code (NEC), specifically Article 392 (Cable Trays), provides strict rules on cable fill area, maximum cable sizes, and acceptable loading



Cable Installation Guidelines in Trays

The document provides guidelines for installing cable in cable trays, including design considerations and formulas for calculating maximum tensions, sidewall



A Guide to Installing and Supporting Electrical Cable Trays

A professional guide to installing electrical cable tray systems per NEC Article 392. Covers support, securing cables, and fill calculations.



GUIDE CABLE TRAYS TECHNICAL

Practical guide UTE C 15-900: "Low voltage electrical installations - Erection and coexistence of power and communication networks in residential, tertiary and analog buildings." Practical guide UTE C 15

How to calculate LT Cable Size and Voltage drop in

Cable size and Voltage drop calculation for LT / LV (Low tension/Low voltage) Purpose The purpose of this document is lay to down the guidelines





Chapter 14 Cable Support systems

Calculations for loading of cable into tray is based upon manufacturers cable data compared to loading data for tray manufacturer. It is not uncommon to use either the cable tray or ladder to be used as a

Cable Tray Sizing and Calculation Guide , PDF , Wire , Diameter

The document provides an overview of cable trays, which are designed to organize electrical wires and prevent tangling. It details different types of cable trays, such as ladder, perforated, solid bottom, wire



Hermi CableTray Calculator , Experts for protection from

The Hermi CableTray Calculator application allows the planning and calculation of cable tray paths based on the length of the cable route and the intended electrical

Installation Of Cable In Cable Trays: NEC, Safety

Installation of Cable in Cable Trays ensures proper routing, cable management, NEC compliance, grounding, fire safety, and load capacity.



Complete cable tray manual for electrical engineers and

Complete cable tray manual for electrical engineers and designers (on photo: power cable management ladder tray systems assembled aluminum cable tray ladder



Cable Tray Sizing Calculator , IEC 61537 & NEC 392 Guide

Use this cable tray sizing calculator to check fill %, select tray size, and comply with IEC 61537 & NEC 392 with formulas, example and checklist.



Thermal Analysis of Power Cables Installed in Solid Bottom Trays

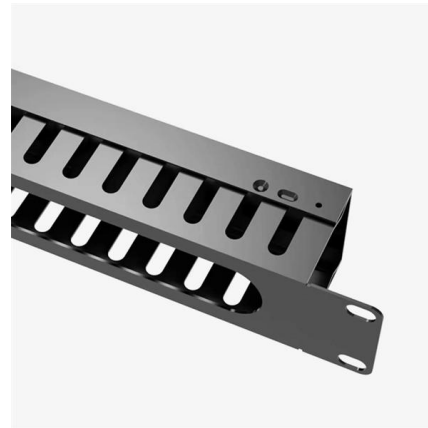
However, there are neither standards nor explicit industry guidelines on ampacity calculations for cables installed in solid bottom trays. The pioneering work by Stolpe introduced a simple method for





IEEE 525-2007_accepted

Initially three commonly accepted "cable performance" levels were established for communications cable: 1) POTS (plain old telephone service); 2) low speed computer network applications; and 3)



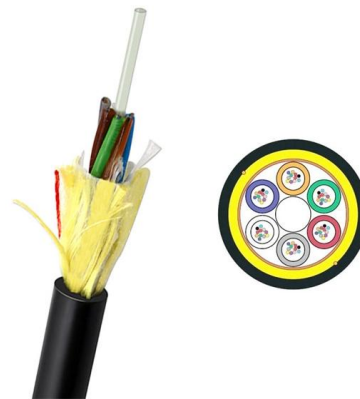
IEEE 525-2007_accepted

IEEE Std 575, IEEE Guide for the Application of Sheath-Bonding Methods for Single-Conductor Cables and the Calculation of Induced Voltages and Currents in Cable Sheaths.3, 4



Cable Tray Size Calculation Guide

This document contains calculations to determine the appropriate size of cable trays between an LV room and electrical room based on the cables being used. It lists



ITER Cabling Handbook

By convention, to avoid any misunderstanding and to simplify the cable tray design and installation, the bending radius for all cable trays and conduits should be at least 300 mm for Low Voltage, Sensitive



Contact Us

For datasheets, pricing, or custom telecom energy solutions, please visit:
<https://koskolong.co.za>