



**Adam Tas Corridor Energy**

# **Campus Network Computer Room Hotspot Remote Monitoring Type**



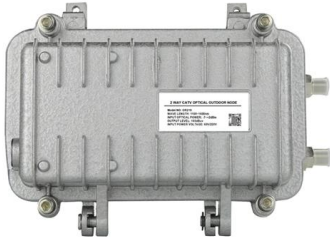


## Campus Network Computer Room Hotspot Remote Monitoring Type

---

### Design and Implementation of Network Monitoring

Monitoring a complex system such as a campus network requires mechanisms that efficiently verify the status of users and services on the network. For this



### What are campus networks? , NTT DATA

A campus network, also known as a corporate area network, is a digital network that links buildings and infrastructure within a specific geographic



### How To Manage Computer Room Temperatures Over A

An alternative, that can help to reduce energy usage is to use a smart power strip and computer room temperature and humidity monitor to control the



### Design and Implementation of Large Computer Room Environment

This paper designed an intelligence remote monitoring system based on Web. The system



used B/S architecture to realize real-time monitoring and adjusting the value of the environment

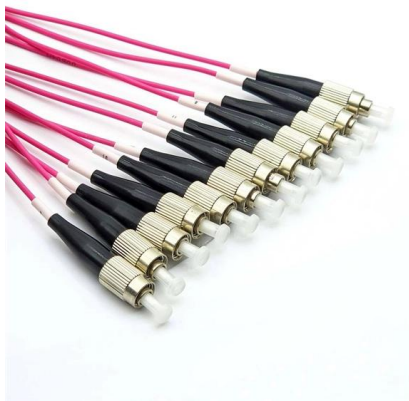


### Typical Networking Architectures for Campus Networks and

These networks are classified as campus networks and are usually built by the companies or organizations themselves. Campus networks not only enhance the operational efficiency of

### Typical Networking Architectures for Campus Networks and

This chapter will introduce the definition of campus network, explain the typical networking architecture of campus network, analyze the planning and design methods of small campus network, deployment



### Design and implementation of the campus network monitoring system

Running a set of effective campus network monitoring software is real needed for the campus network management and maintenance personal safety.



## Study of Computer Room Network Monitoring Management System

Abstract. In this dissertation, from the college computer room reality, based on: existed resources to develop a network monitoring management system. Major research of the dissertation is how to



## Design and Implementation of Login-Based Wi-Fi Hotspot Network for

By addressing those major challenges and concerns in this paper, we have proposed a Wi-Fi hotspot network for a university campus that will include MikroTik HotSpot Gateway to provide

## Research on energy saving of computer rooms in Chinese colleges

The monitoring methods of critical parameters such as the computer room's thermal environment and energy consumption are given. Corresponding solutions for computer room



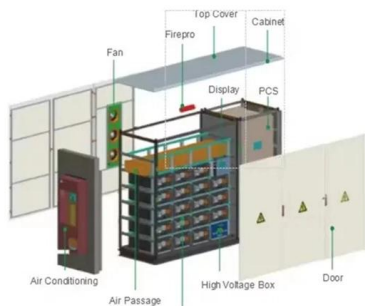
## Understanding Student Monitoring

What types of student data are monitored? Schools implement student monitoring by contracting with a third-party technology service that



### Access Control and Monitoring for Campus Computer Labs

Executive Summary Computer labs at the universities are used in three general situations: practical demonstrations, individual work by students on projects and conducting exams. Depending on the



### Design of intelligent campus monitoring system based on Internet of

This paper describes the structure of the monitoring system, designs the network architecture and network nodes of the monitoring system, and realizes the data collection and

### Design and Implementation of Network Monitoring

The paper presented a layered multi-agent system that consists of three agent types to monitor the network of Campus Infrastructure and maintain





## Wi-Fi for college campuses: A network setup guide

Create reliable connectivity with Wi-Fi for college campus life. From dorms to libraries, campus area networks (CANs) handle high-density traffic with

### Campus Network and Security

The sample design also includes redundant datacenters and multiple campus sites, interconnected via a wide area network. The datacenters host essential internal services for campus users and IoT



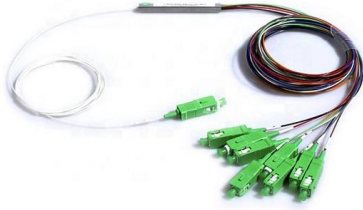
### 9 Configuring and Managing the Campus Network

Understand the auxiliary services needed to operate a network, such as DHCP and DNS  
Understand the process of requesting an IP  
Understand how to use SNMP tools for network management

### Network monitoring for Education sector

A network monitoring tool that can manage networks distributed across the globe with a central probe guarantees an uninterrupted learning experience--anywhere, anytime!



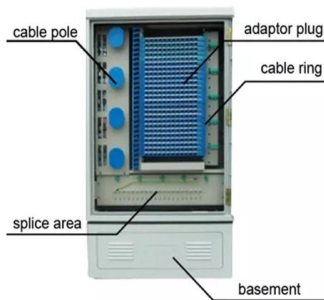


## Campus Network Design Guideline

Introduction Building a Campus network is more than only interconnecting physical network infrastructure devices. The most challenging

## What are campus networks? , NTT DATA

What's next for campus networks? The future of campus networks promises even more flexibility and efficiency: Innovations such as software



## Real-Time, Insight, Proactive: Telemetry for End-to-End Campus

With AmpCon-Campus Telemetry, IT teams gain real-time visibility, predictive insights, and proactive alerts, empowering them to manage campus networks more efficiently and reliably.

## The Complete Guide to Campus Area Networks

A Campus Area Network (CAN) is a computer network that interconnects multiple Local Area Networks (LANs) within a defined geographical



### Toward an Intelligent Campus: IoT Platform for Remote

This work proposes an IoT platform for remote monitoring and control of smart buildings, which consists of four-layer architecture: power layer, data



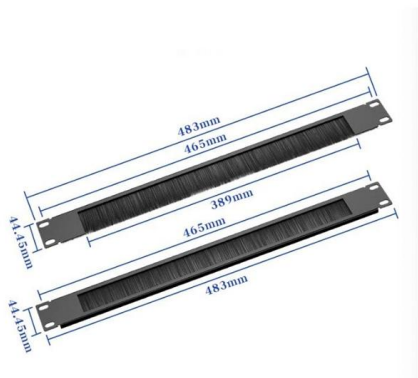
### CampusEMonitor: Intelligent Campus Environment

CampusEMonitor is capable of monitoring temperature, humidity and environmental gases in campus spaces and can be used for quick decision making. Additionally,



### What Is a Campus Area Network (CAN)? , Benefits

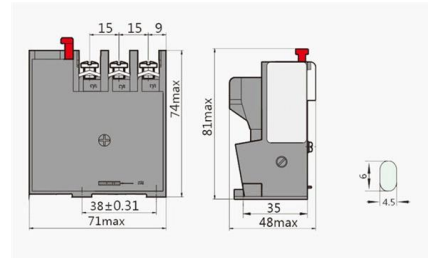
Explore the dynamics of a Campus Area Network (CAN). Understand what it is, use cases, and how it transforms computer and corporate networks.





## Design and Implementation of Network Monitoring System for Campus

In our case, the multi-agent system prototype used for network monitoring was implemented and deployed in computer equipment and network devices such as switches or a router.



## CampusEMonitor: Intelligent Campus Environment Room Monitoring

CampusEMonitor is capable of monitoring temperature, humidity and environmental gases in campus spaces and can be used for quick decision making. Additionally, CampusEMonitor

## Campus LAN and Wireless LAN Solution Design Guide

Cisco Digital Network Architecture (Cisco DNA) provides a roadmap to digitization and a path to realize immediate benefits of network automation,



## Contact Us

For datasheets, pricing, or custom telecom energy solutions, please visit: <https://koskolong.co.za>