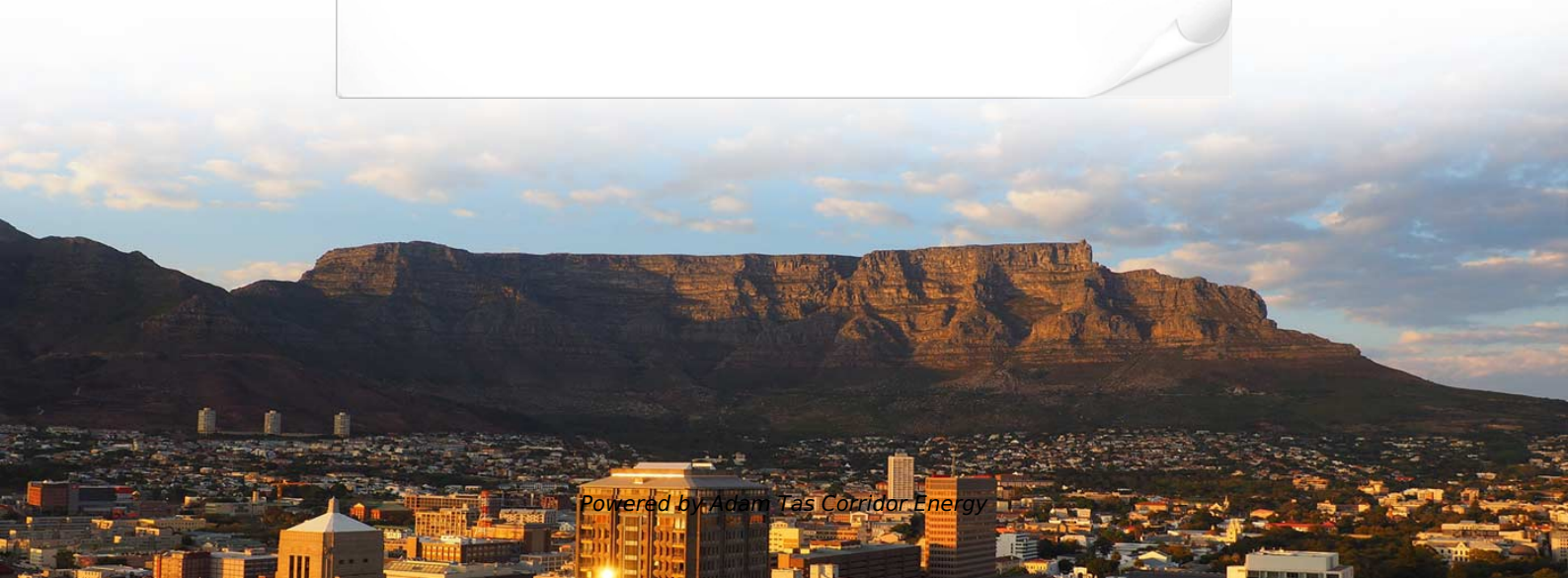




**Adam Tas Corridor Energy**

# **Can PoE switches and non-PoE switches be used interchangeably**





## Overview

---

In addition, many PoE switches can automatically disable the PoE part of the signal for ports that do not need/request/support it, making them more power-efficient. Comparing PoE vs Non-PoE Switch: Can They Work Together?

A PoE switch is a regular network switch that has Power over Ethernet functionality integrated. PoE devices are network equipment that can send out or receive the PoE power along with data, such as PoE switches, IP cameras, wireless access points, while non-PoE devices can only. However, the coexistence of old and new devices and different standards is common.



## Can PoE switches and non-PoE switches be used interchangeably

---

### Troubleshooting PoE on MS switches



This can be observed by taking a dashboard packet capture (Packet Capture Overview) on the switch port where the PoE device is plugged in, if the end device supports CDP/LLDP. For information on

### Can PoE Switch Be Used with Non-PoE Switch?

For those who have both PoE and non-PoE switches, they may wonder whether the PoE switch can supply power to the device through the non-PoE switch? The answer is NO! PoE will only



### Can Use PoE Switch with Non-PoE devices?-Blog-GZCOM

By implementing these troubleshooting measures, users can overcome common challenges associated with connecting non-PoE devices to a



### Comparing PoE vs Non-PoE Switch: Can They Work

Yes, PoE and non-PoE devices can coexist on the same PoE switch. Modern PoE switches are



designed to handle mixed-device environments, automatically

| PRODUCT CATEGORY           |                                 |                             |                                  |                               |
|----------------------------|---------------------------------|-----------------------------|----------------------------------|-------------------------------|
| Open rack Series           | 2000U Open rack                 | 12U Open rack               | 18" Depth Wall rack              | Adjustable Depth Open rack    |
| Wall mount rack Series     | Glass door Wall mount rack      | Mesh door Wall mount rack   | Double section Wall mount rack   | Economic type Wall mount rack |
| Floor standing server rack | Glass door with casters         | Mesh door with casters      | 42U Standard Server rack         | Double door Server rack       |
| Outdoor cabinet            | air conditioner Outdoor cabinet | Outdoor cabinet with plinth | Outdoor cabinet with fan cooling | Double Wall Outdoor cabinet   |
| Splitter series            | Bare Fiber Splitters            | Blackless Fiber Splitters   | ABS Splitter                     | Fanout Splitters              |
| Splitter series            | LC Splitters                    | Rack Mount Splitters        | Mini Plug-in Type Splitter       | Tray Splitters                |
| Patch cord series          | LC                              | SC                          | FC                               | ST                            |
| FTTH product series        |                                 |                             |                                  |                               |



### Comparing PoE vs Non-PoE Switch: Can They Work

In conclusion, PoE and non-PoE switches and devices can indeed work together in modern network setups. Understanding the differences and capabilities of each

### UPoE vs PoE+: A Guide to Power Over Ethernet Standards

We break down the real differences in the UPoE vs PoE+ debate, including 802.3at vs 802.3bt, cabling, and what your high-power devices actually



### Can PoE Switch Be Used with Non-PoE Switch

But the PoE switch is not an independent entity in the entire network. It can access the aggregation switch at the upper end and the distributed switch at the lower end. General PoE switches have a



## Can PoE Switch Be Used with Non-PoE Switch/Devices?

But the PoE switch is not an independent entity in the entire network. It can access the aggregation switch at the upper end and the distributed switch



## Can Use PoE Switch with Non-PoE devices?-Blog-GZCOM

Ensure that the Ethernet cable used to connect the non-PoE device to the PoE Switch is securely plugged into both devices. Moreover, confirm that the



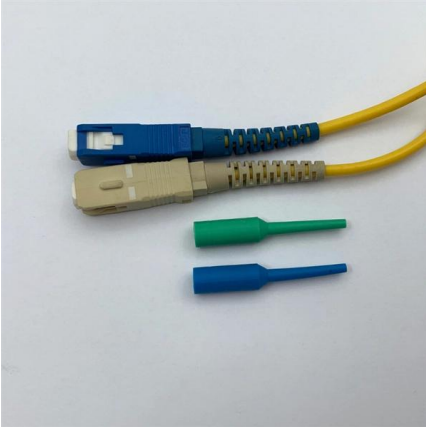
## Mixing POE and Non-POE Devices

Sosipater wrote: Yes, PoE will only send power if it requested by the device. Otherwise the switch just interacts with it as if it were a regular switch. +1 to Sosipater. Yes, this is done all of



## PoE Switch vs Non-PoE Switch , Functionality and Usage , Modn

Learn the key differences between PoE and non-PoE switches in performance, data transfer, and power delivery, with Ruijie examples to guide your choice.



### Can PoE Switch Be Used With Non-PoE Switch

It can access the aggregation switch at the upper end and the distributed switch at the lower end. General PoE switches have a port called uplink port, which is interconnected with ordinary



### Can PoE Switch Be Used with Non-PoE Switch? , FS Community (2025)

A PoE switch is a regular network switch that has Power over Ethernet functionality integrated. It allows compatible devices, such as VoIP phones, network surveillance cameras or



### Problem Solved: Mixing PoE and Non-PoE on the Same

Well, it all depends on what type of switches you're using. If you're using a regular network switch, there'll be no hazard connecting both PoE and





## Can you mix PoE and non-PoE devices on the same switch

Yes, PoE does not interfere with normal switch operation. PoE and non-PoE devices can be mixed on the same switch. In addition, many PoE switches can automatically disable the PoE part of the signal

## Can a PoE Switch Power Non-PoE Devices? The Safe

YES. It's easier than you think to connect non-PoE devices to a PoE switch. Learn the 2 safe methods that prevent damage to your equipment.

**5-INCH COLOR TOUCHSCREEN**  
Intuitive operation, easily accessible with just one touch



## POE vs. Non-POE Switches: What's the Difference?

POE switches can simplify network deployments in outdoor environments? With the ability to power devices remotely, POE switches eliminate the need for separate

## PoE and a Non-PoE switch

A PoE switch has PoE built into it. Using just a single power source to connect the switch, the switch itself can act as a power supply for the other



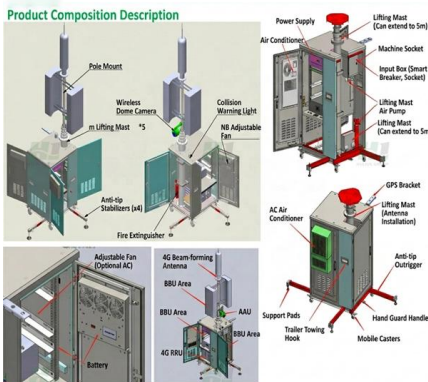


## Using POE Switches with non-POE switches

My suggestion is to use a PoE switch where the number of handsets makes sense. As others have mentioned you can always buy PoE injectors instead and keep your existing switches,

## Can a 24 port PoE switch be used with non-PoE devices?

Flexibility: You can use a PoE switch with both PoE and non-PoE devices, making it a versatile solution for various networking needs. Simplified



## Problem Solved: Mixing PoE and Non-PoE on the Same Network Switch

Can You Mix Poe and Non-Poe Devices on The Same Network Switch? Use Poe Injectors to Connect Non-Poe with Poe. How to Use The Poe Injector. Use Poe Splitters to Connect Poe with Non-Poe. How Does A Poe Splitter Work? How to Use The Poe Splitter. Well, it all depends on what type of switches you're using. If you're using a regular network switch, there'll be no hazard connecting both PoE and non-PoE devices on the same modem, but the question is only data can be transmitted down the network cable since the regular network switch is not PoE-enabled to supply power over Ethernet. [See more on fastcabling.com](http://www.fastcabling.com)

## PoE vs Non-PoE Switches: Can They Work Together? - Optech

Good news: PoE and non-PoE switches can



absolutely work together --as long as you design the network with power budgeting, standards compliance, and uplink planning in mind. This guide breaks

## Can I Use a Poe Switch with a Non-poe Device in 2025? -- tldr

Cost Efficiency: Utilizing PoE switches with non-PoE devices can be cost-effective, as it negates the need to mix and match networking equipment. This integration becomes crucial as more



## What is the difference between PoE Switch and Non

Both Non-PoE Switches and PoE switches are based on this core principle, but PoE switches add power supply capabilities on top of the basic

## POE vs. Non-POE Switches: What's the Difference?

If you already have non-POE switches in place and replacing all of them is not feasible, a non-POE switch would be the logical choice. However, if you're



## Plugging non-PoE Devices Into PoE Switches: Will It Go

PoE switches LITERALLY send electricity surging



down an Ethernet cable. So what happens if you plug a non-PoE device into such a switch? I test it

### **Can PoE Switch Be Used With Non-PoE Switch**

It can access the aggregation switch at the upper end and the distributed switch at the lower end. General PoE switches have a port called uplink port, which is interconnected with ordinary switches,



### **PoE and Non-PoE Device Compatibility Detailed**

Understanding the compatibility between PoE and non-PoE devices is essential for stable network operation.?? This understanding also helps prevent potential device damage.

### **Introduction to POE and Non-POE Network Switches**

Understanding POE (Power Over Ethernet) and Non-POE Switches In today's interconnected world, network switches play a crucial role in ensuring seamless communication





## **Pro XG 8 PoE Review: Ubiquiti's Best Home-Friendly 10G UniFi Switch**

Compact and powerful, the Ubiquiti Switch Pro XG 8 PoE is the best 10Gbps add-on for any network. Get one today!

## **Contact Us**

---

For datasheets, pricing, or custom telecom energy solutions, please visit:  
<https://koskolong.co.za>