



**Adam Tas Corridor Energy**

# **Can a PoE gigabit switch connect to another switch**





## Overview

---

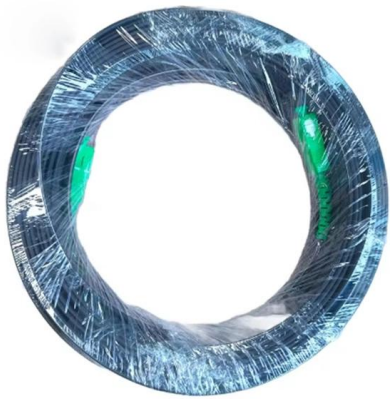
Can you link them together?

The short answer is yes, but there are some important considerations to keep in mind. ✓ Yes, you can connect two PoE switches together using standard Ethernet cables ✓ Modern switches typically have auto-sensing ports, making connections simpler. If I understand your question - can a switch be plugged into another switch, then yes. Multi-gigabit power over Ethernet (PoE) combines the high-speed capabilities of multi-gigabit Ethernet with PoE's convenience to supply data and power over a single Ethernet cable. As a leading PoE switch manufacturer, Howevision helps system integrators and network builders deploy robust, cost-effective solutions. In this blog, we will guide you through the key steps to ensure a successful PoE.



## Can a PoE gigabit switch connect to another switch

---



### How To Connect A Network Switch To Another Network

Learn how to connect a network switch to another network switch with this comprehensive guide. Understand the process and optimize your

### Can You Connect Two PoE Switches Together?

Learn how to connect two PoE switches together with this comprehensive guide. Discover setup steps and benefits for optimal network



### What is an Ethernet switch?

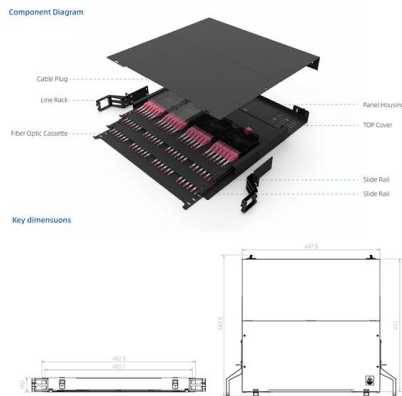
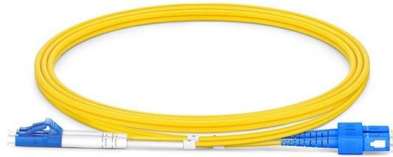
What is an Ethernet switch? An Ethernet switch is a type of network hardware that is foundational to networking and the internet. Ethernet switches connect cabled

### Can you use a POE switch with another POE switch?

Modern poe switches can detect the type of connections they get. Older versions weren't as



smart and could toast a none poe device (including



### What is poe vs gigabit switch?

When comparing PoE and Gigabit switches, it's important to note that these terms are not mutually exclusive. In fact, many switches combine both PoE capabilities and Gigabit speeds. However,

### PoE vs PoE+ vs PoE++ Switch: How to Choose?

This article explains the differences between PoE, PoE+, and PoE++ switches, and how to choose the right type that best suits your needs.



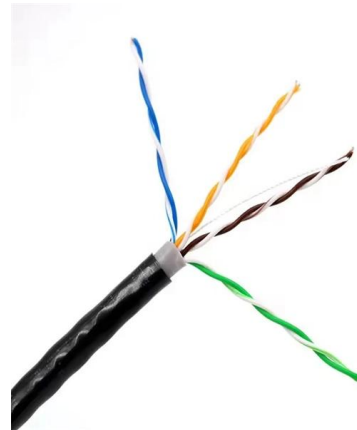
### What is a gigabit switch?

If the switch is connected directly to the destination device, the device accepts the data packet, responds, and the transmission is complete. If the device is



### Can you use a POE switch with another POE switch?

If I understand your question - can a switch be plugged into another switch, then yes. If you expect to power that switch via POE, then no. The power



### Power over Ethernet

Power over Ethernet In this configuration, an Ethernet connection includes Power over Ethernet (PoE) (gray cable looping below), and a PoE splitter provides a



### Can you use a POE switch with another POE switch?

Assuming your 10 current POE cameras are "IEEE 802.3af" compliant (max power each is 15.4W), you need a IEEE 802.3af/at POE+ Unmanaged LAN switch with at least a 160W power



### Network Switches 101: Unmanaged vs. Managed vs.

This particular switch can also draw power from another PoE switch. Short for Power-over-Ethernet, PoE is a feature where a switch's port can power



## Can a PoE Switch Be a Normal Switch? , Yes

First, connect the main PoE switch to a router or a network switch using an Ethernet cable. Second, connect the other PoE switches to the core



## A Beginner's Guide to Multi-Gigabit Power over Ethernet

A beginner's guide to multi-gigabit power over ethernet (PoE), including how to take advantage of its capabilities.

## Gigabit Ethernet Plus Switches User Manual

If you cannot connect to the switch over a network connection, you can use an Ethernet cable to connect your computer directly to the switch, and then you can set the IP address of the switch.



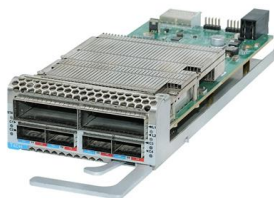


## What Is A PoE Switch And How To Choose The Right

PoE (Power over Ethernet) is a technology that allows power to be transmitted through network cables, A PoE switch comes equipped with numerous

## Gigabit Switch: What It Is, How It Works & Which to

Learn what a Gigabit Ethernet switch is, how it works, key features, and how to choose or connect one. Compare managed vs unmanaged and SFP

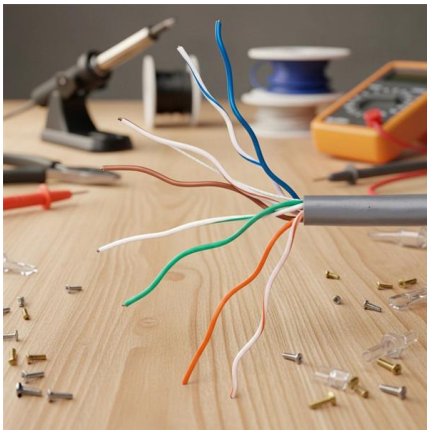


## What is a PoE Switch

A Power over Ethernet switch is a network switch that has PoE functionality integrated. Learn about different variations, limitations and benefits of

## Can you connect 2 PoE switches together?-Blog-GZCOM

Yes, Connecting PoE Switch to each other is multi-purposed and part of evenly distributed network operations. By interconnecting two PoE switch, organizations can significantly



### **PoE+ Gigabit Ethernet Plus Switch , NETGEAR Communities**

But, what if I then plug another device into another port, without disabling the power on that port? I believe that I read somewhere that a PoE switch queries newly connected devices, to

### **How to connect multiple switches together?**

For example, the core switching fabric in my office is two gigabit switches with 4 ports connecting them, providing a 4Gb/s backbone between those two switches. I don't know if GS724T



### **A Beginner's Guide to Multi-Gigabit Power over Ethernet**

IoT applications can facilitate smart parking infrastructure and asset tracking. Transportation hubs can create a more secure, efficient, and connected



## Comparing PoE vs Non-PoE Switch: Can They Work

PoE and non-PoE switches can coexist in the same network. A typical PoE switch includes an uplink port that allows it to connect upstream to a non



## Can you connect a PoE switch to another PoE switch?

Switch stacking is to connect two or a group of network switches to form a single stack unit that can be managed in a simple way. For example, in a small business network (PoE is necessary),

## Cloud Network Infrastructure

Leaf switches provide connectivity to storage, compute, service, and data center edge network elements. Leaf switches may be deployed by themselves or in a



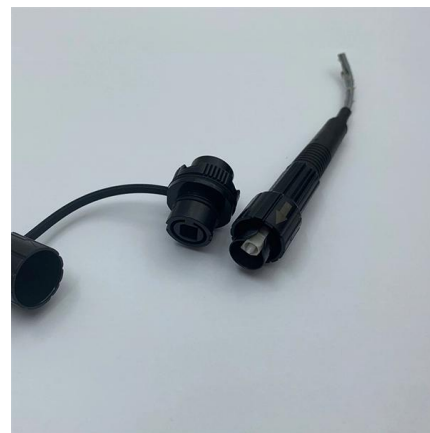
## Gigabit Ethernet Switch Guide: How It Works, Types

A Gigabit Ethernet switch is a crucial networking device that allows multiple devices to communicate at high speeds (up to 1,000 Mbps). Whether



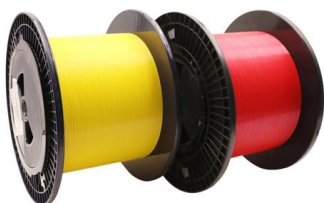
### **Can You Connect Two PoE Switches Together?**

Yes, you can connect two PoE switches together, and this is a common scenario in many networking setups. When done correctly, linking PoE



### **LAN to LAN (Switch to Switch) Max ethernet length 1 gig (1000tx)**

In your case, you mention that you are using a Cat6 or Cat6a cable that runs for 372 feet between two switches and you are not experiencing any issues such as drops, connection issues, or



### **Can I connect wired devices to my network using an Ethernet switch**

Should I use a managed or unmanaged switch? To ensure the best possible experience, we recommend using an unmanaged network switch, especially when hardwiring eeros to one another.





## Can I Connect an Ethernet Switch to Another Ethernet

It connects your devices by using packet switching to receive, process, and forward data from one source device to another destination device.

## Contact Us

---

For datasheets, pricing, or custom telecom energy solutions, please visit:  
<https://koskolong.co.za>