



**Adam Tas Corridor Energy**

# **Can core switches be debugged using network cables**





## Can core switches be debugged using network cables

---



### SMB Network Design: Core vs. Distribution vs. Access Switches

Don't overspend on network hardware. Our expert guide explains core, distribution, and access switches so you can design the right network for your SMB.

### Switched Ethernet

Because these switches include network management and network software capabilities, they are referred to as active devices. These switches may perform some error examines before to



### Switch Port Configuration and Troubleshooting

Complete hardware failure is relatively uncommon, so if you can rule out power and cabling problems, then for a network adapter, verify that the driver

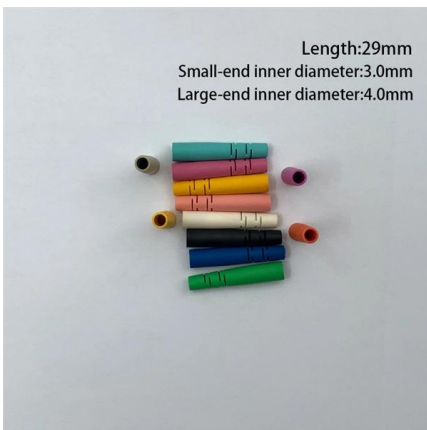


### Topology for LAN switches using fiber

I am planning to connect core switch to multiple switches using 6 strand fiber cable which type of



connection is resilient Star or Ring??? If I make star then do i have to use new



### Understanding Core Switch: What It Is and How to

In the realm of system networking, three key types of switches are frequently mentioned: access switches, aggregation switches, and core switches.

### What Is a Core Switch in Networking?

Unlike access switches, which connect directly to end-user devices, the core switch focuses on aggregating and routing traffic between other



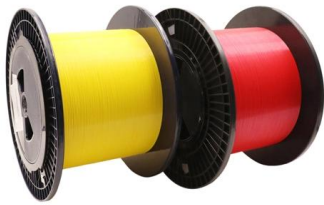
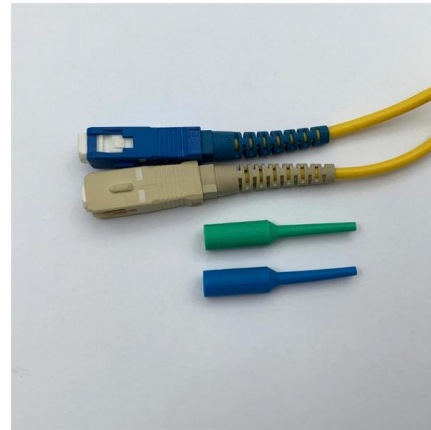
### ITEE::Future Data Centers Core Switches Design Challenges

Compared with the telecommunication system, in this architecture, the ToR switches are used as an optical network units and the Aggregate switch is used as optical link terminator.



## Connecting core switches

Possibly not, as @paul driver has already noted, some switches support auto MDI/MDI-X, i.e. you can use straight through or cross over cables.

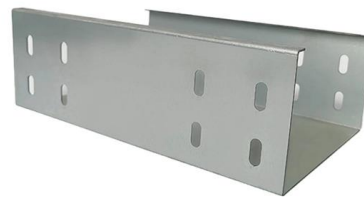


## Ultimate Guide to Network Cable Testing with a Cable

Your network infrastructure's reliability and performance begins with one basic step--testing your network cables. Cables that are damaged or not

## Core Switches: The Pillar of Network Infrastructure

Get a closer look at core switches: the nerve centers of network infrastructure that enhance performance and facilitate growth.



## Switched Ethernet

Ethernet switches are classified into three varieties based on their network structure or size: access, distribution, and core. Switching networks frequently feature a tree-root structure, with



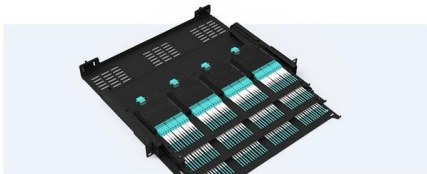
## Differences Between the Core Switch and Normal

The so-called core switch is for the network architecture. If it is a small local area network with several computers, a small switch with 8 ports can be



### Pre-Terminated Patch Panel

Standard 19" width    Max 144 fibers in 1U    Ultra-High Density Ready



Dual-sail, easy install & maintain



Lightweight ABS RPO cassette



Premium sheet metal with matte coating

## Devices & Cabling , NetBox Documentation

At its heart, NetBox is a tool for modeling your network infrastructure, and the device object is pivotal to that function. A device can be any piece of physical hardware installed within your

## Network Switch Troubleshooting Guide: Common

A comprehensive switch troubleshooting from the physical layer to the data link layer to the network layer to find out why your network switch is not





## The laboratory test topology; the core and access

The laboratory network architecture also follows the standard layered approach recommended by Cisco for enterprise/campus-like networks where switches

## What Is a Core Switch? Network Backbone Architecture Guide

Networks scaling between 50 and 150 devices are optimally served by a collapsed core topology, and only networks exceeding 150 devices require a dedicated enterprise core switch to



## Understanding the Core Switch: Key Differences and Uses

Explore the core switch's role as the backbone of your network. Discover key differences, uses, and insights into layer 3 core switch technology.



## How to Choose the Suitable Number of Fiber Cores for Your Network

Fiber optic cables are essential to modern networks, enabling high-speed and reliable data transmission. Among their many features, the number of fiber cores directly affects data

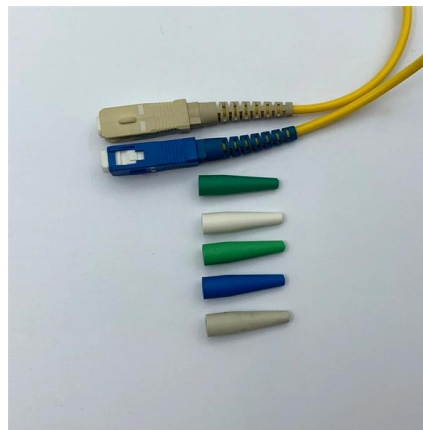


### What is the difference between a core switch and a

A PoE switch is a switch that supports power supply to a network cable. Compared with a normal switch, a terminal (such as an AP, a digital camera, etc.)

### ITEE::Future Data Centers Core Switches Design Challenges

Figure 2(a) demonstrates the structure of a normal data center networks. Individual racks house contains several servers, which associate with a Top of-Rack (ToR) switch through copper cables.



### What is Core Switch and How to Choose?

Discover what a core switch is and learn how to choose the right one for your network. Explore key features in selecting a core layer switch. Make





## Basics of debugging the controller area network (CAN) physical layer

The controller area network (CAN) standard continues to grow and is being adapted into many new applications outside of automotive and industrial networking. Micro-processors supporting it have

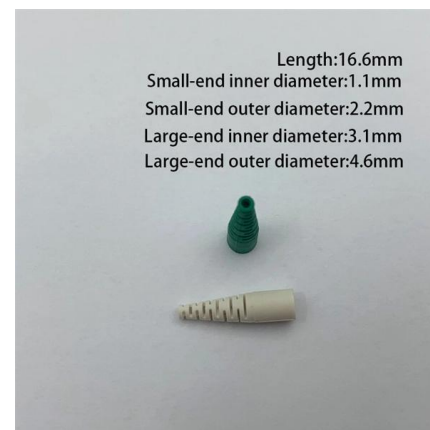


## Topology for LAN switches using fiber

When I worked with large networks, I was doing monitoring or using such networks. For smaller networks, pure LAN ring topology was used in the past millennium with Token Ring or with

## Tracing a network cable that is already connected to the

From their site: Modern network devices use aggressive termination schemes for cables connected to their ports. While this termination reduces noise



## How to Connect Ethernet Cables

Ethernet switches can connect multiple devices to a router via one Ethernet cable instead of each device needing a cable going to the router. Ethernet switches are helpful for when



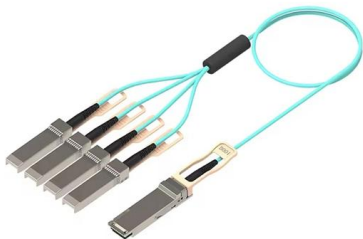
### Connecting Wireless Switches and Routers to the Core

By using Ethernet cables, wireless switches can aggregate data from multiple access points and manage network traffic, while wireless routers route



### Connecting Wireless Switches and Routers to the Core

The wireless switch is connected to the core network using Cat 6 or Cat 6a Ethernet cables. These cables provide a high-speed, reliable link between



### How to Choose the Suitable Number of Fiber Cores for

Fiber optic cables are essential to modern networks, enabling high-speed and reliable data transmission. Among their many features, the number of





## The Fundamentals of Ethernet Cabling in an Enterprise

Through our studies, we learn about the devices that are part of an enterprise data network such as switches, routers, wireless access points, and also about

## How To Test Network Wiring : Tools, Tips And Tricks

How to test network wiring without a tester  
Testing network wiring might seem challenging if you need a dedicated tester. Still, there are several



## Contact Us

---

For datasheets, pricing, or custom telecom energy solutions, please visit:  
<https://koskolong.co.za>