



Adam Tas Corridor Energy

Can the Huawei 5720s be used as a core switch





Can the Huawei 5720s be used as a core switch

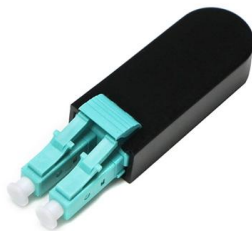
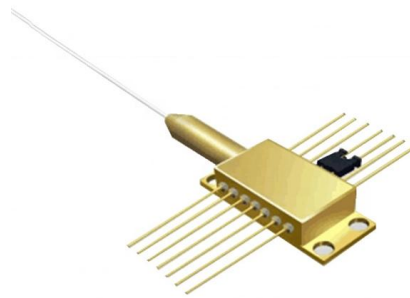


S5720S-28X-SI-AC

Version Mapping Table 4-1763 lists the mapping between the S5720S-28X-SI-AC chassis and software versions.

S5720-SI Series Standard Gigabit Ethernet Switches

The S5720-SI supports Super Virtual Fabric (SVF), which virtualizes the "Core/Aggregation switches + Access switches + APs" structure into a single logical device.



S5720-SI Series Standard Gigabit Ethernet Switches

Introduction The S5720-SI was developed based on next-generation high-performing hardware

The Differences Of Huawei S5720 LI, SI, EI And HI Series

The switches are developed based on the Huawei Versatile Routing Platform (VRP) to implement software definition and service change on demand. With services



and the Huawei Versatile Routing Platform (VRP).
The S5720-SI supports simplified operations and



Huawei S5720 Series Switch: Comparison & Guide for

Conclusion The Huawei S5720 series offers a comprehensive, modular approach to campus and branch switching--from energy-efficient gigabit

Huawei S3700, S5700 and S6700 Switches Support Guide, Manuals

S3700& S5700& S6700 Series S5720S-28X-LI-AC:
Access product manuals, HedEx documents,
product images and visio stencils.



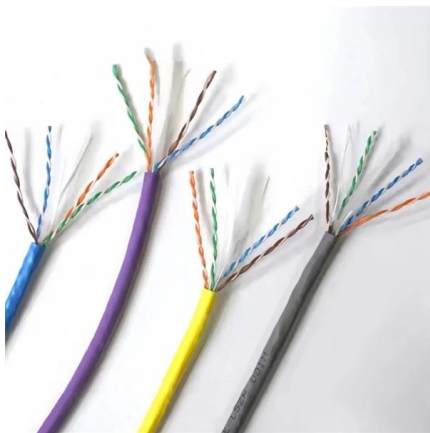
Huawei S5720 Series Switch: Comparison & Guide for SMB and

Conclusion The Huawei S5720 series offers a comprehensive, modular approach to campus and branch switching--from energy-efficient gigabit access to high-performance PoE+ cores. With four tiers



Huawei S5720-C-EI Manuals , ManualsLib

Manuals and User Guides for Huawei S5720-C-EI. We have 2 Huawei S5720-C-EI manuals available for free PDF download: Quick Start Manual



S5720S-12TP-LI-AC

Heat Dissipation The S5720S-12TP-LI-AC has no fans and uses natural heat dissipation.

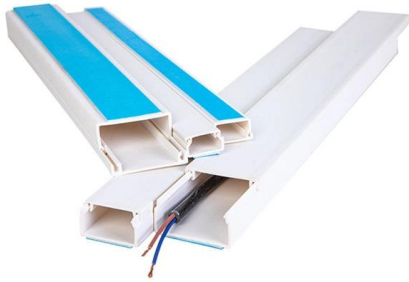
S5720-28X-SI-AC Datasheet Overview

Multiple S5720-SI can be connected with stack cables to set up a stack, which functions as a virtual switch. A stack consists of a master switch, a backup switch, and several slave switches.



S5720-LI Series Simplified Gigabit Ethernet Switches

Introduction Building on next-generation, high-performance hardware and the Huawei Versatile Routing Platform (VRP), the S5720-LI series support intelligent stack (iStack), flexible Ethernet networking,



S5720S-52P-LI-AC

When a 1000BASE-X port uses a GE copper module, it can transmit and receive data at 10 Mbit/s, 100 Mbit/s, or 1000 Mbit/s. Table 4-1713 describes the attributes of a 1000BASE-X Ethernet optical port.



S5720S-28X-SI-AC

You can connect a switch to a configuration terminal or network management workstation through the ETH management port to configure the switch locally or remotely.

Huawei S5720S-SI Service Manual

It also provides enhanced Layer 3 features and mature IPv6 features. The S5720-SI can be used in various scenarios. For example, it can be used as an access or



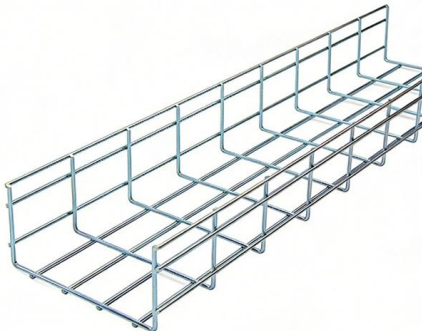


S5720-SI Datasheet (Detailed Version)

S5720-SI Datasheet (Detailed Version) S5720-SI Datasheet (Detailed Version) 1 Introduction Huawei S5720 series Ethernet switches are next-generation energy-saving Gigabit Ethernet switches that

S5720S-52X-SI-AC

The S5720S-SI series switches provide a command for setting fault indicators, which help field maintenance personnel find a faulty switch quickly. The SYS indicator and mode indicators (STAT,



S5720S-52P-SI-AC

When a 1000BASE-X port uses a GE copper module, it can transmit and receive data at 10 Mbit/s, 100 Mbit/s, or 1000 Mbit/s. When a 1000BASE-X port uses a 10GE optical module, SFP+ high-speed

S5720S-LI

Support Documentation Switches Campus Switch S3700& S5700& S6700 Learn About Products Hardware Description



Huawei S5720-HI Manuals , ManualsLib

Manuals Brands Huawei Manuals Switch S5720-HI Huawei S5720-HI Manuals Manuals and User Guides for Huawei S5720-HI. We have 2 Huawei S5720-HI manuals available for free PDF



- 100KWH/215KWH
- LIQUID/AIR COOLING
- IP54/IP55
- BATTERY 6000 CYCLES

Huawei S5720-EI Series Switches Product Datasheet PDF

S5720-EI Datasheet (Detailed Version) f S5720-EI Datasheet (Detailed Version) 1 Introduction Huawei S5720 series Ethernet switches (S5720 for short) are next



S5720S-52X-LI-AC

Indicator Description The S5720S-52X-LI-AC has similar indicators to those of the S5720-28X-PWR-LI-AC except that the S5720S-52X-LI-AC does not have an RPS, USB, or PoE mode indicator. For





S5720-SI Datasheet (Detailed Version)

It also provides enhanced Layer 3 features and mature IPv6 features. The S5720-SI can be used in various scenarios. For example, it can be used as an access or aggregation switch on a campus



S5720-EI Series Enhanced Gigabit Switches

S5720-EI Series Enhanced Gigabit Switches
Huawei S5720-EI series switches provide flexible all-gigabit access and enhanced 10GE uplink port scalability. They are widely used as

Huawei S3700, S5700 and S6700 Switches Support Guide, Manuals

S3700& S5700& S6700 Series S5720-56C-EI-48S-AC: Access product manuals, HedEx documents, product images and visio stencils.



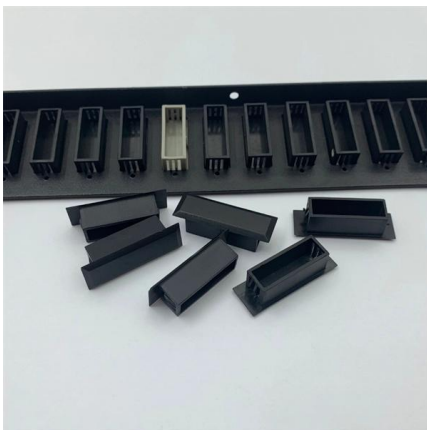
Huawei S5720S Switch Series: Gigabit PoE+ for SMB

The Huawei S5720S series delivers practical, original Gigabit switching solutions tailored for access and aggregation needs across



Huawei S5720-LI Series Switches

The document describes Huawei S5720-LI series simplified Gigabit Ethernet switches. It provides an overview of the product including available models, port



S5720-LI Datasheet (Detailed Version)

It implements millisecond-level protection switching based on traditional Ethernet MAC and bridging functions. The S5720-LI supports Smart Link, which implements backup of uplinks. One S5720-LI

S5720-HI Datasheet (Detailed Version)

Huawei S5720-HI series are advanced Gigabit Ethernet switches that provide rich agile features. The switches are developed based on Huawei Versatile Routing Platform (VRP), and use the fully





Huawei S5720S Switch Series: Gigabit PoE+ for SMB

Explore Huawei's S5720S switches: versatile Gigabit switches in LI and SI variants. Learn about PoE+, stacking, Layer 3, and surge protection for

Huawei S5720-SI Series Switches Datasheet

As shown in the following figure, the S5720-SI series switches function as core switches on a small-sized enterprise campus network, providing powerful

8-Port PLC Fiber Splitter Box

12-Port SC Fiber Splitter Box

Size: 235*215*75mm
Material: ABS, IP65,



Contact Us

For datasheets, pricing, or custom telecom energy solutions, please visit:
<https://koskolong.co.za>