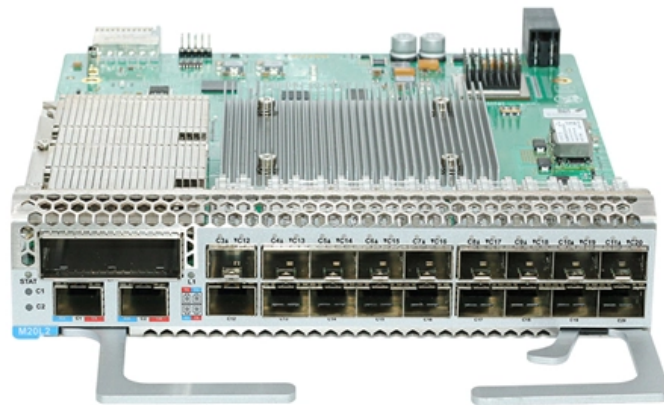




**Adam Tas Corridor Energy**

# **Canadian New South Wales Bridge**





## Overview

---

Gladesville Bridge is a heritage-listed concrete that carries over the, linking the suburbs of and, in the local government areas of and respectively, in, Australia. It forms part of the Great Western Highway near Mount Victoria, spanning a 150-metre (490 ft) depression between two large outcrops. At the time of its construction, one of the largest swing spans in the world and it was one of the first to be powered by electricity. The Grafton Bridge (New South Wales) over the Clarence River showing the Bascule span lifted to let shipping through (Postcard from about 1932; The "Southern Cross" aeroplane has been added to the photograph. In June 2025, Transport for NSW reduced the load limit on Hampden Bridge from 42.



## Canadian New South Wales Bridge

---



### Sydney Harbour Bridge

The Sydney Harbour Bridge is a steel through arch bridge in Sydney, New South Wales, Australia, spanning Sydney Harbour from the central business district

### Former Prince of Wales Bridge gets renamed, and \$14M

Residents are one step closer to being able to walk, cycle and perhaps even cross-country ski across the Ottawa River at Bayview Station after council



### Mitchell's Causeway

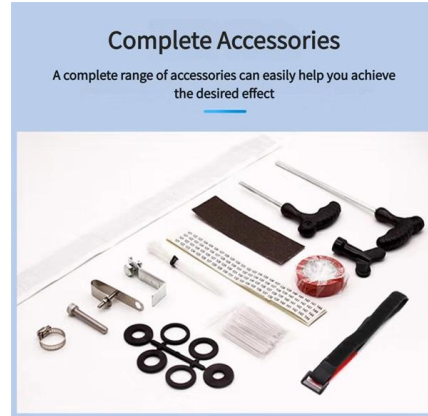
The Mitchell's Causeway, also known as the Convict Bridge, is a historic sandstone causeway in the Blue Mountains of New South Wales, Australia. It forms part of the Great Western Highway near

### Anzac Bridge

The Anzac Bridge is an eight-lane cable-stayed bridge that carries the Western Distributor (A4) across Johnstons Bay between Pyrmont and



Glebe Island (part of



### Chief William Commanda Bridge, Ottawa

The Chief William Commanda Bridge, formerly the Prince of Wales Bridge, is a disused rail bridge in Canada, which spans the Ottawa River between Ottawa,

### The Tale of George Chaffey Bridge: A Symbol of Connection and

The George Chaffey Bridge, named after the Canadian engineer and irrigation pioneer George Chaffey, is a vital structure that spans the Murray River, linking the towns of Mildura in Victoria and Buronga in



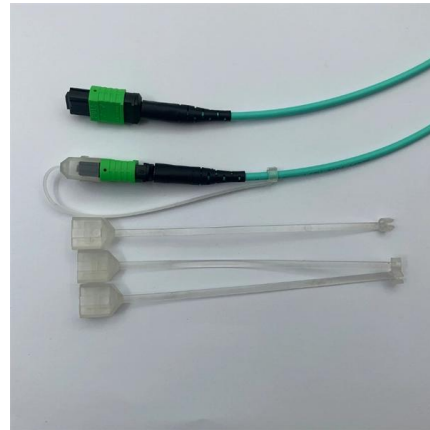
### New international bridge in northern N.B. hits the

The construction project to replace an international bridge between the city of Edmundston and the town of Madawaska in Maine is nearing the



## Sydney Harbour Bridge: An Australian Icon , Institution of Civil

The New South Wales government ran a tendering process in 1924. With six companies bidding, the contract went to British firm Dorman Long



## Gladesville Bridge

[Overview](#)[History](#)[Description](#)[Heritage listing](#)[Engineering heritage awards](#)[Gallery](#)[Further reading](#)

Gladesville Bridge is a heritage-listed concrete arch road bridge that carries Victoria Road over the Parramatta River, linking the Sydney suburbs of Drummoyne and Huntleys Point, in the local government areas of Canada Bay and Hunter's Hill respectively, in New South Wales, Australia. Despite its name, the bridge is not in Gladesville. The Gladesville Bridge is a few kilometres upstream of the famous Sydney Harbour Bridge

## Google Maps

Find local businesses, view maps and get driving directions in Google Maps.



## List of Bridges in New South Wales

The Wollombi Brook bridge is a heritage-listed road bridge that carries Putty Road across the Wollombi Brook at Bulga, New South Wales,



Australia. The bridge was designed by Harvey Dare and built in

### Hampden Bridge

At this stage, no decision has been made on a new permanent bridge. However, the NSW Government has committed \$500,000 to begin planning for a



### Category: Road bridges in New South Wales

The following 92 pages are in this category, out of 92 total. This list may not reflect recent changes.

### Canada Bay Reviews: What to Know for Visiting

Nestled in the heart of Canada Bay, New South Wales, the region exudes an alluring blend of historical charm and contemporary allure, seamlessly





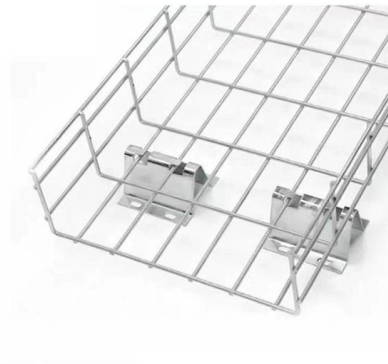
## What to Know About Canada's New Bridge to Detroit

What to Know About Canada's New Bridge to Detroit That Trump Hates President Trump's threat to block the opening of the new crossing is the



## Watson looks to rename Prince of Wales Bridge after

Ottawa's Prince of Wales Bridge is slated for a major overhaul this year, and if Mayor Jim Watson has his way, the revamp will include a new name.



## THE 10 BEST New South Wales Bridges to Visit (2026)

The bridge can be easily crossed on foot and has a beautiful view of Opera and City. The ascent of the pillars was not possible due to renovation, the bridge climb was and was used



## Brooklyn Bridge, New South Wales

The Brooklyn Bridge is a local nickname for the Hawkesbury River Road Bridge, a concrete girder bridge that carries the Pacific Motorway (M1) across the



**OEM/ODM**  
CUSTOMIZATION AVAILABLE



### List of bascule bridges

Broadwater Bridge, across the Richmond River - built using the renovated bascule span from the demolished Barneys Point Bridge on the Tweed River (New South

### CMU School of Computer Science

æi¥æç bridges æi¥ bridges ç?æ?, brief ç?ç?  
brief å¬äº<åOE briefcase æ~?äº® bright å?æ~?  
bright å?æ~? brighter æ~?äº® brighter äº®åº!  
brightness ä¹OEé¾(TM) brightness å --é?"  
brighton



### Canso Canal Bridge

The bridge is a 94 m (308 ft) long swing bridge of a truss design which carries the Trans-Canada Highway road and railway line across the canal immediately south of the southern end of the canal's



## Chief William Commanda Bridge Explained

The Chief William Commanda Bridge (fr, Pont Chef-William-Commanda), formerly the Prince of Wales Bridge, is a pedestrian/cycling bridge and former rail bridge that spans the Ottawa River between



## Sydney Harbour Bridge , Dimensions, Location, History,

Sydney Harbour Bridge Sydney Harbour Bridge in Port Jackson, New South Wales, Australia. Spanning 503 metres (1,650 feet), the structure is one of the longest

## Prince of Wales Bridge

The Prince of Wales Bridge (Welsh: Pont Tywysog Cymru), previously the Second Severn Crossing (Welsh: Ail Groesfan Hafren) until July 2018, is the M4 motorway bridge over the River Severn



## A new bridge to Canada

Despite many hold-ups and stumbling blocks, some due to the owner of the Ambassador Bridge, the downstream Gordie Howe Bridge, named after the



### Merivale Bridge

Since 1986 it also has carried the standard gauge line from New South Wales. It was designed by Cameron McNamara Pty Ltd (consulting engineers) and was



### Historic bridges of New South Wales

The following list illustrates the development of New South Wales bridge construction techniques. The list commences from the earlier constructions through to the later

### Neville Bonner Bridge

The Neville Bonner Bridge is a pedestrian bridge spanning the Brisbane River in Brisbane, Australia, connecting the Queen's Wharf precinct in the Brisbane





## Contact Us

---

For datasheets, pricing, or custom telecom energy solutions, please visit:  
<https://koskolong.co.za>