



**Adam Tas Corridor Energy**

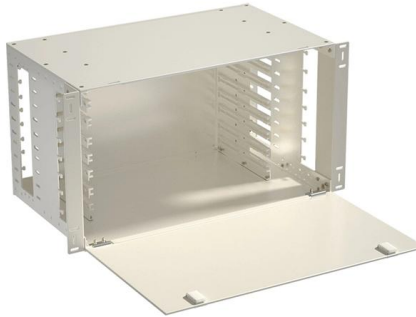
# **Certified Single-Fiber Bidirectional QSFP**





## Certified Single-Fiber Bidirectional QSFP

---



### Datasheet 40GBASE-SR Bi-Directional QSFP LC Duplex Transceiver

Datasheet Description I, Pluggable, LC Duplex, Fiber-Optic QSFP+ Transceiver for 40 Gigabit Ethernet Applications. This transceiver is a high performance module for short-range duplex data

### Introduction to 100G QSFP28 Bidirectional Transceivers

TARLUZ 100G QSFP28 Bidirectional transceivers are a cost saving solution for building a network or upgrading an existing network, the transceivers provide



### Cisco QSFP-100G-B20U4-I and QSFP-100G-B20D4-I 100G 20km Bidirectional

Bidirectional 100Gb on a single fiber Whether it's building a network or upgrading an existing network, the Cisco® QSFP-100G-B20U4-I and QSFP-100G-B20D4-I transceivers provide 100G connectivity

### 100G QSFP28 BiDi : Optical Transceiver Module , NEC

NEC's 100G QSFP28 BiDi optical transceiver enables the transmission and reception of



100Gb/s high-speed data over a single optical fiber. By enabling bidirectional



### Single Fiber Transceiver QSFP28-100G

The QSFP28-100G BiDi single fibre transceiver is the latest addition to DWDM.ME's portfolio of solutions The QSFP28-100G BiDi (Quad Small Form-Factor Pluggable 100G



### QSFP-100G-SR1.2 vs. QSFP28-BIDI-100G: Choosing

Explore the key differences between the QSFP-100G-SR1.2 and QSFP28-BIDI-100G. Learn how to select the best module based on fiber



### 100G QSFP28 / SFP-DD Modules and Cables FAQ , FS

The 100G BiDi transceiver refers to the QSFP28 single-mode fiber bidirectional optical module applied to 100G Ethernet. Each optical port on the QSFP28 BiDi contains both a transmitter and receiver,





## 100G BiDi QSFP28 SR1.2 150m , Single Fiber , EDGEOPTIC

EDGEOPTIC 100G BiDi QSFP28 SR1.2: 150m OM5 MMF single fiber, 850/900nm, 1.9dB budget, 106.25 Gbps PAM4. LC simplex connector for fiber-efficient data centers.

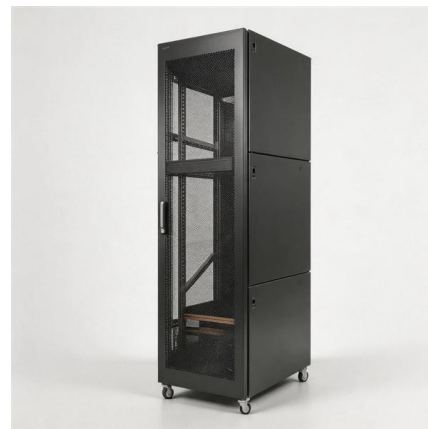


## 100G QSFP28 BIDI 30KM

The STC-QSFP28-BIDI-30KM is a high-performance 100G transceiver module using BiDi (Bidirectional) transmission technology, enabling simultaneous sending and receiving over a single fiber strand.

## Cisco 40GBASE QSFP Modules Data Sheet

Cisco QSFP 40G BiDi The Cisco QSFP 40-Gbps BiDirectional (BiDi) transceiver (Figure 1) is a pluggable optical transceiver with a duplex LC connector interface for short-reach data



## 100G BiDi QSFP28 LR1 10km Side B , PAM4

Our EDGEOPTIC BIDI-100G-Q28-SL10B is a multi-vendor compatible 100G BiDi LR1 QSFP28 bidirectional optical module designed for next-generation 100



### **40G QSFP BIDI vs 40G QSFP SR4 vs 40G QSFP UNIV: What Is the**

What Is 40G QSFP BIDI SR Optical Transceiver Module The 40GBASE-BiDi SR (Bidirectional Short Reach) module is a type of 40G optical transceiver that utilizes a single pair of



### **QSFP 40G SR BD: 40G QSFP+ BiDi Transceiver Explained**

QSFP-40G-SR-BD achieves 40GbE full-duplex transmission over a single pair of multimode fibers by using bidirectional (BiDi) optical signaling, where two separate wavelengths carry transmit and

### **40G BiDi QSFP+ 150m MMF , Two-Fiber , EDGEOPTIC**

EDGEOPTIC 40G BiDi QSFP+ transceiver: 150m OM4 multimode fiber, 850/900nm wavelengths, 2dB link budget, 41.25 Gbps. Two-fiber 40G solution, 0-70°C.





### **100G BiDi QSFP28 150m , Single Fiber MMF**

EDGEOPTIC 100G BiDi QSFP28: 150m OM5 MMF single fiber, 850/900nm, 1.9dB budget, 106.25 Gbps. LC simplex connector, also supports 40G QSFP operation.

### **100G QSFP28 Single Fiber (BiDi) Modules: Technology, Benefits**

100G QSFP28 single fiber (BiDi) modules are a practical, proven method to increase the effective capacity of existing fiber plants, reduce cabling complexity, and optimize total cost of

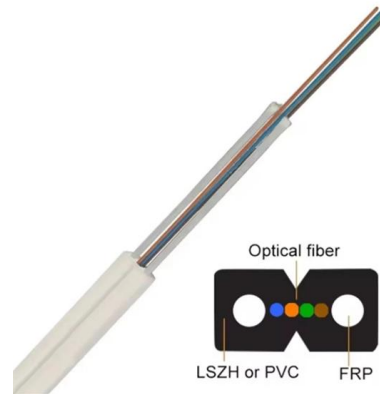


### **40G BiDi QSFP+: Single-fiber Bidirectional Transmission**

The interfaces of optical modules are mainly divided into single-fiber bidirectional BiDi and dual-fiber bidirectional (Deplx). In the wavelength division multiplexing system, the line transmission

### **Understanding 100G Single Fiber QSFP28 Module for**

100G single fiber QSFP28 modules enable fast, cost-effective network upgrades using one fiber strand, ideal for scalable modern data centers.



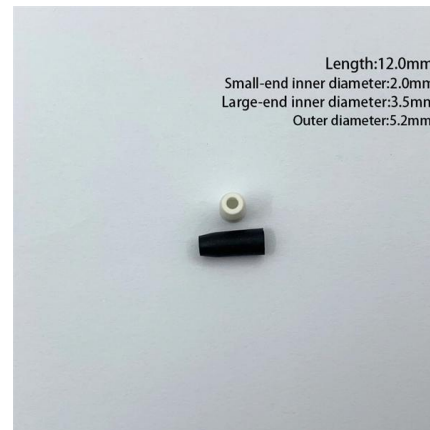
WebiTelecomms Cabling

## 100G QSFP28 Cable and Transceiver Modules Data Sheet , FS

It uses single-fiber bi-directional technology to transmit different wavelengths over a single fiber. Multiplexing and demultiplexing of the eight wavelengths are managed within the device.

## Comprehensive Guide to 100G BIDI QSFP28

Unlike traditional transceivers that require two fibers (one for transmitting and one for receiving), the 100G BIDI QSFP28 uses bidirectional



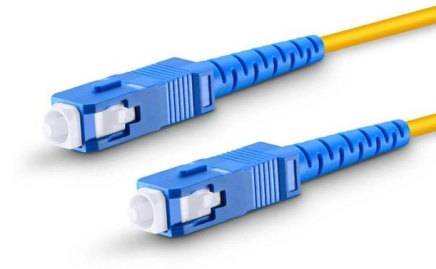
## Optical Transceiver Buying Guide: SFP/QSFP Explained for

Understanding Fiber Compatibility: Single-Mode vs Multimode The choice between single-mode fiber (SMF) and multimode fiber (MMF) directly impacts the optical transceiver type: Multimode



## The Ultimate Guide to QSFP Cables

For example, a QSFP-100G-LR4-S transceiver uses four 25G lanes multiplexed over single-mode fiber to achieve 100G line rate, as explained in



## 40/100G Four-Channel Small Form (QSFP) Optical Transceivers

OptixCom's 40 Gb/s QSFP+ is a 4-lane parallel pluggable fiber optics transceiver designed with advanced 850 nm VCSEL laser arrays and high speed electronics to achieve the optimum

## Cisco 400G Digital Coherent BiDi CFP2 Data Sheet

Cisco is now offering the new Cisco 400G Digital Coherent BiDi CFP2 capable of supporting single-fiber bidirectional coherent transmission.



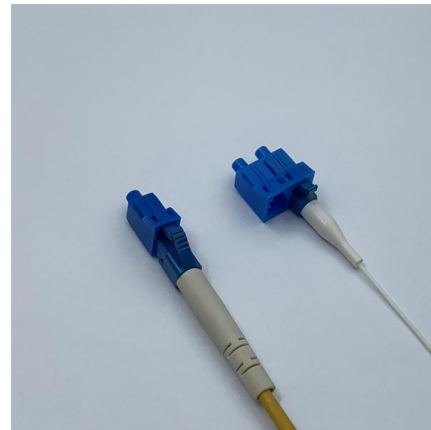
## 100G QSFP28 Cable and Transceiver Modules Data Sheet , FS

QSFP-DR-100G The QSFP-DR-100G Module supports link lengths of up to 500m over a standard pair of G.652 Single-Mode Fiber (SMF) with duplex LC connectors. The 100 Gigabit Ethernet signal is



### **100G BiDi QSFP28 SR1.2 150m , Single Fiber , EDGEOPTIC**

Our products go through strict testing and follow ISO 9001:2015 certified processes to ensure reliable, consistent quality you can count on. The EDGEOPTIC BIDI-100G-QSFP28-151 is a



### **40G QSFP+ SR BIDI 850nm/910nm 100m Module**

QSFP 40G SR BIDI is a transceiver for 40 Gigabit Ethernet Applications, supports transfer over 100m, IEEE 802.3ba-2010, 850nm/910nm, QSFP MSA - AscentOptics.

### **Arista 100G Transceivers and Cables: Q& A**

Arista's 100G connectivity solutions include copper cables and Active Optical Cables (AOCs) to enable cost effective short reach options, as well as a wide range of optical transceivers in QSFP form





## Contact Us

---

For datasheets, pricing, or custom telecom energy solutions, please visit:  
<https://koskolong.co.za>