



Adam Tas Corridor Energy

Changing Steel Cable Tray National Standard





Overview

NEMA VE1: National Electrical Manufacturers Association (partnered with CSA) Standard for Metal Cable Tray Systems. Comments or proposals for revisions on any part of the standard may be submitted to CSA Group or NEMA at any time. The Cable Tray ng standards, performance standards, test standards and application in this document have been tested extens ompetent professional en completely installed, without damage either to conductors or. This publication is intended as a practical guide for the proper and safe* installation of cable ladder systems, cable tray systems, channel support systems and associated supports.



Changing Steel Cable Tray National Standard

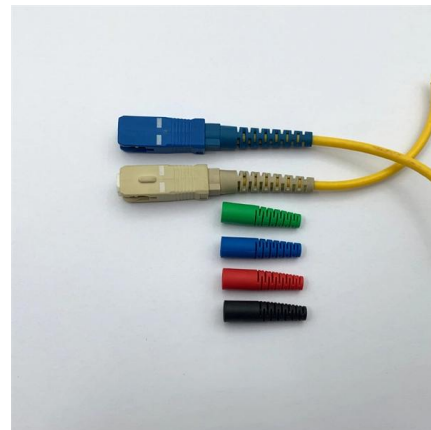


2005

During severe fire conditions, steel or stainless steel cable tray will remain intact and provide support longer than aluminum or fiberglass reinforced plastic cable trays.

Essential Cable Tray Standards: Your Guide to Compliance & Safety

NFPA 70: The National Electrical Code (NEC) includes regulations related to the installation of cable trays, providing guidelines on placement, grounding, and support. Design Considerations When



CABLE TRAYS GENERAL INFORMATION AND

Cable tray systems are to be installed so they are accessible. If possible 300mm minimum should be left above or between installed systems to allow for cable

Cable Tray Technical Guide A practical guide to product selection and

A practical guide to product selection and



installation This guide for engineers and installers has been developed by ABB as a practical reference regarding cable tray characteristics, installation, and



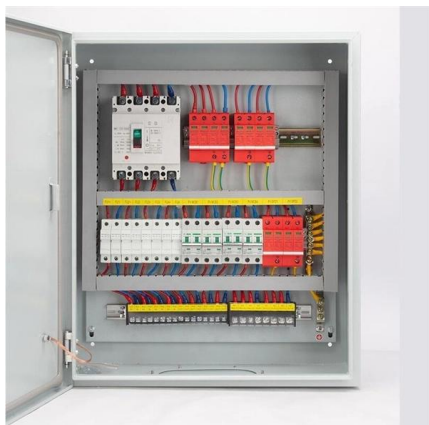
Cable Tray Standards

NEMA VE1: National Electrical Manufacturers Association (partnered with CSA) Standard for Metal Cable Tray Systems. NEMA VE2: National Electrical Manufacturers Association



Cope Ladder Master Spec

Cable Tray Hold Downs - Cable tray supported on standard 1-5/8 inch strut shall be held down with Cope style hold-down brackets. Such as the 9131 series for ladder type cable trays and 90XX series



Best Practice Guide to Cable Ladder and Cable Tray Systems

This guide covers cable ladder systems, cable tray systems, channel support systems and associated supports intended for the support and accommodation of cables and possibly other electrical



Installations , Cable Tray Institute

The Cable Tray Institute (CTI) was founded in 1991 to support the cable tray industry by engaging in research, development, education, and the dissemination of

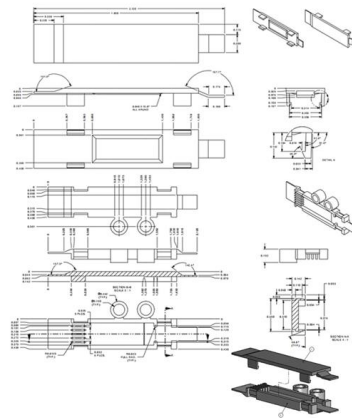


Cable Tray Systems: Requirements and Best Practices

Comprehensive guide to cable tray systems requirements: tray types, materials, loading, supports, bonding, routing, and best practices for safe electrical cable management.

Cable Tray Materials Standard: Global Compliance Guide

China: National Standards for Cable Tray Materials China's cable trays primarily use Q235A and Q235B steel: Q235A meets the national GB/T 700



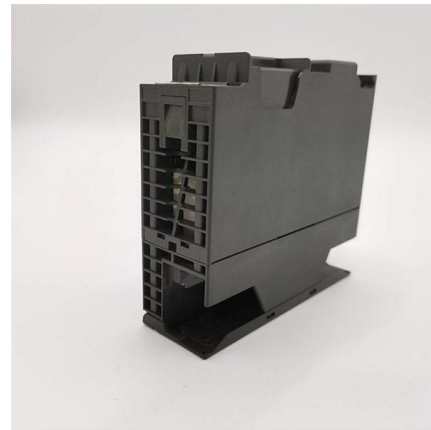
Document DICOS

This standard specifies the requirements for metal cable trays and associated fittings designed for use in accordance with the Canadian Electrical Code (CE Code), Part I, and the National Electrical Code®



Explaining NEC Article 392 on Cable Trays

NEC Article 392 explains cable trays, their components, appropriate wiring methods for cable trays, and instances where they are and are not

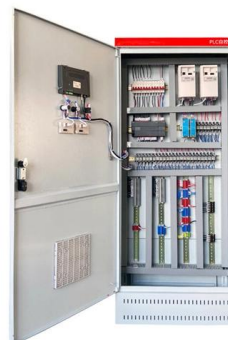


Mechanical Support and Assembly Services

We facilitate global market access and help you address safety and compliance through testing and certification of conduit, cable trays, metallic and nonmetallic

INFORMATION ON STANDARDS FOR CABLE TRAYS - K?raç Metal

NEMA VE1: Specifies requirements for metal cable trays and associated fittings designed for use in accordance with the rules of Canadian Electrical Code and the National Electrical Code.





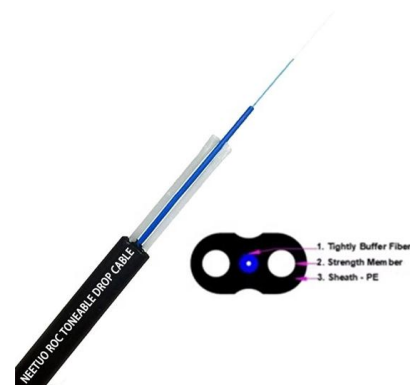
Installation Standards of Cable Trays

Cable Tray Installation Standards: In the National Electrical Code (NEC®) guidebook, section 392, the instructions and specifications for installation are



Best practice guide to cable ladder and cable tray

Cable ladder and cable tray systems The following recommendations are intended to be a practical guide to ensure the safe and proper installation of



CABLE TRAY

This standards publication was developed by the NEMA Metal Cable Tray and Nonmetallic Cable Tray Sections. Section approval of the standard does not necessarily imply that all section members voted

Codes and Standards , Cable Tray Institute

The Cable Tray Institute is making available the current edition of this practical guide for the proper installation of aluminum or steel cable tray systems. These guidelines will be useful to engineers,



Standard for Installing Metal Cable Tray Systems

Metal cable tray systems for power communications cabling shall be installed in accordance with NECA/NEMA 105, Standard for Installing Metal Cable Tray Systems (ANSI).



Cable tray manual

INTRODUCTION The B-Line series Cable Tray Manual was produced by our technical staff. We recognize the need for a complete cable tray reference source for electrical engineers and designers.



Cable Tray Technical Guide A practical guide to product selection and

In designing supports for a cable tray system, consideration should be given to the loads associated with future cable additions and any additional loading that may be applied to the cable tray system (e.g.,





Cable Tray Materials Standard: Global Compliance Guide

Get a complete guide to cable tray materials standards in China, the U.S., the EU, India, Australia, the Middle East, and more. Ensure compliance and

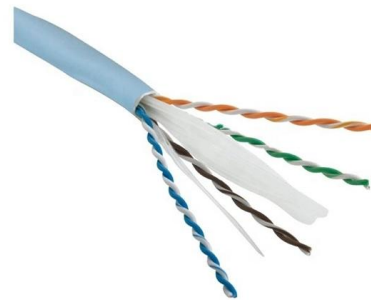


Cable Tray

Cable Tray Cable trays are mechanical support systems that provide a rigid structural system for electrical cables, raceways, and insulated conductors used

CABLE TRAY INSTITUTE

The Cable Tray Institute (CTI) was founded in 1991 to support the cable tray industry by engaging in research, development, education, and the dissemination of



cable tray system

cable tray systems are manufactured in accordance with the precise standards laid down by the National Electrical Manufacturers Association (NEMA). Thus ensuring standardisation of



Best Practice Guide to Cable Ladder and Cable Tray Systems

This publication is intended as a practical guide for the proper and safe* installation of cable ladder systems, cable tray systems, channel support systems and associated supports.



NEC Article 392: Cable Tray Systems

It provides rules for acceptable wiring methods that can be

Contact Us

For datasheets, pricing, or custom telecom energy solutions, please visit:
<https://koskolong.co.za>