



Adam Tas Corridor Energy

Characteristics of Single-Mode Fiber Loss



Network Cabinet & Rack





Characteristics of Single-Mode Fiber Loss

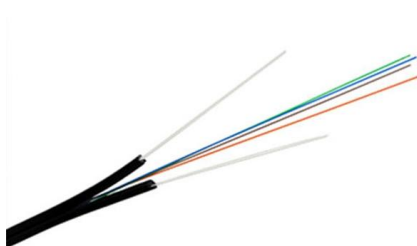


STUDIES ON SINGLE MODE FIBER CHARACTERISTICS

communication systems, single mode fibers are being extensively used due to its low dispersion low loss and high bandwidth. The most ideal single mode fibers, for the purpose of communication, is the step

LC-MTRJ Fiber Patch Cable, Singlemode 9/125 OS2, Duplex

Combining the reliability of the MTRJ connector with the LC connector's highly favored singlemode capabilities, the LightWave MTRJ-LC Singlemode OS2 Fiber Optic Patch Cable is a perfect



Everything You Need to Know About Single Mode Fiber

Single-mode fiber attenuation coefficient will directly affect the transmission distance and system cost, in the conventional campus network, metro network scenarios,

(PDF) Indepth Study of Single mode Optical Fibre

Single-mode is a transmission system that uses light as the medium in the optical fiber, and only



one index of non-reflected light propagates along the

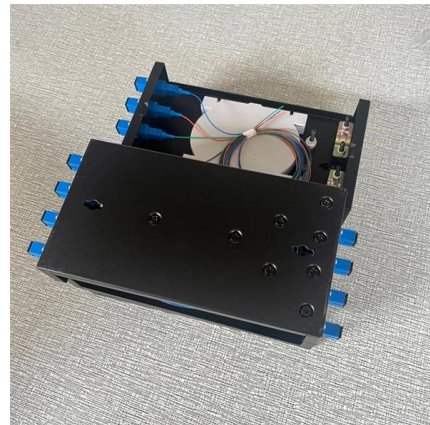


The Ultimate Guide to Single Mode Fiber

In this comprehensive guide, we will explore the principles, characteristics, and applications of single mode fiber, as well as best practices for designing and implementing single mode fiber networks.

Differences Between G.652, G.655, and G.657 Fiber Types

3. G.657 Fiber (Bend-Insensitive Fiber) Designed for tight-radius applications such as FTTH and premises routing. Key characteristics: Trench



Single-mode Fibers

Single-mode fibers support only one guided mode per polarization direction, ensuring a constant output beam profile.



Ch. 2 final2

When the fiber loss and nonlinearity are neglected, a single-mode optical fiber can be considered as an all-pass filter with nonlinear phase response, and the corresponding transfer function can be written as



Broadband single-polarization single-mode low confinement loss

In this paper, a hollow-core anti-resonant optical fibre containing a semi-elliptical nested tube is proposed, which has the characteristics of single-polarization, large bandwidth, single-mode

The Ultimate Guide to Single Mode Fiber

Learn how to harness the power of single mode fiber to enhance your telecommunications infrastructure, improve data transfer rates, and increase network reliability.



What Is Single Mode Fiber and How Does It Work

Single Mode Fiber (SMF): The ultimate solution for long-distance, high-bandwidth, low-loss fiber optic communication. Discover its advantages over



Single-Mode Fibers for High Speed and Long-Haul Transmission

In the fourth section, splice loss considerations and issues are discussed, along with some other practical benefits that accrue from the use of high-performing fibers with low attenuation and large



Understanding Fiber-Optic Cable Signal Loss, Attenuation, and

To determine the power budget and power margin needed for fiber-optic connections, you need to understand how signal loss, attenuation, and dispersion affect transmission. The uses

Bend-Insensitive Fiber - What Is It? - trueCABLE

Discover the benefits of bend-insensitive fiber for reducing stress and bending loss in optical fiber. Learn about its design, applications, and





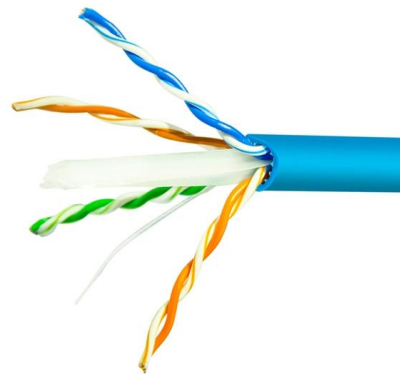
Single-Mode-Fiber Design for Low Latency and Low Loss

Low-latency transmission is necessary for optical transmission systems, and a reduction in propagation delay of 1 ms in an optical fiber is effective. We investigated the tradeoff between



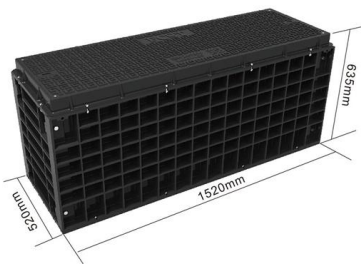
Single Mode Fibers

As single-mode transmissions avoid modal dispersion, modal noise, and other effects that occur with multimode transmissions, single-mode fibers can carry signals at considerably higher speeds as



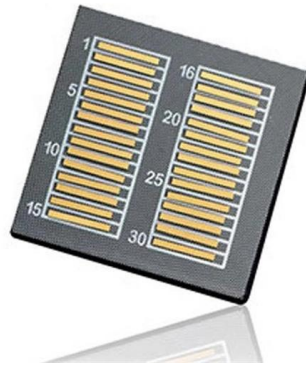
Single-mode Fibers

We explain the criterion for single-mode guidance, the influence of the core size, launching light into a single-mode fiber, and how to achieve large mode areas.



Fiber Optic Terminology & Definitions , Fiber Terms Guide

Attenuation: The reduction in optical power as it travels along a fiber, usually expressed in decibels (dB). Attenuation Coefficient: A characteristic of the



Exploring the Intricacies of Single-Mode Fiber Optic Cable

As single-mode fiber optics aids the evolution of modern technologies, there is an ever-increasing need to understand its role and structure. This blog intends to explain the specifics of

Single-Mode Optical Fiber

Distributed fiber optic sensors are made using optical fibers. The optical fibers used for SHM include single-mode and multi-mode fibers . Single-mode fused silica fibers are often adopted because



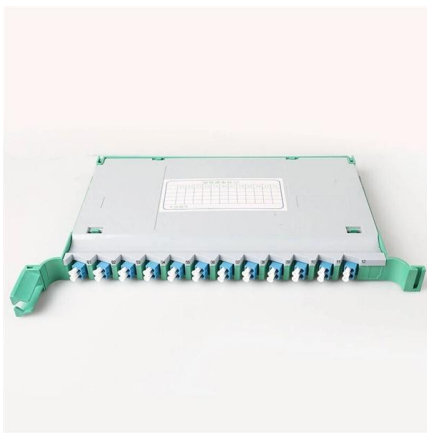
Single-Mode Optical Fiber

The properties of LP 01 mode were measured with a standard single-mode fiber spliced to the ends, and the properties of LP 11 mode were measured by launching into LP 11 mode via an in-fiber long period



SC/APC Singlemode Fiber Pigtail - Procurement Guide

When it comes to high-performance FTTH (Fiber to the Home) network installations, SC/APC Singlemode Fiber Pigtail stands as a vital component in



Fiber Optic Cable Types Explained

Our comprehensive guide to types of fiber optic cables. Learn all about the differences between single mode and multimode cables, as well as the various

Discover Europe's digital cultural heritage , Europeana

Hier sollte eine Beschreibung angezeigt werden, diese Seite lässt dies jedoch nicht zu.



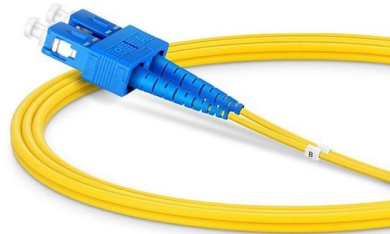
Single Mode vs Multimode Fiber: A Complete

Understand the difference between fibers: single mode offers long-distance, high bandwidth, while multimode suits short runs and lower costs.



ITU-T Rec. G.652 (11/2009) Characteristics of a single-mode optical

This Recommendation describes a single-mode optical fibre and cable which has zero-dispersion wavelength around 1310 nm and which is optimized for use in the 1310 nm wavelength region, and



Single-Mode Optical Fiber

ITU Standards for Single-mode Fibers: To facilitate fiber optic communications, the International Telecommunications Union (ITU) has created

(PDF) ANALYZING THE OPTIMUM LOSS AND

In this paper we studied the dispersion and loss characteristics of several types of optical fiber through a simulation study. The single mode step





Single-Mode-Fiber Design for Low Latency and Low Loss

We experimentally evaluated the Rayleigh-scattering-loss and imperfection-loss characteristics of pure silica core fibers with smaller radius and fluorine (F)-doped core fibers.

Contact Us

For datasheets, pricing, or custom telecom energy solutions, please visit:
<https://koskolong.co.za>