



Adam Tas Corridor Energy

Check the switch access ports





Check the switch access ports

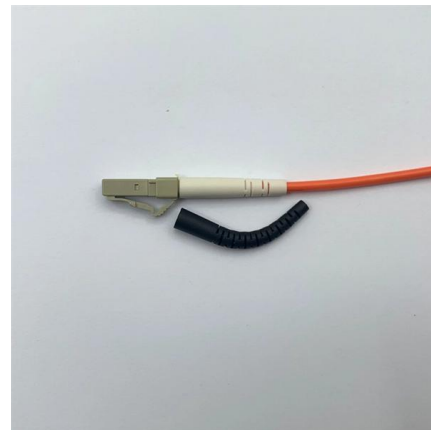


how to find access port in L2 switches..

? 08-25-2008 08:12 PM - edited ?03-06-2019 12:59 AM how to find access port in L2 switches.. Trunk port can be identified by sh int trunk.. how to find access port in L2 switches..

Configuring access ports on Cisco switches - IT

Configuring access ports on Cisco switches Let's and assign them to a specific VLAN. Let's begin by looking at basic VLAN configuration. Image



Cisco CLI Switch Command Cheat Sheet for 2025

To prevent unauthorized access to your LAN, it is usually

What is the Access Port? How to Configure Access Port

In this video tutorial, I will show you what access and trunk ports are. And how to configure the



Cisco switch port.



How to configure and assign a Cisco switch access port to a VLAN

Access ports in switches are normally used to connect end devices like workstations and printers. Access ports belong to only a single VLAN and do not provide any identifying marks on the Ethernet

Configure Port to VLAN Interface Settings on a Switch

This article provides instructions on how to configure an interface VLAN as an access or trunk port on your switch through the CLI.



How to Configure Access and Trunk Ports for Beginners

In this Cisco Tech Talk, we provide a beginner-friendly guide on how to configure access and trunk ports on Cisco Catalyst switches. Learn the





How to Check If a Port Is Open on Windows, Mac, and Linux

Are you looking for a quick way to check if a port on your router or firewall is open? It's actually pretty simple. The right way to do it just depends on whether you're using a Mac or PC and what kind of port you're checking. We'll walk you through how to do it step-by-step on Windows, macOS, and Linux.



Access and Trunk Ports

Access ports are used to connect end devices, such as PCs, printers, and servers, to the switch. These ports are simple to configure and provide a direct connection to the network.

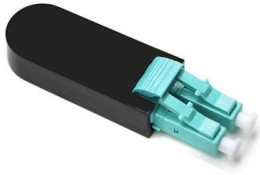
Port Configuration - Two Byte Blog

An access port is a port where traffic sent and received is not tagged. A common use case for access ports is endpoint devices such as workstations, printers etc.



Open Port Check Tool -

A free open port check tool used to detect open ports on your connection. Test if port forwarding is correctly setup or if your port is being blocked by your firewall or ISP.



Troubleshooting Common Issues with Switchport Mode

show port-security interface - To check for port security violations. show spanning-tree - To verify STP status on the interface. By



What is Access Port in Switch?

Learn exactly what the Access port is, which we often hear about in switch network devices. Discover how to set up these ports in your LAN!

Configuring Access and Trunk Interfaces

To optimize the performance on access ports, you can configure the port as a host port. Once the port is configured as a host port, it is automatically



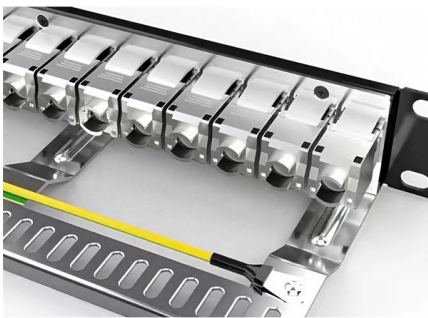


How to configure the ports of a Cisco switch, whether

Read on to learn how. Access ports and trunks: everything you need to know about how they work. When configuring a Cisco switch, it's important to understand the

Easy Ways to Enable a Port on a Cisco Switch: 8 Steps

To activate or enable a port on your Cisco Switch, connect to your Switch and type "show interface status" to see which ports are enabled and which are disabled. Type enable, then use configuration commands to set up the port you want to enable.



Useful Cisco Switch Verification Commands

Cisco switch verification commands are simple tools that help you check if your switch is working. They let you see if the ports are up, if the VLANs

Configuring access ports on Cisco switches - IT

In this lesson we begin learning how to configure VLANs (Virtual Local Area Networks) on Cisco switches. More specifically, we look at how to



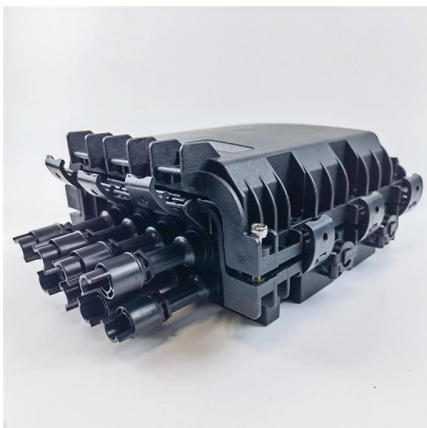
Configuring access & trunk ports

This article describes how to configure access and trunk ports on a Cisco switch. How to verify the commands is also shown in the article.



How to Check Open TCP/IP Ports in Windows

Whenever an application wants to make itself accessible over the network, it claims a TCP/IP port, which means that port can't be used by anything



Description of Switchport Mode Access vs Trunk Modes

In this article we will examine Access Mode and Trunk Mode ports on Cisco switches. This is the command that configures the port of the switch in Access



Configuring Access and Trunk Interfaces

Configuring Access and Trunk Interfaces Ethernet interfaces can be configured either as access ports or trunk ports. Trunks carry the traffic of multiple



Configuring VLANs on Cisco Switches

Master configuring VLANs on Cisco switches. Learn to configure Access and Trunk ports, and Native VLANs and Allowed VLAN Lists. Learn to verify with show

How to configure the ports of a Cisco switch, whether

In this tutorial, you'll learn how to configure Cisco switch ports in both trunk and access mode, allowing you to optimize network management and ensure stable



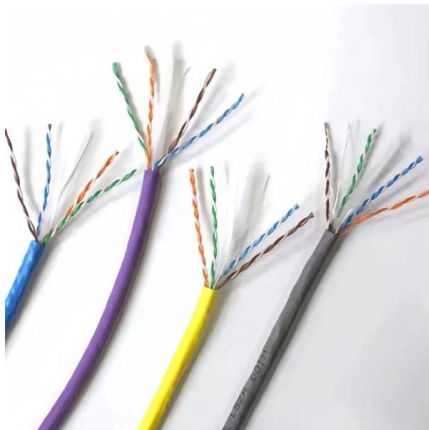
Access Port vs Trunk Port Explained: Cisco CLI + EVE

Access Port: Connects end devices (PCs, printers, IP phones) and belongs to a single VLAN. It sends and receives untagged traffic. Trunk Port: Connects switch



Description of Switchport Mode Access vs Trunk Modes

In this article, we will discuss a couple of core concepts of network switching which are about Access and Trunk ports and how to configure them using "switchport



Different Types of Switch Ports

Network devices connect to a switch through its switch ports. Switch Ports which are physical opening where data cables are plugged in to connect the devices. Switch port type should

Port Checker

Port Checker is a simple tool to check for open ports and test port forwarding setup on your router. Verify and diagnose connection errors on your computer.





Contact Us

For datasheets, pricing, or custom telecom energy solutions, please visit:
<https://koskolong.co.za>