



Adam Tas Corridor Energy

Checking optical port attenuation parameters of H3C switches





Overview

Run the following command to view the Digital Diagnostic Monitoring (DDM) data of the optical module: `show transceiver diagnosis interface <interface-type> <interface-number>` The output provides real-time diagnostic metrics and their corresponding threshold ranges. Reading optical module information during use helps understand its real-time operating status, allowing you to locate the cause of link abnormalities more quickly. The following uses the Moduletek QSFP-40G-LR4 module connected to an H3C S6820 switch as an example to introduce how to read. System view or Ethernet port view ratio: Specifies the allowed maximum ratio of the broadcast traffic to the total bandwidth on one or each port. General guidelines IMPORTANT: To prevent an issue from causing loss of configuration, save the configuration each time you finish configuring a feature. Today ETU-Link will introduce the matching scheme for H3C S5810 series switch and optical module. Perform basic operations including display, debug, file management, FTP, Telnet, clock setting, and reboot. Add the specified port to the current VLAN Configure the link type of the port as Trunk type Allow the specified VLAN to pass through the current Trunk port Set the default VLAN for the trunk port Configure the link type of the port as Hybrid View the VLANs that exist on the current switch View the.



Checking optical port attenuation parameters of H3C switches



H3C S3100 SERIES COMMAND MANUAL Pdf Download

Use the `undo mac-address max-mac-count` command to enable a switch to learn MAC address in a VLAN. By default, a switch learns MAC addresses in any

View the Optical Module Status on a Switch through the

This article provides instructions on how to view the Optical Module Status on your switch through the Command Line Interface (CLI).



H3C S6890 SERIES TROUBLESHOOTING MANUAL Pdf Download

View and Download H3C S6890 Series troubleshooting manual online. S6890 Series switch pdf manual download.

How To Read Optical Module Information On H3C Switches

The following uses the Moduletek QSFP-40G-LR4 module connected to an H3C S6820 switch as an



example to introduce how to read information of the connected optical module on an H3C switch.



How to Master H3C Device Switch Commands: A

View the ports contained in a specific VLAN. View the VLAN information of a specific port. Enable device STP feature. Disable the STP feature

Support

Configuring port security Overview Port security combines and extends 802.1X and MAC authentication to provide MAC-based network access control. This feature applies to networks that require different



H3C All-Optical Network Technology White Paper-6W100

In contrast, the EPON-based POL solution leverages the EPON OLT's enhanced Ethernet forwarding and switching capabilities. iOptic network devices H3C provides an extensive array of iOptic Ethernet



Support

H3C S3100-52P Command Manual-Release 1602 (V1.01) Home Support Switches H3C S3100 Switch Series Reference Guides Command References H3C S3100-52P Command Manual



Support

You can specify multiple contiguous ports with the parameter to. interface-type specifies port type and interface-number specifies port number. For more information, see the parameter item for the

H3C S3600 SERIES SWITCH OPERATION MANUAL , ManualsLib

Page 24: Chapter 2 Habp Configuration Operation Manual - 802.1x H3C S3600 Series Ethernet Switches-Release 1510 Chapter 2 HABP Configuration Chapter 2 HABP Configuration 2.1



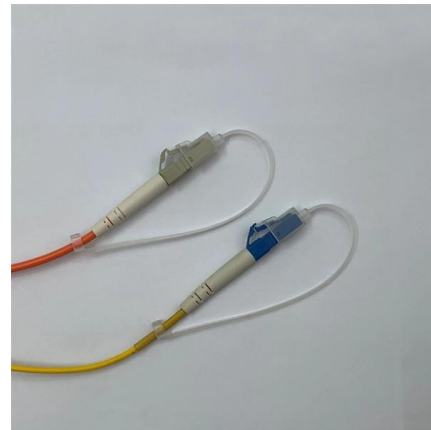
Support

Use the broadcast-suppression command to define the broadcast traffic ratio allowed on one port or each of the ports. Use the undo broadcast-suppression command to restore the default ratio. | When



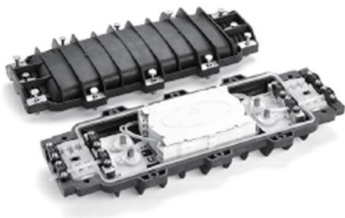
Support

Setting DBA parameters
Setting the maximum number of ONU E1/UNI/VoIP ports that can be queried by SNMP
Configuring CDR
Configuring EPON alarms
Display and maintenance commands for the OLT



Optical Transceiver Manufacturer, H3C Switch

H3C switch configuration description: it can complete the binding function between PC1's IP address, MAC address and port E0 / 1. Due to the use of port



How To View Port Status And Optical Module Information On Cisco Switches

1. Check Optical Module and Port Status
Execute the following command to view detailed interface and optical module status: `show interface` The





H3C Devices CLI Reference

To use an alias for a command that has parameters, you must specify a value for each parameter. If you fail to do so, the system informs you that the command is incomplete and displays the command

Support

| Optical port (including Combo optical port) does not support VCT (virtual-cable-test) function. | Combo electrical port supports VCT function only when it is in UP condition (using undo shutdown



Support

1 Connecting your switch to the network This chapter describes how to connect your switch to a network. The first time you access a switch you must log in through the console port. On the switch,

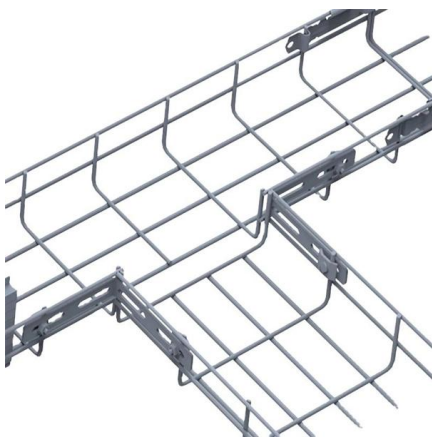
H3C Device Optical Copper Multiplexing Port Configuration Guide

In H3C network devices, a combo port (optical-copper multiplexing port) is a multifunctional interface that integrates two physical media: optical fiber and copper cable.



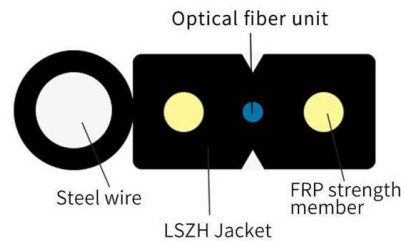
Optical Transceiver Manufacturer, H3C Switch

Due to the use of port parameters, the port will be taken as a reference, that is, at this time, port E0 / 1 only allows PC1 to access the Internet, while PC computers



Support

Preface The H3C S5820X& S5800 documentation set includes 12 configuration guides, which describe the software features for the S5820X& S5800 Series Ethernet Switches and guide you through the



H3C S5830 Switch Series Configuration Examples

The authentication port (UDP) used by RADIUS servers is 1812 according to standard RADIUS protocols. However, the port (UDP) is set to 1645 on an H3C device that functions as the



Support

Home Support Switches H3C S3600 Switch Series Reference Guides Command References H3C S3600 Command Manual-Release 1602 (V1.02)



How To Turn Off Alarms For Third-Party Modules On H3C Switches

H3C switches perform authentication on inserted optical modules. By default, a large number of alarm messages will be generated if the module is verified as non-H3C original. H3C provides CLI

H3C S5830 Switch Series Configuration Examples

However, the port (UDP) is set to 1645 on an H3C device that functions as the RADIUS authentication server. You must specify the authentication port as 1645 in the RADIUS scheme on



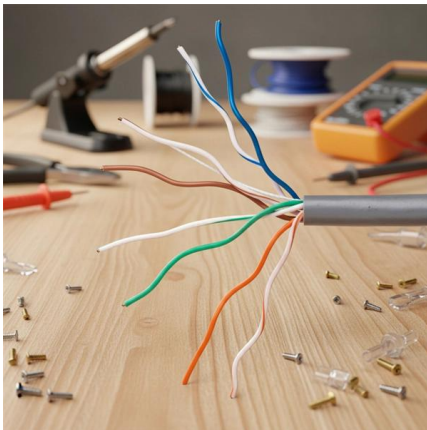
Support

Home Support Switches H3C S7500 Switch Series Reference Guides Command References H3C S7500 Series Command Manual (Release 3100 Series)- (V1.04) Table of Contents 00-1Cover 01-CLI



H3C S5130-HI Switch Series Troubleshooting Guide-6W101

H3C S5130 Series Switches, When you troubleshoot xxx, follow these general guidelines: · To help identify the failure cause, collect system and configuration information, including: ? Symptom, time of



Support

Table of Contents 1 Port Basic Configuration Commands Port Basic Configuration Commands broadcast-suppression copy configuration description display brief interface display interface display

H3C Switch Command Mastery: Streamlined

This article provides a hands-on guide to 50+ essential H3C switch commands, revealing hidden shortcuts and best practices derived from real-world





Support

1 Port Correlation Configuration The term switch in this document refers to a switch in a generic sense or an access controller configured with the switching function unless otherwise specified.
When

Contact Us

For datasheets, pricing, or custom telecom energy solutions, please visit:
<https://koskolong.co.za>