



Adam Tas Corridor Energy

Circuit of power distribution box





Circuit of power distribution box



What does a power distribution box do ?

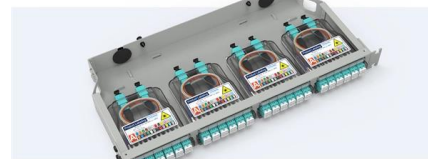
The main function of the distribution box is to receive power and distribute it to various circuits. It can protect circuits, regulate voltage, and isolate and control

How Does a Power Distribution Box Work

Learn how a power distribution box works step by step--from incoming power to circuit protection and smart monitoring--for safe, efficient electricity delivery.

Pre-Terminated Patch Panel

- Multi-application support
- Flexible configuration
- Modular design



Cable Gland Plug
28mm Cable Gland Plug



MPO LC up to 96 cores
MPO direct connection 48 ports



Mounting Bracket
Semi-open mounting holes

IEC Final Power Distribution Equipment Catalog

Ensure precise circuit protection with IEC final distribution solutions supporting safety and operational continuity.



Portable Power Distribution Box Structure and Working

In terms of working principle, electric energy is introduced from the external power supply



through the cable into the terminal block, connected to the



Shop Power Distribution Products , City Electric Supply

Shop power distribution equipment from disconnect switches to transformers. Safe, efficient solutions from City Electric Supply for every application.



Power Distribution Boxes Explained Simply

Where Power Distribution Boxes Are Used Power distribution boxes are essential in many settings, from homes to hospitals. Here's a look at some



Circuit Breaker Distribution Box Electrical, Outdoor

Insulation Design This distribution box is Made of high quality plastic material, durable and sturdy. This distribution box is designed for 5/8/12/15/18/24 ways





Distribution Box Guide: Types, Components & Solutions

Distribution box 1-phase: Commonly used in residential applications, these are designed for lower power loads and typically feature fewer circuit



Explore Power Distribution Box Types and Functions

You can see how many circuits are on the periphery of the box to divide the circuit. 8 circuits and below will basically be used for home use, and



Distribution Box: Types and Functions , Axis-Electricals

A distribution box ensures that electrical supply is distributed in the building, also known as a distribution board, panel board, breaker panel, or electric panel. It is



Distribution Boxes Explained: Types, Functions, and

Beyond simple power distribution, these units provide essential safety measures that protect against electrical hazards like short circuits and power



Distribution Boards

Distribution boards, often referred to as electrical panels or breaker boxes, serve as the nerve center of any electrical system. Here we explore the crucial parts of a distribution board and gain insights into



Understanding Distribution Boxes: Your Guide to Power

A: A junction box is primarily used to connect electrical wires, while a distribution box is designed to distribute power to various circuits. The distribution

Power Distribution Boxes Explained Simply

Learn what a power distribution box is, how it works, key components, types, and why it's vital for safe and efficient electrical systems.



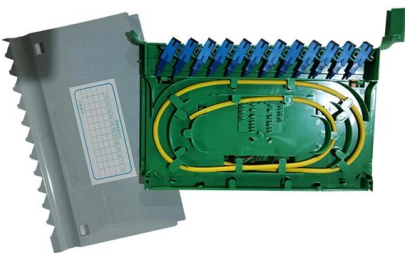


Power Distribution Boxes Explained Simply

A power distribution box is a key part of any electrical system. It takes electricity from the main source and safely sends it to different circuits in a home,

Distribution Boxes Explained: Types, Functions, and

Learn about distribution boxes, their types, functions, and safety features to ensure efficient and secure electrical power distribution in any building.



The Complete Guide to Distribution Box: Installation, Types & More

Home distribution boxes typically handle single-phase power supplies and contain 6 to 24 circuits. They include standard circuit breakers for lighting, outlets, and major appliances like water

Understanding Distribution Boxes: A Comprehensive Guide

Learn what a distribution box is, its types, and how to choose the right one for your project. Includes clear examples and expert tips.

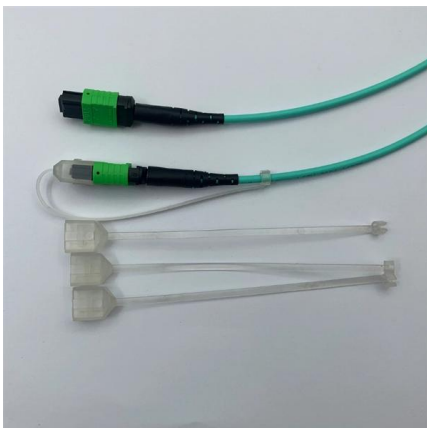


Understanding Distribution Boxes: Your Guide to Power

What are Distribution Boxes and Their Importance? What are Distribution Boxes and Their Importance? Distribution boxes, or electrical junction

Distribution Boxes: Types and Functions

A distribution boxes acts as the load center and main distributor of electrical power within a building. Also called a distribution board, panel board,



Explore Power Distribution Box Types and Functions

Power distribution boxes are used in commercial and residential buildings and are part of the electrical system, also known as switchboards.



What is the Internal Structure of The Distribution Box

What is a Distribution Box? Definition A distribution box is an essential electrical component used to manage and control the flow of electricity

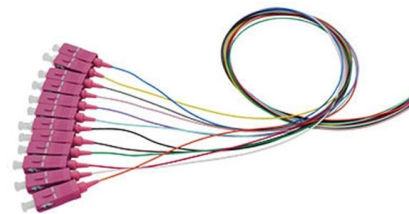


How Does a Power Distribution Box Work

In this article, we'll walk you through the step-by-step process of how power flows through a distribution box, what components are involved, and why each part is

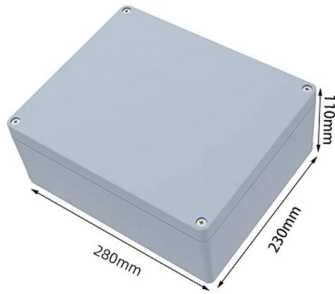
Distribution Box Guide: Types, Components & Solutions

What is a Distribution Box? A distribution box, or DB box, is a circuit breaker enclosure. It is a vital part and central hub of any electrical system. The



How Does a Power Distribution Box Work: A Guide

Learn how a power distribution box works, its role in safely managing electricity, and why it's vital for efficiency in industrial and commercial projects.



Understanding Distribution Boxes: A Comprehensive Guide

A distribution box is an essential device that manages the safe and efficient flow of electrical power throughout different areas of a building or facility.



Contact Us

For datasheets, pricing, or custom telecom energy solutions, please visit:
<https://koskolong.co.za>