



**Adam Tas Corridor Energy**

# **Cold aisle dimensions for railway communication cabinets**





## Overview

---

According to the ANSI/TIA/EIA-942-A standard, the recommended width for a cold aisle is 1,2 meters, which typically corresponds to the size of two double floor tiles. Cold air is supplied via perforated tiles at the front of the cabinets, which is distributed to cabinet by fans. This section includes the specifications for constructing and building out of Telecommunications Equipment Rooms (MDF/IDFs) to be used for supporting telecommunications and other special systems. Upon completion of the installation, a third party field verification firm will independently verify. The Modular system is physically attached to the rack, and features sliding doors with Lexan (polycarbonate) windows. It has aluminum profile roof panels that span the width of the design to accommodate non-uniform rack heights and. Great Lakes is a leading manufacturer of high quality racks, wall mount and free standing enclosures, technical furniture and console systems and accessories for the data, communication, broadcast, sound and security industries.



## Cold aisle dimensions for railway communication cabinets

---

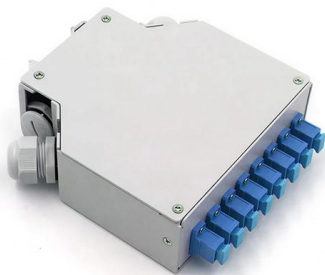


### **cover1 Dhiren 120609 [Compatibility Mode]**

This includes all high voltage electrical installations in the Railway including transmission lines, 25 KV feeder lines, sub-stations, switching stations which although running outside Railway premises, are,

### **Contained hot isle , CONTEG**

Cold air is distributed through perforated tiles in front of each cabinet and drawn into the cabinets by airflow technology.



### **Optimizing Telecommunications Spaces : Sizing**

Telecommunications spaces are the backbone of structured cabling systems in commercial buildings. Proper sizing and layout are critical for functionality,

### **Cold and Hot Aisle Configurations**

Listed are several Aisle/Enclosure configurations to provide different cooling solutions.



## **SPECIFICATION 271100 COMMUNICATIONS CABINETS AND**

Cabinets shall be fully assembled by the manufacturer with the components listed below. Individual component part numbers provided for information only.

### **Catálogo CPD's 2025 CTI\_english**

SINCE 2002 CTI ELECTRONICS specializes in the manufacturing, supply, and installation of hot and cold aisle containment systems (HAC type) and room dividers for data centers, since . We have



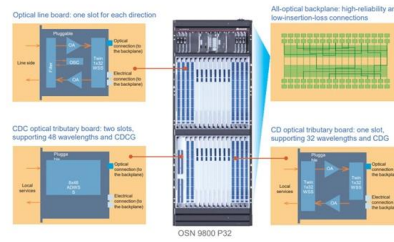
### **Natural Cooling Design for Telecom Cabinet**

Natural cooling with closed cold aisles and smart dampers boosts telecom power systems' efficiency, reliability, and reduces energy costs.



## SMART AISLE

INTRODUCTION Norden Smart Aisle containment System are designed to improve the efficiency of data centres by isolating hot and cold airflow, ensuring optimal cooling and energy management.



## Cold Aisle Containment

Product Description Aisle containment in the data center requires that cabinets are aligned in a hot aisle/cold aisle layout. Containment panels or strips create a

## What are hot and cold aisles in the data center?

In its simplest form, hot/cold aisle data center design involves lining up server racks in alternating rows, with cold air intakes facing one way and the



## Cooling

According to the ANSI/TIA/EIA-942-A standard, the recommended width for a cold aisle is 1,2 meters, which typically corresponds to the size of two double floor



### Requirements for outdoor railway trackside cabinets for

Outdoor cabinets containing a suitably configured air conditioning system to cool built in electronics guarantee reliability and durability for railway

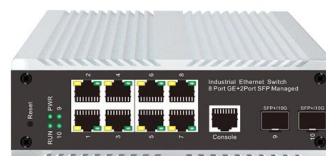


### Data Center Design: Hot Aisle and Cold Aisle Guidelines

? Data Center Design: Hot Aisle & Cold Aisle - Length and Width Guidelines Aisle Length: When racks or equipment cabinets are aligned to form a continuous aisle, the aisle should not

### IMPROVING DATA CENTER EFFICIENCY AND CAPACITY WITH AISLE

Consequently, some offer Hot Aisle Containment solutions while others offer Cold Aisle Containment solutions. Although consumers of a particular manufacturer's cabinets may benefit from the tight



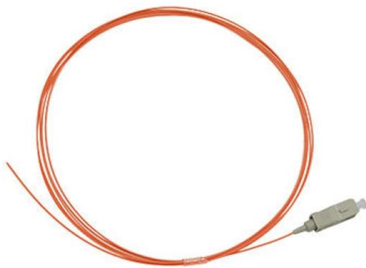


## Aisle Containment Systems Physical Containment Systems

Rows of racks have uniform heights along the total length of the aisle. This solution requires a continuous run, so there cannot be gaps, such as missing cabinets

### Aisle Rack

Aisle Cabinet comes with end-of-row dual sliding doors and ceiling panels that enclose the cold aisle between rows of DataCAB Cabinets to prevent mixing of cold and hot air, optimizing cool air delivery.



### KabinPLUS Aisle Containment Solutions

Specially designed seismic stands are attached below the raised floor together with the dummy aluminium and polycarbonate frames which are adjustable to different

### KabinPLUS Aisle Containment Solutions

Aisle Containment Solution - Cold Aisle Cold Aisle Containment for rack cabinets with single or double sliding doors and sliding roof frame units fabricated out of



### **HOT / COLD AISLE**

In the Hot / Cold Aisle design the airflow is managed at the racks level only. Within the data center / server room no barriers are applied to separate hot and cold air

### **Net-Contain Sliding Door Low Profile Cold Aisle Containment System**

The sliding door low profile aisle containment system shall create a structure including end of row doors and ceiling panels that enclose the cold aisle between rows of cabinets to segregate cold and hot air



### **How to specify the right SISS cabinets for the rail industry**

Considering the critical role of the equipment within SISS cabinets, they must be fit for purpose, robust and adaptable enough for the needs of the





### A Guide to Hot and Cold Aisle Containment for Optimizing Server

Training and Awareness The hot and cold aisle strategy is a proven method for improving cooling efficiency and reducing energy consumption in data centers. By carefully planning the layout of



### Railway Trackside Cabinets And LOC's , Rainford

Trackside Cabinets Trackside cabinets Rainford Solutions Rail Division is an established designer and manufacturer of trackside enclosures, trackside



### Cold Aisle Containment & Hot Aisle Containment

, What is Cold Aisle Containment? Cold Aisle Containment Systems (CACs) are one of the most widely-recognised data centre cooling solutions. By managing air flow, CACS restrict the loss of cold air,



### Net-Contain Sliding Door Low Profile Cold Aisle Containment

Net-Contain™ Sliding Door Low Profile Cold Aisle Containment System for N-Type and S-Type Cabinets

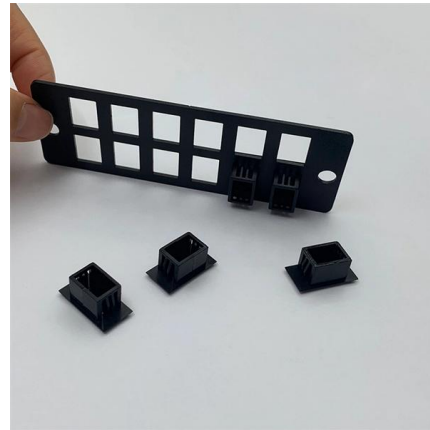


SC connector X 12



## COLD & HOT AISLE CONTAINMENT SYSTEM

Hot aisle containment is made from light duty aluminum profile and thermal insulation PC board, has better heat dissipation performance than cold aisle containment in high



## CHAPTER 3

Creating a Hot-Aisle/Cold-Aisle Layout Because of the front-to-back airflow of the systems, the ideal placement of the cabinets and racks have the systems

## Vertiv SmartAisle Containment

Vertiv Vertiv designs, builds and services mission critical technologies that enable the vital applications for data centers, communication networks, and commercial and industrial environments. We support



## Contact Us

For datasheets, pricing, or custom telecom energy solutions, please visit: <https://koskolong.co.za>