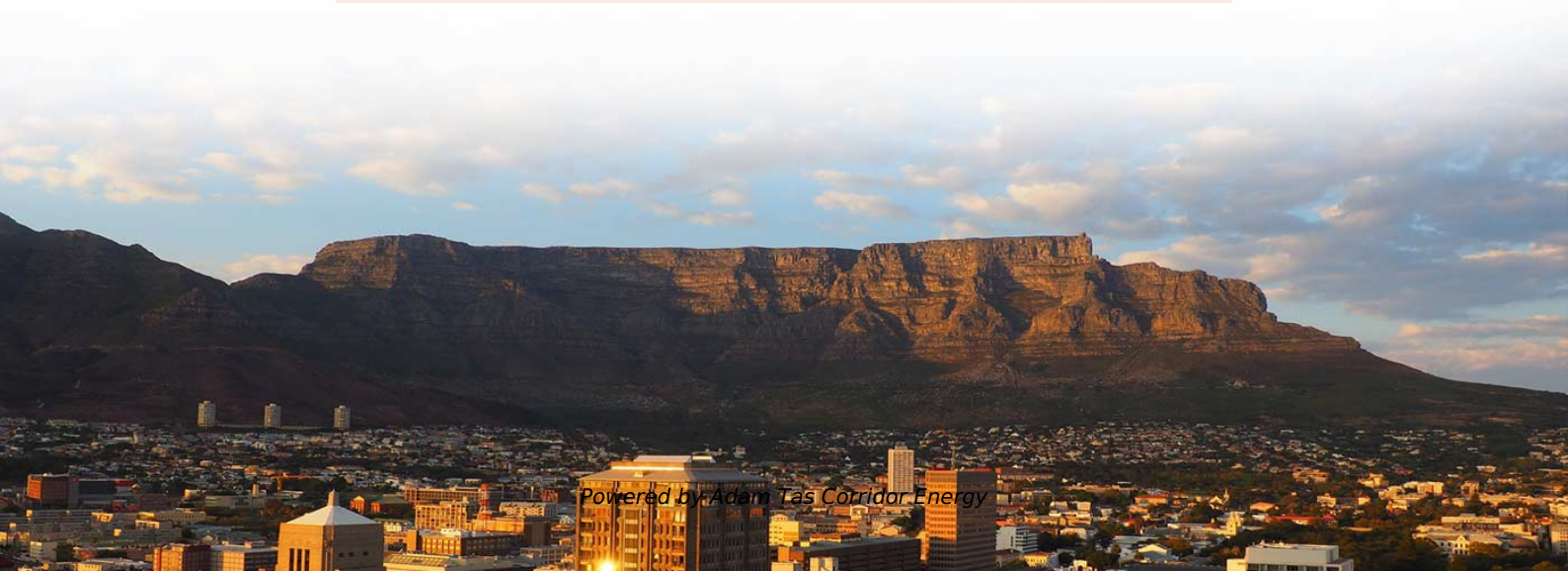




**Adam Tas Corridor Energy**

# **Common parameters of PoE switches**





## Overview

---

PoE switches support a wide range of low-, medium-, and high-power devices, and choosing the right model requires understanding power budgets, port counts, cable requirements, and uplink capacity. PoE does not reduce network speed, does not waste excessive power when proper cabling standards are. This eliminates the need for separate power cables and allows for devices such as wireless access points, IP cameras, VoIP phones, PoE LED. Its technical standards and specifications are crucial to ensure the stability and reliability of the system. Key Benefits of Power over Ethernet Easy Scalability Using additional components such as PoE switches means devices can be added to an existing setup without any hassle.



## Common parameters of PoE switches

---

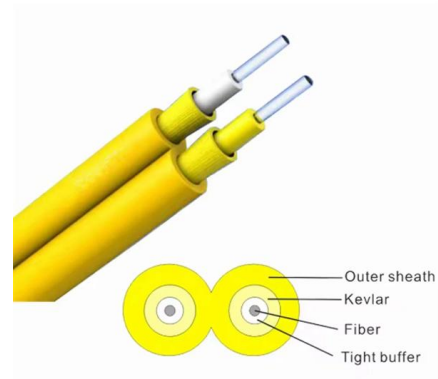


### Teach you to Understand the Important Parameters and Indicators of

Speaking of PoE switches, it is necessary to mention some technical indicators for nominality, such as PoE power supply, backplane bandwidth, packet forwarding rate, line speed forwarding and so on.

### 2024 PoE Switch Quick Reference Guide

We've created a PoE Switch Quick Reference Guide that highlights the key features of each product. Browse our selection of PoE solutions today and discover how D-Link can help you achieve your



### Understanding Power over Ethernet (PoE) Wattage and

Explore PoE wattage, IEEE standards, and power sourcing tips. Learn how to select the right PoE setup for reliable, future-ready network performance.

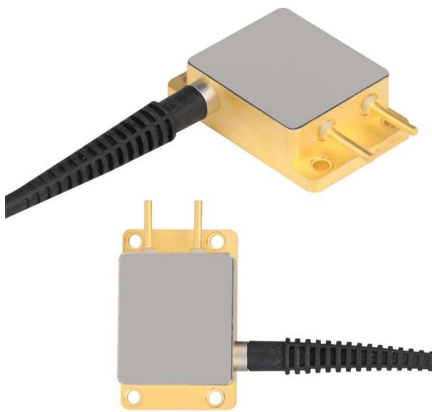
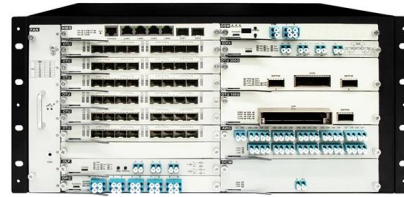


### What is a PoE Switch? Learn PoE Switch Benefits

Learn everything about PoE switches-how they work, their key benefits, common applications,



limitations, and how to choose the right one for



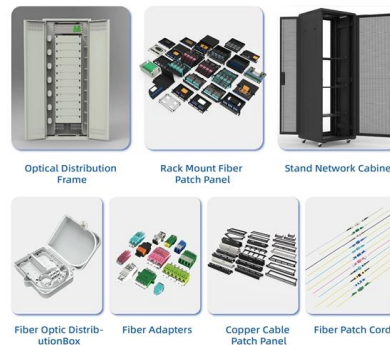
## PoE Power Standards and Technical Parameters

In technical discussions, a common area of confusion among integrators concerns PoE power delivery. This article summarizes the main questions and provides clear answers.

## Understanding PoE, PoE+, and PoE++: A

Power over Ethernet (PoE) technology has revolutionized network deployments by enabling data and power transmission over a single Ethernet cable.

### An Extensive Library of Self-Developed Products



## Overview of Official PoE Standards (And Why)

Overview of Official PoE Standards (And Why Manufacturers Use Different Terminologies) In AV over IP networks, Power over Ethernet (PoE)



## Understanding PoE Switch Standards: A Quick Guide for Your Projects

Power over Ethernet (PoE) technology has become a standard in many industries, simplifying installation and power management for devices like IP cameras, access points, and 4G



## Power Over Ethernet (PoE) , Fluke Networks

The Fluke Networks MicroScanner Cable Verifier is Ethernet Alliance Gen2 PoE certified. LinkIQ takes troubleshooting PoE one step further by placing a load on

- ✓ Slow Axis Aligned (0°) - for standard sensing applications
- ✓ Fast Axis Aligned (90°) - for special modulation applications
- ✓ 45° Axis Aligned - for depolarizer applications



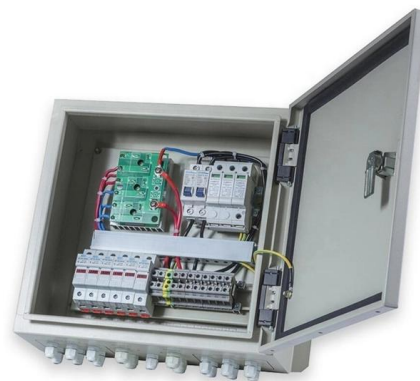
## What is a PoE switch (Power over Ethernet switch)?

A PoE switch provides power and network connectivity over Ethernet cables to access points, security cameras, and other Internet of Things devices



### PoE vs PoE+ vs PoE++ Switch: How to Choose?

This article explains the differences between PoE, PoE+, and PoE++ switches, and how to choose the right type that best suits your needs.



### What is a poe switch and how to select it?

Power over Ethernet (PoE) switches have become a popular solution for businesses looking to provide power and data to devices over a single



### PoE vs. PoE+ vs. PoE++: Power Over Ethernet Guide 2025

Compare PoE, PoE+, and PoE++ standards in this 2025 guide. Learn power limits, device compatibility, and how to choose the right Power over Ethernet setup.





## Understanding PoE Standards and Parameters

Understanding PoE standards and parameters is crucial for designing and maintaining efficient and reliable network infrastructures. This blog delves

## Selecting the perfect PoE switch: an in-depth guide from

PoE switches commonly offer 8, 12, 16, 24, and 48 ports or more for Ethernet cabling and connectivity. PoE switches with 8 to 16 ports typically meet the requirements



## How to Choose the Right PoE Switch: PoE vs PoE+ vs

Discover the differences between PoE, PoE+, and PoE++ standards. This guide explains specs, applications, and how to choose the right PoE switch.

## 6 Essential Facts You Should Know About PoE

This article addresses 6 essential facts about PoE switches: speed, power, and compatibility. It explores IEEE standards and applications to help you

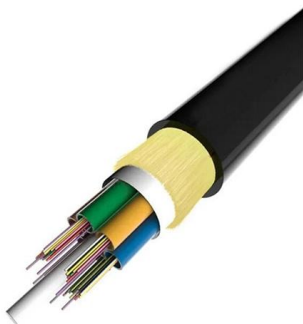


## Understanding PoE Switch Standards: A Quick Guide for Your Projects

However, understanding the different PoE standards and their capabilities is crucial to selecting the right equipment for your needs. In this article, I'll explain the key PoE standards and

### PoE Configuration Guide

These sections provide information about the conditions required for a PoE capable switch to provide power, how the PoE-capable switch identify the power requirement of the powered device, and how



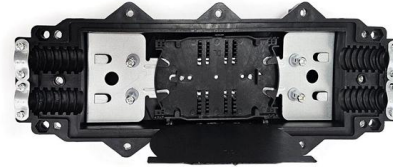
### PoE Switches Explained: Speed, Power, Compatibility

Learn everything about PoE switches - speed, power consumption, device compatibility, PoE standards, installation tips, and how to choose the right



## Challenges and solutions for PoE systems in Ethernet switches

Ethernet switches play an important role in PoE systems, as they power powered-device (PD) loads such as Internet Protocol (IP) phones, IP cameras, and wireless access points and speakers.



## The Definitive Guide To Power Over Ethernet , PoE

The perfect solution for your power-hungry devices, our 24 Port Gigabit Unmanaged PoE Switch delivers reliable and lightning-fast connectivity without the hassle of

## Technical standards and specifications for POE switches

In summary, the technical standards and specifications of POE switches cover power supply, voltage, current, transmission distance, power supply process, equipment compatibility, safety and protection,



## What Is PoE Switch? Where Can You Use It?

What Is PoE Switch? Where Can You Use It? What are the differences between a PoE switch and a regular switch? PoE switches deliver power and data over



## What is Power Over Ethernet (POE)?

A Power over Ethernet switch (POE switch) is a network switch with built-in Power over Ethernet injection. Simply attach other network devices to the



## How To Choose Right PoE, PoE+, And PoE++ Switches?

This article is to introduce how to choose the right PoE, PoE+, and PoE++ switches step by step, along with some common Q& A.

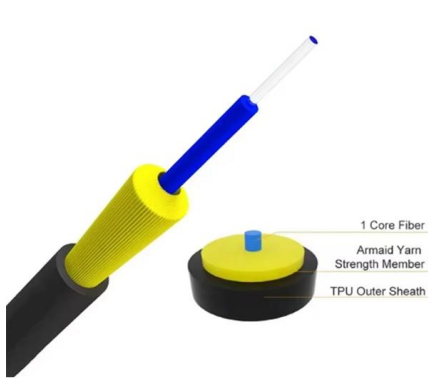
## What is a PoE Switch

Network switches form the backbone of any Local Area Network, or "LAN" (pronounced "lan") for short. On this page you will learn what differentiates



## The Ultimate Guide to Power Over Ethernet Switches:

Discover everything you need to know about PoE switches in our ultimate guide. Learn how Power over Ethernet simplifies network deployment



## Contact Us

---

For datasheets, pricing, or custom telecom energy solutions, please visit:  
<https://koskolong.co.za>