



Adam Tas Corridor Energy

Comoro Stainless Steel Cable Tray Models and Dimensions





Comoro Stainless Steel Cable Tray Models and Dimensions



Cable Trays and Accesories

SFSP cable trays and accessories from SFSP are manufactured from steel sheets in accordance with BS EN 10130/BS EN 10131/ BS EN 10051, complying with BS

Imperial cable tray system , NEMA cable tray

B-Line series imperial cable tray is designed to reduce support costs. Learn about our multiple-point welding system that results in unmatched strength and reliability.



ET3 Cable Tray

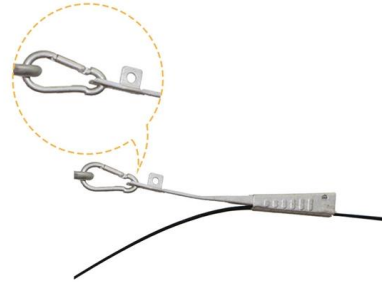
The EzyStrut ET3 cable trays and accessories are available in pre-galvanised and hot dip galvanised steel, offer a 40mm cable laying depth and are suitable for commercial and industrial electrical fit outs.

Cable Tray Dimensions Guide: Standard Sizes, Tray

Explore standard sizes by tray type, understand width and depth limits, and see how to calculate



and choose compliant cable tray sizes for real projects.



Cable Tray Systems

Our cable tray systems securely hold and protect cables and come in many models and sizes, solid bottom and ventilated.

GUIDE CABLE TRAYS TECHNICAL

Specifies requirements for metal cable trays and associated fittings designed for use in accordance with the rules of Canadian Electrical Code, Part I and the National Electrical Code®



CABLE TRAY SYSTEM

ICMS cable tray system including Fittings and accessories is manufactured With return flange in a standard length of 2.44Mtr and 3 Mtr, according to the following Specifications and standards:





B-Line series Cable Tray Design Considerations

B-Line series Stainless steel cable tray is fabricated from continuous roll-formed American Iron and Steel Institute (AISI) type 304, 316 or 316L stainless steel.



Cable tray, Stainless steel, 70 mm , Wibe group

Stago - ES114 tray closed 60x70mm L=3m 1mm stainless steel AISI 304 Max. safe working load according to IEC 61537 (EF016305) Span between supports



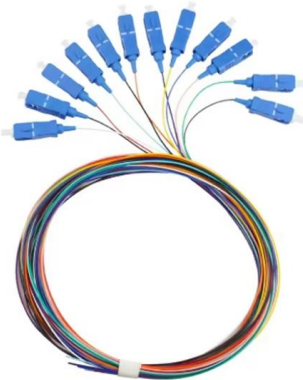
GUIDE CABLE TRAYS TECHNICAL

In accordance with its continuous improvement policy, Legrand reserves the right to change the specifications and illustrations without notice. All illustrations, descriptions and technical information



Channel tray

T& B channel tray systems are fabricated from a corrosion-resistant metal (low-carbon steel, stainless steel or an aluminum alloy) or from a metal with a corrosion-resistant finish (zinc or epoxy). The



CABLE TRAY SYSTEM

SS304, and SS316. Aluzinc Steel Sh Product
Finish: Hot Dip Galvanized to BS EN 1461
(formerly BS 729) Industrial Epoxy Powder
Coating. Related Standards: BS EN 61537: 2007
Cable Management

C ExpressTray Steel wire basket tray

Compatible with all tray profiles, the adjustable splice is available in electro-galvanized, pregalvanized, hot-dipped galvanized and stainless steel (types 304 and 316).





LoRawan outdoor base station

- * Industrial Internet gateway
- * Compatible with LoRaWAN network,
- * ClassA/B/C mode
- * Support 8/16 channel
- * Supports PoE power
- * supply and backup battery power supply
- * 10KV lightning protection

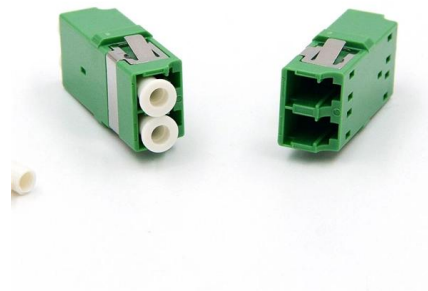


Cable Tray Technical Guide A practical guide to product selection and

A practical guide to product selection and installation This guide for engineers and installers has been developed by ABB as a practical reference regarding cable tray characteristics, installation, and

Cable Tray Systems , Cable Management Trays , Metsec

Our Cable Tray Systems and cable management trays offer high quality steel and galvanised steel solutions for the mechanical and electrical services industries.

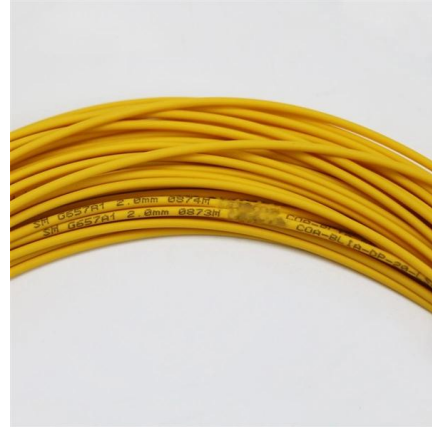


Stainless Steel Cable Tray Supplier And Manufacturer

KDM stainless steel single rail cable tray has the capability to hold cables perfectly. It constructed very durable and acceptable cost so we can support your projects.

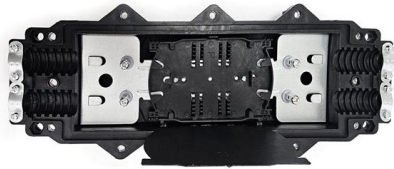
Cable trays: 3D models

Discover all CAD files of the "Cable trays" category from Supplier-Certified Catalogs SOLIDWORKS, Inventor, Creo, CATIA, Solid Edge, autoCAD, Revit and many more CAD software but also as STEP,



Steel cable tray

Formed side rails are welded to 15/8 in. wide rungs to provide maximum rigidity and strength. Rung design includes exclusive Ty-Rap cable tie slots on 1 in. centers.



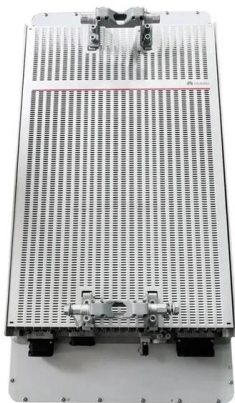
CABLE LAddEr TrAY

Cable tray system components and cable ladder tray system components have been declared electrically non conductive. An overall accuracy of surface resistance has been guarantee: surface



23 CABLE MANAGEMENT CATALOGUE.pdf

Approvals EN 61537 - Cable management. Cable tray systems and cable ladder systems EN 50085 - Cable trunking systems and cable ducting systems for electrical installations We can provide a





Stainless Steel Tray Solutions , PDF , Metals , Chemistry

It lists various tray models for cable management with details on material grades, dimensions, load ratings, and mounting configurations. Accessories like connectors, covers, brackets and fittings are



STAINLESS STEEL CABLE TRAYS, 304 316 STAINLESS STEEL

Stainless steel cable tray is available in ten standard widths - 50mm, 75mm, 100mm, 150mm, 225mm, 300mm, 450mm, 600mm, 750mm and 900mm. A full range of couplers, bends, tees and risers are



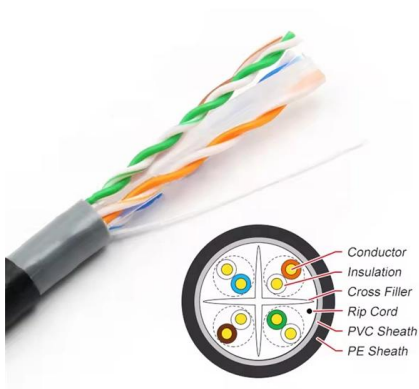
SWIFTS CABLE TRAY

- Swifts cable ladder - Swifts cable tray - Salamandre distribution trunking and lighting trunking - Cablofil steel wire cable tray - Floor systems - Perimeter systems



Resources for Cable tray and ladder systems

Our cable tray design considerations guide details key factors to consider when designing cable tray systems for industrial and commercial applications. Browse





Contact Us

For datasheets, pricing, or custom telecom energy solutions, please visit:
<https://koskolong.co.za>