



Adam Tas Corridor Energy

Composite cable tray expansion joint





Composite cable tray expansion joint

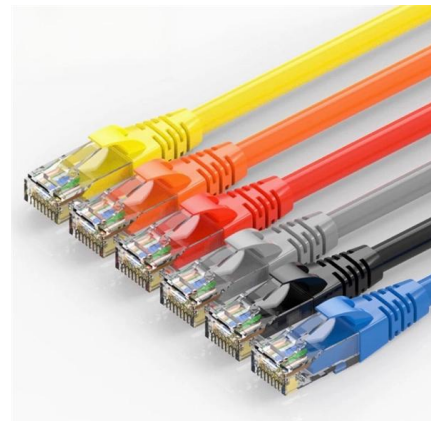


Expansion Splice Kit

Cablofil's Wiremesh Cable Tray concept is based on performance, safety, and economy. These three qualities make the Cablofil Wiremesh Cable Tray system preferred by installers.

Fiberglass Cable Tray Thermal Expansion Data

Technical data on fiberglass cable tray thermal expansion, contraction, installation, and gap settings. Includes tables and diagrams.



Cable Tray Thermal Expansion Guidelines , PDF

1) Cable trays need expansion joints to allow for thermal contraction and expansion due to temperature changes. The NEC requires expansion joints where



Cable tray expansion joint setting method

Reasonable setting of cable tray expansion joints is a key link to ensure the safe operation of the



cable tray system, and factors such as thermal expansion compensation, vibration absorption



392.44 Expansion Splice Plates.

2020 Code Language: N 392.44 Expansion Splice Plates. Expansion splice plates for cable trays shall be provided where necessary to compensate for thermal

Cable tray (expansion joints) , Information by Electrical Professionals

NEMA has a free PDF installation guide that gives you the information needed to calculate how many expansion joints are needed. The code never tells you that you need one every so many



LoRa handheld portable base station



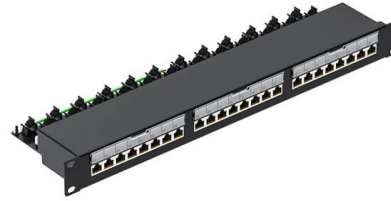
Thermal Expansion of Cable Tray

A cable tray system may be affected by thermal expansion and contraction, which must be taken into account during installation. To determine the number of expansion splice plates you



How to mount joints between sections of Unex insulating cable tray 66

Mounting the connecting piece between two lengths of Unex insulating cable tray. To mechanically join lengths of tray. In areas with temperature variations (e.g. outdoor applications), is



T.D.S.

It is important that cable tray installations incorporate features which provide adequate compensation for their thermal contraction and expansion. The length of the continuous cable tray straight run, and the

Cable Tray Expansion Joint Features

Cable Tray Expansion Joint Features This document provides information about expansion joints and fix/sliding joints for tubular conductors on post insulators.



Cable Tray Thermal Expansion Guidelines

Cable Tray Thermal Expansion Guidelines 1) Cable trays need expansion joints to allow for thermal contraction and expansion due to temperature changes. The



What is Expansion Joint Cable Tray Installation

Learn the essentials of expansion joint cable tray installation and how they ensure safe and durable cable tray systems in various environments.



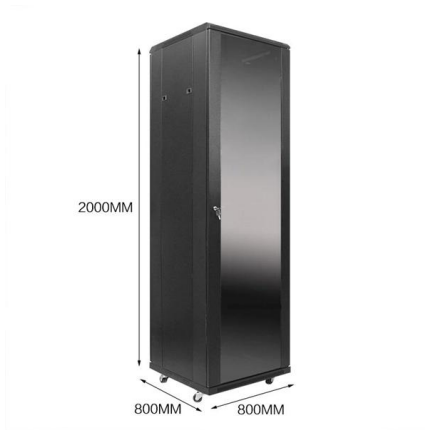
Cable tray (expansion joints) , Information by Electrical Professionals

Is there anywhere else in the NEC book that says cable tray has to have an expansion splice plate every so many feet? Alls I have found is 392.44 which says- Expansion splice plates for

392.44 Expansion Splice Plates.

392.44 Expansion Splice Plates. An expansion splice plate may have slotted holes to allow for movement in the cable tray. A bonding jumper is required where cable





THERMAL EXPANSION DESIGN IN CABLE BUS

Special fittings accommodate the difference in expansion between conductors and the cable bus housing. Proper design and placement of expansion joints and fittings can minimize stresses and

Made in Canada - T& B® Cable Tray expansion joint system

Meet the people who designed and produced the expansion joint system used on the Champlain Bridge section of the REM, Montreal's new, fully-automated, electric light rail system.



Expansion joint

The CEI EN 61537 standard states that the maximum acceptable longitudinal inflexion is 1/100 of the distance between supports, and that the maximum acceptable transversal one is 1/20 of tray width.

Expansion splice plate for a cable tray run

A cable tray expansion splice plate for connecting first and second cable tray sections end-to-end is disclosed. The splice plate includes an elongate body having a central section, an upper flange



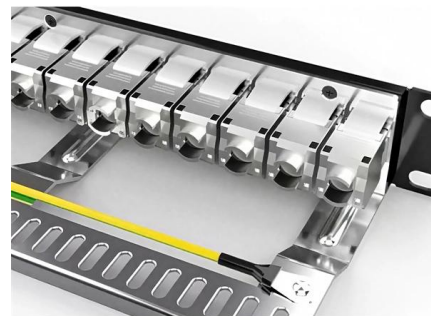
Thermal Expansion and Contraction of Cable Tray

A cable tray system may be affected by thermal expansion and contraction, which must be taken into account during installation. To determine the number of expansion splice plates you need, decide the



Thermal Contraction and Expansion of Cable Tray

The cable tray needs to be anchored at the support closest to the midpoint between the expansion joints with hold down clamps and secured by expansion guides at all other support locations. The



Managing Thermal Expansion and Contraction in Cable

Learn how to manage thermal expansion and contraction in cable tray systems with expert tips on expansion joints, guides, and spacing to ensure



CTI-S65001_A01

Step 2: Determine the gap setting between the cable tray expansion splice joints at the time of the installation to account properly the movement due to thermal expansion/contraction (See Figure 65)



US8960611B1

An expansion joint is disclosed for a cable tray apparatus for a people mover system. An expansion joint is inserted or positioned between a pair of generally rectangular electrical cable trays having first and

Thermal Contraction and Expansion of Cable Tray

It is important that cable tray installations incorporate features which provide adequate compensation for their thermal contraction and expansion.



INSTALLATION OF EXPANSION JOINTS IN CABLE SUPPORTED

Abstract The proper installation of sensibly selected, well designed expansion joints in bridges is a key factor in ensuring durability and minimising life-cycle costs. This is especially true for the large



Cable Tray Expansion Joint Installation: Comprehensive

Discover best practices for cable tray expansion joint installation to accommodate thermal changes, ensuring structural integrity and compliance with



Contact Us

For datasheets, pricing, or custom telecom energy solutions, please visit:
<https://koskolong.co.za>