



Adam Tas Corridor Energy

Computer optical port module





Overview

An optical module is a typically hot-pluggable optical transceiver used in high-bandwidth data communications applications. Electrical Interface Types There have been multiple variants of the electrical interface of optical modules that have been used over the years.



Computer optical port module



What Is the Optical Audio Port, and When Should I Use It?

Ever wonder what that trapezoidal "optical" audio port is? You'll find these on the back of computers, HDTVs, media receivers, and more, but hardly

Understanding Optical Modules: Types and

Explore the essential principles and types of optical modules for fiber optic communication systems.



What is an SFP (Small Form Factor Pluggable) Port?

An SFP port is a slot on a network device or computer into which small form-factor pluggable (SFP) transceivers are inserted. An SFP transceiver,

The Most Comprehensive Guide Of Optical Modules

Explore the ultimate guide to optical modules. Learn types, functions, performance metrics &



how to choose the right module for your fiber network.



Rear of the optical fiber distribution box

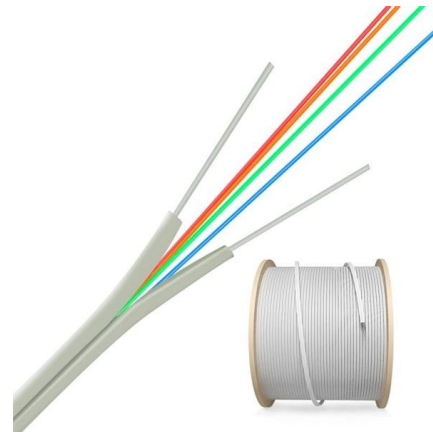


What is SFP Module? An Ultimate Guide (2024)

An SFP module is a small, pluggable optical transceiver that fits into the SFP port of a networking switch or other device. Sometimes, it is known as

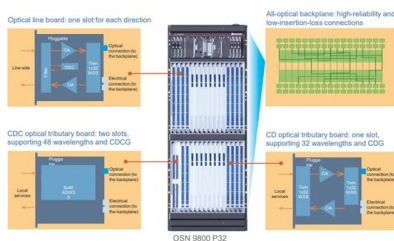
How to Install and Remove Optical Modules Safely

Install optical modules safely with ESD protection, proper handling, and dust control. Follow these steps to avoid damage and ensure network reliability.



How to Choose Optical Modules Correctly?

Optical modules are pivotal components in optical fiber communication systems, operating at the physical layer--the foundational level of the OSI model.





Optical module - A comprehensive exploration

What is an optical module? The optical module is one of the core components of the optical communication system. The optical module is



Fiber Optic Connector vs Ethernet Port, what is

Usually, there are several types such as SC, ST, FC, etc., which are used as an optical fiber bandwidth interface for large equipment such

What Is an SFP Optic Module and How Does It Work

SFP optic modules convert electrical to optical signals for fast, long-distance data transfer. Hot-swappable, versatile, and compatible with various



USB3.0 8-Port Optical Drive Front Panel,19Pin 8-Port

USB3.0 8-Port Optical Drive Front Panel,19Pin 8-Port Hub Optical Drive Expansion Pc Computer Front Panel Adapter,5.25 Inch Optical Drive Box Provided of Visit



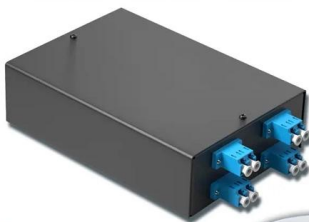
Siemens SIMATIC 6GK15032CB00 PROFIBUS Optical

Siemens SIMATIC Optical Link Module, PROFIBUS, 24 V DC, 0.2 A, 9.6 kbps to 12 Mbps Communication Rate, 9-Pin Sub-D Socket/2/5-Pole Terminal Block



4-port 8-core LC wall-mounted fiber terminal box (empty frame)

Surface painted Scientific plate fiber Cold-rolled steel plate



Lifetime quality assurance

Free shipping

Customizable for telecommunications

The Ultimate Guide to SFP Modules (2026): Types,

Confused by SFP vs SFP+? Read the definitive 2026 guide on SFP modules. We explain Single Mode vs Multimode, DDM diagnostics, and how to choose the right

How To Use The Optical Out Spdif Port On Your Pc

Connecting your PC to a home audio system using the S/PDIF (Sony/Philips Digital Interface) port is a straightforward process that can





S/PDIF connection on the mainboard - optical audio

Many PCs have an S/PDIF output on their mainboard, which you can use to transmit audio signals in stereo and multi-channel sound to other devices

How To Use The Optical Out Spdif Port On Your Pc

By following these steps and considering the additional tips, you can effectively use the S/PDIF port on your PC to achieve high-quality digital audio



The Ultimate Guide to SFP Modules (2026): Types,

Read the definitive 2026 guide on SFP modules. We explain Single Mode vs Multimode, DDM diagnostics, and how to choose the right transceiver for Cisco,

How to Use the Optical Out S/PDIF Port on Your PC

Configure your computer's sound settings: Once connected, you may need to adjust your PC's sound settings to enable the use of the Optical Out S/PDIF port for audio output.



Common knowledge of optical fibers, optical modules and optical

The optical modules that support this hot swap currently include GBIC and SFP. Since SFP and SFF are similar in size, they can be directly inserted on the circuit board, saving space and



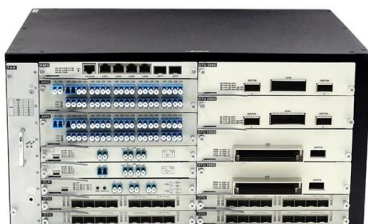
Openreach modem (ONT) explained: Ports and models

Openreach modem (ONT) explained: Ports and models available If you are a fibre customer, it's likely you'll have an Openreach modem (or ONT) installed. This



What Is an SFP Module? -- Complete Guide to SFP, SFP+ & SFP28

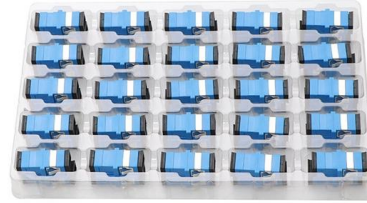
SFP modules are removable, standardized optical transceivers that enable modular media deployment. They convert signals between electrical and optical media and can support copper or fiber connections.





What is SFP Port? Everything You Need to Know

What is an SFP port? The SFP port also refers to a Small Form-factor Pluggable port. It is a compact mechanical slot that accepts an SFP module



Optical Modules and PCBs: Driving High-Speed Data Transmission in

In the fast-paced world of data communication, the demand for efficient, high-bandwidth solutions has never been greater. As AI-driven applications and massive data processing push the

How Do I Add Optical Audio To My Computer? A Step

If your PC doesn't have the S/PDIF port, then you can't add optical Audio to your computer unless you get the port. But if you have one, yet don't



Contact Us

For datasheets, pricing, or custom telecom energy solutions, please visit:
<https://koskolong.co.za>