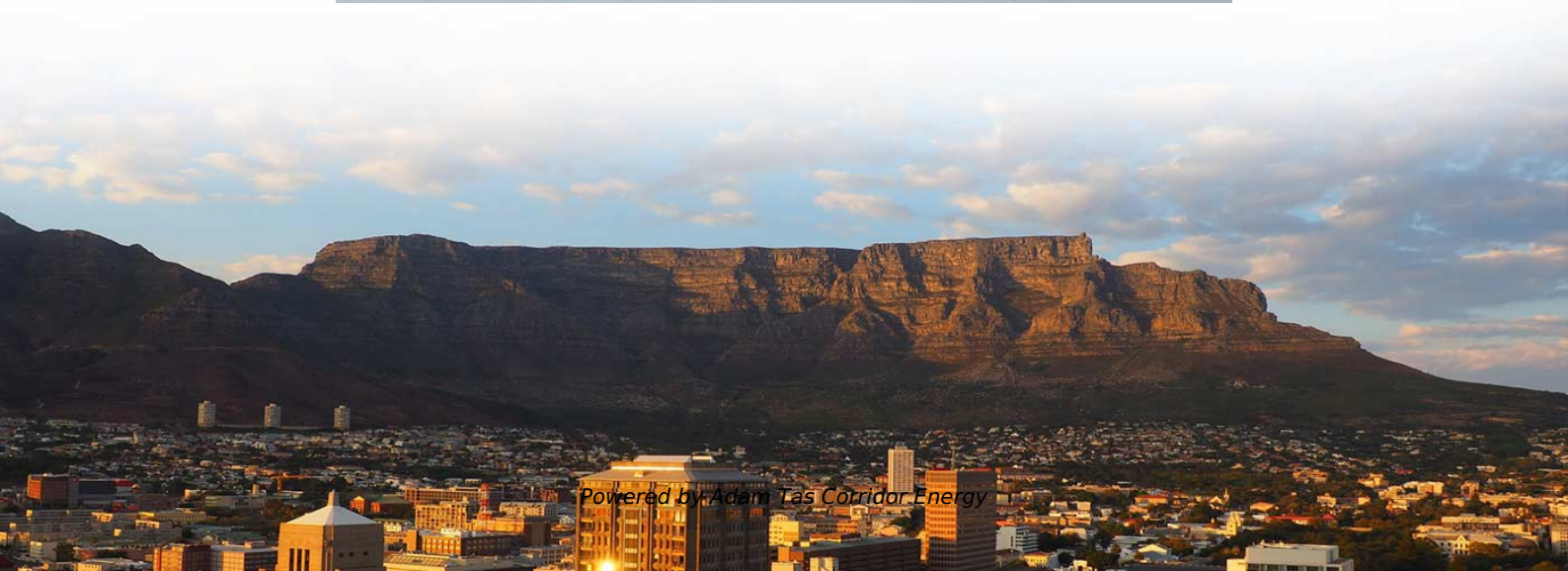




**Adam Tas Corridor Energy**

# **Configuration Standards for Double-Layer Distribution Boxes**





## Overview

---

Ensure safe placement: install in dry, accessible areas with good ventilation and at appropriate height (typically ~1. Continuity is the guiding principle for these cabinets for distribution board assembly – from their high degree of protection and their ease of installation to a portfolio which can meet all requirements in the field. This work is licensed under the Creative Commons Attribution-Noncommercial-NoDerivs 3. This document is the responsibility of the Substations Asset Strategy Team, Tasmanian Networks Pty Ltd, ABN 24 167 357 299 (hereafter referred to as "TasNetworks"). Distribution switchboards, including the Main LV Switchboard (MLVS), are critical to the dependability of an electrical installation. 63 VA V 8623 (amended upto date) – for general requirement of me d upto date) – Glass Reinforced in ion arrangement etc le pole Isolator (Switch Disconnecter), conforming to.



## Configuration Standards for Double-Layer Distribution Boxes

---

Rear of the optical fiber distribution box



### Annex I

This configuration is suitable for PSE spread out in the vicinity of the plant system I&C cubicles without a high density of PSE. As possible, the same metal plate will be used for both input and output chassis

### Requirements And Specifications For Installation Of

In flammable and explosive environments, explosion-proof distribution boxes should be selected and explosion-proof treatment should be carried out.



### The installation requirements for the distribution box

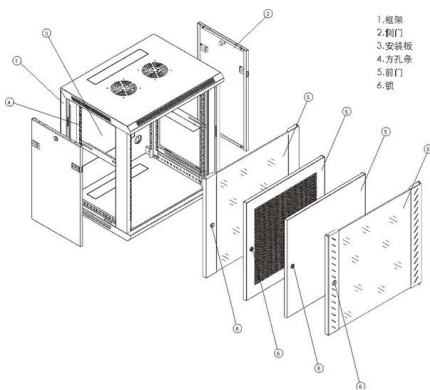
Learn how to install a distribution box safely and correctly. Covers wiring, placement, standards, and expert tips for a compliant setup.

### Handbook PO-632

Post Office personnel do not distribute mail into apartment-type mailboxes for dormitories or residence halls. As always, it is important to



contact your local USPS Growth Manager early in the planning

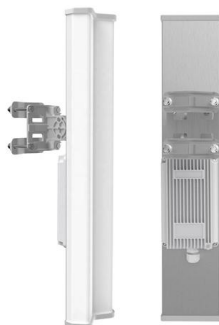


### Double-layer optimal configuration of active distribution network with

The power market reform broke the monopoly operation mode of vertical integration of power grid company, and the open market environment gave birth to diversified market participants. In order to

### Distribution Standard

The regulations, standards and guidelines listed in the section are relevant to distribution network design and have been provided to assist in undertaking designs.



### Distribution Board Design: Standards, Surge Protection

Discover the essentials of distribution board design to enhance electrical safety and efficiency in your projects. Read more in our informative blog



## Electric Power Distribution Systems

Summary This chapter provides an overview of electrical distribution network and systems. The primary substation is the load center taking power from the transmission or subtransmission network and



## IEC Standard for Power Distribution Board Design and

Home - Blog - Blog IEC Standard for Power Distribution Board Design and Layout By Abdul Wassay Posted on 01/06/2025 Updated on 24/01/2026



## Distribution Boards & Consumer Units

Distribution boards, together with modular ABB system pro M Compact protection devices and Modular Din Rail Components, can be used for many applications in electrical building installation. Solutions



### 26 20 00

2.27.1 CATV Outlets Provide flush mounted, 75-ohm, F-type connector outlet rated from 5 to 1000 MHz in standard electrical outlet boxes with isolation barrier with mounting frame.





## Distribution switchboards

Distribution switchboards, including the Main LV Switchboard (MLVS), are critical to the dependability of an electrical installation. They must comply with well-defined standards governing



## How to Install a Cable Distribution Box Safely and

Reliable cable distribution boxes ensure safe, efficient power management for residential, commercial, and industrial systems. Learn

## Microsoft Word

Notes: These and other box styles are described in the Fibre Box Association Handbook and ASTM D5118. Major flap - the flap following the longest distance of the box opening. Minor flap - the flap



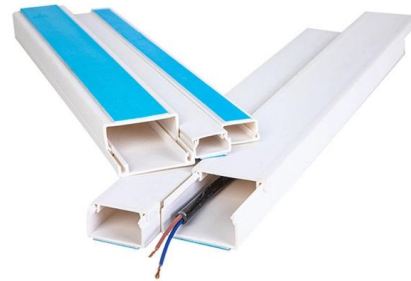
## The Ultimate Guide to Circuit Breaker Wiring

Messy distribution boxes are dangerous and very hard to fix. This guide shows you how to organize circuit breaker wiring properly. You will learn to build a safe,



### **Technical Specifications for Outdoor LT Distribution boxes with**

Scope: The scope of this specification covers Weather / Vermin proof LT distribution boxes (LTD) with controllers, MCCB, MCB, Bus bars, Contactors, CT's, Energy Meter, LT gas filled fixed capacitor, DC



### **Double-layer optimized configuration of distributed energy storage and**

Based on the above analysis, in order to coordinate the planning of DES and transformer capacity to achieve the highest utilization rate and optimal economy of distribution network

### **Distribution Boards & Consumer Units**

The wide range of distribution boards enables each customer to select an individual and economical configuration according to his requirements and satisfaction.





## **TIP applications for power distribution , Application manual**

2.3 Planning Tools for Electric Power Distribution  
Since the requirements for the equipment of data centres as well as the expectations with regard to system safety and documentation are constantly

### **Installation requirements for distribution boxes**

Distribution boxes shall be made of non-combustible materials; open distribution boards may be installed in production places and offices with low electric shock risk; enclosed cabinets shall

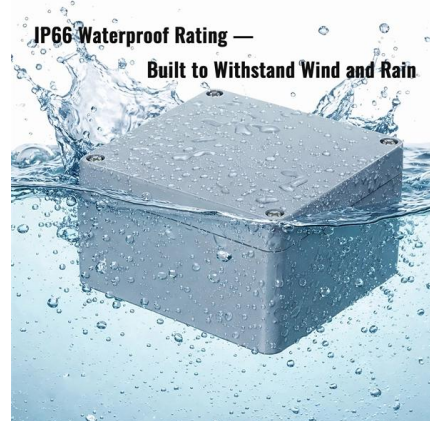


### **Distribution Box and Selection Guide**

Distribution Box Selection Guide This guide provides information on how to select the appropriate Distribution Box for Electric project. If you have any

### **525-2016**

Scope: This document is a guide for the design, installation, and protection of insulated wire and cable systems in substations with the objective of helping to minimize cable failures and



## DISTRIBUTION BOX

Technical Specification for Distribution Box (DB)-  
Accessory for LT AB Cables 1. SCOPE 1.1 This  
Distribution Box (DB) should be made up of  
Weather & Moisture Proof Outer box with Spring  
loaded



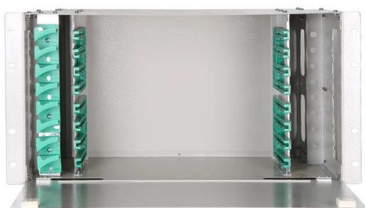
### 1.An Ultimate Guide for Metal Distribution Boxes

1) Metal Distribution Boxes Constructed from  
steel, aluminum, or cast iron, metal distribution  
boxes are highly durable and resistant to  
mechanical damage. Ideal



### TECHNICAL SPECIFICATION I.R.O. 63,100,160 & 315 KVA

Distribution Boxes shall have Isolator (Switch  
Disconnecter) on incoming circuit and Porcelain  
CUTOUT fuse base disconnecter on outgoing  
circuits with necessary interconnecting Bus Bars.





## TwinLine N

Optimized floor-standing cabinets for flexible use as energy distributor up to IP44 protection degree, available in up to 5 panel widths. The cabinets are prepared



## TECHNICAL SPECIFICATION FOR LT DISTRIBUTION BOX

General Technical Particulars for LT Distribution Boxes : - The L.T. Distribution Boxes should be of the dimensions as per the drawing & details in the table furnished.

## Distribution Boxes Types - The Complete Guide

The power distribution boxes deliver electricity from the main electrical main to other circuits. Several distribution boxes are designed for specific use in



## Contact Us

For datasheets, pricing, or custom telecom energy solutions, please visit:  
<https://koskolong.co.za>