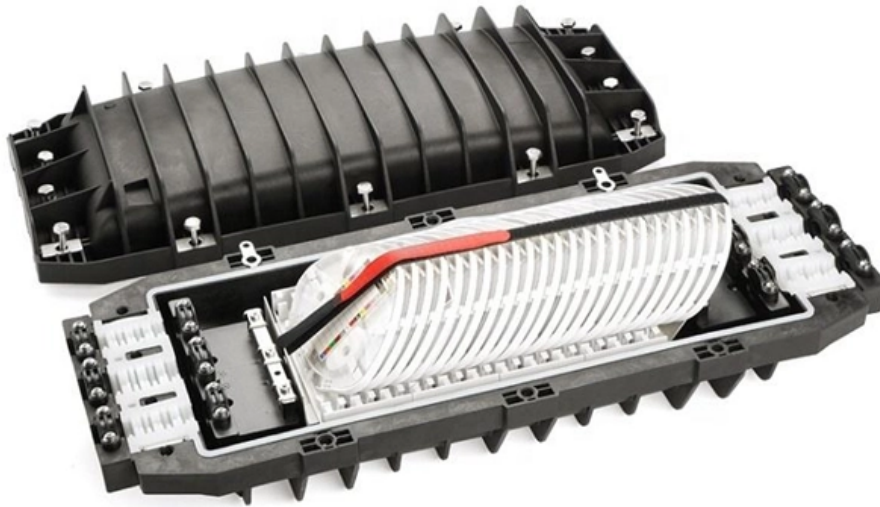




Adam Tas Corridor Energy

Configuration of switch boxes below level three distribution box





Configuration of switch boxes below level three distribution box



Size configuration of multiple circuit breakers in the

Choose the right size and setup for multiple circuit breakers in your distribution box to ensure safety, code compliance, and room for future upgrades.

System Arrangements

Abstract: The electrical point of interconnection with a utility can vary in voltage level whether it be secondary, primary, or transmission voltages. The reliability of an electrical system is directly affected



- IP65/IP55 OUTDOOR CABINET
- OUTDOOR CABINET WITH AIR CONDITIONER
- OUTDOOR ENERGY STORAGE CABINET
- 19 INCH

Basics in low voltage distribution equipment

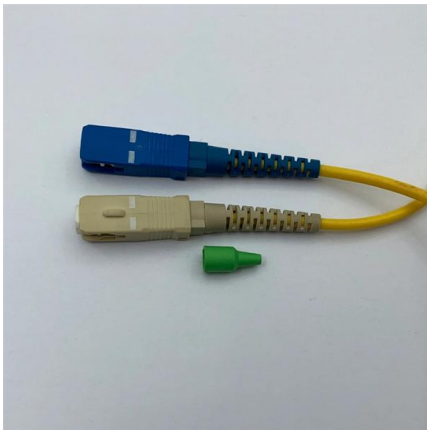
This paper provides a basic overview of the definitions, components, applications and other details associated with low voltage distribution equipment. It covers electrical panelboards, switchboards

Switchboards

A typical switchboard will contain the service entrance section with main devices and



distribution sections with branch devices. The sections contain disconnect devices, protective devices, auxiliary

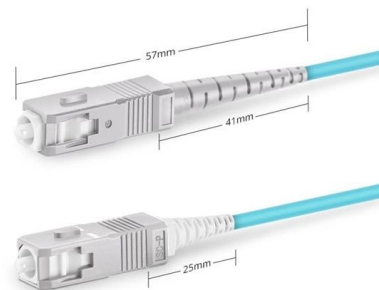


ITPro Today, Network Computing, IoT World Today combine

ITPro Today, Network Computing and IoT World Today have combined with TechTarget . The page you are looking for may no longer exist.

The purpose, working principle, and usage instructions

(3) Ensure the three-phase load balance of the temporary power distribution system, and form two power circuits for power and lighting on the



Simplex SC UPC

The Meaning and Function of Primary, Secondary, and Tertiary

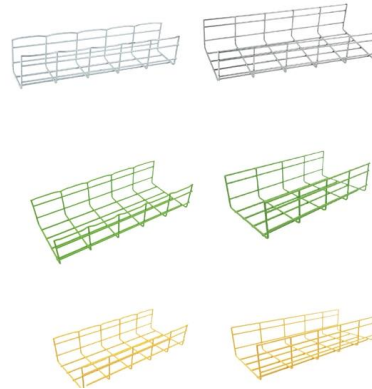
Tertiary Distribution System: Connects to end-use equipment via switch boxes, forming a three-tier power distribution system. Incorporates a "two-tier protection" strategy: Residual current devices





How to Wire a Home Distribution Box

How to Wire a Home Distribution Box - Step-by-Step , Distribution DB box wiring diagram
Welcome to our channel! In this video, we'll walk you through



Distribution switchboards

A distribution switchboard is the point at which an incoming-power supply divides into separate circuits, each of which is controlled and protected by the fuses or switchgear of the

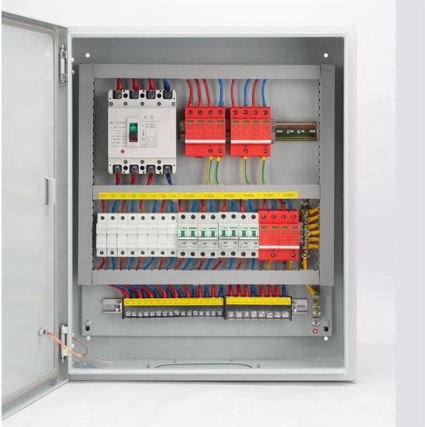
How to Wire a Switch Box

For this "Building Skills" article, veteran electrician Brian Walo describes how to wire a switch box. After stressing the importance of neatness and logic in the wiring



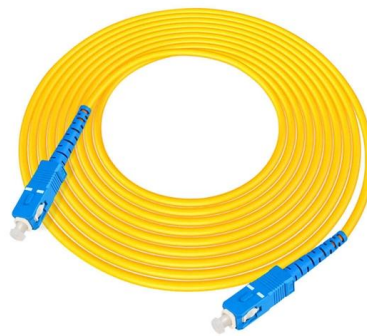
Essential Rules for 3-Level Electrical Distribution

Follow key principles: no cross-level wiring, one machine-one switch, $\leq 30\text{m}$ box spacing, dry/ventilated installation for safe distribution.



The Ultimate Guide to Circuit Breaker Wiring

Messy distribution boxes are dangerous and very hard to fix. This guide shows you how to organize circuit breaker wiring properly. You will learn to build a safe,



Site distribution box: "specific location, need specific you"

The power distribution system of the construction site is classified into three levels, and the main distribution board (or distribution room) is set. The switch box is set

Exploring the Electron Configuration with Box Diagrams

The box diagram electron configuration is a notation system used to represent the distribution of electrons among the energy levels and sublevels in an atom. It





TECHNICAL SPECIFICATION I.R.O. 63,100,160 & 315 KVA



Distribution Boxes shall have Isolator (Switch Disconnecter) on incoming circuit and Porcelain CUTOUT fuse base disconnecter on outgoing circuits with necessary interconnecting Bus Bars.

Distribution switchboards

Distribution switchboards, including the Main LV Switchboard (MLVS), are critical to the dependability of an electrical installation. They must comply with well-defined standards governing



AS/NZS 3000 Switchboard Rules - Complete Guide for

Switchboard rules is critical for ensuring electrical safety and functionality. Proper construction techniques are essential for the protection and

Six common bus configurations in substations up to 345 kV

Comparison of bus configurations This technical article explains six most common bus configurations used for distribution, transmission, or switching



Configuration Standards For Distribution Boxes (cabinets) At All Levels

The distribution box (cabinet) is suitable for temporary power supply at the construction site and should meet the requirements of "three-level power distribution, two-level leakage



Low-voltage distribution networks

In European countries the standard 3-phase 4-wire distribution voltage level is 230/400 V. Many countries are currently converting their LV systems to the latest IEC standard of 230/400 V



NEC Requirements for Switchboards and Panelboards

For other than a totally enclosed switchboard, a space of at least 3 ft must be provided between the top of the switchboard and any combustible ceiling unless



Industrial Automation Wiring and Grounding Guidelines

Purpose This publication gives you general guidelines for installing an Allen-Bradley industrial automation system that may include programmable controllers, industrial computers, operator



AS/NZS 3000 Switchboard Rules - Complete Guide for

The next section answers common questions under the AS/NZS 3000 Wiring Rules, including what switchboards are, when they're required, and the

System Arrangements

Typical equipment for this system arrangement is a single unit substation consisting of a fused primary switch, a transformer of sufficient size to supply the loads, and a low-voltage switchboard. This





Three-Tier Power Distribution System in a Newly Constructed

In a newly constructed residential area, a 10kV power line is introduced into the substation. After stepping down the voltage through the transformer's low-voltage side (0.4kV), power distribution is

Step-by-Step Guide to Wiring a 3 Phase DB Box

Learn about the wiring process for a 3 phase distribution board (DB) box, including the necessary steps and safety precautions. Understand how to connect the



The difference between the first, second, and third levels of

As for the equipment inside, there are certain differences: the first level distribution cabinet generally has isolation switches, circuit breakers, leakage protectors, etc., the second level

The installation requirements for the distribution box

Learn how to install a distribution box safely and correctly. Covers wiring, placement, standards, and expert tips for a compliant setup.



More products

OUTDOOR CABINET



FTTX SOLUTION



DATA CENTER



Contact Us

For datasheets, pricing, or custom telecom energy solutions, please visit:
<https://koskolong.co.za>