



Adam Tas Corridor Energy

Connecting a 10 Gigabit Switch to a Xiaomi 10 Gigabit Router



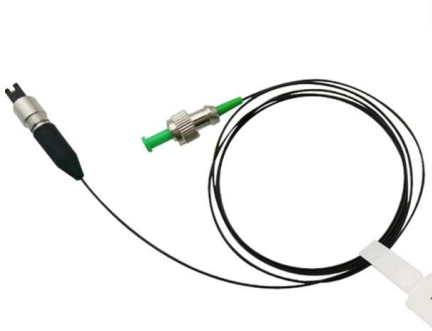


Overview

Physical Connection To set up your network, follow these steps: Connect the Xiaomi 10G Ethernet Switch to its power supply using the provided power adapter. Connect your router's LAN port or the optical/broadband modem's LAN port to one of the switch's 2.5 Gigabit RJ45 ports and 10 Gigabit SFP+ ports, this switch provides robust and stable high-speed data transmission for. It is an iterative technology following 10 megabit (10Mb/s), 100 megabit (100Mb/s), and 1 gigabit (1Gb/s) Ethernet.



Connecting a 10 Gigabit Switch to a Xiaomi 10 Gigabit Router

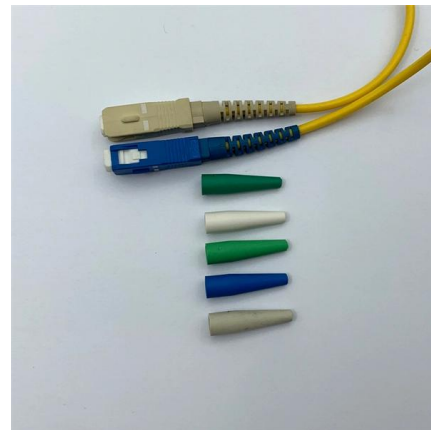


Xiaomi : The Xiaomi 10G Switch with dual 10Gbit

The Xiaomi 10G switch is suitable for use in smaller local networks such as studios or small offices. It has two 10G SFP+ network ports with

What is a gigabit switch?

What is a gigabit switch? A gigabit switch is a type of network switch, typically Ethernet-based, that allows devices to be connected to a LAN at speeds of 1



TP-Link 5-Port 10G Multi-Gigabit Desktop Switch TL-SX105

\$250 , Brand new TP-Link TL-SX105 5-Port 10G Multi-Gigabit Desktop Switch. Features 5x 10-Gigabit ports for lightning-fast connections. Supports auto-negotiation for optimal performance. Silent

Xiaomi Gigabit Ethernet Switch (SW-108G) User Manual

A diagram illustrating a typical network setup, showing how the Gigabit Switch connects to a



router and various end devices like computers, TVs, and game consoles, emphasizing its plug-and-play nature.



Gigabit Ethernet Switch Guide: How It Works, Types

How to Connect a Gigabit Switch A gigabit switch connects upwards to a router or core network device to provide internet access and downwards to end

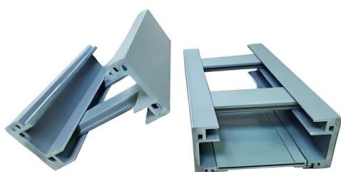
Do I Need a Gigabit Switch or 10/100Mbps Switch?

10/100Mbps Switch: Still Alive and Well for Some Reason 10/100Mbps switch is a Fast Ethernet switch released earlier than Gigabit Ethernet switch. The data speed of 10/100Mbps switch



Xiaomi 10G switch with dual 10G Ethernet ports

The Xiaomi 10G switch is suitable for use in smaller areas like studios or small offices. It features two 10G SFP+ network ports with a maximum





10Gb Switch Concepts, Parameters, and Application Scenarios

The 10Gb Switch can be understood as a 10 Gigabit switch. Here, 10Gb refers to 10 Gigabit Ethernet, with a speed of up to 10 gigabits per second (10Gbit/s). It is an iterative technology



Guide: 10 Gigabit Networking

Guide: 10 Gigabit Networking For small office/home setups, 10-gigabit networking is probably a lot cheaper than you think. For larger environments, it's certainly going to cost more, but

Xiaomi Mi 10 Gigabit Ethernet Switch SW-106T-A User Manual

Instruction manual for the Xiaomi Mi 10 Gigabit Ethernet Switch (Model SW-106T-A), covering setup, operation, maintenance, and specifications for high-speed network connectivity.

Integrated Aluminum Alloy Die Casting



Durable and Secure Metal Screws



Gigabit Ethernet vs. Fast Ethernet: What's the Difference?

For example, let's say you have a media server in your basement with a Gigabit Ethernet card installed and a media console in your living room with a



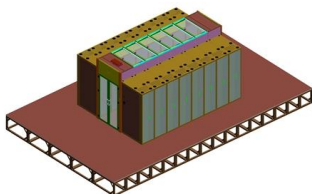
Xiaomi Gigabit Switch and Xiaomi 10G Switch released in China

If the Xiaomi 10G Switch is designed for the most advanced connectivity needs. With two 10G SFP+ network ports, supports a speed of maximum transmission of 10 Gbps has always been



putting a 10gbe Switch inside a mostly gigabit network? : r

IP addresses are layer 3 and switches operate at layer 2, so the switches are effectively invisible. Connect all the switches together and the attached devices will happily run on the same IP network



Xiaomi 10G switch with dual 10G Ethernet ports

The Xiaomi One Gigabit router pricing and availability details are yet to be released. Xiaomi has also not provided any global availability and pricing



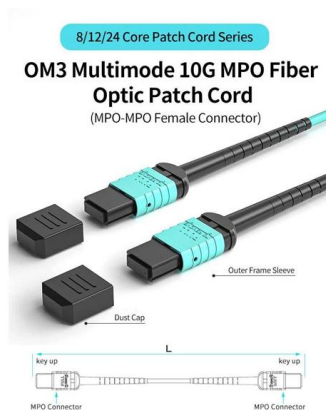
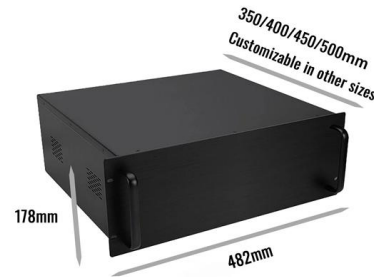


Xiaomi Gigabit Switch and Xiaomi 10G Switch released in China

Xiaomi Gigabit Switch II Xiaomi Gigabit Switch has 8 Gigabit ports and a total forwarding capacity of 16 Gbps. This switch is compatible with a wide range of terminal devices, including

Xiaomi Mi 10 Gigabit Ethernet Switch: A Comprehensive

The Xiaomi Mi 10 Gigabit Ethernet Switch offers 10Gbps and 2.5Gbps ports, supporting high-speed data transfer and advanced features like VLAN and LAN splitting. It is ideal for managing multiple devices



Xiaomi Mi 10 Gigabit Ethernet Switch 10000Mbps

Xiaomi Mi 10 Gigabit Ethernet Switch 10000Mbps Network Switches VLAN Ethernet Splitter Lan Router 4x2.5G Ports RJ45 Hub Switch \$ 126.39

How to Add a Gigabit Switch to Your Network

If the router from your Internet Service Provider only has a few ports then to upgrade your wired network you need to add a Gigabit Ethernet switch.



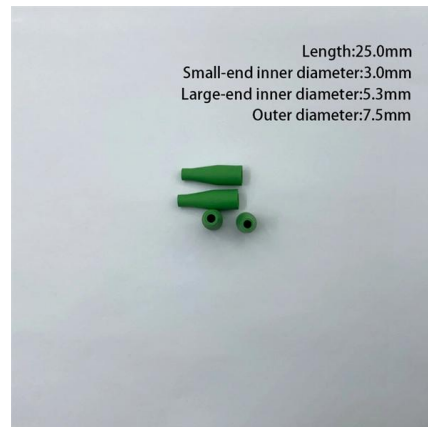
Xiaomi 10G Ethernet Switch: Is It the Right Upgrade for

The Xiaomi 10G Ethernet Switch significantly boosts file transfer speeds between compatible devices using 2.5G or 10G connections and proper cabling, offering reliable, low-latency performance ideal



10Gb Switch Concepts, Parameters, and Application Scenarios

The 10Gb Switch can be understood as a 10 Gigabit switch. Here, 10Gb refers to 10 Gigabit Ethernet, with a speed of up to 10 gigabits per second (10Gbit/s).



putting a 10gbe Switch inside a mostly gigabit network? : r

Connect all the switches together and the attached devices will happily run on the same IP network as before. It's probably worth upgrading your gigabit switch to one that has a 10G uplink port too. That





Unlocking the Power of 10 GbE: The Ultimate Guide to

Explore fibermall about 10 GbE switches! Unlock advanced networking with our ultimate guide to 10 Gb network switch technology.

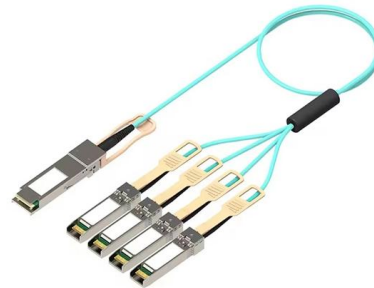


Gigabit Ethernet Switch

Using Gigabit Ethernet (1000 Mbps), you will be sending files across your network at speeds up to 2,000 Mbps due to the full-duplex nature of Gigabit Ethernet. This enables you to move large amounts of

Xiaomi 10 Gigabit Router Launched Alongside Xiaomi 13

In this article, we'll discuss the recently released Xiaomi 10 Gigabit Router. It includes a number of fascinating improvements, including support for



Xiaomi 10 Gigabit Router WiFi 7 User Manual

This manual provides detailed instructions for setting up, operating, and troubleshooting your Xiaomi 10 Gigabit Router. Please read it carefully before use.



Complete 10GbE Network Setup Guide: Level Up Your Speed

Ever waited forever for a big file to copy? Forget that! With 10 Gigabit Ethernet, you can send huge videos in seconds, not minutes. It's like



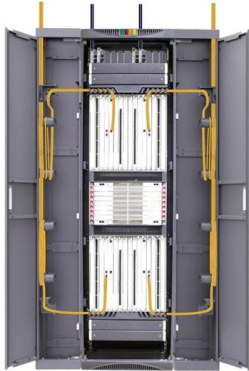
Can you mix gigabit and 10/100 ethernet on the same network?

Ideally I'd like to have a gigabit and 10/100 running on the same network so that the older boxes could use the latter while the machines that have gigabit ethernet onboard could run at modern speeds. Is

Xiaomi Router 10000: A Great Premium 10GbE Speedster

Xiaomi Router AX10000 Review, Specifications, Features, and Product highlights. Maybe you missed it? Redmi AX5400 Review





Xiaomi 10G Ethernet Switch User Manual

To set up your network, follow these steps:
Connect the Xiaomi 10G Ethernet Switch to its power supply using the provided power adapter.
Connect your router's LAN port or the optical/broadband modem's

Xiaomi mi 10 gigabit ethernet switch 10000mbps

Only US\$65.99, buy best xiaomi mi 10 gigabit ethernet switch 10000mbps network switches vlan ethernet splitter lan router 4x2.5g ports rj45 hub switch sale online



Contact Us

For datasheets, pricing, or custom telecom energy solutions, please visit:
<https://koskolong.co.za>