



Adam Tas Corridor Energy

Connecting a 100Mbps fiber optic transceiver to a switch





Overview

Insert a compatible SFP transceiver into the converter's port, making sure it matches the network's media type and speed. Compared with copper-based 100BASE-TX connections, it offers stronger EMI immunity, longer reach, and improved reliability in electrically noisy. These transceiver modules are hot-swappable input/output (I/O) devices that plug into 100BASE, 1000BASE and 10GBASE ports (for SFP+), which connect the module port with the fiber-optic or copper network. If the switch either fails to show a link between an installed transceiver and another device or demonstrates errors or other unexpected behavior on the link, check the port configuration on both devices for a speed and/or duplex (mode) mismatch. Then, connect one end of the fiber cable to the transceiver and the other to the appropriate port on a switch, router, or another media converter. This quick yet practical demonstration dives into the installation, configuration, and traffic monitoring of SFP optical and twisted-pair transceivers.



Connecting a 100Mbps fiber optic transceiver to a switch



Fiber Optics Demystified: How To Choose a

When upgrading fiber optic hardware, whether transceivers, direct attach cables or active optical cables, patch cables, media converters, or

Small Form-factor Pluggable

Small Form-factor Pluggable Small Form-factor Pluggable connected to a pair of fiber-optic cables Small Form-factor Pluggable (SFP) is a compact, hot-pluggable



Cisco XFP vs. SFP vs. SFP+ (2025 Guide): Differences,

Optical transceivers are at the heart of modern fiber networks - connecting switches, routers, and servers with blazing-fast links. Cisco's SFP,

How to match and connect fiber media converters properly

Learn how to connect fiber media converters step by step, check key setup details, and



choose the right model to ensure stable fiber-to-copper



DEM-211 SFP 100Base-FX Multi-mode Fibre

Further, in our effort to offer a full product portfolio, D-Link has developed the DEM-210 100BASE-FX SFP transceiver which can plug-in to the Gigabit combo SFP fiber

Mastering Long-Distance Connectivity: A Deep Dive into the 10/100Mbps

This guide explains how a single mode fiber media converter extends network connections up to 25km using SC ports and LFP, ensuring reliable long-distance data transmission for legacy systems.



Fiber To Copper Media Converters (Updated Daily) , Adorama

Fiber To Copper Media Converters offer a reliable solution for seamlessly connecting fiber optic networks to traditional copper-based systems. Essential for expanding network flexibility, these



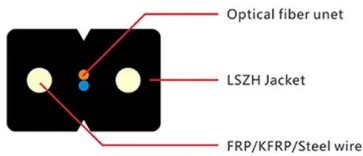
Virgin Media Broadband Deals: Compare in May 2026

Full fibre (or FTTP) broadband uses modern fibre-optic cables to deliver the fastest and most reliable connection - even at peak times.



AOC, DAC, Fiber Optic Transceivers , One-Stop Shop

Fiber Optical Cable OM3 Duplex OM5 Duplex OS2 Simplex MPO-MPO Extension QSA (40G/100G) SFP+/QSFP Extension Loopback SFP+/SFP28 Loopback Fiber



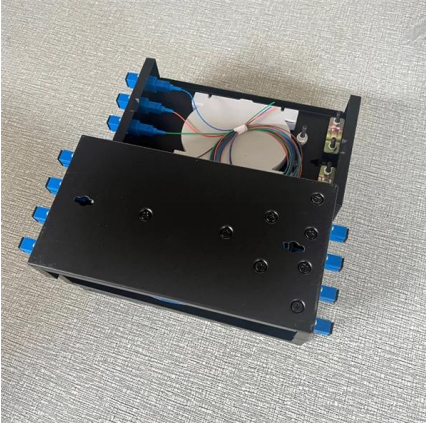
SFP Transceivers in Action: Configure, Connect, and Monitor Traffic A

This quick yet practical demonstration dives into the installation, configuration, and traffic monitoring of SFP optical and twisted-pair transceivers.



Step-by-Step Guide for Installing and Removing SFP

In this step-by-step guide, we will walk you through the process of installing and removing SFP transceiver modules to ensure proper handling and



Complete Guide to Choosing the Right 100M Optical

Choose the right 100M optical transceiver by checking compatibility, fiber type, wavelength, distance, data rate, connector, and reliability.



SFP+, XFP, QSFP+, DAC Twinax Cable 10Gtek Transceivers Co., Ltd

DAC Twinax Cable Maker. CE, FCC, RoHS, ISO9001 Certified. Professional Manufacturer focusing on SFP+ Cables, QSFP+ Cables, MiniSAS Cables, QSFP Cables, XFP Cables, CX4 Infiniband Cables



Single Mode vs Multimode Fiber, What is The

Learn the key differences between single mode vs multimode fiber cables and choose the right one for your fiber optic system.



Application Guide: Connecting Fiber-ready Network

Most modern fiber-enabled network switches require an SFP transceiver module featuring a duplex (two strand) multimode OM3 or duplex single mode OS2

Premium 10/100Mbps Ethernet to Fiber Optic Media Converters-Sin

10/100M optical port is full duplex mode ;Ethernet port 10/100M adaptive mode. Ethernet interface can adaptively direct line / crossover cable connection. Ethernet ports support full / half



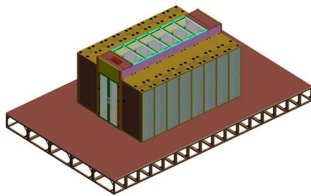
10G Multi-Mode Optical Module

SFP+ transceiver that supports 10G connections up to 300 m using multi-mode fiber with a duplex LC UPC connector.



StarTech MSA Uncoded SFP Module

Buy StarTech MSA Uncoded SFP Module - 100BASE-FX - 100Mb Ethernet SFP 100MbE Multi Mode Fiber (MMF) Optic Transceiver Module - 2km DDM with fast



StarTech SFP100MFXEMS Dell EMC SFP-100M-FX Compatible

The SFP100MFXEMS is a Cisco SFP-10G-ZR-S compatible fiber transceiver module that has been designed, programmed and tested to work with Cisco brand switches and routers. It delivers

Installing SFP+ transceivers and connecting cables

Orient a cable connector so that the key (the ridge on one side of the connector) aligns with the slot in the transceiver (see Figure 3). Then, insert the cable into the transceiver until the latching



fiber optic switch , Newegg

Search Newegg for fiber optic switch. Get fast shipping and top-rated customer service.



Understanding SFP to SFP+ Compatibility: A

It is now possible to connect 1/10G dual-rate SFP+ transceivers on a 10G switch with a 1G transceiver plugged into a 1G switch. What Is SFP Port on



A TON OF THINGS HAPPENED IN THE STOCK MARKET TODAY.

It is also about optical transceivers, lasers, fiber, switches, power, cooling, copper, glass, and every bottleneck inside the data center stack. The AI trade is expanding from chips into the

Connecting Fiber Optic Cable with Ethernet Ports for

Fiber optic cables, media converters, transceivers, and switches can have higher upfront costs compared to traditional copper-based solutions.





100BASE FX SFP: Complete Guide to 100Mbps Fiber Transceivers

Learn everything about 100BASE FX SFP, including specifications, transmission distance, fiber requirements, applications, and deployment best practices.



10 Gigabit Ethernet

Optical fiber A Foundry Networks router with 10 Gigabit Ethernet optical interfaces (XFP transceiver). The yellow cables are single-mode duplex fiber optic



Connecting transceivers to fixed-configuration devices

If the switch either fails to show a link between an installed transceiver and another device or demonstrates errors or other unexpected behavior on the link, check the port configuration on both

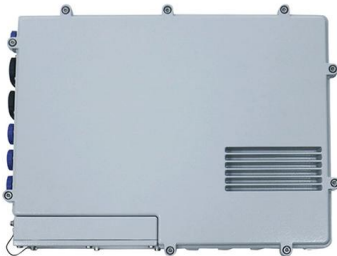
Cisco SFP and SFP+ Transceiver Module Installation

These transceiver modules are hot-swappable input/output (I/O) devices that plug into 100BASE, 1000BASE and 10GBASE ports (for SFP+),



How to connect a new optic fibre to an ethernet switch

The objective is to run 1 or 2 additional optic fibre from the main switch down to the shed in the back of my garden and down to the garage as well. Here's a quick sketch to present the layout



10G SFP+ Module Vs 10G RJ45 Module

It uses copper cables (Cat 6, Cat 6a, Cat 7) to transmit data and is backward compatible with 1G/100Mbps devices. 10G Optical Port (SFP+): A compact fiber interface that requires two



Contact Us

For datasheets, pricing, or custom telecom energy solutions, please visit:
<https://koskolong.co.za>