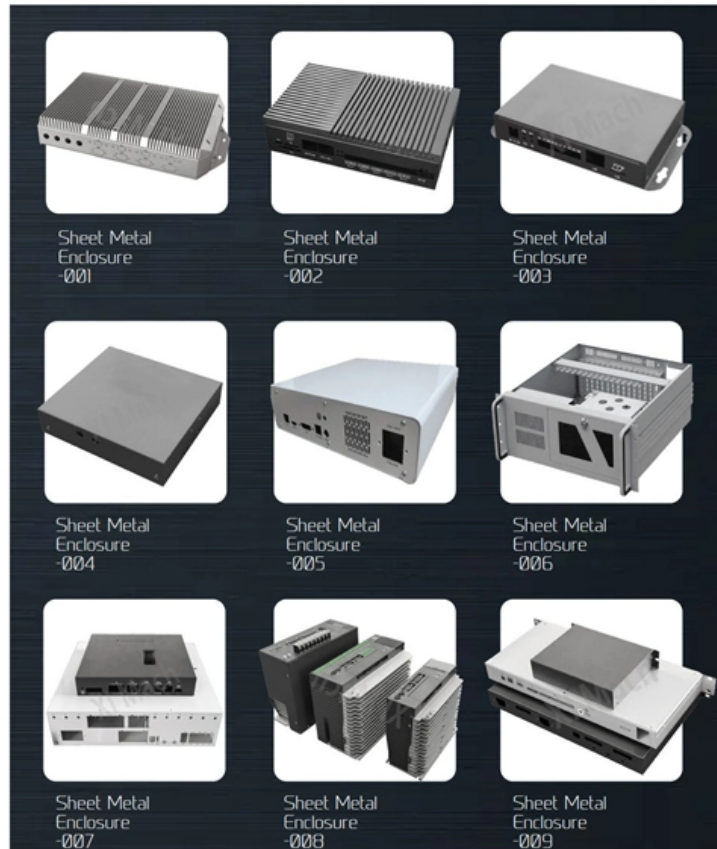




# **Construction Zone Metering Standard Distribution Box**





## Construction Zone Metering Standard Distribution Box

---



### Requirements for electric meter boxes on construction sites

Safety performance: The electric meter box should be made of safety materials that comply with national standards, have good insulation and fire resistance, and ensure safe use in complex and changing

### Ringless metering: Current Transformer metering

Common elements to CT metering include lockable NEMA 3R enclosures, 20-ampere meter sockets, and test switches that adhere to ANSI C12.9 standards. Ring and ringless designs are available with



### CONSTRUCTION CABINETS

Some of our electrical distribution cabinets also include blue or yellow metering boxes. Metering boxes enable you to obtain accurate EDF billing for consumption on your site.



### Microsoft Word

In some cases, the building exterior construction is not completed at the time the meter and antenna box are to be installed. In this scenario,



a temporary box may be installed, outside the building and not



## SERVICE STANDARDS & GUIDE

DIEGO AREA ELECTRICAL NEWSLETTER  
ATTENTION: THESE STANDARDS WERE DEVELOPED FOR MAINTAINING SAFETY AND RELIABILITY OF THE ELECTRIC DISTRIBUTION AND

### The installation requirements for the distribution box

Learn how to install a distribution box safely and correctly. Covers wiring, placement, standards, and expert tips for a compliant setup.



### Electric Panel Installation Method Statement

This document provides a method statement for installing and terminating electric panels and distribution boxes. It outlines 4 steps: 1) Pre-installation preparation



### Meterbox with Steel Enclosure Specification

METERBOX WITH STEEL ENCLOSURES This document contains proprietary information developed by and for exclusive use of Saudi Electricity Company (SEC) Distribution Network. Your acceptance



### ADDC Guidelines for Smart Meter Installation (Rev)

Install 25mm dia. PVC conduit (Heavy grade 1250N compression force) horizontally between the water meter room to electricity meter room in each floor and install vertically between the floor-to-floor from

### SDCS-02 CONSTRUCTION STANDARD FOR

SEC DISTRIBUTION CONSTRUCTION STANDARD SDCS-02 DATE: November 2016G Page 3 of 10 TABLE OF CONTENTS Sr. No. DESCRIPTION PAGE NO. 13.8/33 KV METERED RING MAIN UNIT



Cable structure



### Construction Guidelines

Where required, lower growing shrubs are acceptable. No trees. See listing of Forestry approved shrubs. When a landscaping plan is required, Forestry must approve the drawings. Rev 20150723.



## Meter Box (Electrical) Building Codes & Rules

Electrical Meter Box Tools(TM) simplifies the National Construction Code (NCC) with interactive graphics, including deemed to comply & best practices.

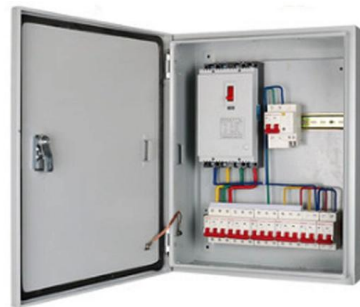


## Distribution Standard

1 Introduction This Distribution Design Standard for Building Type Substations and Switching Stations contains the approved design requirements and process considerations for the design of building

## WA Electrical Requirements

1 Introduction WA Electrical Requirements - uly 2008 Edition 5 The Act: The Electricity Act 1945; AMR System: Automated Meter Reading (AMR) system also known as a remote reading system. C(b)1:



## Section 6 (VOLUME 15): Gas Metering Standards , NV Energy

The UDA shall select a gas meter location that is in accordance with these standards to ensure safety, uniformity, and accessibility. The gas meter shall be located on the outside of the building to be



## WA Electrical Requirements

An up-to-date zone diagram clearly identifying, both electrically and geographically, the extent of every zone and every zone main switchboard location, has been placed in every zone main switchboard



## GTC Technical Guidelines

Ideally, service termination equipment and the meter should be located in an approved built-in meter box, on the wall closest to the electricity main at the front of the property.

## Standard

The relevant metering design sections within Eskom Distribution are responsible to implement the new designs according to the requirements as listed in this document.



## GUIDE TO

Guide to Supply and Metering Arrangement on Customer's Internal Distribution System 1. Acceptance of Customer's Schematic Wiring Diagram This Guide shall be read in conjunction with the attached



## Meter centers and meter stacks guide spec

This is a CSI formatted construction guide specification for Meter centers and meter stacks.

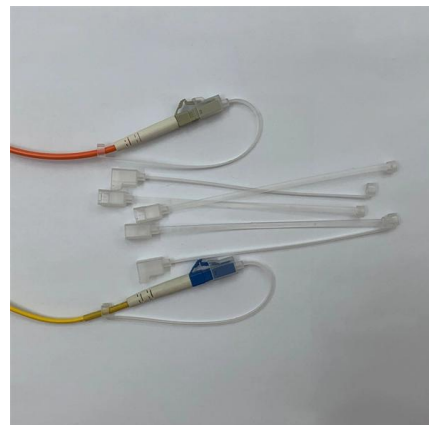


## National Metering Installation Requirements

These requirements draw heavily on those previously published by distribution businesses and are intended to provide guidance for use by manufacturers, distributors, retailers, customers, and

## Metering Requirements for Electrical Installations

Space shall be provided in a user's or customer's building for metering equipment required by the Distribution Code. Access to this space by the owner of the metering equipment shall be permitted at





### Meter distribution boxes: Spelsberg

Upper connection space, 300 mm, equipped with 35 mm standard rail for Meter distribution in multiple box-type design according to DIN EN 61439-2/-3, standard version

### SEC DISTRIBUTION CONSTRUCTION STANDARD

Introduction This construction standard specifies the design of wooden frames for polyester meter boxes intended to be installed recessed into the consumer's wall. This standard is intended to assist the



### CONSTRUCTION SITES

Thermoplastic boards with optimum impact and weather resistance, ideal for primary and secondary distribution on construction sites, shipbuilding sites or temporary uses. Available in two sizes, Q

### What Is a Meter Box? A Complete Guide to Types,

Learn what a meter box is, why it matters for electrical safety, its types, components, standards, and best installation practices for long-term reliability.





## FAQ's

4WA Electrical Distribution and Connection Requirements Q: How to achieve authorised access only for metering equipment? o Meter enclosures and access areas to be locked, provided that a standard

## YOUR METER CABINET

Meter cabinet must comply with ESB Networks specifications. Only ESB Networks equipment to be fitted in outside meter box, except in the case of temporary builder's supplies where the customer's



## WASIR - WA Service and Installation Requirements

Foreword Welcome to this Sixth edition 3rd revision of the WA Distribution Connections Manual, now known as the Western Australian Service and Installation Requirements (WASIR).

## Contact Us

---

For datasheets, pricing, or custom telecom energy solutions, please visit:  
<https://koskolong.co.za>