



Adam Tas Corridor Energy

Construction of 90-degree bends in horizontal cable trays





Overview

Creating a 90-degree elbow in an electrical cable tray, often called a "fabricated" or "mitered" bend, involves cutting, bending, and fastening a straight section of tray. The most common method involves creating two 45-degree cuts to form a 90-degree angle. Great if you are new or just forgot how to do it, this easy to follow guide makes it so simple. Horizontal Bends for Cable Trays are key components that allow for smooth directional changes in cable routing systems.



Construction of 90-degree bends in horizontal cable trays



Perforated Cable Trays 90 Degree Horizontal Bend

Perforated Cable Trays 90 Degree Horizontal Bend, Find Details and Price about Cable Tray Perforated Cable Tray from Perforated Cable Trays 90 Degree

A Guide to Installing and Supporting Electrical Cable Trays

A professional guide to installing electrical cable tray systems per NEC Article 392. Covers support, securing cables, and fill calculations.



HOW TO BEND 90 DEGREE OF CABLE TRAY BASIC TUTORIAL

They are especially useful in situations where changes to a wiring system are anticipated, since

Best Practice Guide to Cable Ladder and Cable Tray Systems

This guide covers cable ladder systems, cable tray systems, channel support systems and associated supports intended for the support and accommodation of cables and possibly other electrical



new cables can be installed by laying them in the tray, instead of pulling them through a pipe.



Bending Cable Tray

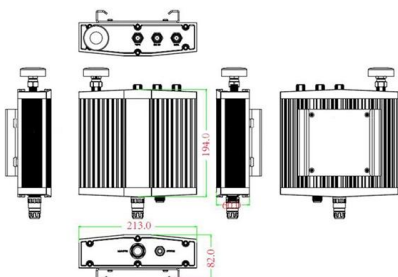
You can buy a manufactured 90 degree bend or make one on a cable tray bending machine but in this video I show you how to make one using a metal bar.

electrical #cable tray# making 90,° elbow

Creating a 90-degree elbow in an electrical cable tray, often called a "fabricated" or "mitered" bend, involves cutting, bending, and fastening a straight section of tray.



Mechanical drawing



Cable Tray, Cable Bus, Wire Mesh Cable Trays , MP

MP Husky manufacturers Cable Tray Systems, Cable Bus System, Wire Mesh/Wire,Cable Tray, & Cable Management Systems. Our cable support



Ladder Type Cable Tray Horizontal Bend , Pratik

A ladder type cable tray horizontal bend is a fitting designed to facilitate a smooth 90-degree change in the horizontal direction of a ladder cable tray system. This

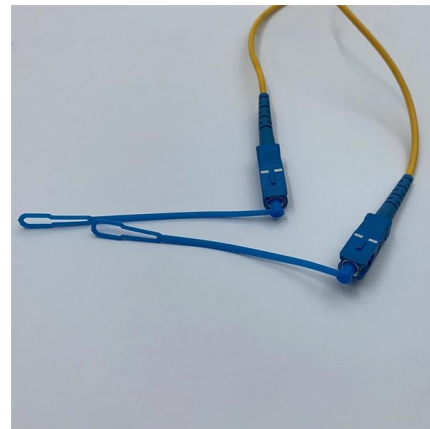


How to construct a flat 90° bend for Cable Trays

Construction of a flat 90° bend (G) The gusset is produced by cutting a piece of tray to the required size, removing 1 lip completely and bolting it to the

HOW TO BEND 90 DEGREE OF CABLE TRAY SUPPORT TO SUPPORT BASIC TUTORIAL

Cable trays are used as an alternative to open wiring or electrical conduit systems, and are commonly used for cable management in commercial and industrial construction.



Trunking Cutting Techniques Guide , PDF

The document provides instructions for forming various bends and joints in electrical trunking and cable trays. It describes: 1) How to mark and cut a right-angle



200mm Steel Perforated Cable Tray Horizontal Bend (90

The Cable Tray Bend allows for flexible, seamless routing of cables, preventing sharp angles that could damage wiring. Whether for short or long cable runs, our



90° Horizontal Bend - Infinite Engineering

90° Horizontal Bend Highlights 90° bend, horizontal, for all cable tray types of the series GKS of 60 mm side height.

Horizontal Cable Tray Bend, 90 Degree

Deep Enterprises - Offering Horizontal Cable Tray Bend, 90 Degree at INR 235/piece in Greater Noida, Uttar Pradesh. Get Cable Tray Bend at lowest price , ID:





Horizontal Bend , Ramdev Steel Industries

90° bend, horizontal, for all cable tray types of 50 mm side height. Including appropriate fastening material.

Perforated Horizontal Bend , Pratik Cabletray System Pvt. Ltd. Pune

Made from materials like galvanized steel, stainless steel, or aluminum, the perforated design provides both strength and ventilation, preventing cable overheating.



How to make 90°degree (45°x2) Cable trays/Trunking (100mm X

90° Bend (45° x 2) Formula How to make 90°degree (45°x2) Cable trays/Trunking (100mm X 50mm) Practical tutorial 1

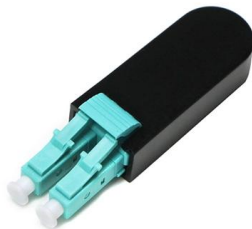
Make a 90 Bend in Electrical Cable Tray

How to make a 90 electrical cable tray bend to measurement of your choice. Great if you are new or just forgot how to do it, this easy to follow guide



Cable Tray Design and Components Guide

Tables list standard sizes and specifications for straight and bent cable trays, including width, height, thickness, materials, and finishes. Drawings show



How to make a 0-90° vertical angle for cable trays?

How to make a 0-90° vertical angle for cable trays? Elbow joint RVS is pushed inside the cable tray and attached with the included screw set. Elbow joint RVS can be



Ladder Type Cable Tray Horizontal Bend

A ladder type cable tray horizontal bend is a fitting designed to facilitate a smooth 90-degree change in the horizontal direction of a ladder cable tray system. This



Box Type Cable Tray Horizontal Bend

A box type cable tray horizontal bend is a fitting used to change the direction of a cable tray system horizontally, typically at a 90-degree angle. This component ensures smooth transitions around

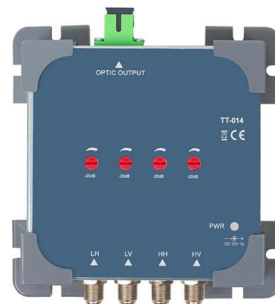


Horizontal Bend for Cable Trays

Horizontal Bends for Cable Trays are key components that allow for smooth directional changes in cable routing systems. These bends allow cables to be

Make a 90 Bend in Electrical Cable Tray

The Easy Guide to How to make a 90 electrical cable tray bend to measurement of your choice. Great if you are new or just forgot how to do it, this easy



Contact Us

For datasheets, pricing, or custom telecom energy solutions, please visit:
<https://koskolong.co.za>