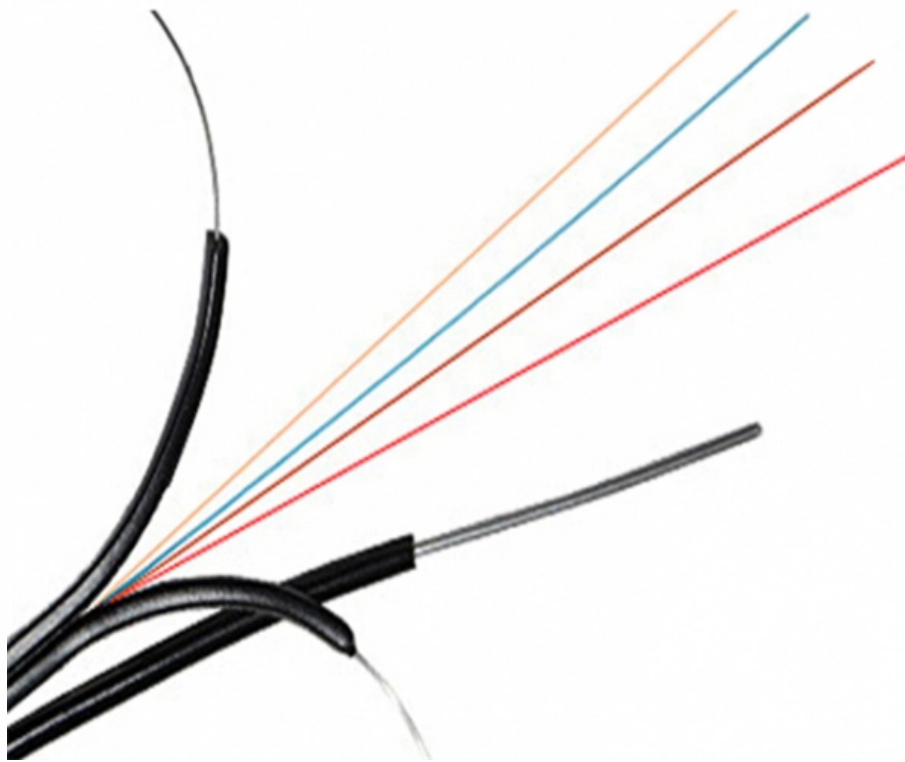




Adam Tas Corridor Energy

Construction of Cable Trays for Low Voltage Wires





Construction of Cable Trays for Low Voltage Wires



Wire Mesh Cable Tray

Discover wire mesh cable trays with CE certification, hot-dip galvanized steel for durable cable management in industrial & data center applications.

CABLE TRAY SYSTEMS GUIDE

Hubbell's NEXTFRAME® Ladder Tray is the effective and widely used cable runway that supports and delivers bundles of cable between cabinets, racks, and closets, along walls, and suspended from



Annex I

By convention, to avoid any misunderstanding and to simplify the cable tray design and installation, the bending radius for all cable trays and conduits should be at least 300 mm for Low Voltage, Sensitive

Cable Tray Technical Guide A practical guide to product selection and

In designing supports for a cable tray system,



consideration should be given to the loads associated with future cable additions and any additional loading that may be applied to the cable tray system (e.g.,



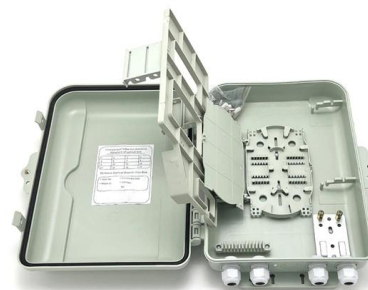
Complete cable tray manual for electrical engineers and

The final drawings for a cable tray wiring system may be completed



How to Choose Cable Tray for Low Voltage System

Discover a professional 5-step guide on how to choose the right cable tray for low voltage system. Learn about types, sizing, standards for reliable



GUIDE CABLE TRAYS TECHNICAL

IEC 60364: "Low Voltage Electrical Installations"
Standard EN 50174-2: "Information technology - Cabling installation" Practical guide UTE C 15-900: "Low voltage electrical installations - Erection

02

High Quality Material



High hardness to resist external impact, Good Shaping Performance Good Look and Anti-rust





Types of Cable Trays - Purpose, Advantages,

Cable tray is alternatives to wire ways and electrical conduits, which completely enclose cables. Study types of cable trays, purpose, advantages.



Amazon : Cable Rollers

Discover cable rollers for overlash construction and aerial work. Lightweight designs that snap on easily for quick installation.

A Guide to Installing and Supporting Electrical Cable Trays

This guide covers the critical steps, from selecting the right electrical cable tray and performing accurate cable fill calculations to managing a safe cable pull through



How to Choose Cable Tray for Low Voltage System

Selecting the correct cable tray for low voltage system--such as data networking, telecommunications, security, and building automation--is a critical



What Is a Cable Tray? Types, Materials, and Uses

These are often preferred for sensitive cables like fiber optics or where environmental isolation is a concern. The third major design is the Wire Mesh or Basket tray, which is constructed



Cable Tray Systems

MP Husky Manufactures the following types of Cable Tray Systems: Aluminum, Mill Galvanized Steel, Hot-Dipped Galvanized Steel, Stainless Steel, Fiberglass,

Guide to cable support systems

The systems are suspended from the ceiling with threaded rods, stand-off brackets allow raised floor mounting of cable trays, ladders and mesh cable trays. The universal systems comprise ceiling





Installation Of Cable In Cable Trays: NEC, Safety

Installation of Cable in Cable Trays ensures proper routing, cable management, NEC compliance, grounding, fire safety, and load capacity.

Cable Tray Technical Guide A practical guide to product selection and

A practical guide to product selection and installation This guide for engineers and installers has been developed by ABB as a practical reference regarding cable tray characteristics, installation, and



Cable tray

ABB designs and manufactures cable tray systems, including perforated tray, cable ladder, channel tray and strut (metal framing).

Cable Tray Design, Layout, and Overall Wiring Planning

Wire Mesh Trays (Basket Trays): These are light and easy to put in. They work well for data and low-voltage cables. Channel



Cable Tray SHIB NAL

Cable trays are not raceways, but they are treated as a structural component of a facility's electrical system. Cable trays are a part of a planned cable management system to support, route, protect and



Best Practice Guide to Cable Ladder and Cable Tray Systems

This publication is intended as a practical guide for the proper and safe* installation of cable ladder systems, cable tray systems, channel support systems and associated supports.



A Guide to Installing and Supporting Electrical Cable Trays

A professional guide to installing electrical cable tray systems per NEC Article 392. Covers support, securing cables, and fill calculations.





Types of Cable Trays - Purpose, Advantages,

Cable tray systems are alternatives to wire ways and electrical conduit, which completely enclose cables. Cable trays are capable of supporting all types of

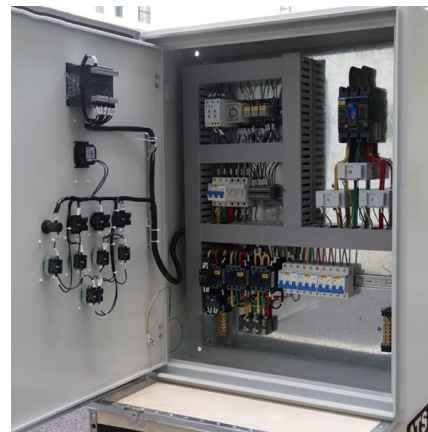


Cable Tray and its types & Sizes

A job site, field adaptable support system primarily for low voltage, telecommunication and fiber optic cables. However, These systems are typically

Technical Guidelines for Cable Tray Installation and

Cable tray installation must comply with specific technical standards to ensure electrical safety, system reliability, and long-term maintainability. This document



Contact Us

For datasheets, pricing, or custom telecom energy solutions, please visit:
<https://koskolong.co.za>