



Construction of seismic bracing for cable trays in Yemen

Various specifications optional



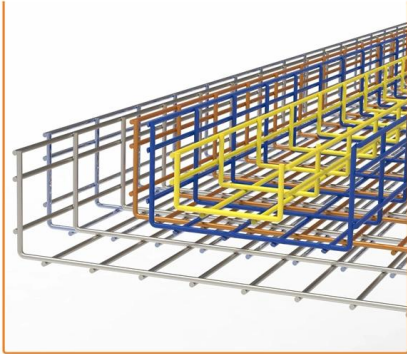


Overview

This study aims to develop a simple yet efficient performance-based design optimization methodology for cable tray systems in building structures.



Construction of seismic bracing for cable trays in Yemen

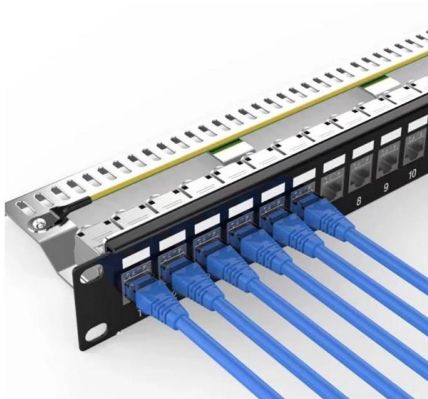
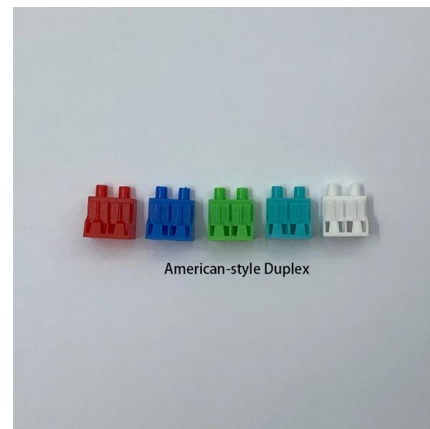


EARTHQUAKE PROTECTION

Pipe, Cable Trays, Bus Ducts & Conduit Bracing
Details Cable Bracing SWIVEL FASTENER (TYP.)
SEISMIC TENSION LOAD (REACTION) STIFFENER
CLAMP STIFFENER CLAMP HANGER ROD

The shake on seismic bracing

Seismic bracing against the wrath of earthquakes is an increasing concern for today`s data-communications and telecommunications cable installer, and efforts



Seismic Bracing of Fire, Mechanical and Electrical Systems

Seismic Bracing of Fire, Mechanical and Electrical Systems Jeffrey Jackson Rohit Narayan
Introduction Jeffrey Jackson (Worldwide Seismic Director) Jeff Jackson has been in the

Seismic Bracing Solutions for Data Center

From design to construction to inspection, we keep our process transparent to ensure a full understanding of the final bracing installation,



whether it requires cable or rigid bracing solutions.



Seismic

Non-structural elements are considered to be not part of the supporting framework of the building. Typical non-structural elements are building claddings, facades or suspended ceilings, but also

Cable Trays Seismic Design: Protecting Power in Quake

Learn how I approach Cable Trays Seismic Design to protect power and data in earthquake-prone areas. Understand key principles, methods, and



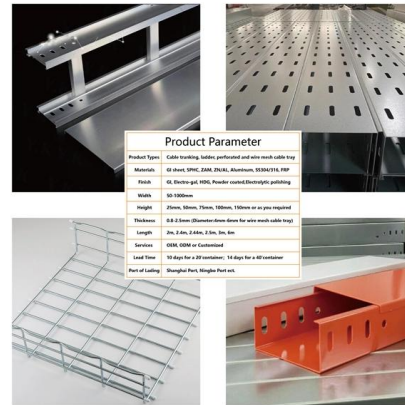
Westinghouse AP1000 Design Control Document Rev. 19

As stated in subsection 3.7.1.3, the damping ratio used for the AP1000 cable tray systems may be based on test results presented in Reference 19 (subsection 3.7.6). The cable tray test program conducted



Seismic Bracing Installation Best Practices: Cable

Seismic Bracing Installation Best Practices: Cable Bracing for Trapeze Applications No matter where in the world, building owners should consider the

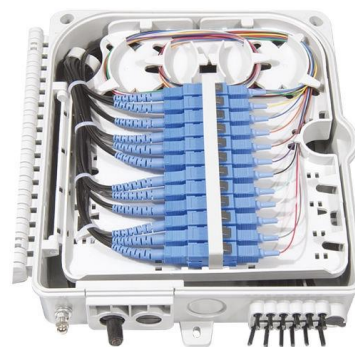


KINETICS(TM) Seismic & Wind Design Manual Section

D9.0 - Electrical Distribution Systems Title Seismic Forces Acting On Cable Trays & Conduit Basic Primer for the restraint of Cable Trays & Conduit Pros and Cons of Struts versus Cables

Seismic analysis and design of electrical cable trays and support

Most cable trays in nuclear power plants are classified as seismic category I components. Current safety requirements dictate that all such components be adequately designed in order to



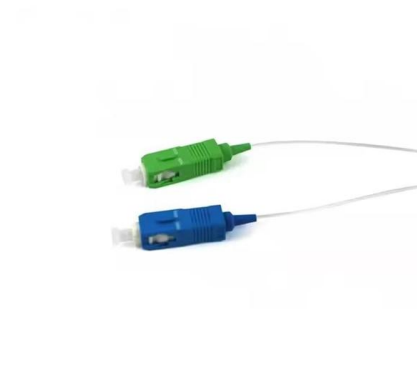
SEISMIC BRACING OF A DISTRIBUTED CABLE TRAY SYSTEM

These cable trays are constructed using prefabricated steel sections in a ladder-type configuration with solid steel longitudinal elements and light steel transverse "rungs." These cable trays are assembled



Understanding Seismic Support for Electrical Installations

This necessity is particularly true for cable trays, which play a critical role in managing electrical wiring and equipment. Adhering to seismic support requirements is essential to enhance the reliability of



How to install Seismic Cable Bracing

Our seismic cable bracing systems are easy to install and require minimal maintenance, making them a cost-effective solution for any facility.

Why do 150N/m Cable Trays Require Seismic Bracing?

Not all cable trays require seismic bracing. Smaller trays (e.g., 200mm) that contain only a few control or lightweight cables will typically have a total weight below 150N/m.





Seismic Bracing Ensures Stability and Safety of Cable

Seismic bracing adopts modular components, allowing for prefabricated construction without the need for welding or drilling. This construction method facilitates easy

Cable Tray and Conduit System Seismic Evaluation Guidelines

Rigid-mounted conduit and cable trays are inherently very stable and subject to minimal seismic amplification. A detailed dead load design review of these systems provides ample margin for



An Extensive Library of Self-Developed Products



Understanding the Seismic Resistance of Cable Trays

This article will explore the importance of seismic resistance in cable trays, discuss when seismic braces are necessary, and help you understand how

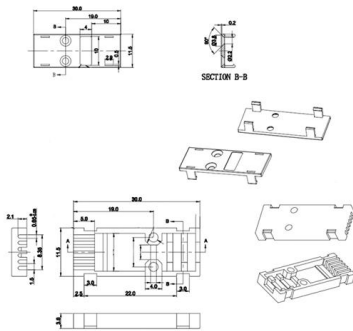
Performance-based optimum seismic design of cable tray system

The seismic performance levels of cable tray systems are presented according to current seismic design codes. A performance-based optimum seismic design procedure for cable tray



Seismic Cable Bracing Systems

Griplock's Seismic Cable Bracing Systems are already specified by designers and architects in many new construction projects and are the perfect choice for retrofit



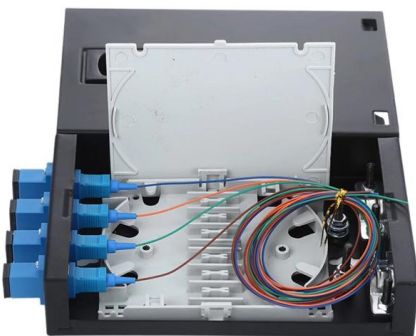
Seismic Bracing Systems for Cable Trays Catalog

Explore seismic bracing solutions for cable trays. Catalog details wire rope/cable systems, specs, design for earthquake protection.



Appendix 3F Cable Trays and Cable Tray Supports

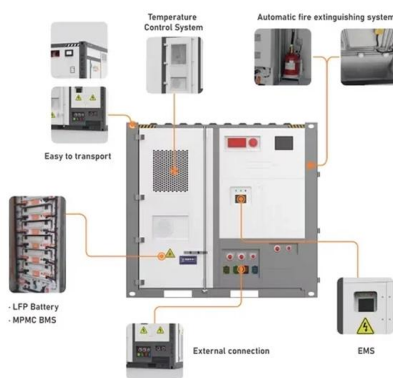
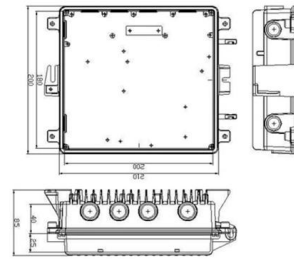
This appendix provides the design criteria for seismic Category I cable trays and their supports. Seismic Category II cable trays and their supports are also designed utilizing the design criteria of this appendix.





Vogtle Electric Generating Plant (VEGP) Units 3 and 4 Updated

Cable Trays and Cable Tray Supports This appendix provides the design criteria for seismic Category I cable trays and their supports. Seismic Category II cable trays and their supports are also designed



Performance-based optimum seismic design of cable tray system

A performance-based optimum seismic design procedure for cable tray systems is given and verified by three studied cases.

Cable Tray Checklist for High-Seismicity Projects

When those elements are coordinated early, cable tray systems can perform far more reliably under earthquake demands. Planning a project in a high-seismicity region? Contact our team



Seismic MEP Solutions , Eaton

Eaton's TOLCO seismic bracing solutions help protect people and non-structural components during an earthquake. For over 60 years, the mechanical, electrical, and fire protection trades have relied on



Contact Us

For datasheets, pricing, or custom telecom energy solutions, please visit:
<https://koskolong.co.za>