



**Adam Tas Corridor Energy**

# **Core Switch Architecture**





## Core Switch Architecture

---

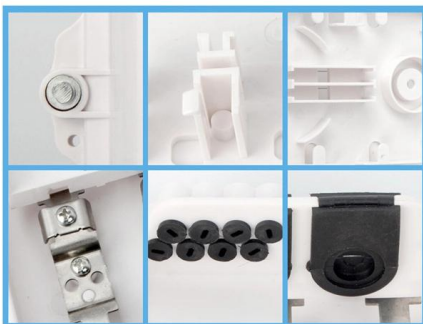


### Understanding Core Switch: What It Is and How to

Core switches are critical for establishing a fast and reliable network architecture through high-speed data forwarding. Typically, core switches are

### Core Switch

Core switches are defined as high-capacity switches located at the top of a cloud data center network, connecting aggregation switches and providing interfaces to wide area networks (WANs). They are



### What Is a Core Switch in Networking?

Unlike access switches, which connect directly to end-user devices, the core switch focuses on aggregating and routing traffic between other

### What is a Core Switch , Functions and Difference over Normal Switch

What is a Core Switch? It is a powerful backbone switch in the center of the network core layer,



which centralizes multiple aggregation switches to the core and implements LAN routing. The



### Differences Between the Core Switch and Normal

The so-called core switch is for the network architecture. If it is a small local area network with several computers, a small switch with 8 ports can be



### What is a Core Switch , Functions and Difference over Normal Switch

What is a core switch and how it works? This article builds the basics of this kind of switch for the ones who don't know anything about it. What is a Core Switch? It is a powerful



### Was ist ein Core-Switch? Funktionen und Bedeutung

Erfahren Sie, was ein Core-Switch ist und wie er die zentrale Rolle in einem Unternehmensnetzwerk spielt. Unsere Erklärung bietet Einblicke in die





## What Is Core Switch?

What Is Core Switch? Understanding the Backbone of Your Network A core switch is the high-capacity networking switch that forms the backbone of a network, directing data traffic between



## Core Switch vs. Distribution Switch vs. Access Switch

What is a Core Switch? A core switch is the primary switch installed at the backbone of a layered or hierarchical network. These data switches are responsible for

## Was ist ein Core-Switch?

Ein Core-Switch ist das Rückgrat eines großen Netzwerks und darauf ausgelegt, enorme Datenmengen mit extrem geringer Latenz und maximaler Zuverlässigkeit zu bewältigen. An der Spitze des



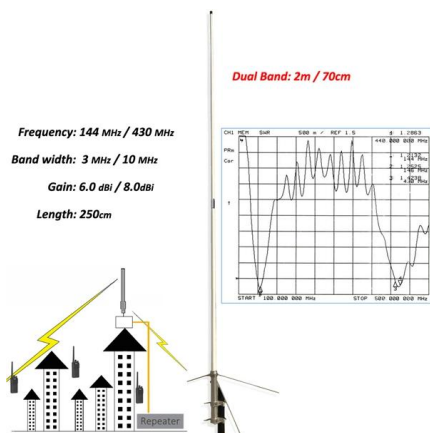
## GameHub Evolution is officially HERE! Our massive architecture

GameHub (@GameHubGlobal). 801 likes 22 replies. GameHub Evolution is officially HERE! ? Our massive architecture overhaul is LIVE with features you've been waiting for: ? Steam



## What Is a Core Switch? Network Backbone Architecture Guide

Discover what a core switch does in a 3-tier network model. Learn about ASIC routing, collapsed core vs dedicated core topologies, and SMB sizing guides.

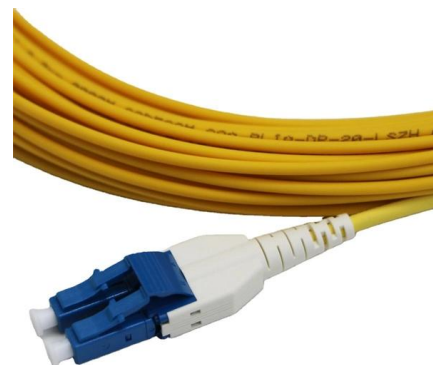


## Core Switches: The Pillar of Network Infrastructure

Core switches' functionalities highlight their indispensable role in network architecture. By ensuring data aggregation, routing, security, and high

## What Is the Core Switch?

The core switch is the central, high-capacity switching point within a network, responsible for forwarding data between different parts of the network and often connecting to multiple





## Understanding the Core Switch: Key Differences and Uses

Explore the core switch's role as the backbone of your network. Discover key differences, uses, and insights into layer 3 core switch technology.



### Core layer , FortiSwitch 7.4.0 , Fortinet Document Library

The core layer is critical, yet very simple to design, and allows for network evolution quite easily. Point-to-point links are used between each element, and Fortinet recommends using the MCLAG and dual



## Was ist ein Core Switch? Grundlagen & Vorteile

Core Switch-Umgebungen im Überblick: Wie zentralisierte Netzwerke Stabilität, Geschwindigkeit und Effizienz für Unternehmen steigern können.



## What Is a Core Switch in Networking?

What Is a Core Switch in Networking?  
Understanding the Backbone of Your Network A core switch in networking serves as the high-capacity



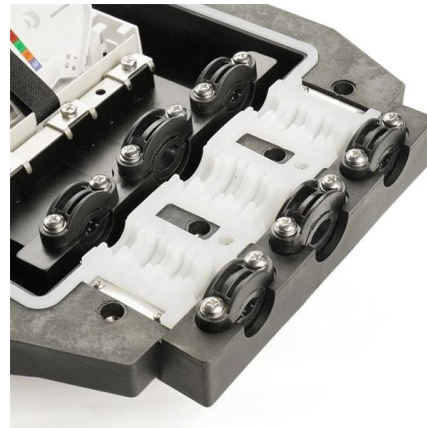
## What Is a Core Switch in a Network?

Define the core switch--the central, high-speed backbone required for aggregating and routing massive volumes of enterprise network traffic.



## Core Switch

Core switches are defined as high-capacity switches located at the top of a cloud data center network, connecting aggregation switches and providing interfaces to wide area networks (WANs).



## What is a Core Switch?

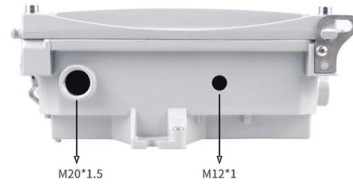
What is a Core Switch? A Deep Dive A core switch is the backbone of a network, providing high-speed switching for data packets between different network segments; essentially, it's





## What Is a Core Switch in a Network?

Core switches are optimized for high-speed routing and forwarding, operating at Layer 3 of the network model. They feature high-speed uplinks but have a lower port density because they



## What Is a Core Switch?

Sitting at the top of the hierarchical model, core switches interconnect distribution layer switches and provide high-speed data transfer across network segments. Unlike access or distribution switches, a

## Core Switches and Normal Switches: A Practical

In modern network infrastructure, switches play a pivotal role in connecting devices and facilitating data transfer. However, not all switches are



## Features and Applications of Core Switches

A Core Switch is a critical device that operates in the backbone portion of a network, primarily used for high-speed data switching. It is part of the commonly used Network Switch



## Core Switch vs. Distribution Switch vs. Access Switch

Comprehensive guide to Core, Distribution, and Access Switches. Roles in the network and important parameters explained.



## Understanding Core Switch: What It Is and How to

A core switch is not merely a type of switch but rather denotes the switch that operates at the core layer (the network's backbone). Positioned at the

## Contact Us

---

For datasheets, pricing, or custom telecom energy solutions, please visit:  
<https://koskolong.co.za>