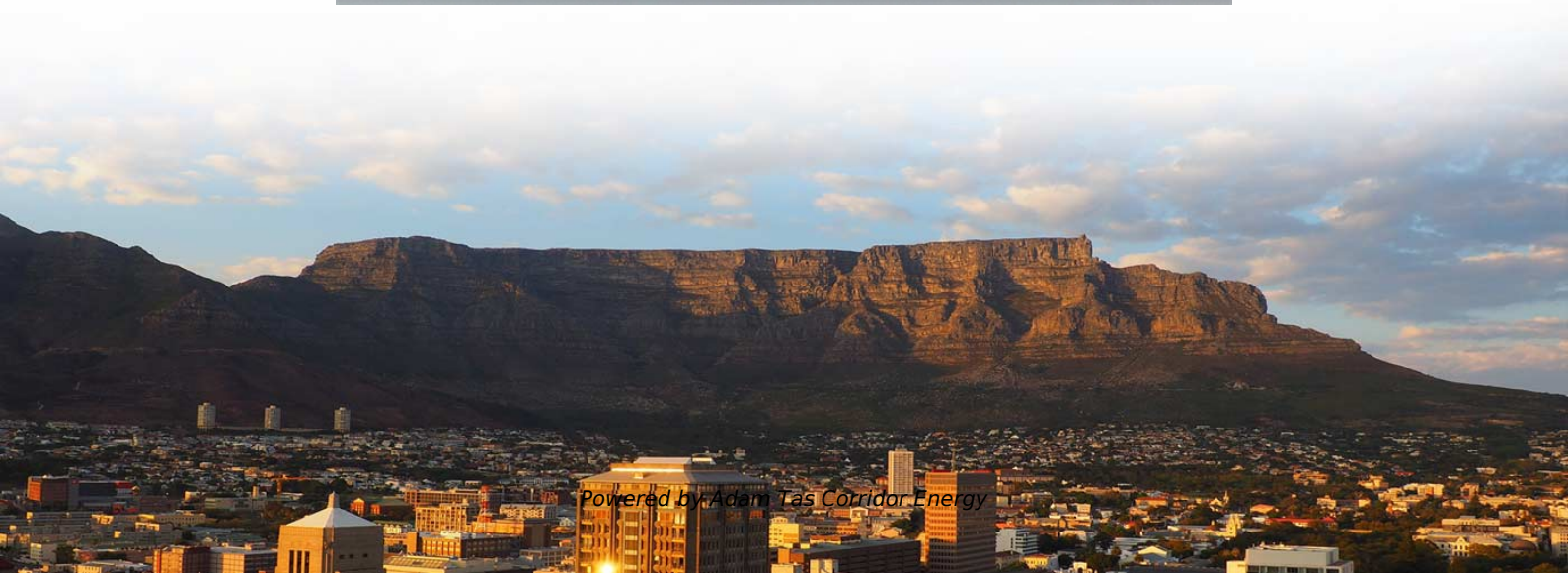
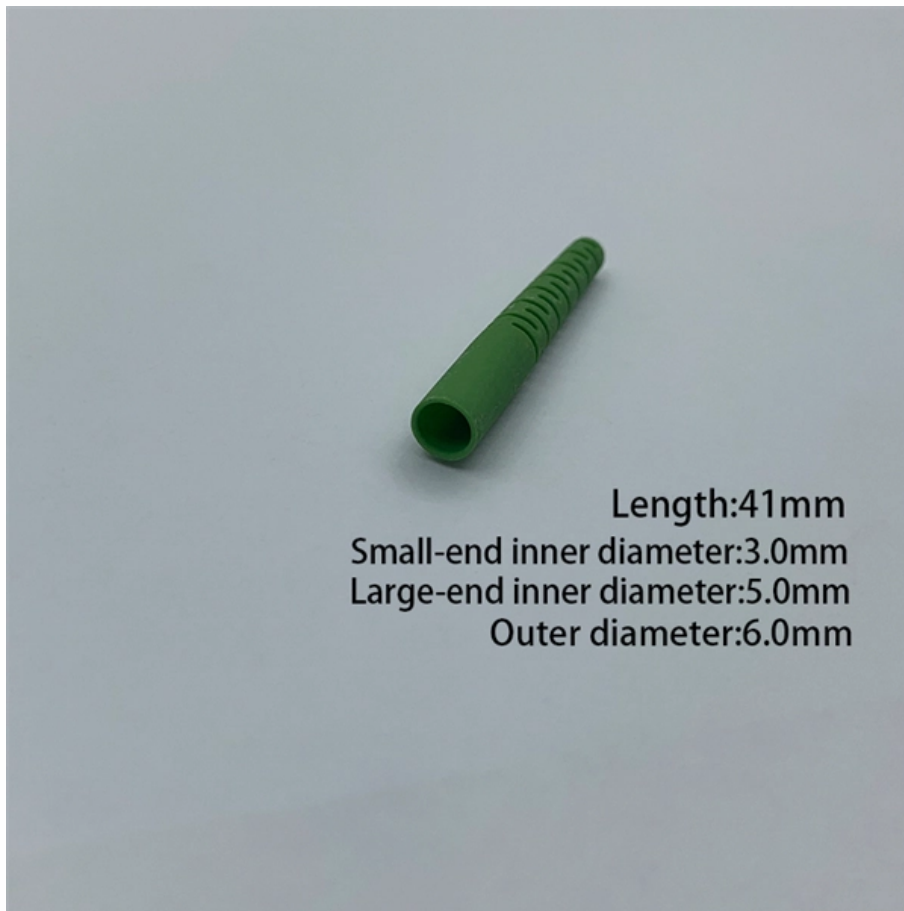




Adam Tas Corridor Energy

Core Switch Hardware Configuration Table





Core Switch Hardware Configuration Table



Introduction to Core Switch Configuration

A switch that functions as part of a router and operates at the third layer of the OSI network standard model, the network layer. The most important purpose of the layer 3 switch is to speed up the data

Understanding the Core Switch: Key Differences and Uses

Explore the core switch's role as the backbone of your network. Discover key differences, uses, and insights into layer 3 core switch technology.



Guide to Basic Switch Configuration , Auvik

Switch configuration on your own can seem like a daunting task. Use this handy guide to get your network switch up and running with ease.

Network switch

Network switch Avaya ERS 2550T-PWR, a 50-port Ethernet switch A network switch (also called switching hub, bridging hub, Ethernet switch, and--by the IEEE --



Basic Cisco Switch Configuration Example in 10 Steps

Unlike other lower class switch vendors (which are plug-and-play), the Cisco switch needs some initial basic configuration in order to enable management, security

Interface and Hardware Components Configuration

Interface and Hardware Components Configuration Guide, Cisco IOS XE Fuji 16.8.x (Catalyst 9500 Switches)



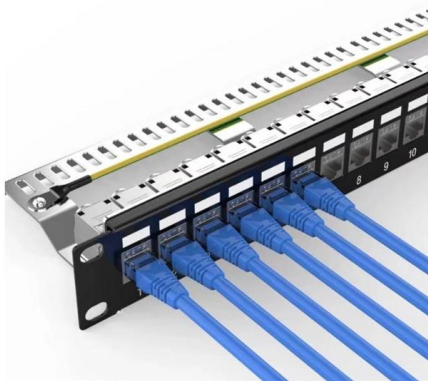
Support

Core switch 1 operates as the master to process intranet packets. When core switch 1 fails or the upstream link of core switch 1 fails, core switch 2 takes over to process intranet packets.



Security Hardening Checklist Guide for Cisco

Network infrastructure devices (routers, switches, load balancers, firewalls etc) are among the assets of an enterprise that play an important role in security and thus



8 Steps to Configure Your Network Switch

Learn how to setup a network switch with ease. Switches allow you to send and receive information efficiently and securely. Get setup today!

Core Switch Configuration

Change all the default gateway entries on your dumb devices to use the new VRRP IP.



What is a Core Switch?

What is a Core Switch? A Deep Dive A core switch is the backbone of a network, providing high-speed switching for data packets between different network segments; essentially, it's



Network Switch Components and Technical Analysis

Beyond the network architecture hierarchy, the composition of a Network Switch also involves its hardware and software components, primarily consisting of the following sections: The switching



Core Switches: The Pillar of Network Infrastructure

Get a closer look at core switches: the nerve centers of network infrastructure that enhance performance and facilitate growth.

Core Switch Specifications and Features

The document outlines specifications for a layer 3 core switch, including that it should support: - At least 800Gbps switching capacity and 250Mbps throughput for IPv4



Supply, Installation, and Configuration of Core Switch

Supply, Installation, and Configuration of Core Switch 1. TECHNICAL REQUIREMENT AND SCOPE OF WORKS Planning Review the existing network infrastructure and topology. Determine the required



Core Switch Reference Config , Validated Solution Guide

The access switch template is the reference that was used in the deployment procedure. It has been sanitized to allow for easy adaptation to any environment. To allow for modification of this



Switch Hardware

, This topic explain how switch hardware features support network requirements. Start learning CCNA 200-301 for free right now!!

Network Switch Components and Technical Analysis

The Core Switch then forwards the data to the target network or device according to the routing information. Beyond the network architecture hierarchy, the composition of a Network Switch also





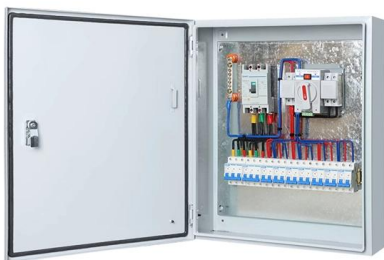
Understanding Core Switch: What It Is and How to



Redundancy in a core switch is vital for safeguarding network security. It's essential to choose a switch that offers substantial redundancy to ensure a

Amazon EC2 instance types

What are EC2 instance types? EC2 instance types are purpose-built configurations of virtual servers, designed with different resource combinations to help your



Embedded Switch Technology Reference Architectures

This document provides design recommendations for connecting device-level topologies to larger, switch networks comprised of Layer 2 access switches. It also covers the implementation of

How to Configure a Cisco Switch (step by step)

If you're looking to configure a switch for the first time, this post is for you. Learn step-by-step configuration commands for Cisco IOS Switches.

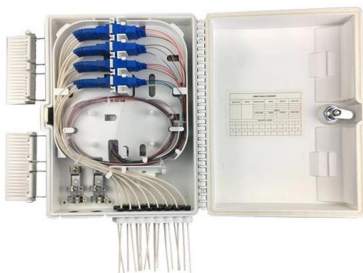


Switch box configurations. , Download Table

Download Table , Switch box configurations. from publication: A hierarchical test scheme for system-on-chip designs , System-on-chip (SOC) design methodology

Features and Applications of Core Switches

Core Switches also provide intelligent routing, QoS assurance, security, scalability, and manageability. A well-matched Core Switch configuration is a strong support for building powerful,



Cisco Catalyst 2960-X and 2960-XR Series Switches

Product Overview Cisco ® Catalyst ® 2960-X and 2960-XR Series Switches are fixed-configuration, stackable Gigabit Ethernet switches that provide



SMB Network Design: Core vs. Distribution vs. Access Switches

Don't overspend on network hardware. Our expert guide explains core, distribution, and access switches so you can design the right network for your SMB.



SME Network Solution Typical Configuration Examples

"Gateway (AR720) + Core Switch + Access Switch + AP + AR180" Networking: Huawei eKit Cloud Management "Gateway + Core Switch + Access Switch + WAC + AP" Networking: Local Entire

What Is the Core Switch?

What is the difference between a chassis-based core switch and a fixed-configuration core switch? A chassis-based core switch is a modular switch that allows you to add or remove line



Contact Us

For datasheets, pricing, or custom telecom energy solutions, please visit: <https://koskolong.co.za>