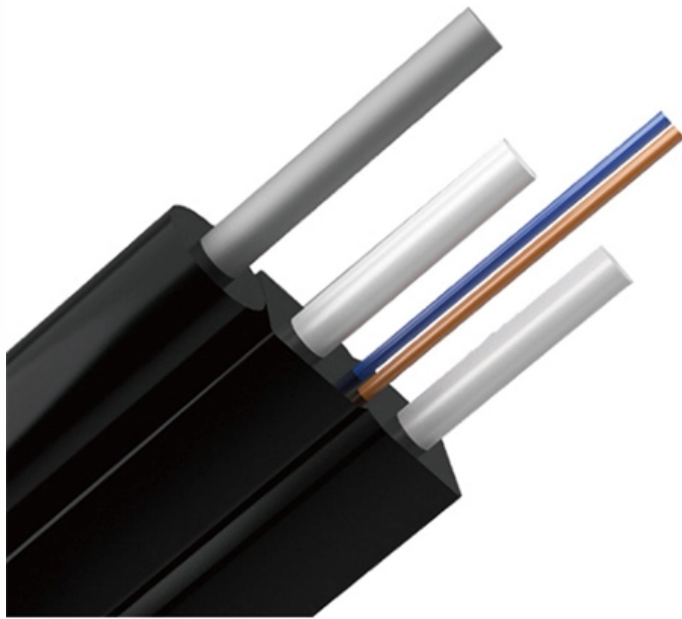




**Adam Tas Corridor Energy**

# **Core Switch Stacking Card Failure**





## Overview

---

Based on the hardware installation guide for Catalyst 9200 and 9300 switches, you must ensure the stack complies with the stack cable set up and ensure stack cables are properly set. Switch number - switch number assigned to a stack member, every stack member has a unique number assigned. `show version` `show switch` `show logging onboard switch <switch number>` `uptime detail` In the `show version` command output, you can identify the different reset reasons for each of the st. Once you validated the `Confirm Stack Cable Setup` and `Install Stack Cables` sections, check the s. This kind of issue can prevent switch boot up, therefore `show` commands are not an option. Stack cable authentication failed is shown when the switch gets reloaded due to this issue.



## Core Switch Stacking Card Failure

---

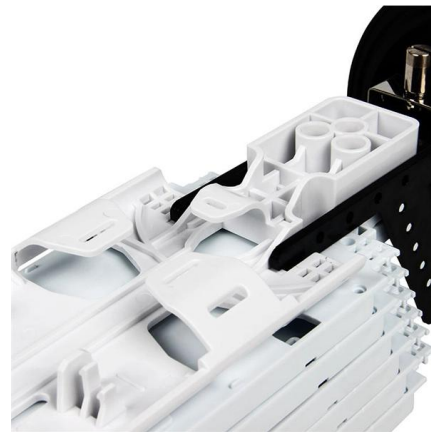
### Everything You Should Know About Switch Stacking

Switch stacking is a network configuration method that connects multiple physical switches to form a logical switch. In this way, administrators can configure and manage all switches



### Redundancy for Core Switch Stack : r/networking

Stacking at the core (regardless of vendor) is universally a bad idea. If they're not wanting to buy all new expensive gear, you have two options, both with advantages and disadvantages. Split the stack into



### Solved: 3850 Switch Stacking Fails

Solved: Hi All, I have two 3850 switches the first one is this Switch Ports Model SW Version SW Image Mode ----- \* 1 32 WS

### Verify and Troubleshoot Stackwise on Catalyst 9200/9300

This document describes how to troubleshoot common failure scenarios in Stackwise



deployments of Catalyst 9200/9200L and 9300/9300L.



### Cisco Catalyst 9300 Stack Detection Failure , CLI

Diagnose why a switch stops recognizing stack members using CLI commands, identify physical and software causes, and prevent future stack splits.

### Cisco Catalyst 1300 Series Stackable Switches Stacking Manual

Cisco Catalyst 1300 Series Switches are designed to be affordable, simple-to-use switches for small and medium-sized businesses. To enhance network scalability, reliability, and



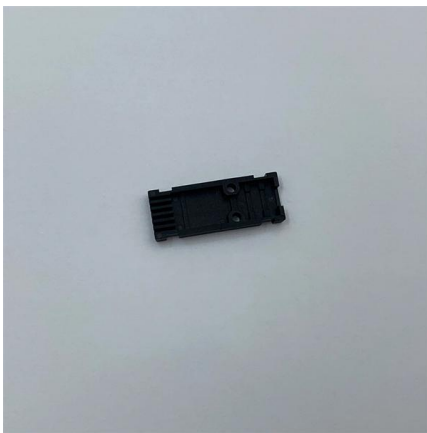
### Core-Switch redundanz erreichen

Sollte nun das Core-Switch ausfallen, dann geht ja gar nichts mehr und alles, was aktuell auf den Servern bearbeitet wird, ist weg. Wir wollen nun das Core-Switch redundant auslegen, so



## should core switch be stacked

Stacking turns multiple switches into a single unit for management and provides improved throughput across the switches. Does the core connect to a disti layer or collapsed backbone or



## 9200 stacking issues with latest software : r/Cisco

I've got a really strange issue with a few of my 9200 units that have been installed with both stacking kits with at least another unit. I'm tested firmware 16.12.03a and upgraded to 17.03.04b (the latest

## Solved: 4220 stacking stability

Things were stable mostly last year, but since the students have been back this year, we are having crashes/reboots on fibre facing switches while the rest of the stack stays up.



## Cisco 6509 Supervisor Card Slot Boot Failure

Cisco 6509 Supervisor Card Slot Boot Failure Ask Question Asked 12 years, 5 months ago Modified 12 years, 5 months ago



### Cisco 9200 Stacking failure behaviour

There is no Portchannel involved in stacking. When you stack a couple of switches together, you just use the stacking cables to connect them. When you stack multiple switches



### Switch Stacking Basic Setup and Configuration Steps

Steps to Configure the Switches in the Stack  
Power up the switch which you want should be the master. Attach the stacking cable to the rest of the

### Solved: 3850 Switch Stacking Fails

Hi All, I have two 3850 switches the Frist one is this Switch Ports Model SW Version SW Image Mode ----- \* 1 32 WS-C3850-24T





## Troubleshoot Catalyst 9200/9300 Reloads Due to Stack

This document describes how to troubleshoot unexpected reloads due to stack issues on Catalyst 9000 switches.

## Network Switch Troubleshooting Guide: Common

A comprehensive switch troubleshooting from the physical layer to the data link layer to the network layer to find out why your network switch is not



## FS Community

Hier sollte eine Beschreibung angezeigt werden, diese Seite lässt dies jedoch nicht zu.

## Solved: Stacking and Lag

Setting up an MLAG (Multi-Chassis Link Aggregation) between two Extreme XOS core switches involves several steps. After establishing the MLAG,



## Troubleshoot 3650/3850 Stack Manager Reloads

This document can highlight some of the common types of failures seen with stack-manager reloads, uses of a system report, and relevant CLIs available to diagnose and different

## Stacking and High Availability Configuration Guide, Cisco IOS XE

A switch stack can have up to eight stacking-capable switches connected through their StackWise ports. Only homogenous stacking is supported, that is, a stack of Cisco Catalyst 9200



## How to Master Huawei Switch Stacking: Best Practices and

Switch stacking is a cornerstone of modern network design, enabling simplified management, improved redundancy, and scalable bandwidth. Huawei's stacking technology (e.g.,



## Redundancy for Core Switch Stack : r/networking

A Stacked CORE switch is a control plane single point of failure. This is a design problem you can fix. The first step would be to un-stack them and as you suggested running VRRP/HSRP is probably a



## Cisco IOS XE 17

Adding a powered-on standalone switch or another powered-on switch stack to an existing powered-on stack is not supported and can disrupt the current stack topology and operation.

## Contact Us

---

For datasheets, pricing, or custom telecom energy solutions, please visit:  
<https://koskolong.co.za>