



Adam Tas Corridor Energy

Coupler beam splitting





Overview

This paper reviews the on-chip beam splitting methods in recent years, which are mainly divided into the following categories: y-branch, multimode interference coupling, directional coupling, and inverse design. These fiber-coupled Beam Splitters are compact opto-mechanical units that split a fiber-coupled source into two output fiber cables with high efficiency. Two main components are used: fiber-fiber coupler and beam bender or beam splitter. Cheng Lü, Shuai Tang, Jiabao Yao, Jie Song, Yongyuan Jiang; Customizable beam splitting in planar adiabatic acoustic couplers composed of cylindrical scatterers.



Coupler beam splitting



Compact and high-performance polarization beam splitter based on

Full length article Compact and high-performance polarization beam splitter based on triple-waveguide coupler Jia-Min Liu, De-Long Zhang Show more Add to Mendeley

Laser beam guidance

Two main components are used: fiber-fiber coupler and beam bender or beam splitter. The FFC-R is one of our laser beam guidance components, which efficiently couples single or combined high



Analysis of splitting ratio of a symmetric directional coupler

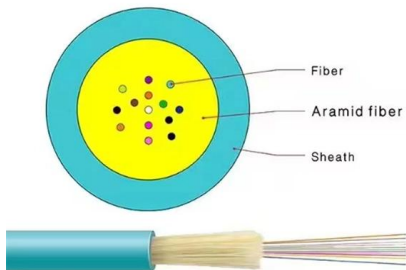
Optical fiber directional coupler is the guided wave equivalent of a bulk optic beam splitter and it is one of the most significant in-line fiber components. Directional couplers are applied in fiber

Compact and high-performance polarization beam splitter based on

Here, we propose a compact, high-performance PBS on the basis of a triple-waveguide coupler



consisted of two LNOI ridge waveguides and an amorphous silicon (a-Si) nanostrip assisted



Understanding Fiber Optic Splitters: Principles,

Keywords: Fiber optic splitters, optical networks, 1:N splitting principle, parallel beam splitting, beam divergence splitting, splitting ratio, insertion loss, uniformity,

Dual-layer polarization beam splitting grating coupler with low

We propose a dual-layer polarization splitting grating coupler (PSGC) in multilayer silicon nitride-on-silicon photonic circuits. The coupling efficiency reaches



EVANESCENCE BASED VARIABLE SPLIT RATIO FIBER SPLITTER/COUPLER

Variable split ratio fiber splitters provide splitting ratios tunable from 0% to 100% with negligible optical loss. The device consists of two side-polished fibers mated to induce evanescent field coupling. The



Efficient scheme for realizing beam-splitter-type coupling for two

We propose a scheme for realizing the beam-splitter-type coupling between two cavity modes. In the scheme a collection of L-type three-level atoms are



A Review of Optical Coupler Theory, Techniques, and

optical couplers. Coupling at optical frequencies presents challenges to achieving high efficiency, compactness, high fabrication tolerance, and ease

Methods and applications of on-chip beam splitting: A review

This paper reviews the on-chip beam splitting methods in recent years, which are mainly divided into the following categories: y-branch, multimode interference coupling, directional coupling,



2D optical beam splitter using diffractive optical elements (DOE)

A novel approach for optical beam distribution into a 2-dimensional (2-D) packaged fiber arrays using 2-D Dammann gratings is investigated. This paper focuses on the design and fabrication of the



**IP66 Waterproof Rating —
Built to Withstand Wind and Rain**



Numerical Analysis and Optimization of a Multi-Mode

Numerical Analysis and Optimization of a Multi-Mode Interference Based Polarization Beam Splitter
Numerical Analysis and Optimization of a Multi-Mode Interference Based Polarization Beam Splitter



Customizable beam splitting in planar adiabatic acoustic couplers

In this work, five-waveguide (five-WG) acoustic couplers with planar configurations are designed based on quantumlike adiabatic transfer, through which the inci



Broadband Polarization Beam Splitter by Using Cascaded Tapered

We propose and demonstrate a broadband silicon-based polarization beam splitter (PBS) by using cascaded tapered bent directional couplers (DCs). In our device,





Asymmetric Bridged Coupler-Based Polarization Beam Splitter on

We demonstrate a compact polarization beam splitter on an x-cut thin-film lithium niobate platform. The device exhibits polarization extinction ratios exceeding 9.16 dB and insertion losses below 1.77 dB in

Dual-layer polarization beam splitting grating coupler with low

We propose a dual-layer polarization splitting grating coupler (PSGC) in multilayer silicon nitride-on-silicon photonic circuits. The coupling efficiency reaches -3.2 dB with polarization dependent loss

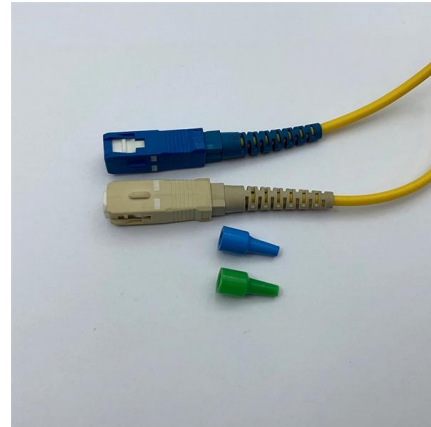


Methods and applications of on-chip beam splitting: A

This paper reviews the on-chip beam splitting methods in recent years, which are mainly divided into the following categories: y-branch, multimode

High Performance Polarization Beam Splitter Based on

Abstract and Figures A high performance polarization beam splitter (PBS) based on cascaded directional couplers (DCs) assisted by effectively



Fiber Port Cluster: Dichroic Systems

Fiber Couplers A fundamental component of a Fiber Port Cluster is the Laser Beam Coupler, which is the input into the opto-mechanical unit collimating the input



Asymmetric generation of broadband beam splitting using a

In this work, a broadband acoustic beam splitter that has an asymmetric transmission feature is proposed by constructing a dissipative acoustic coupler. The beam splitter has a simple



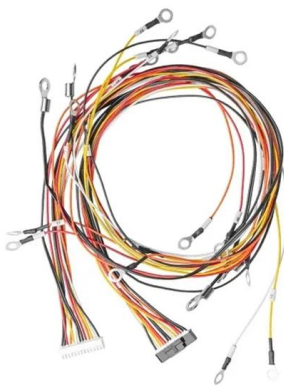
Splitter vs Coupler: What Are the Differences?

Fiber Splitter vs Fiber Coupler: What are the Key Differences? Signal Distribution: A fiber optic splitter typically divides one optical signal into multiple



Design and simulation of a compact polarization beam

For the polarization multiplexing requirements in all-optical networks, this work presents a compact all-fiber polarization beam splitter (PBS) based on

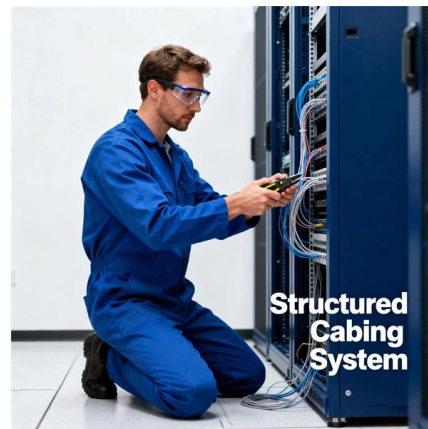


Multicube Systems

The multicube(TM) construction system is the perfect integration platform for laser beam couplers, beam combiners, beam splitters, polarizers or retardation optics.

Methods and applications of on-chip beam splitting: A

It is widely used in power splitting, polarization separation, wavelength division multiplexing and other scenarios. This paper reviews the on-chip beam



Optical Coupler

The coupling ratio (or splitting proportions) depends on the coupler configuration, which is the ratio that the input optical signals are divided between the outputs, i.e., a 50:50 coupling ratio in a 1x2 coupler



Customizable beam splitting in planar adiabatic acoustic couplers

In this work, five-waveguide (five-WG) acoustic couplers with planar configurations are designed based on quantumlike adiabatic transfer, through which the incident waves can efficiently



Tap Coupler - Beamsplitter Tutorial

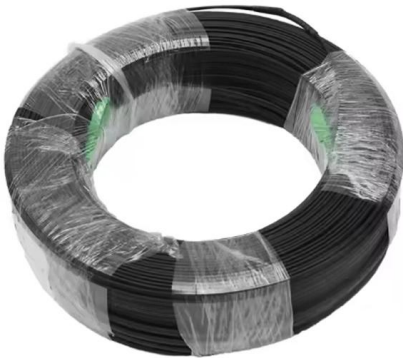
Tap couplers filters and beamsplitters are used to reflect a specific percentage of incident light over a broad wavelength range and for a specified angle of incidence.



Fiber Optic Splitters vs Couplers: A Comprehensive Guide

Compare Fiber Optic Splitter and coupler functions, signal loss, and best uses to choose the right device for efficient modern network distribution.





Multicube Systems: Beam Splitter

Fiber Couplers A fundamental component of a fiber-coupled Beam Splitter is the Laser Beam Coupler, which is the input into the opto-mechanical unit collimating

Contact Us

For datasheets, pricing, or custom telecom energy solutions, please visit:
<https://koskolong.co.za>