



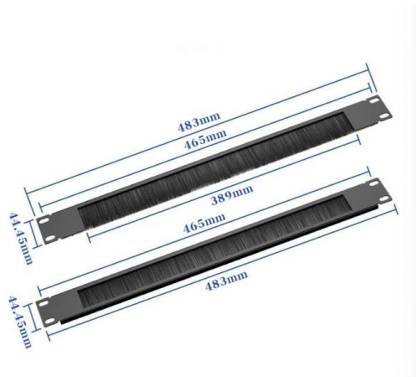
Adam Tas Corridor Energy

Coupling of small and large fiber core diameters





Coupling of small and large fiber core diameters



Large-core Fibers - multimode, single-mode, effective

A large-core fiber is an optical fiber having a fiber core which is relatively large. It can be a multimode fiber or a single-mode fiber. Large-core Multimode Fibers Large

Optical Fiber Coupling

Optical fiber coupling refers to the process of joining optical fibers to split or combine light with minimal loss, utilizing methods such as fusion splicing, mechanical splicing, or connectors.



Tutorial Passive Fiber Optics, Part 6: Fiber Joints

As an example of coupling losses, consider a perfect mechanical splice between two step-index multimode fibers with equal NA of 0.2 (calculated from the maximum

Large core multimode fiber with high tolerance to coupling

The model obtains more accurate results than the Gaussian model. This model compares the



coupling efficiency of large core and standard multimode fiber and demonstrates that the

Motor protection controller



Coupling Efficiency Analysis for Optical Fiber with Different Core

In this article, we have experimentally demonstrated a low cost and eye-safe 3×3 multiple-input multiple-output (MIMO) SDM system over a 15 meters multicore (MC) POF using

Optimizing Single-mode Fiber Core Diameter for Efficiency

Explore the significance of core diameter in single-mode fiber for high-performance data transmission. Learn how core diameter impacts efficiency and



Optical Coupling Efficiency of a Coupler with Double

To this end, the Large-Beam Fiber Coupler (LBFC) with a Double-combined Collimating Lens (DCL) and a single-mode TEC fiber structure are proposed in



High-Power Single Mode Fibre Coupling

The small core diameter of only a few mm makes Single-Mode and also Polarization-Maintaining fibre coupling (SM/PM fibre coupling) much more challenging than simple multimode fibre coupling. The



Fiber Coupling to Polarization-Maintaining Fibers and Collimation

When coupling into single-mode fibers, the laser beam couplers should produce a diffraction-limited spot that matches the mode field diameter and the numerical aperture of the fiber in order to achieve

Matching NA to Application: Fiber Core Diameter Selection for Optimal

Conclusion: Tailoring Fiber Optics to Match Application Needs In conclusion, selecting the appropriate fiber core diameter for optimal brightness involves a careful consideration of the



Fiber Joints - connectors, alignment tolerances, coupling loss, single

Joining multimode fibers is generally easier because their larger core diameters allow for more relaxed alignment tolerances compared to the much smaller cores of single-mode fibers.



optics

For the fiber coupling, I usually use a back-coupling device to quickly adjust the collimator. Since I didn't want to touch the fiber collimator on the



What makes a fibre optic cable? The big impact of tiny variables

Singlemode ferrules require the highest tolerance on bore diameter due to the high tolerances necessary to guarantee correct alignment of the fibers (dictated by the small size of the optical core,

Influences of core diameter on the quality of multimode fiber imaging

In this paper, the influences of fiber core diameter on the quality of CS MMF imaging are investigated theoretically and experimentally. Firstly, the relationship between the core diameter of





Influences of core diameter on the quality of multimode fiber imaging

In this paper, the influences of fiber core diameter on the quality of CS MMF imaging are investigated theoretically and experimentally.



Why is fiber coupling efficiency dependent on core diameter?

Why exactly does core diameter affect fiber coupling efficiency? On a related note, I've also read elsewhere that a larger diameter fiber with a lower NA has lower coupling capability than a



Multimode fiber coupling

You can also choose a smaller focal length to have a larger light cone when coupling into the fiber, which in turn excites more modes. Often a combination of these three strategies will result in a

Tolerance Analysis of a Fiber Coupling Setup Toleranc

Lens systems, such as the coupling lens in this application, can either be configured by the user from scratch or imported from information provided by the manufacturer.



How to Splice Fiber Optic Cables with Different Core Sizes

Learn the challenges and solutions for splicing fiber optic cables with different core diameters. Get tips to improve your fiber optic splicing skills.



A Coupling Method from Hollow-Core Fiber with Large Core Diameter

We proposed a coupling method to improve the coupling efficiency from hollow-core fiber with a large core diameter of 80 μm to single-mode fiber, the coupling efficiency increased from 3.2% of direct



Coupling Between the Small-Core-Diameter Dispersion Compensation Fiber

Abstract We investigate the coupling between a small-core-diameter dispersion compensation fiber (SC-DCF) and a single-mode fiber (SMF) and its applications in fiber lasers.





notes.dvi

Since the MFD is specified for any fiber, it is easy to calculate the coupling loss due to mode mismatch via the expression. The other intrinsic loss mechanisms is due to Fresnel reflections at the interfaces



Tech Note 20 Fiber Preparation and Fiber Connectors

Fiber Optic Connector Types SMA -- "Sub Miniature A"; Ferrule diameter = 3.14mm. Due to its stainless steel structure and low-precision threaded fiber locking mechanism, this connector is used mainly in

Can you splice optical fiber with different core size by

It is possible to splice two optical fibers with different core sizes by fiber fusion splicer, but you need to be careful. If you are splicing single-mode



Tutorial Passive Fiber Optics, Part 6: Fiber Joints

One could imagine that when going from a smaller-mode fiber to one with a larger mode, one could avoid the coupling losses if the second fiber has the same NA

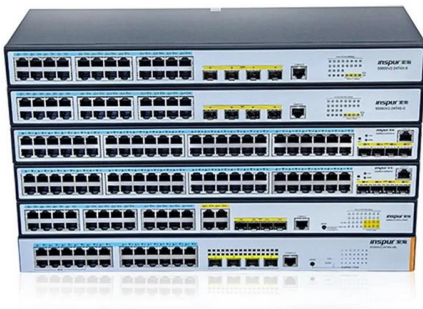


Small Core Fiber Optic Connectors Performance Model

Many of these sensing systems utilize small-core fiber optimized for operation in the visible and near-ultraviolet spectrum (800-350nm). This poses new challenges for the fiber optic connectors used



- IP65/IP55 OUTDOOR CABINET
- OUTDOOR CABINET WITH AIR CONDITIONER
- OUTDOOR ENERGY STORAGE CABINET
- 19 INCH



Optical Coupling Efficiency of a Coupler with Double

To this end, the Large-Beam Fiber Coupler (LBFC) with a Double-combined Collimating Lens (DCL) and a single-mode TEC fiber structure are

Ytterbium-doped all glass leakage channel fibers wi , PDF or Rental

Summary: The new all glass leakage channel fibers have no polymer in the pump path and have independent control of fiber outer diameters and pump cladding dimension, and enable designs with





Fiber Optic Coupling

The fiber has a core diameter of 50 μm and an NA of 0.20. Let's look at the coupling from the beam into the fiber when a M-20X objective lens is used in an F-915 or F

Contact Us

For datasheets, pricing, or custom telecom energy solutions, please visit:
<https://koskolong.co.za>