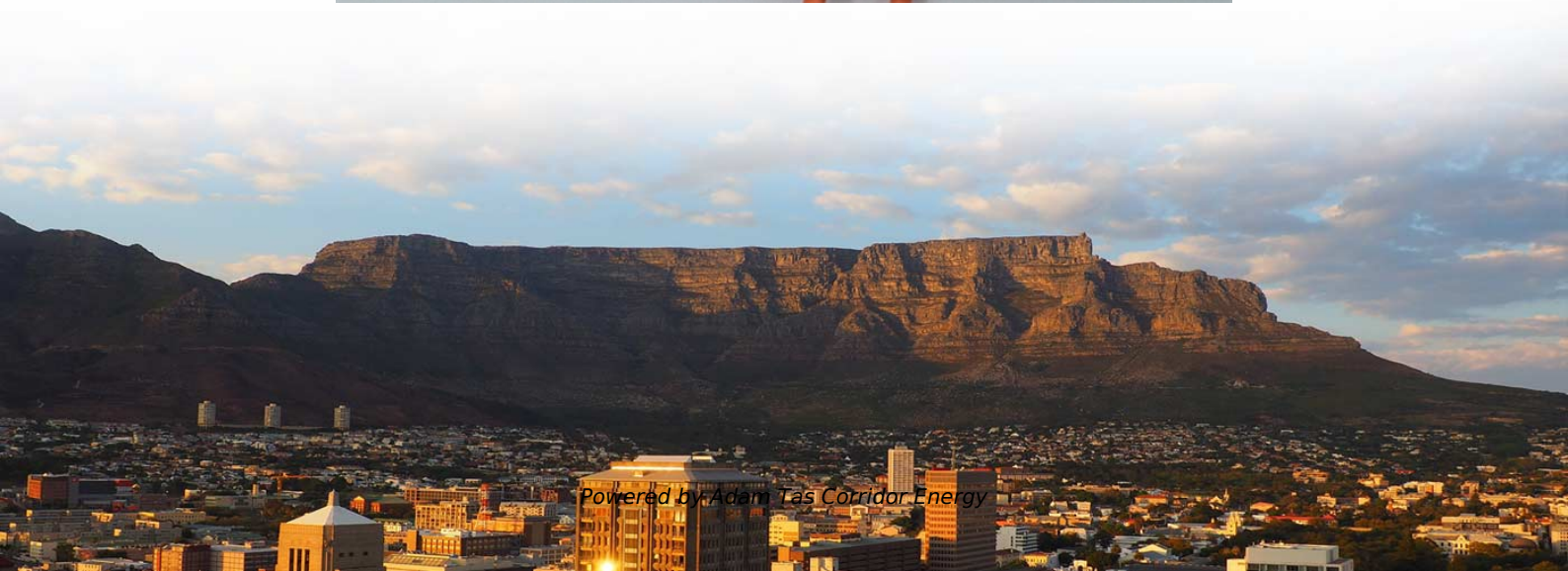




Adam Tas Corridor Energy

Current carrying capacity of high voltage busbar





Overview

The cross-sectional area is $A = I / J$, where I is the rated current and J is the current density. For busbar sizing, the primary references are IEC 61439 (for low-voltage switchgear and controlgear assemblies) and IEC 60287 (for current-carrying capacity of cables). To calculate Busbar Current, enter the width (mm), thickness (mm), and material carry capacity factor (amps/mm²). The electrical power system consists of many incoming & outgoing feeder connections, for which busbars are necessary. A busbar is a heavy-duty, highly conductive strip of copper or aluminum used to conduct massive electrical currents within switchboards, distribution boards, substations, and battery banks.



Current carrying capacity of high voltage busbar

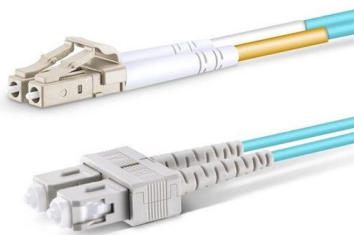


Low Voltage Busbar Future-proof Strategies: Trends, Competitor

Copper Busbars: Within the segment of Copper Busbars, the demand is particularly strong in industrial applications where high current carrying capacity and long-term reliability are paramount.

Busbar Size Calculator (IEC & NEC Compliant)

This chart provides recommended busbar sizes for common continuous current ratings. The configurations shown are verified to pass typical IEC and NEC checks for thermal and short-circuit



High Voltage Busbars 2026-2034 Trends: Unveiling Growth

Discover the booming high-voltage busbar market! Explore key trends, growth drivers, and leading companies shaping this \$5 billion industry by 2033. Learn about market segmentation,

Cast Copper Pure Copper Busbar Material: Comprehensive Analysis

Cast copper pure copper busbar material plays a critical role in solar photovoltaic (PV) inverters,



wind turbine converters, and grid-scale energy storage systems: PV inverter applications:

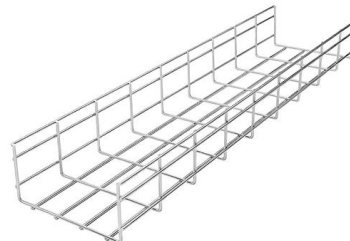


What Are Electrical Busbars? A Complete Guide to

Known for their durability and high current-carrying capacity, rigid busbars are ideal for industrial switchgear, control panels, and substations. Their

China Copper Foil Flexible Laminated Copper Busbar Manufacturers

High Current Carrying Capacity Utilizing a multi-layered copper foil parallel arrangement design, the Busbar's current carrying capacity is increased by 15%-30% compared to traditional rigid bars. It can



Busbar Fabrication: Machines, Process & Production

Unlike insulated cables, busbars offer superior current-carrying capacity with minimal voltage drop and excellent heat dissipation. For a



Wire Ampacity Charts , Wire Gauge Chart

The ampacity is a factor that is used for measuring the high current-carrying capacity of wire in amperes for certain loads.



Copper & Aluminum Busbar Ampacity, Sizing & Calculation Guide

Busbar ampacity (current-carrying capacity) and sizing are critical for safe, efficient electrical systems. This guide breaks down calculations, charts, and best practices for copper and

IEC 61439 Busbar Standard: A Guide to Low-Voltage

This standard covers busbars used for low-voltage assemblies, power distribution, photovoltaic power systems, and electrical energy control. The IEC



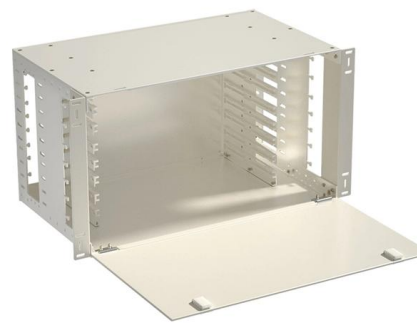
Busbar Calculator -- Current Rating, Temperature Rise, IEC 61439

The busbar sizing calculator determines the required busbar dimensions based on the continuous current rating, short circuit withstand, and thermal limits for switchgear assemblies.



EE18: CURRENT CARRYING CAPACITY OF CABLES /

Current carrying capacity / power rating of cables
(Excel) Download About Book Of Engineering



What Is A Busbar - Power Distribution In Electrical

An electrical busbar is typically formed as a metallic strip or bar, sized so its cross sectional area supports the required carrying capacity without excessive heat

Busbar Size Chart: Types, Current Rating, Materials

Why Busbar Size Matters The physical size of a busbar directly affects electrical performance, thermal behavior, and overall system safety. Proper sizing ensures that the conductor





A Guide to Electrical Busbars: Common Uses & Design

What Are Electric Busbars? An electric busbar (also written as bus bar) is a metallic bar, strip, tube, or rod that conducts current from one place to another in a safe

Low Voltage Switchgear Design for US and EU Markets: Busbar

It balances current-carrying capacity, thermal behavior, short-circuit strength, manufacturability, and cabinet space. For IEC-oriented assemblies, IEC 61439-1 sets out the general



Busbar Size Calculator , Ampacity & Sizing DIN 43671 Tool

A copper busbar current carrying capacity is significantly higher than an aluminum bar of the same exact dimensions. Copper is also highly resistant to oxidation, meaning the joint connections

Busbar Sizing Calculator , Current Rating Tool , Elec-Mate

Calculate busbar cross-section area and current rating for copper and aluminium busbars. Considers current density, voltage drop, temperature rise, and short-circuit withstand.



Busbar Current Capacity Calculator , Ampacity & Thermal Tool

Calculate busbar current capacity using DIN 43671. Supports Copper/Aluminum, parallel bar configurations, and plating factors for industrial design.



Safety Distance for Low-Voltage Busbars

Insulated busbars: Insulation allows for reduced clearance but must meet IEC 60664 or UL 746C dielectric strength requirements. Compact busbar trunking or confined spaces: Consider



Learn about our power busbar solution products , TE

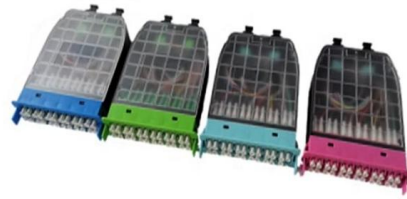
Power Busbar Solution As data volume and broadband use continue to expand, Power capacity demands increase for data communication and





Aluminium flat busbar for switchgear size selection and engineering

Common aluminum busbar size specifications cover three core dimensions: width, thickness and length. In low-voltage switchgear applications, the width of aluminum flat busbar is



How to Design Busbar Systems for Substations

Copper is preferred for high-current applications due to better conductivity and durability. Aluminum is used where cost and weight are critical

Busbar design for high-voltage applications in context of busbar current

Abstract: This article presents a comprehensive analysis of busbar design for high-voltage applications, focusing on the current carrying capacity and thermal performance.



Busbar Processing & Installation: Your Ultimate Guide

When implementing this busbar alternative, it's essential to consider the ampacity of the selected wire, ensuring it meets or exceeds the current



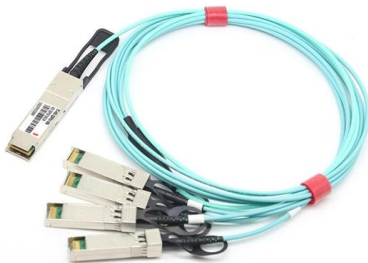
IEC Standard For Busbar Sizing: Complete Guide To

Learn the IEC standard for busbar sizing as per IEC 61439, including current-carrying capacity, temperature rise limits, and design criteria for safe and



Busbar Current Calculator

Using our online calculator, calculate the maximum continuous current rating for busbars using width, thickness, and material. Determine the allowed



Bus Bar Size Calculator

Current carrying capacity and budget as under size busbar can cause heating and damage in busbar while over size busbar can affect the cost of project. By using





Copper Busbar Market Size, Trends, Growth , 2035 Report

ETP copper contains oxygen content near 0.04%, enabling reliable conductivity for medium-voltage and high-current applications. During 2025, over 48% of commercial building

(PDF) Busbar Design for High-Power SiC Converters

Busbars are critical components that connect high-current and high-voltage subcomponents in high-power converters. This paper reviews the latest busbar design



Contact Us

For datasheets, pricing, or custom telecom energy solutions, please visit:
<https://koskolong.co.za>