



Adam Tas Corridor Energy

Custom Process and Quotation for 12-Core Polarization- Maintaining Fiber Optic Cable





Custom Process and Quotation for 12-Core Polarization-Maintaining



Quick fabrication method of a thermally expanded core in polarization

Furthermore, we apply the thermally expanded core method to manufacturing mode field adapters between commercially available polarization-maintaining optical fibers. Exemplary splices

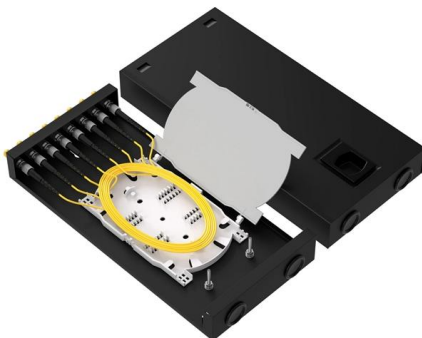
A Beginner's Guide: What Is Polarization Maintaining

The use of polarization maintaining components is widespread in telecommunication, networking, and instrumentation industries. Do you know



Polarization Maintaining (PM) Fiber Optic Couplers/Splitters - Large

Polarization Maintaining Fiber Splitter is an optical splitter in which the polarization of linearly polarized light waves launched into the fiber is maintained during propagation, with little or no cross-coupling



Polarization-Maintaining Fiber

Polarization maintaining fiber is defined as a type of single-mode fiber that preserves the polarization state of light during propagation by

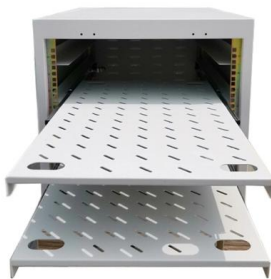


introducing anisotropic stress in its core,
minimizing cross



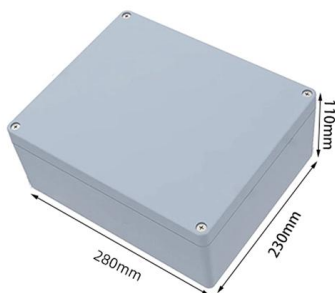
Polarization Maintaining Fiber

We offer industry standard Bow-Tie and Panda Polarization Maintaining fibers available with short beat-lengths and superb polarization preserving capabilities. ©2025 Newport Corporation. All rights reserved.



Polarization-Maintaining Single Mode Patch Cables

In addition to our stocked polarization-maintaining patch cables, we offer a custom fiber optic patch cable service with many options eligible for same-day shipment. Please contact Tech Support for



Polarization-maintaining Fibers - Buying Guide & Supplier List , RP

This polarization-maintaining fibers buying guide provides technical background, comparison of major types, selection criteria, and an overview of suppliers.



Fully Automatic Polarization Maintaining Fusion Splicer

The S-12PM offer a host of innovative technologies to address the rapidly expanding splicing needs of factory, manufacturing, laboratory and R& D applications. It is



Polarization Maintaining (PM) Fiber Fusion Splicer S12PM

SHINHO S-12 Polarization Maintaining (PM) fiber fusion splicer is with the latest accurate fiber alignment technology, it has very stable performance and low

S-12PM Polarization Maintaining Fiber Fusion Splicer

S-12 Polarization Maintaining (PM) fiber fusion splicer is with the latest accurate fiber alignment technology, it has very stable performance and low fusion loss, it is



Polarization-maintaining Fibers - Buying Guide & Suppliers

This polarization-maintaining fibers buying guide provides technical background, comparison of major types, selection criteria, and an overview of suppliers.



Polarization Maintaining Fiber Patch Cable

This PM Fiber Patch Cable is customizable, and above specifications are subject to change without notice. For product customization including high extinction ratios ($ER \geq 30$ dB possible), custom

50km/spool



Fiber Collimators - Buying Guide & Supplier List , RP

Fiber Collimators - Buying Guide & Suppliers Use this fiber collimators buying guide to compare major types, define selection criteria, and find suppliers: ? Technical

Polarization Maintaining Couplers: Advantages, Considerations, and

By ensuring that the polarization of light waves remains constant throughout the transmission process, Polarization Maintaining Couplers unlock new possibilities for high-speed, long





Customized Polarization Maintaining Patch Cord - FC, LC, MPO

Polarization Maintaining Fiber Patch Cord - FC LC SC MPO for Precision Optical Systems Compliant with IEEE 802.3z standards for Fast Ethernet and Gigabit Ethernet applications.

PM Fiber Components, Polarization-Maintaining Optical Fiber

The PM fiber array produced by MEISU can be built even up to hundreds of channels while keeping good consistency of all the PM fiber stress rods positioning. Custom and fabrication of polarization



Polarization Maintaining Patch Cables

Polarization Maintaining; 480 to 1625 nm; Fiber Type PANDA, others; Insertion Loss ≤ 0.4 to ≤ 1.5 dB; Operating Temperature Range -20 to +70 °C OZ Optics' PMJ series of polarization maintaining (PM)

Fiber Array Unit (FAU) Series

An FAU can be put inside a reconfigurable optical add-drop multiplexer (ROADM) and function as an optical transmission for the wavelength selective switch (WSS) to switch traffic



Understanding the Role of Polarization: Maintaining Tap Couplers in

Modern communication networks rely on sophisticated technologies that transmit information at incredible speeds. At the heart of these advanced systems, polarization-maintaining



The Importance of Polarization-Maintaining Fused Couplers in High

The current telecommunications infrastructure needs to increase both its data communication speeds and its available bandwidth capabilities. Current network speed



Key PM Components for Polarization-Maintaining Fiber

In the world of fiber optics, polarization-maintaining (PM) components are crucial for preserving the polarization of light signals. These specialized





Products , Fiber Array Units , Polarization-Maintaining Fiber Array

For a custom quote on any of our fiber array products, please fill out our RFQ form and our team will get back to you as quickly as possible.



S-12 PM Polarization-maintaining Fiber Fusion Splicer Application

As a high-precision optical fiber processing equipment, the polarization-maintaining fiber fusion splicer plays a key role in the application of optical gyroscopes, fiber hydrophones, fiber fan-in

Assembly and measuring technology for fibre optic polarization

1 Introduction Manufacturing of fibre optic polarization maintaining components requires good knowledge of the production process, in order to guarantee the stressless positioning of the PM fibre as well as



12 & 16 channels MPO/MTP® Polarization Maintaining Fiber Assemblies

All custom fibers, wavelengths and optical specs are available upon request. Our expert engineering sales team will partner with you to provide technical design and guidance to allow you to reach your



Polarization Maintaining Fiber-Based Components

If you do not see a PM hybrid component from the standard configurations that meets your needs, we welcome the opportunity to review your desired specification and quote a custom hybrid component.



Polarization Maintaining (PM) Fiber Patch Cables , MTP/MPO Optical

Customized Polarization-Maintaining (PM) Single-Mode Fiber Optic Patch Cables with a variety of connector options, including FC/PC, FC/APC, and hybrid FC/PC to FC/APC cables.

Polarization-Maintaining Fiber Optic Technology

DIAMOND has developed and perfected the necessary technologies to preserve and control the polarization state of a light signal as it propagates through polarization



Polarization Maintaining (PM) Fiber Patch Cables

Polarization maintaining (PM) optical patch cords are widely used in polarization sensitive fiber optical systems for transmission of light that requires



More products

OUTDOOR CABINET



FTTX SOLUTION



DATA CENTER



FIBER OPTIC COMPONENTS



Contact Us

For datasheets, pricing, or custom telecom energy solutions, please visit:
<https://koskolong.co.za>